



Wim Berndsen
 Cell: 352-613-6298
wimberndsenrealtor@gmail.com
BerndsenBerndsenRealty.com
BerndsenBerndsenRealty@gmail.com



Berndsen & Berndsen Realty
 West Palm Beach

Listing

2427 Presidential Way # Ph3 West Palm Beach, FL 33401



Condo/Co-Op/Villa/Townhouse
List Price: \$799,000
MLS #: [R11145834](#)
Status: Active
MLS Area: 5410
Zoning: MF32(c)
Type: Condo
Prop Class: Condo/Co-Op/Villa/Townhouse
County: Palm Beach
Subdivision: PARLIAMENT EAST CONDO
Beds: 2
Baths: 2/0
SqFt Liv Area: 2,219
SqFt Total: 2,219
Year Built: 1982/Resale
Style: C42-Condo 5+ Stories
Parcel Num: 74434318080001203
Dev Name: Lands of the Preside

Legal Description: PARLIAMENT EAST COND UNIT PH-3
Maint Fee Incl: Security, Garbage And Trash Removal

Remarks: Bright and spacious residence in the gated Lands of the President community with wide golf-course, lake, and city views overlooking the newly reimagined Dutchman's Pipe Golf Club and the Belgrove, a Marriott Autograph Collection hotel. This well-laid-out unit features an open living area with floor-to-ceiling full impact glass sliders leading to a private balcony, along with a split-bedroom floor plan offering comfort and flexibility. The primary suite includes ample closet space and direct balcony access. Residents enjoy a renovated lobby, 24-hour manned security, community pool, and an unbeatable location just minutes to downtown West Palm Beach, The Square, Palm Beach Island, and PBI Airport.

General Information

HOPA:	No HOPA	Short Sale:	No	Faces:		Apx Lot Size:	
REO:	No			Lender Apprv:		Build Lot/Unit#:	
Builder Name:		How Paid:		Proj Comp Date:		Dock #:	
Comm Dev Dist:				Amt Annually:		Main Liv Area:	
Waterfront:	Yes/Lake Front			Carport #/Desc:	/Detached		
Garage #/Desc:	0			# Ceiling Fans:			
Furnished:	Furniture Negotiable			Parking Rstrct:			
Parking:	Assigned Parking, Covered Parking			Lot Desc:			
Flooring:	Tile Floors			Design Desc:	Three Or More Stories		
Construction:	Concrete Block Construction						
Private Pool:	No						
View:	Lake						

Rooms

Master Bath: Dual Sinks, Separate Tub & Shower
Rooms: Laundry
Dining: Breakfast Area, Dining/Living Room

Additional Information

Pets:		Cable Avail:	Yes
Interior:	Closet Cabinetry, Fire Sprinklers, Pantry, Split Bedroom, Walk-In Closets, Wet Bar	Sprinkler:	
Equip/Apppl:	Cooktop, Dishwasher, Disposal, Dryer, Electric Water Heater, Icemaker, Microwave, Refrigerator, Wall Oven, Washer		
Windows:	Impact Glass, Sliding		
Exterior Feat:	Open Balcony		
Subdivision:	Community Pool, Management On Site, Sidewalks, Spa/Hot Tub		
Maint Includes:	Cable Tv, Common Area, Elevator, Maintenance Incl Bldg Exterior, Maintenance Incl Security, Maintenance Incl Trash, Insurance, Manager, Parking, Pest Control Interior, Roof Repairs, Security, Sewer, Trash Removal, Water		
Heating:	Central Heat, Electric Heat	Sewer:	Sewer
Cooling:	Ceiling Fans, Central Cooling, Electric Cooling		
Water:	Public Water		
Restrictions:	Assoc Approval Required		

Condo

Building #:		Unit Floor:	12	Total Floors:	12	# Bldg Units:	45
Amenities:	Community Pool, Fitness Center, Management On Site, Pool, Spa/Hot Tub, Trash Chute						
Complex Name:	PARLIAMENT EAST CONDO						
	Govern Bodies: Condominium						

Financial Information

Taxes:	\$9,895/2025	Tax Info:		Assumable:	No
Terms:	Cash, Conventional				

Type Assoc: /\$1,711/Monthly
Customer Full

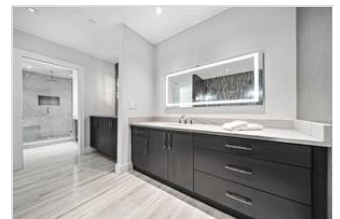
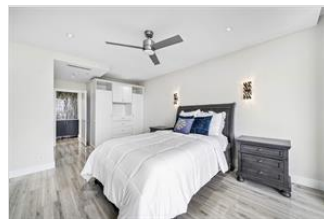
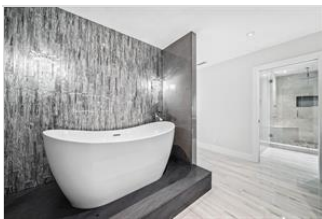
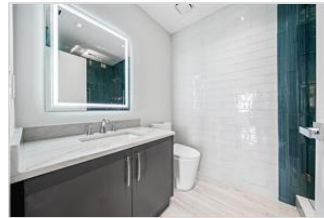
Mbr Req/Fee: No

12/06/2025 3:17:52 PM

Photos

MLS #: R11145834

List Price: \$799,000







*The Information is deemed to be reliable, but is not guaranteed. ©2025 Beaches MLS, Inc. Listing information is provided for consumer personal, non-commercial use, solely to identify potential properties for potential purchase; all other use is strictly prohibited and may violate relevant federal and state law. **Accessibility Issues?** We are committed to providing an accessible website. If you have difficulty accessing content or notice any accessibility problems, please contact our ADA hotline at **844-209-0134** and we will strive to provide the information you need in the format you require.*