

Wilhelmus Berdsen
 Berdsen & Berdsen Realty
 BerdsenBerdsenRealty@gmail.com
 Cell: 352-613-6298



2435 Presidential Way, Unit #H, West Palm Beach, Florida 33401

Listing

MLS#: [B26022674](#)
Status: Active

Prop Type: Residential
Type: Townhouse

Price: \$988,000
DOM: 31



Residential
List Price: \$988,000
MLS #: [B26022674](#)
MLS Area: 5410
Zoning: MF32 (city)
Type: Townhouse
County: Palm Beach
Subdivision: PARLIAMENT GOLF VILLAS CONDO
Beds: 3
SqFt Liv Area: 2,719
Units:
Year Built: 1982
Lot SqFt:
Acres: 0.00
Style: Contemporary, Other
Parcel Num: [74434318070010080](#)
Dev Name: LANDS OF THE PRESIDENT/PARLIAMENT VILLAS

Virtual Tour: <https://www.propertypanorama.com/2435-Presidential-Way-H-West-Palm-Beach-FL-33401--B26022674/unbranded>
Legal Description: PARLIAMENT GOLF VILLAS COND UNIT H BLDG 2435

Public Remarks : Step into refined elegance and effortless comfort in this beautifully renovated 2,719 SF townhouse, nestled within an exclusive gated community. From the moment you enter, you're welcomed by light-filled, open-concept living spaces, enhanced with fantastic views on the Jack Nicklaus signature golf course, premium finishes, and meticulous attention to detail. The spacious layout offers the perfect balance of style and comfort, ideal for both relaxed living and elegant entertaining. The gourmet eat in kitchen is a true centerpiece, featuring sleek cabinetry, high-end appliances, and ample space for gathering & cooking. The living and dining areas flow effortlessly, creating an inviting atmosphere that extends to private outdoor spaces—perfect for enjoying peaceful mornings or sunset evening. Seller offers a \$ 25,000 initiation fee, granting exclusive Social membership access to Dutchman's Pipe Golf and Country Club and the Belgrove Marriott Autograph Collection Hotel literally as good as next door. Located within a secure, beautifully maintained gated community, residents enjoy privacy, tranquility, —all just moments from shopping at the Tanger Outlet Mall, dining, and major conveniences of what downtown WPB and Palm Beach Island offers. This is more than a home—it's a lifestyle defined by comfort, elegance, and modern living at its finest. Please note that the kitchen fixture does not convey with the sale.

Directions: I-95 EXIT 71, PALM BEACH LAKES BLVD, GO EAST TO CONGRESS, GO LEFT, FIRST TRAFFIC LIGHT, GO RIGHT, PROCEED THROUGH MANNED GATE, GO TO END OF THE ROAD, TOWNHOUSES ARE ON THE LEFT.

General Information

Senior Cmty: No	Faces: North	Proj Comp Date:	Apx Lot Size: 0
Spcl List Cnd: Standard		Open Parking: 2.00	Covered Prk: 2.00
Builder Name:		# Ceiling Fans:	Parking Total: 4
Waterfront: Yes / Lake Front, Other	Carpport #: 2		Main Liv Area: Entry Level
Garage #:			
Parking Desc: Assigned, Attached Carport, Carport, Covered, Guest			
Furnished: Unfurnished			
Flooring: Marble, Tile, Vinyl			
Construction: Block, CBS, Concrete, Stucco			
Lot Desc: On Golf Course, Sidewalks			
Private Pool: No			
View: Golf Course, Lake, Water			
Unit Desc: Corner/End Unit			

Rooms

Main Lvl Bed: 0
Master Bath: Dual Sinks, Master Bdrm - Upstairs, Separate Shower, Separate Tub
Dining: Breakfast Area, Eat-In Kitchen

Additional Information

Pets: Yes/No Restrictions, Yes
Max # Pets:
Wgt Limit:
Pet Fee:

Interior: Bar, Bedroom Layout - Split, Built-in Features, Closet Cabinetry, Entrance Foyer, Roman Tub, Walk-In Closet(s), Wet Bar
Equip/Appl: Dishwasher, Disposal, Dryer, Range-Electric, Water Heater-Electric, Freezer-Free-Standing, Ice Maker, Microwave, Refrigerator, Washer, Water Heater
Windows: Plantation Shutters, Sliding, Storm Window(s) **Sprinkler:** Auto Sprinkler
Guest House: **Gated:** Yes
Exterior Feat: Balcony, Courtyard, Custom Lighting
Assoc Amen: Cabana, Clubhouse, Community Room, Jogging Path, Management, Manager On Site, Parking, Pool, Sidewalks, Street Lights
Heating: Central
Cooling: Central Air
Water: Public **Sewer:** Public Sewer
Roof: Barrel, Tile
Restrictions: Buyer Approval Required, Lease Restrictions

Financial Information

Taxes: \$3,278/2025 City/County
Terms: 1031 Exchange, Cash, Conventional, FHA
Type Assoc: Condominium/\$892/Monthly

Assumable:
Mbr Fee:

The information has been provided by the Seller and has not been verified by the Broker. Information is deemed reliable but not guaranteed.

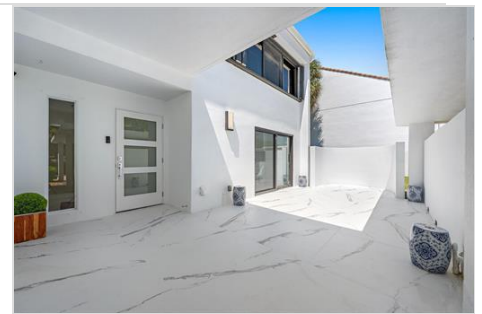
Photos



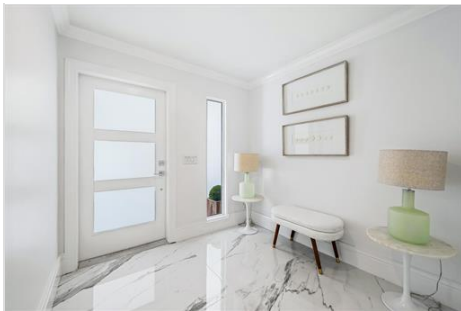
MAGNIFICENT TOWNHOUSE ON GOLF COURSE



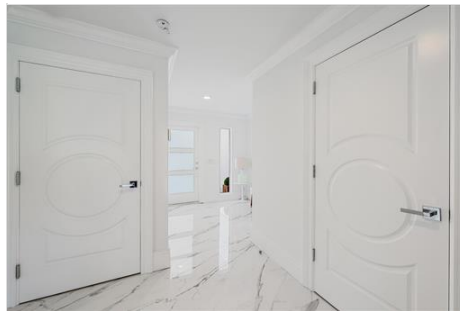
WELCOME TO TOWNHOUSE 2435 H



PRIVATE COURTYARD



ENTRANCE



ENTRANCE W/ CUSTOM DOORS



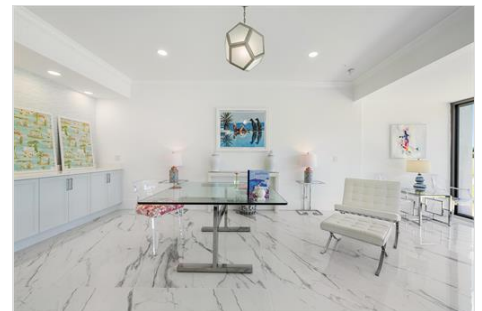
LIVING ROOM WITH VIEW ON GOLF COURSE



LIVING ROOM



LIVING ROOM



LIVING ROOM



LIVING ROOM



OPEN LIVING CONCEPT



LIVING ROOM



DREAMY OCEAN COLORS WET BAR



OPEN CONCEPT LIVING



DINING AREA



DINING AREA



DONT MISS THE ACTION



KITCHEN W/ COURTYARD



EAT IN KITCHEN



OPEN KITCHEN DESIGN



POWDER ROOM



LAUNDRY ROOM



PRINCIPAL BEDROOM



PRINCIPAL BEDROOM



EXTRA ARMOIRE AND DRAWERS



PRINCIPAL BATHROOM



PRINCIPAL BATHROOM/SHOWER



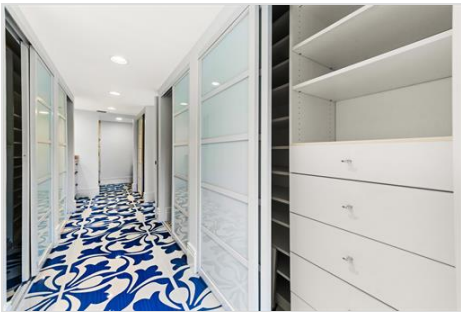
PRINCIPAL BATHROOM DOUBLE SINKS



SPA TUB WITH VIEW ON GOLF



SPA BATHTUB WITH A VIEW



CLOSETS GALORE



PRINCIPAL BATHROOM W/CLOSETS



PRINCIPAL BEDROOM TERRACE



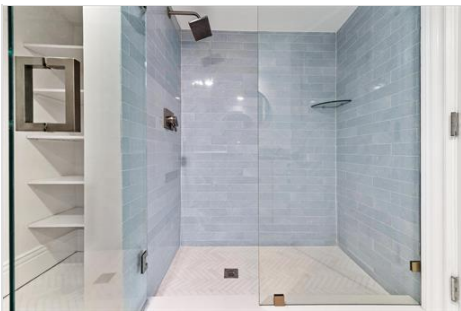
PRINCIPAL BR TERRACE



GUEST BEDROOM



GUEST BATHROOM



GUEST BATH/SHOWER



BR 3/OFFICE



BR 3/OFFICE



BR 3/OFFICE

Wim Berdsen | Berdsen & Berdsen Realty | BerdsenBerdsenRealty@gmail.com | Cell: 352-613-6298