

Wilhelmus Berdsen
 Berdsen & Berdsen Realty
BerdsenBerdsenRealty@gmail.com
 Cell: 352-613-6298



2480 Presidential Way, Unit #1103, West Palm Beach, Florida 33401

Listing

MLS#: [F10538645](#) **Prop Type:** Residential **Price:** \$469,000
Status: Active **Type:** Condominium **DOM:** 108



Residential
List Price: \$469,000
MLS #: [F10538645](#)
MLS Area: 5410
Zoning:
Type: Condominium
County: Palm Beach
Subdivision: The Envoy
Beds: 2 **Baths:** 2/0
SqFt Liv Area: 1,855 **SqFt Total:**
Year Built: 1984 **Stories Tot:** 19
Parcel Num: [74434318100001103](#)

Virtual Tour: <https://www.propertypanorama.com/2480-Presidential-Way-Unit-1103-West-Palm-Beach-FL-33401/unbranded>
Legal Description: ENVOY COND UNIT 302

Public Remarks : Enjoy breathtaking panoramic views from this beautifully decorated 2BR/2BA residence in the desirable Envoy building. Featuring tile floors, storm shutters, northwest exposure, and offered completely furnished—just move right in. Located in a gated golf community steps from the first tee of the new Nicklaus-designed Dutchman's Pipe course and the upcoming Belgrove Luxury Hotel. Minutes to Palm Beach, fine dining, shopping, the ocean, PBI Airport, and City Place. Building updates nearly complete, including concrete restoration and new elevators. A true resort-style gem in the sky.

Directions: Palm Beach Lakes Blvd, go north at N Congress, make a right at Presidential Way. Pass security and The Envoy is on the right.

General Information

Sr Community: No	Faces: South	Lender Approval:	Dock #:
Hardship Pkg: No	Short Sale: No	Open Parking: 1.00	Covered Prk: 0.00
Waterfront: No	Carport #: 0	# Ceiling Fans:	Main Liv Area:
Garage #: 0			
Parking Desc: Assigned, Guest			
Furnished: Furnished			
Flooring: Ceramic Tile			
Construction: CBS			
View: Garden, Lake, Other			

Rooms

Main Lvl Bed: 2 **Main Lvl Bath:** 2
Master Bath: 2 Master Suites
Dining: Dining/Living Room

<u>Room</u>	<u>Dimensions</u>	<u>Level</u>	<u>Description</u>
Laundry			

Additional Information

Pets: Size Limit **Max # Pets:** **Wgt Limit:** 20 **Pet Fee:** \$150 /
Interior: Bedroom Layout - Split, Pantry, Storage, Walk-In Closet(s)
Equip/App: Dishwasher, Dryer, Range-Electric, Water Heater-Electric, Range-Gas, Ice Maker, Microwave, Oven, Refrigerator, Washer, Water Heater, Water Purifier, Water Softener
Guest House: **Gated:** Yes
Exterior Feat: Balcony, Tennis Court(s)
Assoc Amen: Fitness Center, Internet Included, Maintenance, Parking, Sauna, Security, Spa/Hot Tub
Heating: Central, Electric
Cooling: Central Air, Electric
Restrictions: Other Restrictions, Parking - No RV, Parking - No Truck, Parking - No Trailer

Condo

Building #:
Cmplx Units:
Parking Sp #:
Unit View:
Security:
Amenities:

Unit Floor: 11
Min # Days Lse:
Approval Info: Yes
Garden, Lake, Other
Fire Sprinkler System, Lobby - Attended, Security Fence, Security Patrol, Smoke Detector(s)
Fitness Center, Internet Included, Maintenance, Parking, Sauna, Security, Spa/Hot Tub

Total Floors:
Times Lsd/Yr: 1

Bldg Units:
Interior Level:
Balc/Prch/Pat:

Financial Information

Taxes: \$6,398/2024 Tax Reflects No Exemptions
Terms: Cash, Conventional
Type Assoc: /\$1,264/Monthly

Assumable:
Mbr Fee:

The information has been provided by the Seller and has not been verified by the Broker. Information is deemed reliable but not guaranteed.

Photos



Photo 1



Photo 2



Photo 3



Photo 4



Photo 5



Photo 6



Photo 7



Photo 8



Photo 9



Photo 10



Photo 11



Photo 12



Photo 13

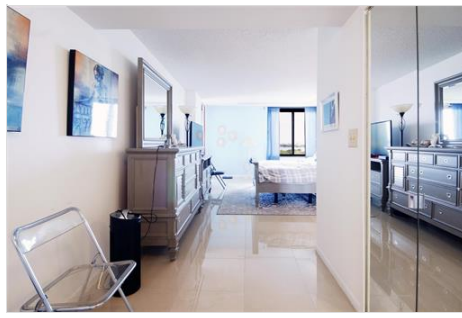


Photo 14



Photo 15



Photo 16



Photo 17



Photo 18



Photo 19



Photo 20



Photo 21



Photo 22



Photo 23



Photo 24

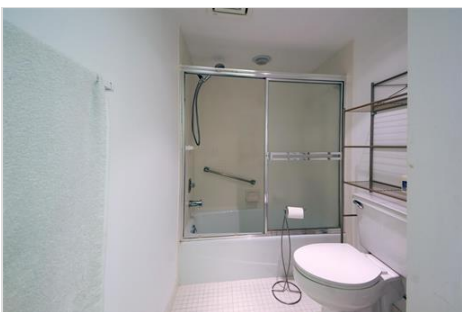


Photo 25



Photo 26



Photo 27



Photo 28



Photo 29



Photo 30



Photo 31



Photo 32



Photo 33



Photo 34



Photo 35



Photo 36



Photo 37



Photo 38



Photo 39



Photo 40