

Wilhelmus Berdsen
 Berdsen & Berdsen Realty
 BerdsenBerdsenRealty@gmail.com
 Cell: 352-613-6298



2480 Presidential Way, Unit #1504, West Palm Beach, Florida 33401

Listing

MLS#: [R11138289](#)
Status: Active

Prop Type: Residential
Type: Condominium

Price: \$499,000
DOM: 133



Residential
List Price: \$499,000 ↓
MLS #: [R11138289](#)
MLS Area: 5410
Zoning: MF32(c)
Type: Condominium
County: Palm Beach
Subdivision: Lands of the President - ENVOY CONDO
Beds: 3 **Baths:** 3/0
SqFt Liv Area: 2,334 **SqFt Total:** 2,584
Year Built: 1984 **Stories Tot:** 20
Parcel Num: [74434318100001504](#)

Virtual Tour:
Legal Description
Elementary:
High:

<https://www.propertypanorama.com/2480-Presidential-Way-1504-West-Palm-Beach-FL-33401/unbranded>
 ENVOY COND UNIT 1504
[Roosevelt](#)
[Palm Beach Lakes](#)

Middle: [Roosevelt Community](#)

Public Remarks : Enjoy the magnificent views of this spacious 15th floor 3 bedroom 3 bathroom condo in amenity filled luxury building in the prestigious gated community of Lands of the President. Over 2500sqft. of space with 2 balconies for plenty of outdoor living overlooking Lake Mangonia & Dutchman's Pipe golf course. Move in ready with beautiful floors, stainless steel appliances, quartz countertops & generous kitchen cabinet space. In unit laundry room with full-size washer, dryer & laundry sink. 24 hour doorman, on site manager, gorgeous pool, hot tub, tennis courts, social room, fitness center, sauna, billiard room & covered parking. HOA includes wi-fi & cable. Great location near Palm Beach Outlets, downtown West Palm Beach, airport & beaches. Building has over \$1.5 million in reserves.

Directions: Use GPS and park at Guest Parking when you get to building.

General Information

Sr Community: No	Faces: South	Lender Approval:	Dock #:
Hardship Pkg: No	Short Sale: No		Covered Prk: 1.00
Waterfront: Yes / Lake Front		Open Parking:	
Garage #: 0	Carport #: 1	# Ceiling Fans:	Main Liv Area:
Parking Desc: Assigned, Attached Carport, Covered, Guest			
Furnished: Unfurnished			
Flooring: Carpet, Laminate			
Construction: CBS			
Private Pool: No			
View: Golf Course, Lake			

Rooms

Main Lvl Bed: 3 **Main Lvl Bath:** 3
Master Bath: Separate Shower
Dining: Dining/Living Room

Room	Dimensions	Level	Description
Living Room	27 X 26	Main	
Kitchen	19 X 10	Main	
Master Bedroom	26 X 13	Main	
Bedroom 2	16 X 11	Main	
Bedroom 3	16 X 12	Main	

Additional Information

Pets: Breed Restrictions, Number Limit, Size **Max # Pets:** 2 **Wgt Limit:** **Pet Fee:**

Interior: Pantry, Storage, Walk-In Closet(s)
Equip/Appl: Dishwasher, Dryer, Range-Electric, Microwave, Refrigerator, Washer
Windows: Blinds **Sprinkler:**
Guest House: **Gated:** Yes
Exterior Feat: Balcony
Assoc Amen: Community Room, Elevator(s), Fitness Center, Internet Included, Library, Manager On Site, Parking, Pickleball Court(s), Sauna, Shuffleboard Court, Spa/Hot Tub, Storage, Tennis Court(s), Trash Chute
Heating: Central
Cooling: Central Air
Restrictions: Buyer Approval Required, Lease Restrictions, No Corporate Buyer, Parking - No Boat, Parking - No Motorcycle, Parking - No RV, Parking - No Truck

Condo

Building #: **Unit Floor:** 15 **Total Floors:** **# Bldg Units:**
Parking Sp #: **Approval Info:** Yes **Balc/Prch/Pat:**
Unit View: Golf Course, Lake
Security: Gated with Guard, Security System
Amenities: Community Room, Elevator(s), Fitness Center, Internet Included, Library, Manager On Site, Parking, Pickleball Court(s), Sauna, Shuffleboard Court, Spa/Hot Tub, Storage, Tennis Court(s), Trash Chute
Govern Bodies: Condominium

Financial Information

Taxes: \$4,625/2024 City/County
Type Assoc: Condominium/\$1,588/Monthly

Mbr Fee:

The information has been provided by the Seller and has not been verified by the Broker. Information is deemed reliable but not guaranteed.

Photos



Envoy Pool3



Envoy Pool2



Envoy building



Photo 4



Photo 5



Photo 6



Photo 7



Photo 8



Photo 9



Photo 10



Photo 11



Photo 12



Photo 13



Photo 14



Photo 15



Photo 16



Photo 17



Photo 18



Photo 19



Photo 20



Photo 21



Envoy Pool1



Photo 23



Photo 24



Photo 25



Photo 26



Photo 27



Photo 28



Photo 29



Photo 30



Photo 31



Photo 32



Photo 33



Photo 34



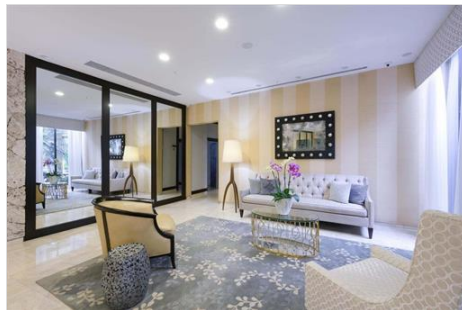
Photo 35



Photo 36



Lobby1



Lobby2



Gym



Socialroom1

Wilhelmus Berndsen | Berndsen & Berndsen Realty | BerndsenBerndsenRealty@gmail.com | Cell: 352-613-6298