

Wilhelmus Berdsen
 Berdsen & Berdsen Realty
BerdsenBerdsenRealty@gmail.com
 Cell: 352-613-6298



2450 Presidential Way, Unit #505, West Palm Beach, Florida 33401

Listing

MLS#: [R11145698](#)
Status: Active

Prop Type: Residential
Type: Condominium

Price: \$694,500
DOM: 103



Residential
List Price: \$694,500 ↓
MLS #: [R11145698](#)
MLS Area: 5410
Zoning: MF32(c)
Type: Condominium
County: Palm Beach
Subdivision: ENVOY COND DECL FILED 12-19-83 IN
Beds: 3 **Baths:** 3/0
SqFt Liv Area: 2,334 **SqFt Total:** 2,584
Year Built: 1984 **Stories Tot:** 20
Style: Colonial, Traditional
Parcel Num: [74434318100005050](#)
Dev Name: ENVOY CONDO

Virtual Tour:
Legal Description
Elementary:
High:

<https://www.propertypanorama.com/2450-Presidential-Way-505-West-Palm-Beach-FL-33401/unbranded>
 ENVOY COND UNIT 505
[Roosevelt](#)
[Palm Beach Lakes](#)

Middle: [Roosevelt Community](#)

Public Remarks : Spectacular, Meticulously Renovated 3 Bedroom, 3 Bath. Prime West Palm Beach Location! Exquisitely Designed unit lives like a home. Over 2,334sqft.! Grandiose Indoor and Outdoor Living Spaces. Two Impressive Terraces with Beautiful Garden views! Architect designed Kitchen. Gorgeous White Porcelain Tile throughout. Stunning Floor to Ceiling Impact Windows and Doors. Expansive and Bright Open Split Bedroom Floor Plan. Ideal for Guests, Privacy and Live-in help. Exceptional Finishes and Craftsmanship. Waterworks Fixtures. Gourmet Chef Kitchen. Top of the line Appliances. Quartz Countertops. Spacious Bedrooms. Luxurious Bathrooms. Laundry Room in unit! Additional Storage Room on same floor as unit. Two Premium Parking Spaces (one in Garage). 24/7 Front Desk Attendant. Private Pool. Fitness Center. Shuffleboard. Community Room. Manned Gated Community. Pet Friendly. Fully Funded Building Reserves. NO SPECIAL Assessments! Fantastic, Convenient Location! Walk to Whole Foods, Shopping, Restaurants. Minutes to Palm Beach Island, Beach, Fine Dining, The new Belgrove Resort & Spa and World renowned Dutchman's Pipe Golf Club. MOVE IN TOMORROW!!! This move-in-ready unit has everything you need and more . . . Must see to appreciate this rare find!

Directions: GPS please

General Information

Sr Community: No	Faces: North	Lender Approval:	
Hardship Pkg: No	Short Sale: No	Open Parking: 1.00	Dock #:
Waterfront: No / Lake Front, Pond	Carport #: 0	# Ceiling Fans:	Covered Prk: 1.00
Garage #: 1	Parking Desc: Assigned, Attached Garage, Detached Carport, Garage, Under Building		Main Liv Area:
Furnished: Unfurnished	Flooring: Ceramic Tile, Marble, Other		
Construction: Block, CBS, Concrete	Lot Desc: Sidewalks		
Private Pool: No	View: Garden, Pond, Pool		

Rooms

Main Lvl Bed: 3 **Main Lvl Bath:** 3
Master Bath: Dual Sinks, Separate Shower, Separate Tub
Dining: Dining/Living Room, Florida/Dining Combination

<u>Room</u>	<u>Dimensions</u>	<u>Level</u>	<u>Description</u>
Living Room	27 X 26	Main	
Kitchen	19 X 8	Main	
Master Bedroom	26 X 13	Main	
Bedroom 2	16 X 11	Main	

Bedroom 3
Great Room
Laundry

12 X 16

Additional Information

Pets: Number Limit, Size Limit, Yes **Max # Pets:** 2 **Wgt Limit:** 15 **Pet Fee:**
Interior: Bar, Bedroom Layout - Split, Closet Cabinetry, Entrance Foyer, Roman Tub, Storage, Walk-In Closet(s)
Equip/App: Dishwasher, Disposal, Dryer, Range-Electric, Water Heater-Electric, Ice Maker, Microwave, Refrigerator, Washer, Water Heater
Windows: Blinds, Drapes, Plantation Shutters, Sliding **Sprinkler:** Auto Sprinkler
Guest House: **Gated:** Yes
Exterior Feat: Balcony, Tennis Court(s)
Assoc Amen: Bike Storage, Clubhouse, Community Room, Elevator(s), Fitness Center, Golf Course, Library, Manager On Site, Parking, Pool, Shuffleboard Court, Sidewalks, Spa/Hot Tub, Storage, Street Lights, Tennis Court(s), Trash Chute
Heating: Central, Electric
Cooling: Central Air, Electric
Water: Public **Sewer:** Public Sewer
Roof: Tar/Gravel
Restrictions: Buyer Approval Required, Lease OK, Lease Restrictions, Other Restrictions

Condo

Building #: 2450 **Unit Floor:** 5 **Total Floors:** **# Bldg Units:**
Cmplx Units: **Min # Days Lse:** 90 **# Times Lsd/Yr:** 1 **# Interior Lev:**
Parking Sp #: **Approval Info:** Yes **Balc/Prch/Pat:**
Unit Design: Colonial, Traditional
Unit View: Garden, Pond, Pool
Security: Gated with Guard, Lobby - Attended, Security Lights, Security Patrol, Security System, Smoke Detector(s)
Amenities: Bike Storage, Clubhouse, Community Room, Elevator(s), Fitness Center, Golf Course, Library, Manager On Site, Parking, Pool, Shuffleboard Court, Sidewalks, Spa/Hot Tub, Storage, Street Lights, Tennis Court(s), Trash Chute
Govern Bodies: Condominium

Financial Information

Taxes: \$8,062/2025 City/County, No Homestead
Terms: Cash, Conventional, FHA, Trade **Assumable:**
Type Assoc: Condominium/\$1,588/Monthly **Mbr Fee:**

The information has been provided by the Seller and has not been verified by the Broker. Information is deemed reliable but not guaranteed.

Photos



IMG_0057



IMG_0058



IMG_0059



IMG_0061



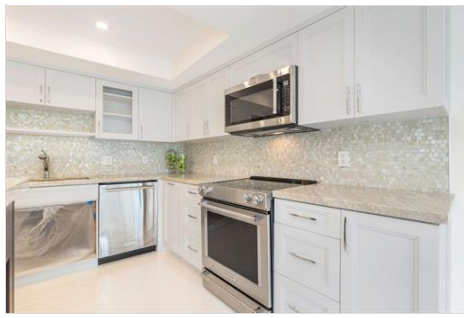
IMG_0062



IMG_0063



IMG_0064



IMG_0065



IMG_0066



IMG_0067



IMG_0068



IMG_0069



IMG_0070



IMG_0072



IMG_0071



IMG_0073



IMG_0074



IMG_0075



IMG_0076



IMG_0077



IMG_0078



IMG_0079



IMG_0060



IMG_0056



IMG_0080



IMG_0081



IMG_0082



IMG_0083



IMG_0084



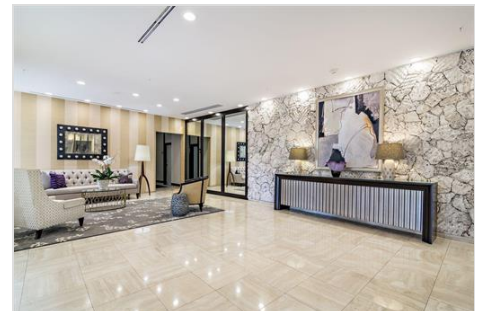
IMG_0085



IMG_0086



IMG_0087



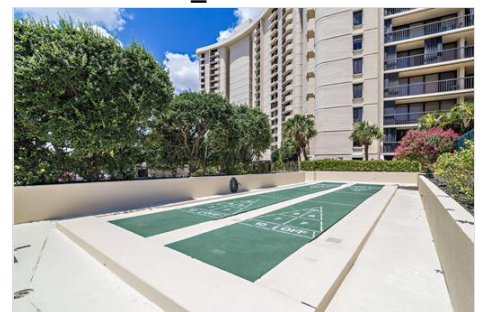
IMG_0088



IMG_0089



IMG_0090



IMG_0091



IMG_0092



IMG_0093



IMG_0094



IMG_0095