

**Wilhelmus Berdsen**  
 Berdsen & Berdsen Realty  
 BerdsenBerdsenRealty@gmail.com  
 Cell: 352-613-6298



## 2480 Presidential Way, Unit #603, West Palm Beach, Florida 33401

Listing

**MLS#:** [R11122207](#)  
**Status:** Active

**Prop Type:** Residential  
**Type:** Condominium

**Price:** \$475,000  
**DOM:** 188



Residential  
**List Price:** \$475,000 ↓  
**MLS #:** [R11122207](#)  
**MLS Area:** 5410  
**Zoning:** 0040-condominiu  
**Type:** Condominium  
**County:** Palm Beach  
**Subdivision:** Lands of the President/The Envoy  
**Beds:** 2 **Baths:** 2/0  
**SqFt Liv Area:** 1,855 **SqFt Total:** 2,200  
**Year Built:** 1984 **Stories Tot:** 19  
**Style:** Colonial  
**Parcel Num:** [744343181000006030](#)  
**Dev Name:** LANDS OF THE PRESIDENT

**Virtual Tour:**  
**Legal Description**  
**Elementary:**  
**High:**

<https://www.propertypanorama.com/2480-Presidential-Way-603-West-Palm-Beach-FL-33401/unbranded>  
 ENVOY COND UNIT 603  
[Roosevelt](#)  
[Palm Beach Lakes](#)

**Middle:** [Roosevelt Community](#)

**Public Remarks :** Welcome to this Sublime fully renovated furnished apartment designed by PB renowned Art and Design Co. The apt is located in a very sought-after pet friendly, full service building in the only gated community just east of I-95. The result is a chic comfortable space featuring an open spacious floor plan with gorgeous finishes including oak finishes, marble floors, gourmet Chef Kitchen with top of the line appliances, quartz countertops, custom cabinets, custom wooden doors and frames, gorgeous bathrooms and split large bedrooms. Floor to ceiling sliding door/windows a large balcony offers beautiful views on the well maintained gardens of the association. The Envoy is known to be a very social building with a private "North One Club" during the season. 24/7 concierge & manager on site. Here is more information about the interior of the unit. The wood panels and doors are curly maple and tiger wood. Travertine and marble floors, channel wool carpets and Trefenkain Area Rugs Counters are Lapidus Granite. Sinks and toilets and fixtures are Kohler. Kitchen sink is Frandie and a GE monogram double wine cabinet for reds and white wines. Furniture is Roche Bobois. This building is located in a prime location with short distance to PBI Airport, Palm Beach Island and Beaches and West Palm Beach is truly a booming Mega Center for culture w/ Kravis Ctr, Norton Museum, fine shopping and dining. Lands of the President is just adjacent to the Tanner Outlet Mall w/ Whole Foods, Saks of Fifth, Nordstrom, Marshalls, Home Goods, and the recently newly opened Belgrove Marriott Autograph Hotel & the Dutchman's Pipe Country & Golf Club.

**Directions:** Palm Beach Lakes Blvd, go north at N Congress Ave, make a right at Presidential Way. After the gate house, continue to The Envoy at right. Park at guest parking with yellow parking stops.

### General Information

<b>Sr Community:</b> No	<b>Faces:</b> Northeast	<b>Lender Approval:</b>	
<b>Hardship Pkg:</b>	<b>Short Sale:</b> No	<b>Open Parking:</b> 0.00	<b>Dock #:</b>
<b>Waterfront:</b> No / Lake Front, Pond	<b>Carport #:</b> 1		<b>Covered Prk:</b> 1.00
<b>Garage #:</b> 0		<b># Ceiling Fans:</b>	<b>Main Liv Area:</b>
<b>Parking Desc:</b> Covered, Deeded, Detached Carport		<b>Spa:</b> Yes	
<b>Furnished:</b> Furnished			
<b>Flooring:</b> Carpet, Ceramic Tile, Wood			
<b>Construction:</b> CBS			
<b>Lot Desc:</b> Sidewalks			
<b>Private Pool:</b> No / Heated, In Ground			
<b>Pool Dim:</b>			
<b>View:</b> Garden, Golf Course, Lake			

### Rooms

**Main Lvl Bed:** 2 **Main Lvl Bath:** 2  
**Master Bath:** 2 Master Baths, 2 Master Suites, Dual Sinks, Spa Tub & Shower  
**Dining:** Dining/Living Room

<u>Room</u>	<u>Dimensions</u>	<u>Level</u>	<u>Description</u>
Bedroom 2	20 X 12	Main	
Living Room	20 X 24	Main	
Kitchen	10 X 14	Main	
Master Bedroom	20 X 12	Main	
Laundry			

### Additional Information

**Pets:** Breed Restrictions, Number Limit, Size **Max # Pets:** 20 **Wgt Limit:** 20 **Pet Fee:** \$150 / Limit, Yes

**Interior:** Bedroom Layout - Split, Built-in Features, Pantry, Storage, Walk-In Closet(s)

**Equip/App:** Dishwasher, Dryer, Range-Electric, Water Heater-Electric, Ice Maker, Microwave, Refrigerator, Washer, Water Heater

**Windows:** Blinds, Sliding **Sprinkler:** Gated: Yes

**Guest House:**

**Exterior Feat:** Balcony

**Assoc Amen:** Bike Storage, Billiard Room, Community Room, Elevator(s), Fitness Center, Internet Included, Library, Lobby, Manager On Site, Parking, Pool, Putting Green, Sauna, Spa/Hot Tub, Street Lights, Tennis Court(s), Trash Chute

**Heating:** Central, Electric

**Cooling:** Central Air, Electric

**Water:** Public **Sewer:** Public Sewer

**Roof:** Other

**Restrictions:** Buyer Approval Required, Lease Restrictions

### Condo

**Building #:** 2480 **Unit Floor:** 6 **Total Floors:** **# Bldg Units:**

**# Cmplx Units:** **Min # Days Lse:** 90 **# Times Lsd/Yr:** 1 **# Interior Lev:**

**Parking Sp #:** **Approval Info:** Yes **Balc/Prch/Pat:**

**Unit Design:** Colonial

**Unit View:** Garden, Golf Course, Lake

**Security:** Closed Circuit Camera(s), Fire Sprinkler System, Gated with Guard, Lobby - Attended, Security Patrol, Security System, Smoke Detector(s)

**Amenities:** Bike Storage, Billiard Room, Community Room, Elevator(s), Fitness Center, Internet Included, Library, Lobby, Manager On Site, Parking, Pool, Putting Green, Sauna, Spa/Hot Tub, Street Lights, Tennis Court(s), Trash Chute

**Govern Bodies:** Condominium

### Financial Information

**Taxes:** \$3,911/2024 City/County **Assumable:**

**Terms:** Cash, Conventional **Mbr Fee:**

**Type Assoc:** Condominium/\$1,263/Monthly

The information has been provided by the Seller and has not been verified by the Broker. Information is deemed reliable but not guaranteed.

#### Photos



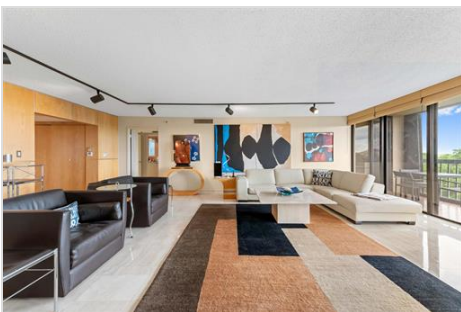
**LIVING ROOM**



**LIVING ROOM**



**LIVING ROOM**



**LIVING ROOM**



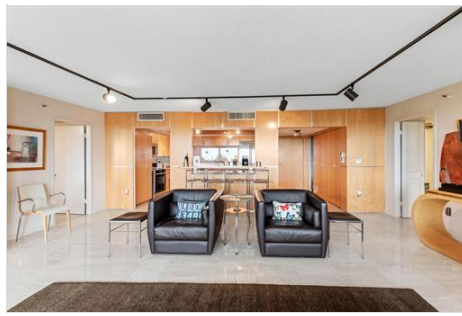
**OPEN CONCEPT LIVING ROOM**



**FLORIDA DINING**



**LIVING ROOM**



**LIVING ROOM**



**ENTRY**



**KITCHEN**



**KITCHEN**



**OPEN KITCHEN**



**ENTRANCE + BAR AREA**



**LAUNDRY ROOM**



**BALCONY**



**BALCONY GARDEN VIEW**



**LARGE BALCONY**



**FLORIDA LIVING**



**PRINCIPAL BEDROOM**



**PRINCIPAL BEDROOM**



**PRINCIPAL BEDROOM**



**PRINCIPAL BATHROOM**



**PRINCIPAL BATHROOM**



**PRINCIPAL BATH ROOM**



**GUEST BEDROOM**



**GUEST BEDROOM**



**GUEST BEDROOM**



**GUEST BATHROOM**



**THE ENVOY ENTRANCE**



**THE ENVOY RECEPTION**



**THE ENVOY LOBBY**



**THE ENVOY LOBBY**



**CORRIDOR**



**CORRIDOR**



**CORRIDOR**



**THE ENVOY**



**THE ENVOY**



**THE ENVOY**



**THE ENVOY**



**THE ENVOY**