

Wilhelmus Berdsen
 Berdsen & Berdsen Realty
 BerdsenBerdsenRealty@gmail.com
 Cell: 352-613-6298



2500 Presidential Way, Unit #101, West Palm Beach, Florida 33401

Listing

MLS#: [A12008836](#) **Prop Type:** Residential **Price:** \$225,000
Status: Active **Type:** Condominium **DOM:** 42



Residential
List Price: \$225,000
MLS #: [A12008836](#)
MLS Area: 5410
Zoning:
Type: Condominium
County: Palm Beach
Subdivision: LANDS OF THE PRESIDENT CO
Beds: 2 **Baths:** 2/0
SqFt Liv Area: 1,045 **SqFt Total:** 1,220
Year Built: 1975 **Stories Tot:** 5
Parcel Num: [74434307020281010](#)

Virtual Tour: <https://www.propertypanorama.com/instaview/mia/A12008836>

Legal Description: LANDS OF THE PRESIDENT COND 8AUNIT 28-101

Elementary: [Roosevelt](#)

Middle: [Roosevelt Community](#)

High: [Palm Beach Lakes](#)

Public Remarks : All ages welcome! This first-floor corner unit is located in a secure gated community and offers ultimate convenience with nearby parking. The home features an ideal split-bedroom floor plan with 2 bedrooms and 2 bathrooms, providing maximum privacy. Enjoy a bright interior and a private wrap-around balcony with relaxing garden views, along with a generous dining and entertaining area. For added convenience, the unit includes an in-unit washer/dryer and a private outdoor storage closet. Residents can enjoy the on-site pool and clubhouse. The location is a major plus: just 5 minutes from I-95 and the Palm Beach Outlets, minutes from the beach, and close to Downtown and PBI Airport. Excellent walkability with restaurants and coffee shops just steps away.

General Information

Senior Cmty: No **Faces:**
Waterfront: No
Garage #: 0 **Carport #:** 0 **Open Parking:** **Covered Prk:** 0.00
Flooring: Ceramic Tile
Construction: Other
View: Garden
Unit Desc: Garden Apartment

Rooms

Master Bath: Bedroom On Entry Level, Master Bdrm - Ground

Additional Information

Pets: No/No **Max # Pets:** **Wgt Limit:** **Pet Fee:**
Equip/Apppl: Dishwasher, Dryer, Range-Electric, Water Heater-Electric, Refrigerator, Washer
Exterior Feat: Balcony, Other
Assoc Amen: Clubhouse, Parking, Pool
Heating: Central, Other
Cooling: Central Air
Restrictions: Other Restrictions

Condo

Building #: **Unit Floor:** 1 **Total Floors:** **# Bldg Units:**
Cmplx Units: **Min # Days Lse:** 90 **# Times Lsd/Yr:** 2 **# Interior Levl:**
Parking Sp #: **Approval Info:** Yes **Balc/Prch/Pat:**
Unit View: Garden
Security: Other , Security Patrol
Govern Bodies: Condominium

Financial Information

Taxes: \$3,744/2024 Tax Reflects No Exemptions
Terms: Cash, Conventional, VA
Type Assoc: Condominium/\$760/Monthly

Assumable:
Mbr Fee:

The information has been provided by the Seller and has not been verified by the Broker. Information is deemed reliable but not guaranteed.

Photos



Photo 1



Photo 2



Photo 3



Photo 4

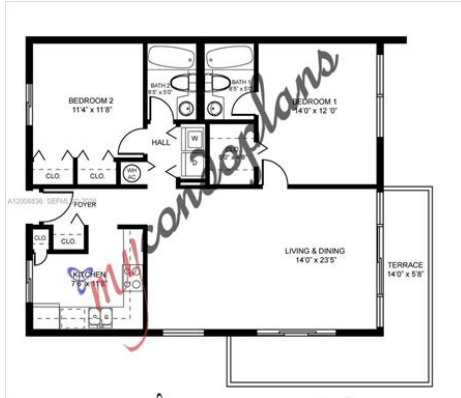


Photo 5



Photo 6



Photo 7



Photo 8



Photo 9



Photo 10



Photo 11



Photo 12



Photo 13



Photo 14



Photo 15



Photo 16



Photo 17



Photo 18



Photo 19



Photo 20



Photo 21



Photo 22

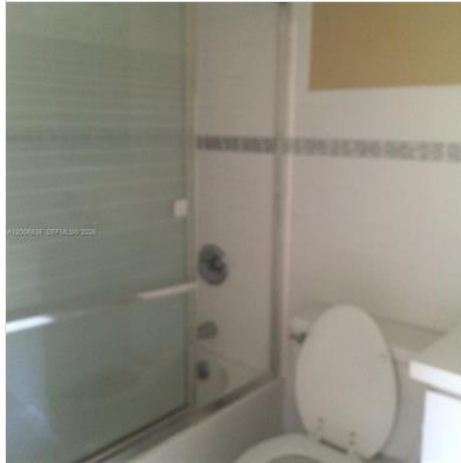


Photo 23



Photo 24



Photo 25



