

Wilhelmus Berdsen
 Berdsen & Berdsen Realty
 BerdsenBerdsenRealty@gmail.com
 Cell: 352-613-6298



2517 Presidential Way, Unit #B, West Palm Beach, Florida 33401

Listing

MLS#: [R11154317](#) **Prop Type:** Residential **Price:** \$599,999
Status: Active **Type:** Villa **DOM:** 138



Residential
List Price: \$599,999
MLS #: [R11154317](#)
MLS Area: 5410
Zoning: res
Type: Villa
County: Palm Beach
Subdivision: PARLIAMENT GOLF VILLAS CONDO
Beds: 3 **Baths:** 3/1
SqFt Liv Area: 2,632 **SqFt Total:** 3,415
Units: **# Stories:** 2
Year Built: 1982 **Stories Tot:** 2
Parcel Num: [74434318070040020](#)
Dev Name: PARLIAMENT GOLF VILLAS CONDO

Virtual Tour: <https://www.propertypanorama.com/2517-Presidential-Way-B-West-Palm-Beach-FL-33401/unbranded>
Legal Description: PARLIAMENT GOLF VILLAS CONDO APT B

Public Remarks : Investor Ready, tenant in place. Don't miss the opportunity to own this beautifully renovated 3 bedroom, 3.5 bath villa! Enter through the private courtyard from your 2 covered parking spaces and step into a spacious, welcoming foyer. A stylishly updated powder room is conveniently located on the first floor. The open, airy floor plan includes a cozy breakfast nook, perfect for relaxed mornings with family- and a breakfast bar ideal for casual dining or gathering during meal prep. A separate dining room offers an elegant space for entertaining and holiday meals. Step down into the inviting living room with built-in wet bar, or unwind in the sunroom that opens to your private patio and backyard oasis. The large laundry room is a dream complete with abundant cabinetry and utility sink. Best of all, there's no carpet - just beautiful, low maintenance vinyl plank flooring throughout. Upstairs, the spacious master suite is a true retreat with dual bathrooms, one for each resident. The custom fitted walk-in closet is a woman's dream come true. Two additional generously sized bedrooms share a full bath with double sinks and a tub/shower combination, offering comfort and privacy for guests and family. Don't miss the chance to make this stunning villa part of your rental portfolio or your personal paradise.

General Information

Senior Cmty: No	Faces: East	Lender Approval:
Hardship Pkg:	Short Sale: No	
Waterfront: No / None		
Garage #: 0	Carport #: 2	Open Parking:
Parking Desc: Covered, Deeded		Covered Prk: 2.00
Furnished: Unfurnished		Parking Total:
Flooring: Vinyl		# Ceiling Fans:
Construction: CBS		Main Liv Area:
Private Pool: No		
View: Garden, Golf Course		

Rooms

Main Lvl Bed: 0 **Main Lvl Bath:** 1
Master Bath: Dual Sinks, Master Bdrm - Upstairs, Separate Shower, Separate Tub
Dining: Breakfast Area, Formal Dining

Additional Information

Pets: Yes/Breed Restrictions, Yes	Max # Pets:	Wgt Limit:	Pet Fee:
Interior: Entrance Foyer, Kitchen Island, Wet Bar			
Equip/Apppl: Cooktop, Dishwasher, Disposal, Dryer, Water Heater-Electric, Microwave, Oven, Refrigerator, Washer, Water Heater			
Guest House:	Gated: Yes		
Assoc Amen: Sidewalks			
Heating: Central, Electric			
Cooling: Electric			

Water: Public
Restrictions: Buyer Approval Required, Lease OK, Parking - No RV

Sewer: Public Sewer

Financial Information

Taxes: \$8,900/2024 City/County
Terms: Cash, Conventional
Type Assoc: Condominium/\$875/Monthly

Assumable:
Mbr Fee:

The information has been provided by the Seller and has not been verified by the Broker. Information is deemed reliable but not guaranteed.

Photos



Parliament Golf Villas Entrance



Living Room



Living Room



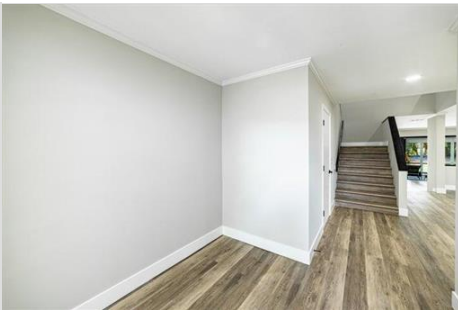
Dining Room



Kitchen



Powder Room



Vinyl Plank Floors



Back Patio



Back Screened Patio



Back Yard



Back Yard



Stairs



Stairs



Storage



Laundry Room



Primary Bedroom



Primary Bedroom



primary bathroom



primary bathroom



Primary Bathroom



Primary Bathroom & Walk-in Closet



Walk In Closet-E



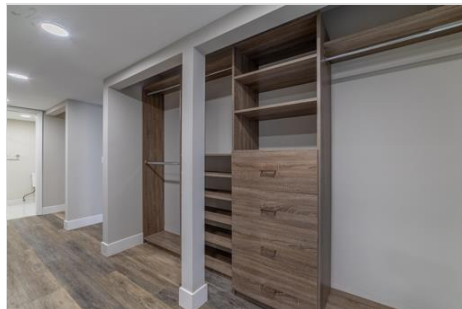
Walk In Closet



Walk In Closet-D



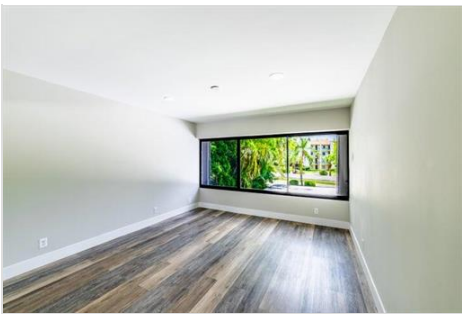
Walk In Closet-B



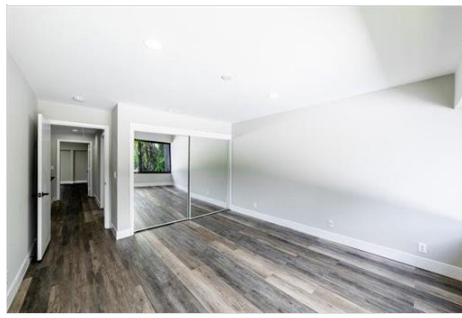
Walk In Closet-C



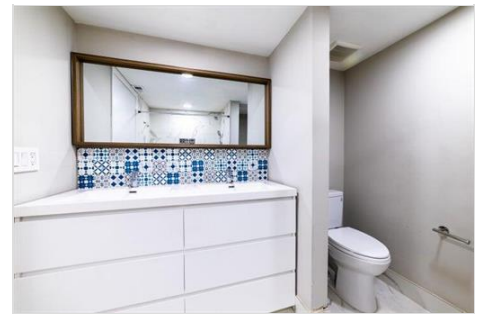
Upstairs Balcony



Bedroom 2



Bedroom 2



Bathroom



Bathroom



Bedroom 3



Front Entrance & Patio



Front Entrance



2 Car Covered Parking



2 Car Covered Parking



Banyon Golf Course



Aerial



Aerial



Aerial