

**Wilhelmus Berdsen**  
 Berdsen & Berdsen Realty  
 BerdsenBerdsenRealty@gmail.com  
 Cell: 352-613-6298



## 3050 Presidential Way, Unit #101, West Palm Beach, Florida 33401

Listing

**MLS#:** [A12008573](#) **Prop Type:** Residential **Price:** \$225,000  
**Status:** Active **Type:** Condominium **DOM:** 42



Residential  
**List Price:** \$225,000  
**MLS #:** [A12008573](#)  
**MLS Area:** 5410  
**Zoning:**  
**Type:** Condominium  
**County:** Palm Beach  
**Subdivision:** LANDS OF THE PRESIDENT CO  
**Beds:** 2 **Baths:** 2/0  
**SqFt Liv Area:** 1,045 **SqFt Total:** 1,220  
**Year Built:** 1975 **Stories Tot:** 6  
**Parcel Num:** [74434307020321010](#)

**Virtual Tour:** <https://www.propertypanorama.com/instaview/mia/A12008573>  
**Legal Description:** LANDS OF THE PRESIDENT COND 8AUNIT 32-101  
**Elementary:** [Roosevelt](#) **Middle:** [Roosevelt Community](#)  
**High:** [Palm Beach Lakes](#)

**Public Remarks :** First-floor condo located in a gated golf community with a 24H guard gate. All ages welcome; no mandatory membership for the on-site Banyan Cay Golf Club. This corner unit offers a private and relaxing garden view with an ideal split-bedroom floor plan for privacy. Features include 2 bedrooms, 2 bathrooms, and the convenience of in-unit laundry. Bright and generous entertaining area with a wrap-around balcony. The community offers a pool and clubhouse. Private parking and storage included. Excellent location, steps from the outlets, Downtown, and PBI Airport, and just minutes to the beaches, restaurants, and more. Property will sell fully furnished, Property is rented, please allow 24h for showings.

### General Information

**Senior Cmty:** No **Faces:**  
**Waterfront:** No  
**Garage #:** 0 **Carport #:** 0 **Open Parking:** **Covered Prk:** 0.00  
**Parking Desc:** Detached, Guest **Parking Total:**  
**Flooring:** Laminate, Vinyl  
**Construction:** Other  
**View:** Garden  
**Unit Desc:** Corner/End Unit

### Rooms

**Master Bath:** Bedroom On Entry Level, Other

### Additional Information

**Pets:** Yes/No, No Restrictions **Max # Pets:** **Wgt Limit:** **Pet Fee:**  
**Equip/App:** Dishwasher, Dryer, Range-Electric, Water Heater-Electric, Refrigerator  
**Assoc Amen:** Parking, Pool  
**Heating:** Central, Electric  
**Cooling:** Central Air  
**Restrictions:** Other Restrictions

### Condo

**Building #:** **Unit Floor:** 1 **Total Floors:** **# Bldg Units:**  
**# Cmplx Units:** **Min # Days Lse:** 90 **# Times Lsd/Yr:** 2 **# Interior Lev:**  
**Parking Sp #:** **Approval Info:** Yes **Balc/Prch/Pat:**  
**Unit View:** Garden  
**Security:** Other , Security Guard  
**Govern Bodies:** Condominium

Financial Information

**Taxes:** \$3,744/2025 Tax Reflects No Exemptions  
**Terms:** Cash, Conventional, VA  
**Type Assoc:** Condominium/\$770/Monthly

**Assumable:**  
**Mbr Fee:**

The information has been provided by the Seller and has not been verified by the Broker. Information is deemed reliable but not guaranteed.

Photos



Photo 1



Photo 2



Photo 3

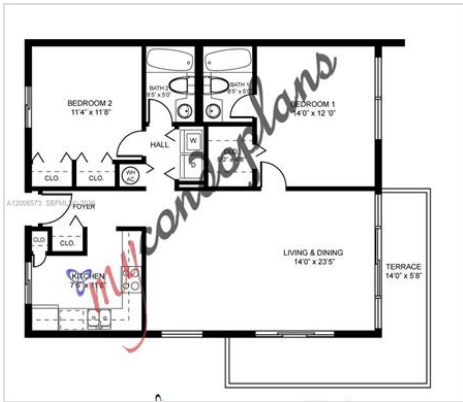


Photo 4

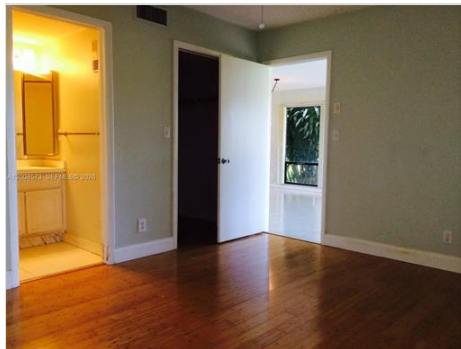


Photo 5



Photo 6

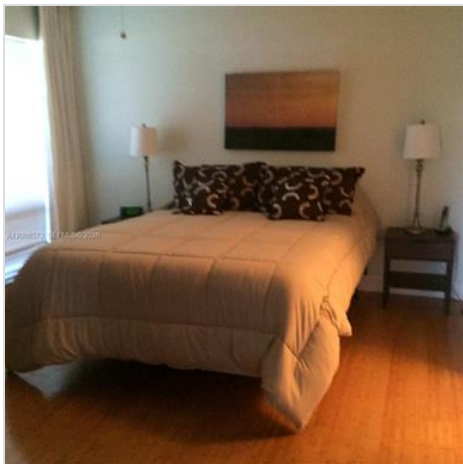


Photo 7



Photo 8



Photo 9



Photo 10



Photo 11



Photo 12



Photo 13



Photo 14



Photo 15



Photo 16



Photo 17



Photo 18



Photo 19



Photo 20



**Photo 21**



**Photo 22**



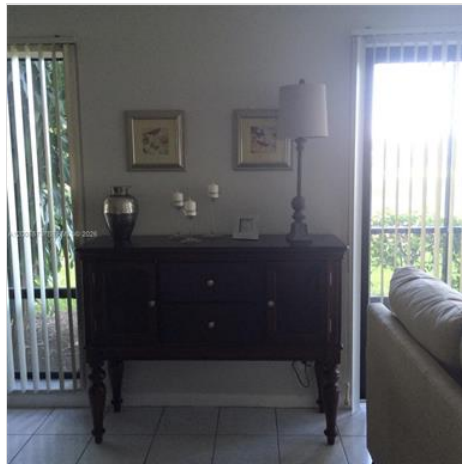
**Photo 23**



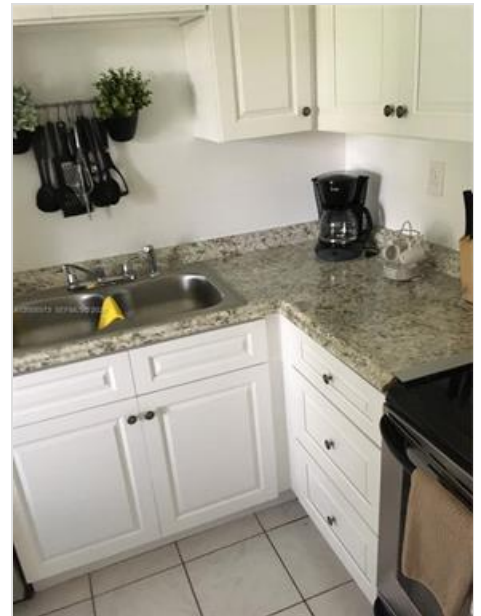
**Photo 24**



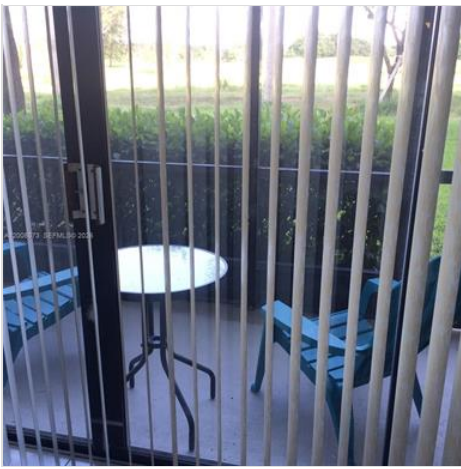
**Photo 25**



**Photo 26**



**Photo 27**



**Photo 28**



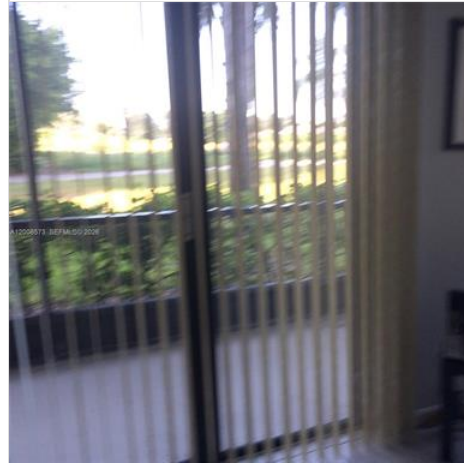
**Photo 29**



**Photo 30**



**Photo 31**



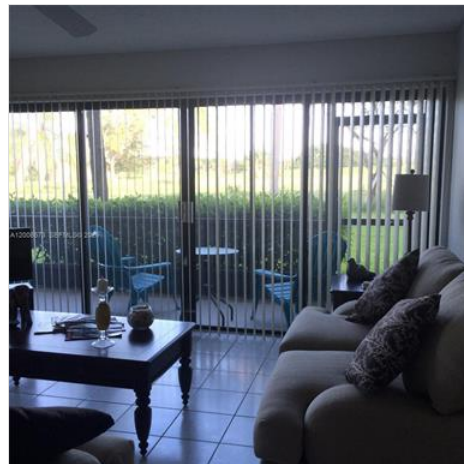
**Photo 32**



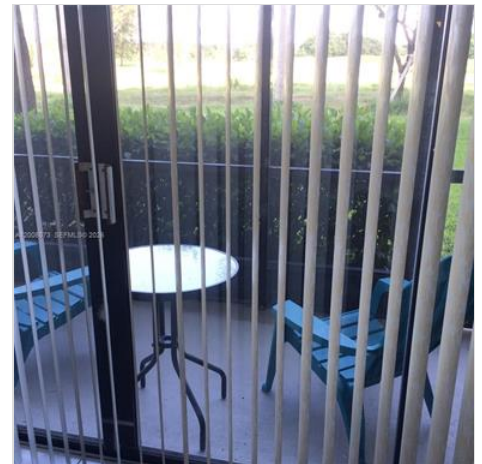
**Photo 33**



**Photo 34**



**Photo 35**



**Photo 36**



**Photo 37**



**Photo 38**



**Photo 39**



**Photo 40**