

**Wilhelmus Berdsen**  
 Berdsen & Berdsen Realty  
[BerdsenBerdsenRealty@gmail.com](mailto:BerdsenBerdsenRealty@gmail.com)  
 Cell: 352-613-6298



## 3540 Whitehall Dr, Unit #203, West Palm Beach, Florida 33401

Listing

**MLS#:** [R11139528](#)  
**Status:** Active

**Prop Type:** Residential  
**Type:** Condominium

**Price:** \$195,000  
**DOM:** 148



Residential  
**List Price:** \$195,000 ↓  
**MLS #:** [R11139528](#)  
**MLS Area:** 5410  
**Zoning:** MF32(c)  
**Type:** Condominium  
**County:** Palm Beach  
**Subdivision:** WHITEHALL CONDO OF THE LANDS OF THE PRESIDENT  
**Beds:** 2 **Baths:** 2/2  
**SqFt Liv Area:** 1,437 **SqFt Total:** 1,437  
**Year Built:** 1984 **Stories Tot:** 4  
**Parcel Num:** [74434307060122030](#)

**Virtual Tour:**  
**Legal Description**  
**Elementary:**  
**High:**

<https://www.propertypanorama.com/3540-Whitehall-Drive-203-West-Palm-Beach-FL-33401/unbranded>  
 COND 12 OF WHITEHALL CONDS OF THE LANDS OF THE PRESIDENT UNIT 203  
**Middle:** [Roosevelt Community](#)  
[Roosevelt](#)  
[Palm Beach Lakes](#)

**Public Remarks :** Welcome home to 3540 Whitehall Dr #203 in the heart of West Palm Beach! This bright and inviting 2-bedroom, 2-bath condo has been lovingly maintained and offers comfortable living in the sought-after gated community of Whitehall. The open layout provides a spacious feel, and the large windows fill the home with natural light while showcasing a beautiful water view. Inside, you'll find generously sized bedrooms, ample storage, and an in-unit laundry room with bonus space that can double as a small office or hobby area. While the condo hasn't been updated, it's in excellent condition and move-in ready. Resort-style amenities include a pool, clubhouse, and walking paths-all just minutes from Palm Beach Outlets, I-95, downtown West Palm Beach and Palm Beach International Airport.

**Directions:** ON CONGRESS (OFF PALM BEACH LAKES BLVD) ENTRANCE SAYS PRESIDENTIAL ESTATES

### General Information

<b>Sr Community:</b> No	<b>Faces:</b> West	<b>Lender Approval:</b>	<b>Dock #:</b>
<b>Hardship Pkg:</b>	<b>Short Sale:</b> No	<b>Open Parking:</b>	<b>Covered Prk:</b> 0.00
<b>Waterfront:</b> No / Lake Front	<b>Carport #:</b>	<b># Ceiling Fans:</b>	<b>Main Liv Area:</b>
<b>Garage #:</b> 0			
<b>Parking Desc:</b> Assigned			
<b>Furnished:</b> Unfurnished			
<b>Flooring:</b> Carpet			
<b>Construction:</b> Block			
<b>Private Pool:</b> No			
<b>View:</b> Lake			

### Rooms

**Main Lvl Bed:** 2 **Main Lvl Bath:** 2  
**Master Bath:** Separate Shower  
**Dining:** Dining/Living Room

<u>Room</u>	<u>Dimensions</u>	<u>Level</u>	<u>Description</u>
Living Room	129 X 219	Main	
Living Room	129 X 142	Main	
Kitchen	87 X 107	Main	
Master Bedroom	13 X 1710	Main	
Bedroom 3	13 X 114	Main	
Laundry			

[Additional Information](#)

**Additional Information**

<b>Pets:</b>	Pet Restrictions Possible, Yes	<b>Max # Pets:</b>	<b>Wgt Limit:</b>	<b>Pet Fee:</b>
<b>Interior:</b>	Bedroom Layout - Split, Walk-In Closet(s)			
<b>Equip/Apppl:</b>	Dishwasher, Dryer, Range-Electric, Water Heater-Electric, Microwave, Refrigerator, Washer, Water Heater			
<b>Windows:</b>	Blinds	<b>Sprinkler:</b>		
<b>Guest House:</b>		<b>Gated:</b>	Yes	
<b>Exterior Feat:</b>	None			
<b>Assoc Amen:</b>	Clubhouse, Elevator(s), Pool			
<b>Heating:</b>	Central			
<b>Cooling:</b>	Ceiling Fan(s), Central Air			
<b>Water:</b>	Public	<b>Sewer:</b>	Public Sewer	
<b>Restrictions:</b>	Buyer Approval Required			

**Condo**

<b>Building #:</b>	<b>Unit Floor:</b>	203	<b>Total Floors:</b>	<b># Bldg Units:</b>
<b># Cmplx Units:</b>	<b>Min # Days Lse:</b>		<b># Times Lsd/Yr:</b>	<b># Interior Lev:</b> Multi/Split
<b>Parking Sp #:</b>	<b>Approval Info:</b>	Yes		<b>Balc/Prch/Pat:</b>
<b>Unit View:</b>				
<b>Security:</b>	Gated with Guard, Security Patrol			
<b>Govern Bodies:</b>	Condominium			

**Financial Information**

<b>Taxes:</b>	\$833/2024 City/County	<b>Assumable:</b>
<b>Terms:</b>	Cash, Conventional	<b>Mbr Fee:</b>
<b>Type Assoc:</b>	Condominium/\$642/Monthly	

The information has been provided by the Seller and has not been verified by the Broker. Information is deemed reliable but not guaranteed.

**Photos**



**Kitchen**



**Entrance**



**Hallway**



**kitchen**



**kitchen**



**Dining Room**



**Dining Room**



**Living Room**



**Living Room**



**STEETS (11)**



**Bedroom**



**Bedroom**



**Bedroom**



**Bedroom**



**Primary Bathroom**



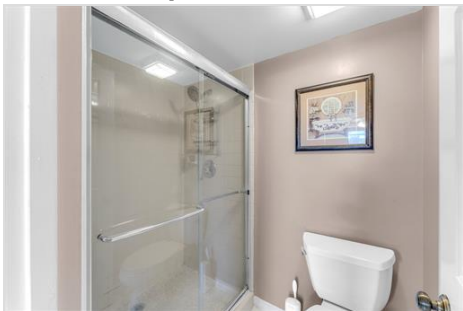
**Primary Bathroom**



**Primary Closet**



**Bathroom**



**Bathroom**



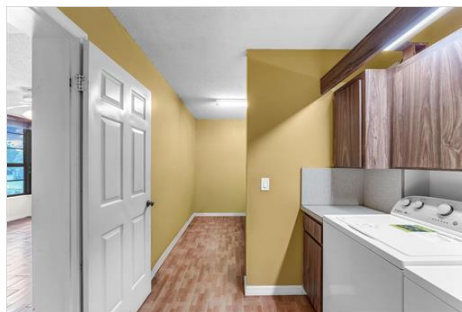
**Bathroom**



**Bathroom**



**Laundry**



**Laundry**



**Laundry**



Hallway



Hallway



Secondary Bathroom



Secondary Bedroom



Secondary Bedroom



Secondary Bedroom



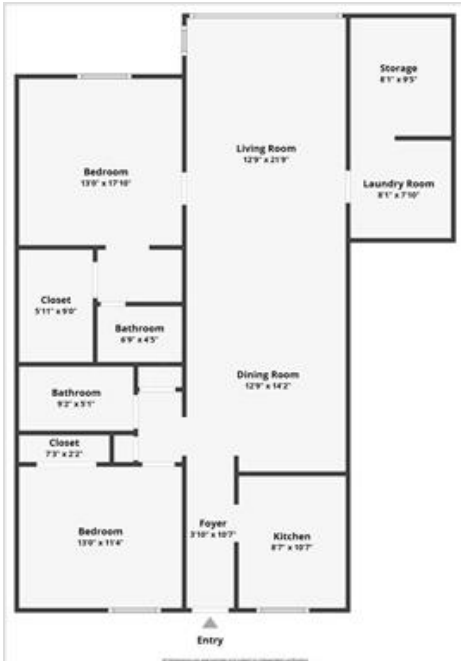
Secondary Bedroom



33-JS Luxe Media (33)



Outside Front



36-3540 Whitehall Dr\_Floor Plan