



**Wim Berndsen**  
 Cell: 352-613-6298  
 wimberndsenrealtor@gmail.com  
 BerndsenBerndsenRealty.com  
 BerndsenBerndsenRealty@gmail.com



**Berndsen & Berndsen Realty**  
 West Palm Beach

Listing

**2000 Presidential Way # 705 West Palm Beach, FL 33401**



Condo/Co-Op/Villa/Townhouse  
**List Price:** \$224,000  
**MLS #:** [R10998061](#)  
**Status:** Active **MLS Area:** 5410  
**Zoning:** MF32(c)  
**Type:** Condo  
**Prop Class:** Condo/Co-Op/Villa/Townhouse  
**County:** Palm Beach  
**Subdivision:** LANDS OF THE PRESIDENT CO  
**Beds:** 1 **Baths:** 1/1  
**SqFt Liv Area:** 894 **SqFt Total:** 1,048  
**Year Built:** 1972/Resale  
**Style:** C42-Condo 5+ Stories  
**Parcel Num:** 74434317090007050

**Legal Description:** LANDS OF THE PRESIDENT COND 2 UNIT 705  
**Virtual Tour:** <https://www.propertypanorama.com/2000-Presidential-Way-705-West-Palm-Beach-FL-33401/unbranded>  
**Maint Fee Incl:** Lawn Mowing, Security

**Remarks:** Experience the ultimate in West Palm Beach living with this newly updated 1-bed, 1.5-bath condo boasting breathtaking views of the city. Enjoy a renovated kitchen w/ ample storage & bathrooms, perfect for your Florida retreat complete with a washer and dryer in-unit for convenience. The seller has covered all assessments and HOA dues for the year, offering worry-free ownership. A manned security gate offers peace of mind day and night. Relax by the pool or consider membership at the exclusive Jack Nicklaus-designed Dutchman Pipe golf course nearby. Explore West Palm Beach's premier shopping at the outlet mall just moments away. Live the vibrant city life without compromise in this prime location!

**Directions:** Palm Beach Lakes to N Congress Ave. East on Presidential Way, follow until you see sign for Washington Tower Condos

**General Information**

<b>HOPA:</b> No HOPA	<b>Short Sale:</b> No	<b>Faces:</b>	<b>Apx Lot Size:</b>
<b>REO:</b> No		<b>Lender Apprv:</b>	<b>Build Lot/Unit#:</b>
<b>Builder Name:</b>	<b>How Paid:</b>	<b>Proj Comp Date:</b>	
<b>Comm Dev Dist:</b>		<b>Amt Annually:</b>	<b>Dock #:</b>
<b>Waterfront:</b> No		<b>Carport #/Desc:</b>	<b>Main Liv Area:</b>
<b>Garage #/Desc:</b> 0		<b># Ceiling Fans:</b>	
<b>Furnished:</b> Unfurnished		<b>Parking Rstrct:</b>	
<b>Parking:</b> Assigned Parking, Guest Parking		<b>Lot Desc:</b>	
<b>Flooring:</b> Carpeted Floors, Tile Floors			
<b>Construction:</b> Cbs Construction			
<b>Private Pool:</b> No			

**Rooms**

**Rooms:** Laundry  
**Dining:** Dining/Living Room

**Additional Information**

<b>Pets:</b>	<b>Cable Avail:</b> Yes
<b>Interior:</b> Elevator, Walk-In Closets	
<b>Equip/Apppl:</b> Dishwasher, Dryer, Electric Range, Refrigerator, Washer	
<b>Subdivision:</b> Community Pool, Management On Site	
<b>Maint Includes:</b> Common Area, Maintenance Incl Bldg Exterior, Maintenance Incl Lawn/Lndscp Care, Maintenance Incl Security, Insurance, Manager, Reserve Fund, Roof Repairs, Security, Water	
<b>Heating:</b> Central Heat, Electric Heat	
<b>Cooling:</b> Ceiling Fans, Central Cooling, Electric Cooling	
<b>Water:</b> Public Water	<b>Sewer:</b> Sewer
<b>Restrictions:</b> Assoc Approval Required, OK To Lease	

**Condo**

<b>Building #:</b>	<b>Unit Floor:</b> 7	<b>Total Floors:</b> 19	<b># Bldg Units:</b>
<b>Amenities:</b> Bike Storage, Business Center, Community Pool, Community Room, Fitness Center, Library, Management On Site, Pool, Trash Chute			
<b>Complex Name:</b> LANDS OF THE PRESIDENT CO	<b>Govern Bodies:</b> Condominium		

**Financial Information**

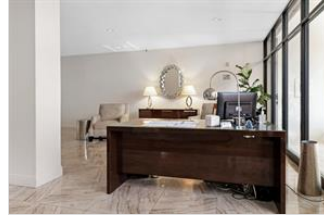
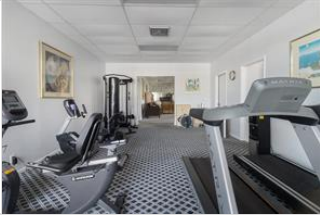
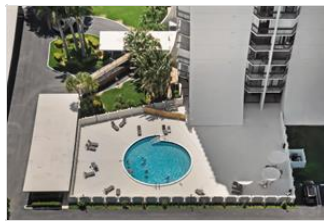
<b>Taxes:</b> \$3,079/2023	<b>Tax Info:</b>	<b>Assumable:</b> No
<b>Terms:</b> Cash, Conventional		<b>Mbr Req/Fee:</b> No
<b>Type Assoc:</b> /\$839/Monthly		

Photos

MLS #: R10998061

List Price: \$224,000





*The Information is deemed to be reliable, but is not guaranteed. ©2024 Beaches MLS, Inc. Listing information is provided for consumer personal, non-commercial use, solely to identify potential properties for potential purchase; all other use is strictly prohibited and may violate relevant federal and state law. **Accessibility Issues?** We are committed to providing an accessible website. If you have difficulty accessing content or notice any accessibility problems, please contact our ADA hotline at **844-209-0134** and we will strive to provide the information you need in the format you require.*