



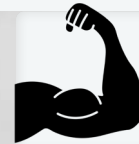
6" COMPACT HARDTAIL VISE



**Lighter Weight &
More Compact**



60,000 PSI
Ductile Cast Iron



10,000 LBS of
Pressure



FB-CT601-6



Hardtail High Pressure Vise

THE BEST PRODUCTION VISE IN THE WORLD

6.5" Jaw Hardtail

F5-HTV614

5" Jaw Hardtail

F5-HTV510



20,000 LBS
of Pressure

15,000 LBS
of Pressure



V Jaw - Single

- For 5" Vise
F5-HTJ504C
- For 6.5" Vise
F5-HTJ640



Outer V - Single

- For 5" Vise
F5-HTJ504S
- For 6.5" Vise
F5-HTJ641



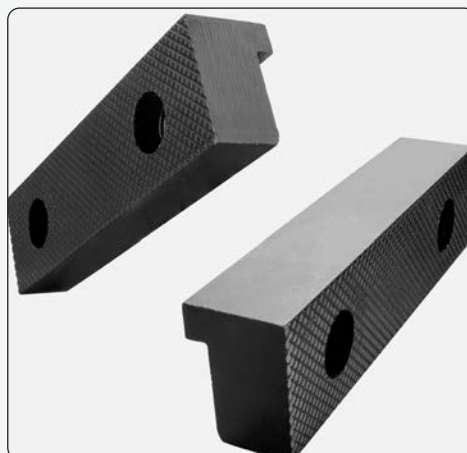
V Jaw - Single

- For 5" Vise
F5-HTJ505
- For 6.5" Vise
F5-HTJ650



Smooth Soft AL Jaws - Pairs

- For 5" Vise
F5-HTJ503-2BDK
- For 6.5" Vise
F5-HTJ630-2BDK



Serrated Hard FE Jaws - Pairs

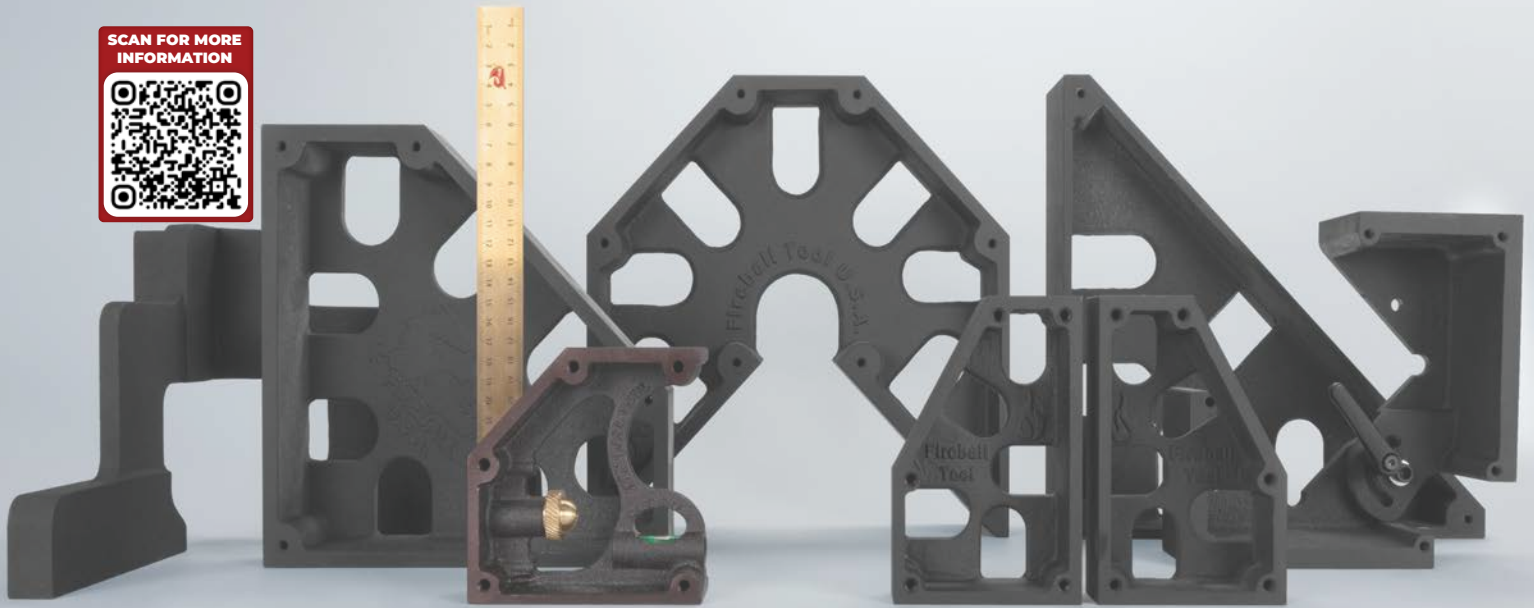
- For 5" Vise
F5-HTJ501-2BDK
- For 6.5" Vise
F5-HTJ610-2BDK



Smooth Hard FE Jaws- Pairs

- For 5" Vise
F5-HTJ502-2BDK
- For 6.5" Vise
F5-HTJ620-2BDK

SCAN FOR MORE
INFORMATION

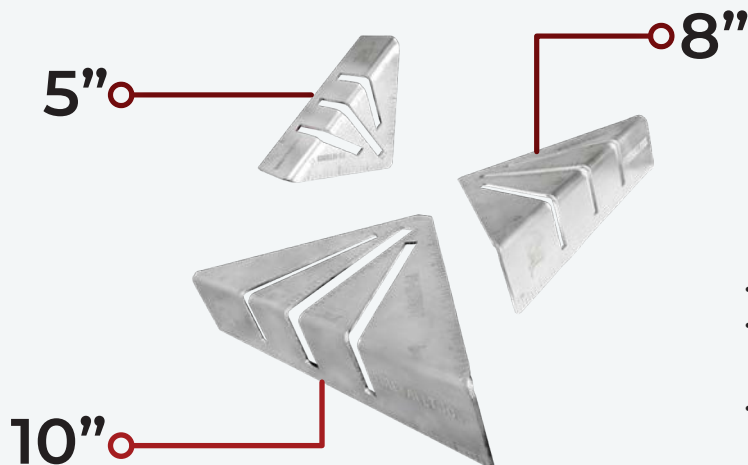


SQUARES

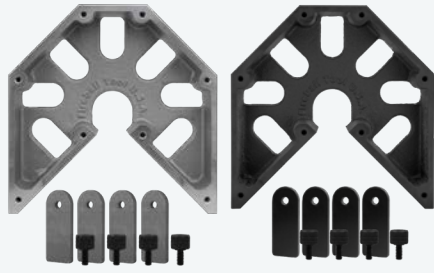
New Product Release

Miter Square- 3pk

F5-MTS130-K

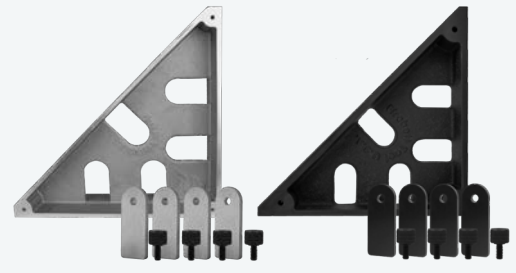


- Quickly mark at 90°, 45° and 22.5°
- Made for durable 13-gauge (0.090") stainless steel
- Dual-sided laser engraving with 1/8" increments for inside or outside measurements



Mega Square

	4"	6"	8"
AL	Weight: 1.1 lb F5-MES004-AL-PPK	Weight: 1.7 lb F5-MES006-AL-PPK	Weight: 2.5 lb F5-MES008-AL-PPK
FE	Weight: 2.5 lb F5-MES004-FE-BO-PPK	Weight: 4.0 lb F5-MES006-FE-BO-PPK	Weight: 6.1 lb F5-MES008-FE-DS-PPK
	10"	12"	20"
AL	Not Available	Weight: 7.5 lb F5-MES012-AL-PPK	Not Available
FE	Weight: 11.1 lb F5-MES010-FE-DS-PPK	Weight: 22.6 lb F5-MES012-FE-DS-PPK	Weight: 52.2 lb F5-MES020-FE-DS-BDK



Monster Square

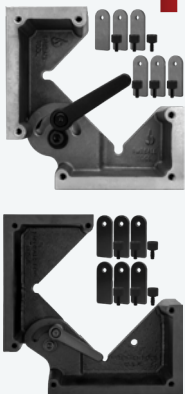
	4"	6"
AL	Weight: 1 lb F5-MOS004-AL-PPK	Weight: 1.5 lb F5-MOS006-AL-PPK
FE	Weight: 1.5 lb F5-MOS004-FE-BO-PPK	Weight: 3.5 lb F5-MOS006-FE-BO-PPK
	8"	12"
AL	Weight: 2.3 lb F5-MOS008-AL-PPK	Weight: 6.2 lb F5-MOS012-AL-PPK
FE	Weight: 6.2 lb F5-MOS008-FE-DS-PPK	Weight: 16.2 lb F5-MOS012-FE-DS-PPK



Mutant Square

	8"	10"	12"	20"
AL	Weight: 2.0 lb F5-MUS008-AL-PPK	Weight: 4.0 lb F5-MUS010-AL-PPK	Weight: 6.0 lb F5-MUS012-AL-PPK	Weight: 27.6 lb F5-MUS020-AL-BDK
FE	Weight: 6.7 lb F5-MUS008-FE-DS-PPK	Weight: 12 lb F5-MUS010-FE-DS-PPK	Weight: 18.0 lb F5-MUS012-FE-DS-PPK	Weight: 71.4 lb F5-MUS020-FE-DS-BDK

Magic Square



	8"	12"
AL	Weight: 2.0 lb F5-MAS008-AL-PPK	Weight: 4.0 lb F5-MAS012-AL-PPK
FE	Weight: 4.0 lb F5-MAS008-FE-BO-PPK	Weight: 11.0 lb F5-MAS012-FE-DS-PPK

Minion Square

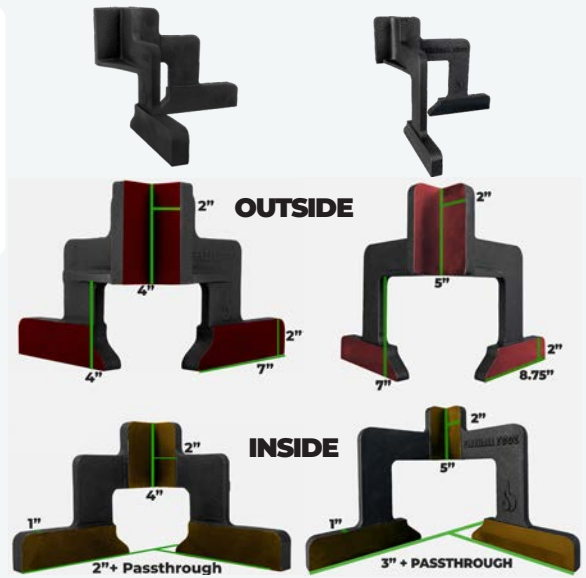


	6"
AL	Weight: 4.0 lb F5-GTS006-AL-LRK
FE	Weight: 6.7 lb F5-GTS006-FE-BO-LRK

3-Axis Square

Available in Large and Extra Large

L	Square Only	Include 5/8" pins	Include 16mm pins
	F5-TAS100-FE	F5-TAS100-TSP100-BDK	F5-TAS100-TASPINFA16-BDK
XL	F5-TAS120-FE	F5-TAS120-TSP100-BDK	F5-TAS120-TASPINFA16-BDK
	Include 3/4" pins	Include 28mm pins	
L	F5-TAS100-TASPINFA75-BDK	F5-TAS100-TASPINFA28-BDK	
XL	F5-TAS120-TASPINFA75-BDK	F5-TAS120-TASPINFA28-BDK	



Combination Square



F2R 24"	
F2R 600MM	
F2R 18"	
F2R 450MM	
F2R 12"	
F2R 300MM	

AL	FE
F5-CSQ-AL-024-F2R-BDK	F5-CSQ-FE-024-F2R-BDK
F5-CSQ-AL-600-F2R-BDK	F5-CSQ-FE-600-F2R-BDK
F5-CSQ-AL-018-F2R-BDK	F5-CSQ-FE-018-F2R-BDK
F5-CSQ-AL-450-F2R-BDK	F5-CSQ-FE-450-F2R-BDK
F5-CSQ-AL-012-F2R-BDK	F5-CSQ-FE-012-F2R-BDK
F5-CSQ-AL-300-F2R-BDK	F5-CSQ-FE-300-F2R-BDK

1826 Combination Square



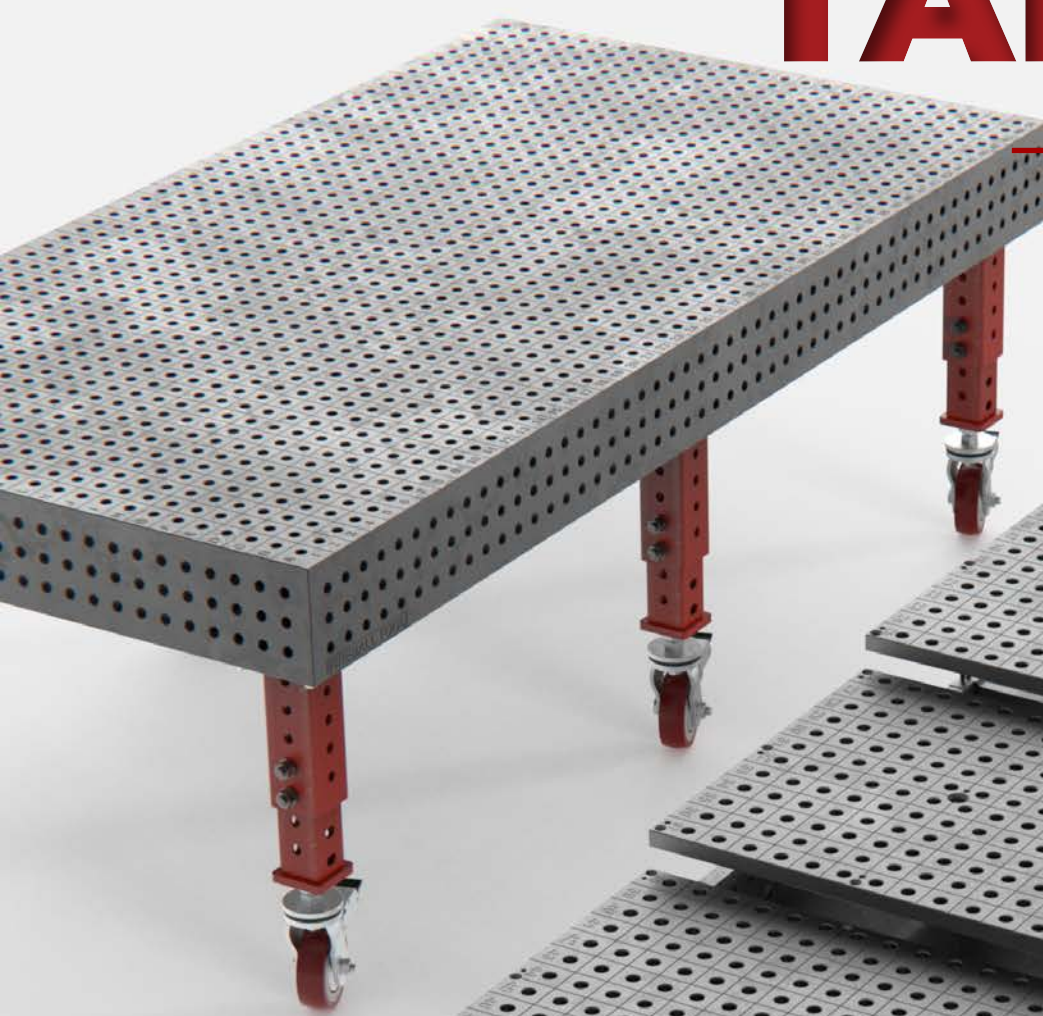
F2R 24"	
F2R 18"	
F2R 12"	

1" Square	3" Square
F5-CSQ1826-BR24-BDK	F5-CSQ3827-BR24-BDK
F5-CSQ1826-BR18-BDK	F5-CSQ3827-BR18-BDK
F5-CSQ1826-BR12-BDK	F5-CSQ3827-BR12-BDK

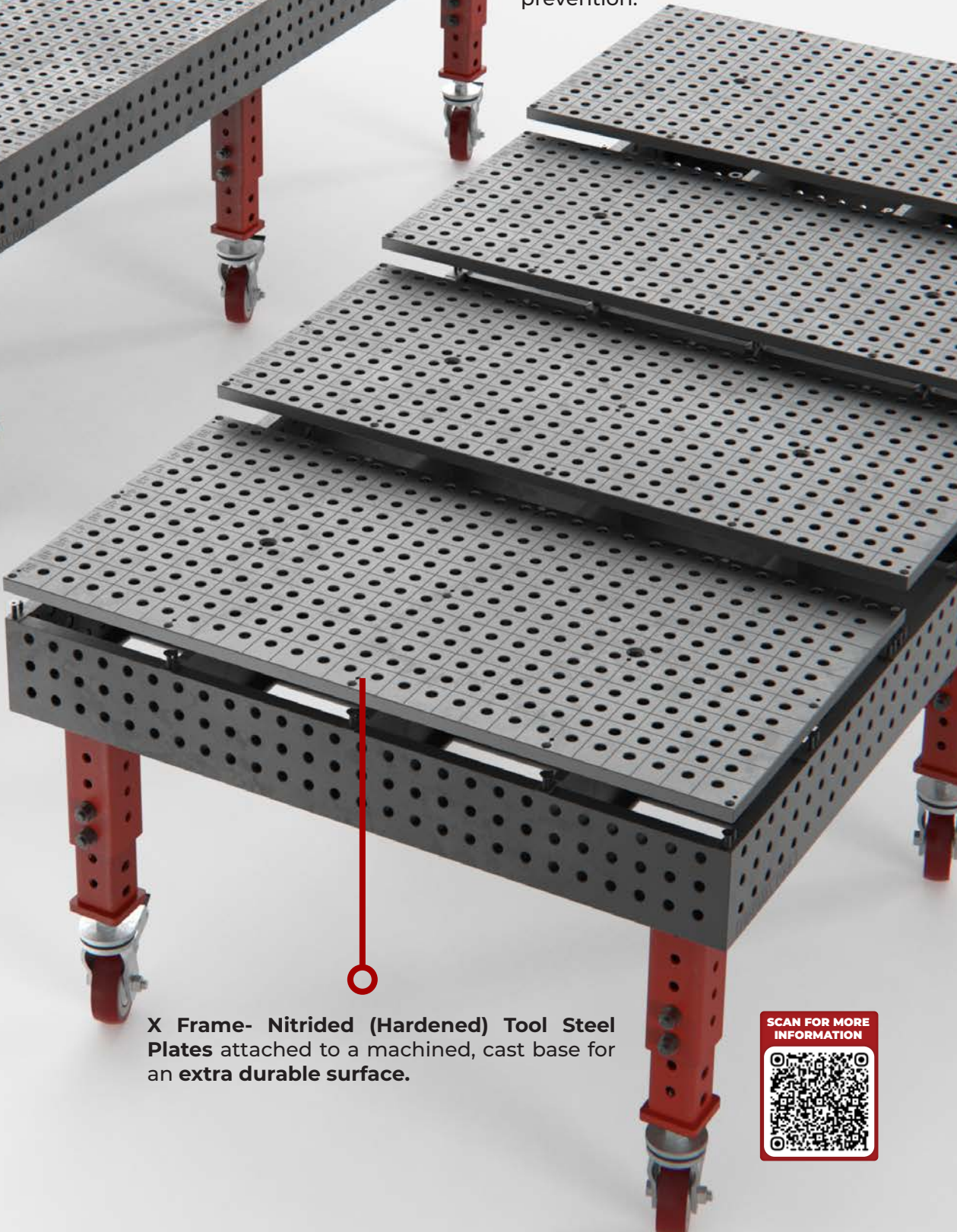


Prices are subject to change

TABLES



Single Piece Cast construction for precision and rigidity **combined with Dragon Scale Finish** for corrosion protection and spatter prevention.

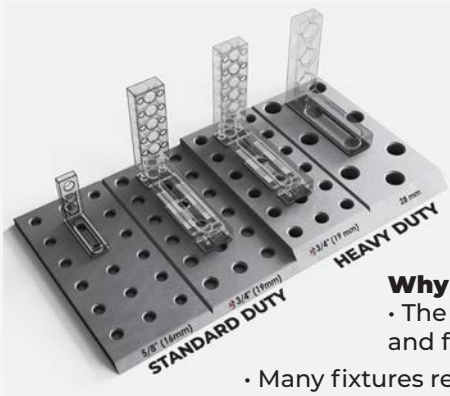


X Frame- Nitrided (Hardened) Tool Steel Plates attached to a machined, cast base for an **extra durable surface**.

SCAN FOR MORE
INFORMATION



Your Complete Guide to Our Special System and Legs

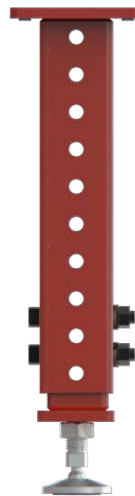
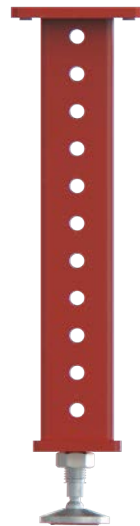
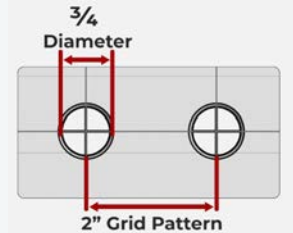


Why 3/4" Hole System

- 45% larger cross section compared to 5/8" and 16mm holes means **strong bolts, stronger clamp.**
- Largest hole size while still having a **2" grid pattern** on the table and **1" hole pattern** on fixtures.

Why 2" Grid Pattern

- The 2" grid pattern is **the ideal hole density** to get clamps and fixtures where you need them.
- Many fixtures require 2 bolts to properly align them. Having a **2" grid pattern allows shorter, more compact fixtures** compared to 4" hole spacing. This is even more important when fixtures have slots to bridge the gap to the next hole, and is the difference between a 4" on a 2" grid, vs an 8" slot on a 4" grid.



STANDARD LEGS

HEIGHT ADJUSTABLE LEVEL PAD

HEIGHT ADJUSTABLE CASTER

HEIGHT ADJUSTABLE LEVEL PAD

HEIGHT ADJUSTABLE CASTER

LEG HEIGHT

26"

24" ~ 38"

22" ~ 30"

21" ~ 31"

26" ~ 36"

LEVELING PAD

+/- 1"

+/- 1"

+/- 1"

+/- 1"

+/- 1"

WEIGHT

30.8 lb

40.7 lb

36.3 lb

28.9 lb

32.5 lb

STATIC LOAD CAPACITY

2000 lb

2000 lb

1700 lb

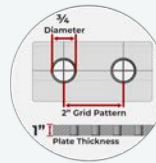
1200 lb

750 lb



Prices are subject to change

X FRAME- TOOL STEEL TOP SERIES



Feature a rigid cast iron base with a nitrided, 1" thick tool steel plate on the top surface for added wear resistance.

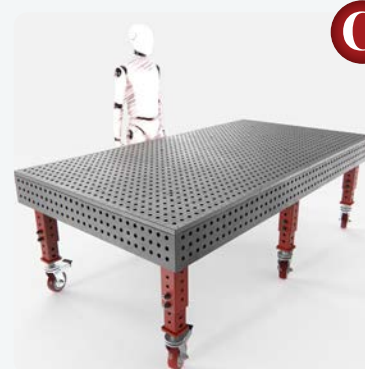
TABLE SIZES (L x W x H)	NO LEGS (TABLETOP ONLY)	STANDARD LEGS	HEIGHT ADJUSTABLE LEVEL PAD	HEIGHT ADJUSTABLE CASTER
A 156" x 78" x 8"	FA75-TCX15678-X2	FA75-TCX15678-X2-A1	FA75-TCX15678-X2-B1	FA75-TCX15678-X2-C1
B 122" x 60" x 8"	FA75-TCX12260-X3	FA75-TCX12260-X3-A1	FA75-TCX12260-X3-B1	FA75-TCX12260-X3-C1
C 102" x 54" x 8"	FA75-TCX10254-X2	FA75-TCX10254-X2-A1	FA75-TCX10254-X2-B1	FA75-TCX10254-X2-C1
D 78" x 78" x 8"	FA75-TCX7878-X2	FA75-TCX7878-X2-A1	FA75-TCX7878-X2-B1	FA75-TCX7878-X2-C1
E 78" x 54" x 8"	FA75-TCX7854-X2	FA75-TCX7854-X2-A1	FA75-TCX7854-X2-B1	FA75-TCX7854-X2-C1
F 54" x 54" x 8"	FA75-TCX5454-X2	FA75-TCX5454-X2-A1	FA75-TCX5454-X2-B1	FA75-TCX5454-X2-C1



Steel Top Welding Table
(156" x 78")



Steel Top Welding Table
(122" x 60")



Steel Top Welding Table
(102" x 54")



Steel Top Welding Table
(78" x 78")

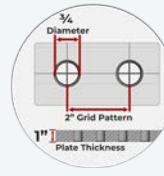


Steel Top Welding Table
(78" x 54")



Steel Top Welding Table
(54" x 54")

HEAVY DUTY SERIES



Feature single piece, cast iron construction for **best rigidity and flatness with 1" thick top and sides.**

TABLE SIZES (L x W x H)	STANDARD LEGS	HEIGHT ADJUSTABLE LEVEL PAD	HEIGHT ADJUSTABLE CASTER
G 168" x 30" x 8"	FA75-TCG16830-A1	FA75-TCG16830-B1	FA75-TCG16830-C1
H 156" x 78" x 8"	FA75-TCG15678-A1	FA75-TCG15678-B1	FA75-TCG15678-C1
I 102" x 54" x 8"	FA75-TCG102-G2-A1	FA75-TCG102-G2-B1	FA75-TCG102-G2-C1
J 78" x 78" x 8"	FA75-TCG7878-A1	FA75-TCG7878-B1	FA75-TCG7878-C1
K 78" x 54" x 8"	FA75-TCG7854-A1	FA75-TCG7854-B1	FA75-TCG7854-C1
L 54" x 54" x 8"	FA75-TCG5454-A1	FA75-TCG5454-B1	FA75-TCG5454-C1
M 54" x 30" x 8"	FA75-TCG5430-A1	FA75-TCG5430-B1	FA75-TCG5430-C1



Heavy Duty Welding Table (168" x 30")



Heavy Duty Welding Table (156" x 78")



Heavy Duty Welding Table (102" x 54")



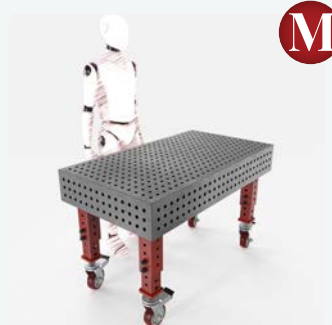
Heavy Duty Welding Table (78" x 78")



Heavy Duty Welding Table (78" x 54")



Heavy Duty Welding Table (54" x 54")

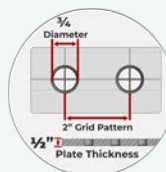


Heavy Duty Welding Table (54" x 30")



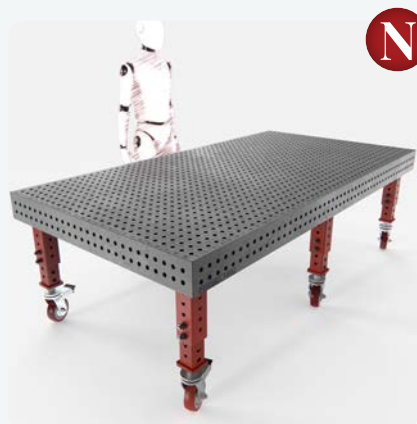
Prices are subject to change

STANDARD DUTY SERIES



Same construction method as heavy duty series, but with 1/2" thick top and sides.

TABLE SIZES (L x W x H)	STANDARD LEGS	HEIGHT ADJUSTABLE LEVEL PAD	HEIGHT ADJUSTABLE CASTER
N 102" x 54" x 6"	FA75-TCF10254-F2-A1	FA75-TCF10254-F2-B1	FA75-TCF10254-F2-C1
O 78" x 54" x 6"	FA75-TCF7854-F2-A1	FA75-TCF7854-F2-B1	FA75-TCF7854-F2-C1
P 54" x 54" x 6"	FA75-TCF5454-F2-A1	FA75-TCF5454-F2-B1	FA75-TCF5454-F2-C1



Standard Duty Welding Table (102" x 54")

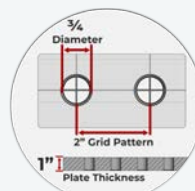
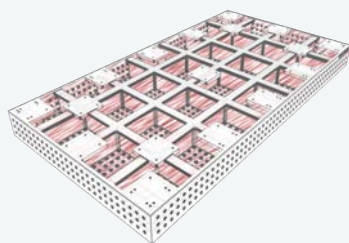


Standard Duty Welding Table (78" x 54")



Standard Duty Welding Table (54" x 54")

SUPER HEAVY DUTY



Super Heavy Duty Welding Table (102" x 54" x 8")

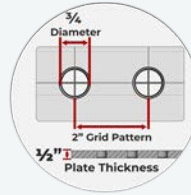
NO LEGS (TABLETOP ONLY)	STANDARD LEGS	HEIGHT ADJUSTABLE LEVEL PAD	HEIGHT ADJUSTABLE CASTER
F5-TCG10254HD-FE-DS	F5-TCG10254HD-FE-DS-A1	F5-TCG10254HD-FE-DS-B1	F5-TCG10254HD-FE-DS-C1

DRAGON WAGON SERIES



Dragon Wagon
(54" x 30")

Ultimate work station solution that keeps everything organized.

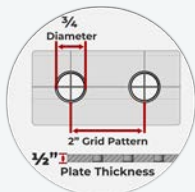


Dragon Wagon
(36" x 24")

TABLE SIZES (L x W x H)	NO LEGS (TABLETOP ONLY)	HEIGHT ADJUSTABLE LEVEL PAD	HEIGHT ADJUSTABLE CASTER
54" x 30" x 4"	FA75-TCH5430-H2	FA75-TCH5430-KA200	FA75-TCH5430-KC300
36" x 24" x 4"	FA75-TCH3624-H2	FA75-TCH3624-KA400	FA75-TCH3624-KC600

PRO TABLE KIT SERIES

Plates and tables designed for end users to **customize and assemble**. Join multiple plates together to suit your needs.



Pro Table Kit
(72" x 36" x 1/2")

FA75-PDY7236-BDK3



Pro Table Kit
(54" x 54" x 1/2")

FA75-PDY5454-BDK3



The Marauder 2' x 1.7'
(24" x 20" x 1/2")

FA75-PDY2420-BDK3



Pro Table Kit
(54" x 30" x 1/2")

FA75-PDY5430-BDK3



Pro Table Kit
(36" x 36" x 1/2")

FA75-PDY3636-BDK3



Pro Table Kit
(36" x 24" x 1/2")

FA75-PDY3624-BDK3



Prices are subject to change

FIXTURE BLOCKS



Extension Block 3"

FA75-MBV302-BDK



Extension Block 6"

FA75-MBV605-A1-BDK



Extension Block 13"

FA75-MBV130-A1-BDK



3.5 x 4 Riser Block

FA75-MBV404-BDK



13 x 4 Riser Block

FA75-MBV134-BDK



5" Adjustable Fence Block

FA75-SBS525-K3



Stepped Fence Block (6" x 2" x 1")

FA75-MBH612-A1-BDK



Fence Pin Blocks (4" x 1" x 1")

FA75-SBS410-BDK



Fence Block (4" x 1" x 2")

FA75-SBS420-BDK



Fence Pin Blocks (6" x 1" x 2")

FA75-SBS620-BDK



Fence Block (4" x 1" x 2")

FA75-SBS420-AR-BDK



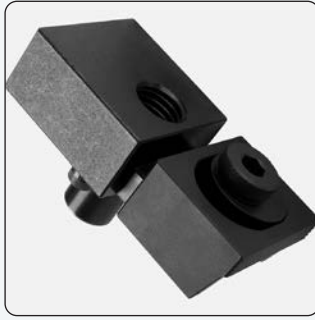
Fence Pin Blocks (6" x 1" x 2")

FA75-SBS620-AR-BDK



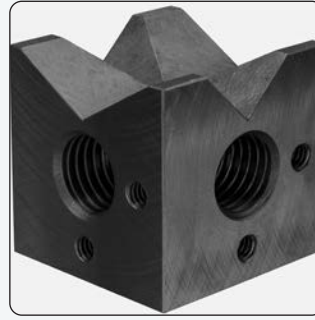
V Block XL (Pair)

FA5-VXL008-BDK3



Low Profile Push Block

FA75-LPC103-BDK



V Block 2" x 2"

FA75-VBK100-A1-BDK



V Block 2" x 2"

FA75-VBK100-AR-BDK



6" Threaded Twist Block 2x2

FA75-MBH644-BDK



6" Smooth Twist Block 2x2

FA75-MBH644-S-BDK



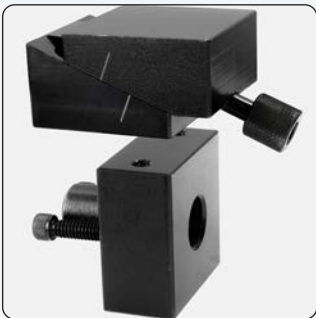
6" Threaded Twist Block 4x1

FA75-MBH641-BDK



6" Smooth Twist Block 4x1

FA75-SBH641-S-BDK



Wedge Block

FA75-WFB413-BDK



Tooth Block 5" Mini

FA75-TBM521-BDK



Tooth Block Kit

FA75-TBM821-A1-BDK



Tooth Block Kit

FA75-TBM821-AL-AR-BDK1



Post Pin 1" x 2"

FA75-SBS120-4BDK



Post Pin 1" x 2"

FA75-SBS120-AR-4BDK



Prices are subject to change

TABLE FIXTURES KITS



FA75-KIT-FSK10



FA75-KIT-FSK20



FA75-KIT-M301



FA75-KIT101-BDK



FA75-KIT201-BDK



FA75-KIT301-BDK



FA75-KIT401-BDK



FA75-KIT501-BDK

SPACERS & SHIMS



Magnetic 1-2-3 Blocks



**2
PACK**

F5-MSB123-2PPK



**8
PACK
+
CASE**

F5-MSB123-8PPK

Shim Set



12pc SET

F5-MSHK350-PPK

Magnetic Shim Kits

40pc KIT

Height (in)	Tolerance +/-0.0009
3/16" (.1875)	x4
1/4" (.250)	x4
3/8" (.375)	x4
1/2" (.500)	x4
3/4" (.750)	x4
1" (1.00)	x4
2" (2.00)	x4

Height (in)	Tolerance + 0.0035 / - 0.0015
1/32" (.03125)	x4
1/16" (.0625)	x4
1/8" (.125)	x4

F5-MSHK300-PPK

52pc KIT

Height (in)	Tolerance +/-0.0009
3/16" (.1875)	x4
7/32" (.218)	x4
1/4" (.250)	x4
3/8" (.375)	x4
1/2" (.500)	x4
5/8" (.625)	x4
3/4" (.750)	x4
7/8" (.875)	x4
1" (1.00)	x4
2" (2.00)	x4

Height (in)	Tolerance + 0.0035 / - 0.0015
1/32" (.03125)	x4
1/16" (.0625)	x4
1/8" (.125)	x4

F5-MSHK305-PPK

96pc KIT

Height (in)	Tolerance +/-0.0009
3/16" (.1875)	x8
7/32" (.218)	x8
1/4" (.250)	x8
3/8" (.375)	x8
1/2" (.500)	x8
5/8" (.625)	x8
3/4" (.750)	x8
7/8" (.875)	x8
1" (1.00)	x8

Height (in)	Tolerance + 0.0035 / - 0.0015
1/32" (.03125)	x8
1/16" (.0625)	x8
1/8" (.125)	x8

F5-MSHK325-PPK



Prices are subject to change

CLAMPS & PLIERS



**Lumber Maximus Clamp
2" x 4" (Single Clamp Set)**

F5-MCL204



**Maximus Bar and Dog Clamp
(2 Sets of Clamps)**

F5-BCL2211-2PPK



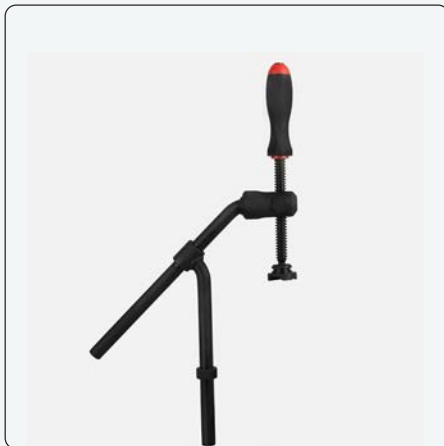
**Mini Maximus Bar & Dog
Clamp Kit**

F5-BCL1005-2PPK



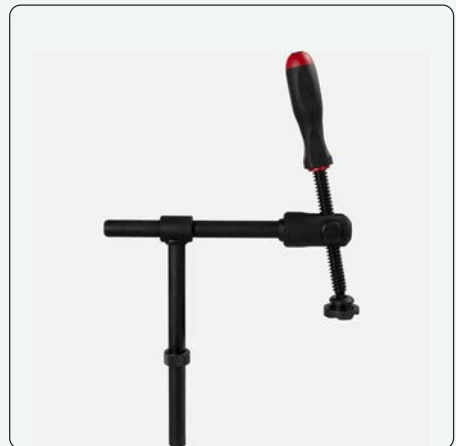
Double Dragon Clamp

FA75-BDC144



Double Gooseneck Clamp

FA75-BPC450



Double 90 Gooseneck Clamp

FA75-CLP614



8" Mantis Grip Pliers

F5-PFB008



11" Mantis Grip Pliers

F5-PFB011



Curved Jaw Locking Plier

FB-312LJP

HAND TOOLS



AL Hex Key Tower - Inch

FB-HKH-K82-BDK



AL Hex Key Tower - Metric

FB-HKH-K83-BDK



AL Hex Key Holder Low Profile - Inch

FB-HKH101-IN-BDK



AL Hex Key Holder Low Profile - Metric

FB-HKH101-MM-BDK



Magnetic Torx Key Tower

FB-HKH-TX07-K75



Magnetic Torx Key Low Profile

FB-HKH-TX02-K25



Dual Hex Key Holder Set

FB-HKH-K35-BDK



Fireball Scraper

F5-SCP112-FE-PPK



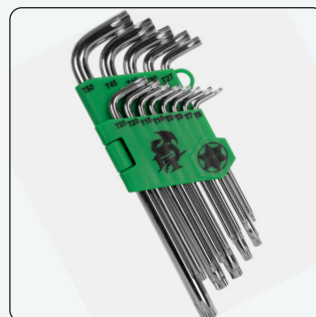
Inch Hex Keys

FB-HKS-IN13-C



Metric Hex Keys

FB-HKS-MM09-C



Star Keys

FB-TKS-TX13-C



Prices are subject to change

FIREBALL APPAREL



Fireball Original Shirt



8 Amp Champ T-shirt



Fireball Phoenix T-shirt



Flame Logo T-shirt



The Slayer T-shirt



Fireball Black Curved Bill Hat



Fireball Red Curved Bill Hat



Fireball Black Snapback Hat



Fireball Red Snapback Hat

Visit us online at:
www.FireballTool.com

Customer Service
Phone: 509-904-1447
contact@fireballtool.com

