

HIGH PERFORMANCE INDUSTRIAL MIG WELDING TORCHES

Utilizing our patented and proven consumable design, **PowerBall® High Performance MIG Guns** are engineered to provide maximum conductivity with **increased consumable life**. The revolutionary design provides a higher amperage output than traditional air-cooled MIG welding guns, resulting in a lighter weight, energy efficient torch that can take on the toughest welding applications while reducing operating costs. Higher conductivity and energy efficiency also means less heat build-up in the gun, keeping your hands cool and reducing spatter build-up on the contact tip and nozzle.

A NEW STANDARD FOR GMAW PERFORMANCE!

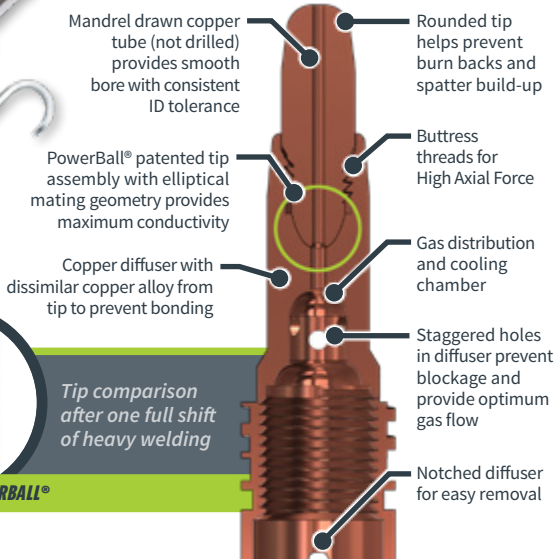
- ▶ **Long-life contact tips, torch liners and nozzles** reduce consumable costs
- ▶ **100% duty cycle** (with mixed gas) — performance that rivals liquid-cooled MIG guns!
- ▶ **Fully repairable gun** for increased service life and reduced long-term ownership costs
- ▶ Innovative power cable design optimizes conductivity with all-copper current path
- ▶ Optimized tip geometry and reduced heat **prevents spatter build-up and burn backs**
- ▶ Ergonomic, durable handle and adjustable trigger with comfort grip
- ▶ Available in 300, 400 and 500 A models



POWERBALL® MIG GUN FEATURES

300 A, 400 A & 500 A MIG guns available with options for ferrous and non-ferrous wires

POWERBALL® CONSUMABLES DESIGN



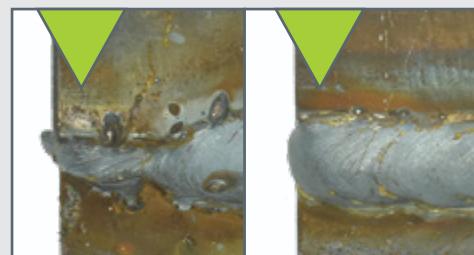
Tip comparison after one full shift of heavy welding

PREVIOUS TIP POWERBALL®



FASTER & SMOOTHER ARC STABILIZATION

Improved conductivity in the PowerBall® torch reduces the Arc Stabilization Period (ASP). Faster arc starts improve weld quality, with the start of the weld as good as the end.



BAD ARC STABILIZATION PERIOD

GOOD ARC STABILIZATION PERIOD

POWERBALL® MIG GUN FEATURES

THREE NECK LENGTHS IN 45° OR 60° ANGLES
PROVIDES FLEXIBILITY BASED
ON WELDING APPLICATION

**ERGONOMIC DESIGN
WITH OVERMOLDED HANDLE**
WITH RUBBERIZED GRIP FOR
OPERATOR COMFORT & CONTROL

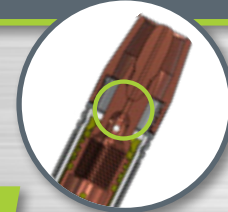


**AIR COOLED MIG TORCH WITH
100% DUTY CYCLE!**

(with 300 A, 400 A, or 500 A MIG
Guns using 90/10 mixed gas)

ADJUSTABLE TRIGGER PULL
FOR ENHANCED CONTROL BASED
ON OPERATOR OR APPLICATION

**POWERBALL® LONG-LIFE
CONTACT TIPS**
REDUCE CONSUMABLE
COSTS & DOWNTIME



**ALL BUTTER,
NO POPCORN!™**

INTERNAL & REAR CONNECTION FEATURES

ALL-COPPER CURRENT PATH
MAXIMIZES CONDUCTIVITY &
PROVIDES SUPERIOR COOLING

**TORCH CABLE WITH ULTRASONICALLY
WELDED CONNECTIONS AT EACH END**
FOR REDUCED ELECTRICAL RESISTANCE &
EXTENDED CABLE LIFE

SPARE TRIGGER WIRES
FOR EASY REPAIR IN CASE
OF CABLE DAMAGE

**ELLIPTICAL WIRE
TORCH LINER**
PATENTED DESIGN PROVIDES
LONGER SERVICE LIFE &
ELIMINATES WIRE FRICTION



STRAIN RELIEFS
AT EACH END REDUCE
CABLE FATIGUE

POWERBALL® POWER CABLE
IMPROVES CONDUCTIVITY



ULTRASONICALLY WELDED COPPER POWERBALL® LUG
PATENTED DESIGN ELIMINATES ELECTRICAL
RESISTANCE AT THE FEEDER