



# SOUTHWIRE® CABLE PROTECTION

Vehicle and pedestrian traffic can seriously damage electrical cables. This can result in costly repairs and downtime. Loose electrical cables not only represent an obvious trip hazard, but damaged cables can also create a shock hazard.

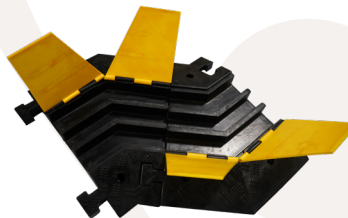
Assure your temporary electrical cable runs with ShockShield® Cable Protection Systems. Perfect for any application where cables are in harms way. Connect multiple pieces to adapt the protection to your specific environment. Eliminate downtime, costly repairs and jobsite liability.

## FEATURES & BENEFITS

- Non-slip molded pattern
- Heavy Duty materials hold up to rugged conditions
- Black rubber base and Safety Yellow hinged EVA channel covers
- Non-conductive and resists oils and solvents
- Modular design allows virtually any configuration
- Robust interlocking connectors
- Load bearing capacity to 80,000 lbs or 21,000 lbs per axle.
- Handle is integrated into the linear pieces for portability
- Stake/Nail through holes in base pieces allows for more stable installation



3 Channel Linear  
31205-1



3 Channel Right & Left  
31206-1, 31207-1



3 Channel End Cap  
31208-1

**BUILT FOR DURABILITY.  
BUILT FOR RELIABILITY.  
BUILT FOR WORK.™**

1-855-798-6657 | [SOUTHWIRETOOLS.COM](http://SOUTHWIRETOOLS.COM)

©2018 Southwire Company, LLC. All rights reserved.  
\*Registered Trademark & ™Trademark of Southwire Company, LLC.



# SOUTHWIRE® CABLE PROTECTION

## APPLICATIONS:

- Construction Sites
- Manufacturing Plants
- Film/TV Industry
- Weddings/Concerts
- Amusement Parks
- Arenas/Sporting Events
- Government Facilities
- Colleges and Universities
- Convention Centers



Part number	Description	Channel Qty	Length (in.)	Width (in.)	Height (in.)	Channel Size (H x W)	Weight (lbs)	Load Capacity / Per Axle Cap (lbs)	Base Material	Cable Lid
31200-1	Linear	5	35.4375	23.625	2.95	1.96" x 1.38"	52.9	80,000/21,000	Rubber	EVA (plastic)
31201-1	Left Turn	5	23.625	24.41	2.95	1.96" x 1.38"	24.7	80,000/21,000	Rubber	EVA (plastic)
31202-1	Right Turn	5	23.625	24.41	2.95	1.96" x 1.38"	24.7	80,000/21,000	Rubber	EVA (plastic)
31203-1	End Cap (2)	5	7.87	23.625	2.95	1.96" x 1.38"	17.7	80,000/21,000	Rubber	EVA (plastic)
31205-1	Linear	3	35.4375	23.625	2.95	1.96" x 2.09"	52.9	80,000/21,000	Rubber	EVA (plastic)
31206-1	Left Turn	3	23.625	24.41	2.95	1.96" x 2.09"	24.7	80,000/21,000	Rubber	EVA (plastic)
31207-1	Right Turn	3	23.625	24.41	2.95	1.96" x 2.09"	24.7	80,000/21,000	Rubber	EVA (plastic)
31208-1	End Cap (2)	3	7.87	23.625	2.95	1.96" x 2.09"	17.7	80,000/21,000	Rubber	EVA (plastic)

**PERFECT FOR USE WITH SOUTHWIRE TEMPORARY POWER DISTRIBUTION BOXES AND CABLES!**

**BUILT FOR DURABILITY.  
BUILT FOR RELIABILITY.  
BUILT FOR WORK.™**

**1-855-798-6657 | SOUTHWIRETOOLS.COM**

©2018 Southwire Company, LLC. All rights reserved.  
\*Registered Trademark & ™Trademark of Southwire Company, LLC.