
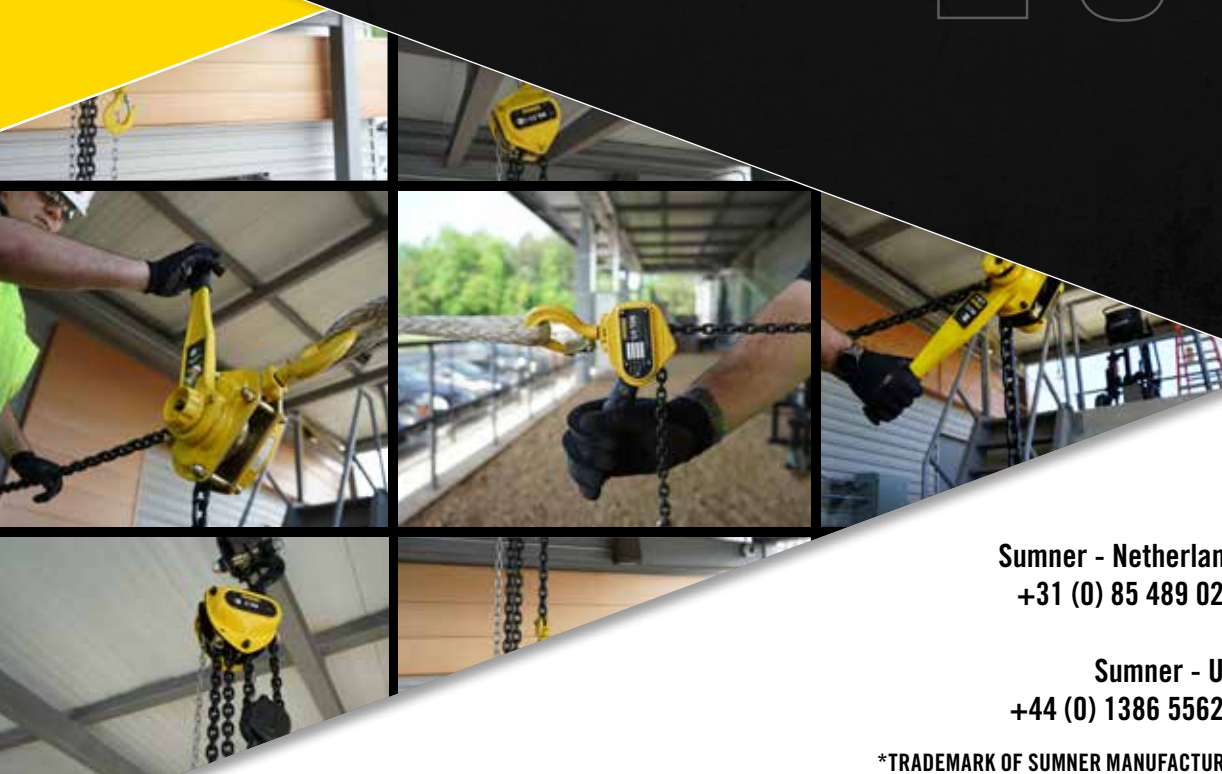




SUMNER*

 A Southwire Company

2019 HOIST CATALOG



SUMNER.COM

Sumner - Netherlands
+31 (0) 85 489 0284

SUMNER - U.S.
281-999-6900

Sumner - U.K.
+44 (0) 1386 556278

Sumner - Canada
(519) 653-5300

*TRADEMARK OF SUMNER MANUFACTURING LLC. REGISTERED IN THE U.S.

OUR STORY

Sumner, A Southwire Company, is a recognized leading manufacturer of material lifts, jack stands, welding tools, material carts and other tools and equipment for the construction market. We are a key supplier to the welding and mechanical contracting industries and have a market presence in more than 50 countries around the world. We maintain manufacturing and sales operations in Houston, Canada, China, the UK and the Netherlands.

Founded in 1965, our operations began to meet the need for good welding tools and lifting equipment to make pipe installations easier and safer. Early success in the business led the way for us to continually meet the needs of a wide variety of contractors, and we continue to provide a range of equipment options that promote safety and efficiency on the jobsite.

SUMNER MANUFACTURING

At Sumner Manufacturing, our welding customers are very important to us. One of our primary goals as a manufacturer is to provide our customers with high quality, competitively priced tools. Contractors are not only our customers, we learn from contractors in the field what products are needed to make their jobs easier. These ideas help us to design and build new and better products. In essence, our customers are part of our Research & Development department, and without their input, we would be unable to continually offer great new products.

Another important part of our philosophy at Sumner is our commitment to safety. All Sumner employees are dedicated to the safety of the individuals who use our products. We understand that price is always a concern to our users, but we will never sacrifice quality or safety just to save costs. We know the demands expected of all Sumner products, and each is built for years of use. It could be said that Sumner tools are built the way the contractor would make them. As a result, our tools are not only considered the best in the market, but also the most reliable to get the job done efficiently and safely.

TABLE OF CONTENTS

LEVER HOISTS

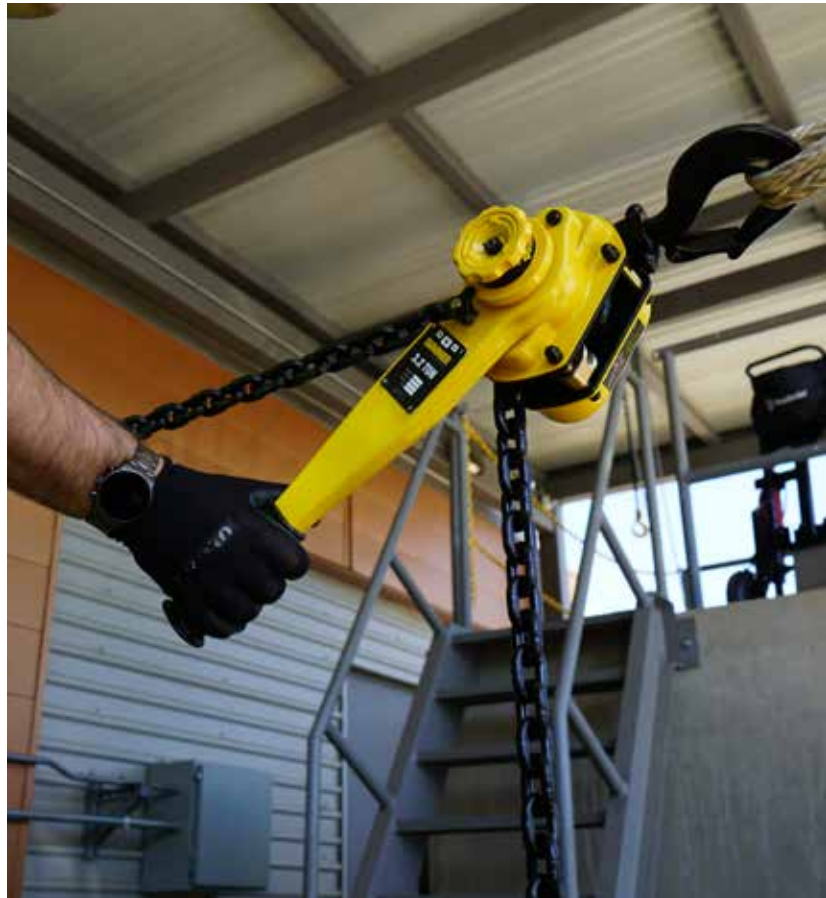
1- 6 Ton Lever Hoists	5
0.8 - 9 Ton Premium Lever Hoists	6
0.8 - 9 Ton Premium Lever Hoists w/ Overload Protection	7

CHAIN BLOCK

1/2 - 10 Ton Chain Block Hoists.....	8
1/4 - 20 Ton Premium Chain Block Hoists.....	9
1-20 Ton Premium Chain Block Hoists w/ Overload Protection.....	11

HOISTS

Sumner's new line of Hoists offer an innovative, heavy-duty, manual design to tackle your toughest lifts up to 20 tons! This new line of Lever and Chain Block Hoists also offers a premium option that includes a single fused brake design and zinc phosphate load chain for superior corrosion resistance. Each hoist also comes with an easily removable top hook and hard-steel load sheave rollers. All of Sumner's Hoists meet ANSI/ASME, OSHA and CE Hoisting Standards with our premium models being serviceable for your safety.



LEVER HOIST



Sumner's Lever Hoists arm you with the strength you need to lift, move and hold heavy materials on a jobsite or in a work shop! Sumner Lever Hoists all come with a steel construction and 360° ratchet with short strokes. Available in 1/4 to 6 ton lifting weight capacities.

- Meet all ANSI/ASME, OSHA and CE Hoisting Standards
- Top Hook is easily removable
- Hard Steel Load Sheave Rollers
- 1.5x Safety Tested

SPECIFICATIONS

ITEM #	STOCK #	DESCRIPTION	LIFTING WEIGHT CAPACITY
787536	LH025C05	1/4 Ton Lever Hoist with 5 ft. Chain Fall	1/4 TON
787537	LH025C10	1/4 Ton Lever Hoist with 10 ft. Chain Fall	1/4 TON
787538	LH025C15	1/4 Ton Lever Hoist with 15 ft. Chain Fall	1/4 TON
787539	LH050C05	1/2 Ton Lever Hoist with 5 ft. Chain Fall	1/2 TON
787540	LH050C10	1/2 Ton Lever Hoist with 10 ft. Chain Fall	1/2 TON
787541	LH050C15	1/2 Ton Lever Hoist with 15 ft. Chain Fall	1/2 TON
787542	LH075C05	3/4 Ton Lever Hoist with 5 ft. Chain Fall	3/4 TON
787543	LH075C10	3/4 Ton Lever Hoist with 10 ft. Chain Fall	3/4 TON
787544	LH075C15	3/4 Ton Lever Hoist with 15 ft. Chain Fall	3/4 TON
787545	LH075C20	3/4 Ton Lever Hoist with 20 ft. Chain Fall	3/4 TON
787546	LH150C05	1-1/2 Ton Lever Hoist with 5 ft. Chain Fall	1-1/2 TON
787547	LH150C10	1-1/2 Ton Lever Hoist with 10 ft. Chain Fall	1-1/2 TON
787548	LH150C15	1-1/2 Ton Lever Hoist with 15 ft. Chain Fall	1-1/2 TON
787549	LH150C20	1-1/2 Ton Lever Hoist with 20 ft. Chain Fall	1-1/2 TON
787550	LH300C05	3 Ton Lever Hoist with 5 ft. Chain Fall	3 TON
787551	LH300C10	3 Ton Lever Hoist with 10 ft. Chain Fall	3 TON
787552	LH300C15	3 Ton Lever Hoist with 15 ft. Chain Fall	3 TON
787553	LH300C20	3 Ton Lever Hoist with 20 ft. Chain Fall	3 TON
787554	LH600C05	6 Ton Lever Hoist with 5 ft. Chain Fall	6 TON
787555	LH600C10	6 Ton Lever Hoist with 10 ft. Chain Fall	6 TON
787556	LH600C15	6 Ton Lever Hoist with 15 ft. Chain Fall	6 TON
787557	LH600C20	6 Ton Lever Hoist with 20 ft. Chain Fall	6 TON

LEVER HOISTS

PREMIUM LEVER HOISTS



Sumner's Premium Lever Hoists offer an innovative and heavy-duty design to tackle your toughest lifts of various sizes! Our premium lever hoists include a single fused brake design and zinc phosphate load chain for superior corrosion resistance. Available in .8 to 9 ton lifting weight capacities.

- No Preload Required
- Meet all ANSI/ASME, OSHA and CE Hoisting Standards
- Top Hook is easily removable
- Hard Steel Load Sheave Rollers
- 1.5x Safety Tested
- Unique zinc phosphate chain design

SPECIFICATIONS

ITEM #	STOCK #	DESCRIPTION	LIFTING WEIGHT CAPACITY
787480	PLH080C05	.8 Ton Lever Hoist with 5 ft. Chain Fall	.8 TON
787481	PLH080C10	.8 Ton Lever Hoist with 10 ft. Chain Fall	.8 TON
787482	PLH080C15	.8 Ton Lever Hoist with 15 ft. Chain Fall	.8 TON
787483	PLH080C20	.8 Ton Lever Hoist with 20 ft. Chain Fall	1 TON
787484	PLH100C05	1 Ton Lever Hoist with 5 ft. Chain Fall	1 TON
787485	PLH100C10	1 Ton Lever Hoist with 10 ft. Chain Fall	1 TON
787486	PLH100C15	1 Ton Lever Hoist with 15 ft. Chain Fall	1 TON
787487	PLH100C20	1 Ton Lever Hoist with 20 ft. Chain Fall	1 TON
787488	PLH160C05	1.6 Ton Lever Hoist with 5 ft. Chain Fall	1.6 TON
787489	PLH160C10	1.6 Ton Lever Hoist with 10 ft. Chain Fall	1.6 TON
787490	PLH160C15	1.6 Ton Lever Hoist with 15 ft. Chain Fall	1.6 TON
787491	PLH160C20	1.6 Ton Lever Hoist with 20 ft. Chain Fall	1.6 TON
787496	PLH320C05	3.2 Ton Lever Hoist with 5 ft. Chain Fall	3.2 TON
787497	PLH320C10	3.2 Ton Lever Hoist with 10 ft. Chain Fall	3.2 TON
787498	PLH320C15	3.2 Ton Lever Hoist with 15 ft. Chain Fall	3.2 TON
787499	PLH320C20	3.2 Ton Lever Hoist with 20 ft. Chain Fall	3.2 TON
787500	PLH630C05	6.3 Ton Lever Hoist with 5 ft. Chain Fall	6.3 TON
787501	PLH630C10	6.3 Ton Lever Hoist with 10 ft. Chain Fall	6.3 TON
787502	PLH630C15	6.3 Ton Lever Hoist with 15 ft. Chain Fall	6.3 TON
787503	PLH630C20	6.3 Ton Lever Hoist with 20 ft. Chain Fall	6.3 TON
787504	PLH900C05	9 Ton Lever Hoist with 5 ft. Chain Fall	9 TON
787505	PLH900C10	9 Ton Lever Hoist with 10 ft. Chain Fall	9 TON
787506	PLH900C15	9 Ton Lever Hoist with 15 ft. Chain Fall	9 TON
787507	PLH900C20	9 Ton Lever Hoist with 20 ft. Chain Fall	9 TON

PREMIUM LEVER HOIST WITH OVERLOAD PROTECTION

Sumner's Premium Lever Hoists with Overload Protection offers an innovative and heavy-duty design to tackle your toughest lifts of various sizes! Our premium lever hoists include a single fused brake design and zinc phosphate load chain for superior corrosion resistance. Available in .8 to 9 ton lifting weight capacities.

- No Preload Required
- Meet all ANSI/ASME, OSHA and CE Hoisting Standards
- Top Hook is easily removable
- Hard Steel Load Sheave Rollers
- 1.5x Safety Tested
- Unique zinc phosphate chain design

SPECIFICATIONS

ITEM #	STOCK #	DESCRIPTION	LIFTING WEIGHT CAPACITY
787508	PLH080C05WO	.8 Ton Lever Hoist with 5 ft. Chain Fall w/ Overload Protection	.8 TON
787509	PLH080C10WO	.8 Ton Lever Hoist with 10 ft. Chain Fall w/ Overload Protection	.8 TON
787510	PLH080C15WO	.8 Ton Lever Hoist with 15 ft. Chain Fall w/ Overload Protection	.8 TON
787511	PLH080C20WO	.8 Ton Lever Hoist with 20 ft. Chain Fall w/ Overload Protection	.8 TON
787512	PLH100C05WO	1 Ton Lever Hoist with 5 ft. Chain Fall w/ Overload Protection	1 TON
787513	PLH100C10WO	1 Ton Lever Hoist with 10 ft. Chain Fall w/ Overload Protection	1 TON
787514	PLH100C15WO	1 Ton Lever Hoist with 15 ft. Chain Fall w/ Overload Protection	1 TON
787515	PLH100C20WO	1 Ton Lever Hoist with 20 ft. Chain Fall w/ Overload Protection	1 TON
787516	PLH160C05WO	1.6 Ton Lever Hoist with 5 ft. Chain Fall w/ Overload Protection	1.6 TON
787517	PLH160C10WO	1.6 Ton Lever Hoist with 10 ft. Chain Fall w/ Overload Protection	1.6 TON
787518	PLH160C15WO	1.6 Ton Lever Hoist with 15 ft. Chain Fall w/ Overload Protection	1.6 TON
787519	PLH160C20WO	1.6 Ton Lever Hoist with 20 ft. Chain Fall w/ Overload Protection	1.6 TON
787524	PLH320C05WO	3.2 Ton Lever Hoist with 5 ft. Chain Fall w/ Overload Protection	3.2 TON
787525	PLH320C10WO	3.2 Ton Lever Hoist with 10 ft. Chain Fall w/ Overload Protection	3.2 TON
787526	PLH320C15WO	3.2 Ton Lever Hoist with 15 ft. Chain Fall w/ Overload Protection	3.2 TON
787527	PLH320C20WO	3.2 Ton Lever Hoist with 20 ft. Chain Fall w/ Overload Protection	3.2 TON
787528	PLH630C05WO	6.3 Ton Lever Hoist with 5 ft. Chain Fall w/ Overload Protection	6.3 TON
787529	PLH630C10WO	6.3 Ton Lever Hoist with 10 ft. Chain Fall w/ Overload Protection	6.3 TON
787530	PLH630C15WO	6.3 Ton Lever Hoist with 15 ft. Chain Fall w/ Overload Protection	6.3 TON
787531	PLH630C20WO	6.3 Ton Lever Hoist with 20 ft. Chain Fall w/ Overload Protection	6.3 TON
787532	PLH900C05WO	9 Ton Lever Hoist with 5 ft. Chain Fall w/ Overload Protection	9 TON
787533	PLH900C10WO	9 Ton Lever Hoist with 10 ft. Chain Fall w/ Overload Protection	9 TON
787534	PLH900C15WO	9 Ton Lever Hoist with 15 ft. Chain Fall w/ Overload Protection	9 TON
787535	PLH900C20WO	9 Ton Lever Hoist with 20 ft. Chain Fall w/ Overload Protection	9 TON



CHAIN BLOCK HOISTS

CHAIN BLOCK HOISTS



Sumner's Chain Block Hoists are designed to thrive in light industrial applications work with capacities ranging from 1/2-10 tons. Sumner's Chain Block Hoist build on our legacy of reliable vertical lifting.

- Meet all ANSI/ASME, OSHA and CE Hoisting Standards
- Top Hook is easily removable
- Hard Steel Load Sheave Rollers
- 1.5x Safety Tested

SPECIFICATIONS

ITEM #	STOCK #	DESCRIPTION	LIFTING WEIGHT CAPACITY
787558	CB050C10	1/2 Ton Chain Hoist with 10 ft. Chain Fall	1/2 TON
787559	CB050C15	1/2 Ton Chain Hoist with 15 ft. Chain Fall	1/2 TON
787560	CB050C20	1/2 Ton Chain Hoist with 20 ft. Chain Fall	1/2 TON
787561	CB050C30	1/2 Ton Chain Hoist with 30 ft. Chain Fall	1/2 TON
787562	CB100C10	1 Ton Chain Hoist with 10 ft. Chain Fall	1 TON
787563	CB100C15	1 Ton Chain Hoist with 15 ft. Chain Fall	1 TON
787564	CB100C20	1 Ton Chain Hoist with 20 ft. Chain Fall	1 TON
787565	CB100C30	1 Ton Chain Hoist with 30 ft. Chain Fall	1 TON
787566	CB150C10	1-1/2 Ton Chain Hoist with 10 ft. Chain Fall	1-1/2 TON
787567	CB150C15	1-1/2 Ton Chain Hoist with 15 ft. Chain Fall	1-1/2 TON
787568	CB150C20	1-1/2 Ton Chain Hoist with 20 ft. Chain Fall	1-1/2 TON
787569	CB150C30	1-1/2 Ton Chain Hoist with 30 ft. Chain Fall	1-1/2 TON
787570	CB200C10	2 Ton Chain Hoist with 10 ft. Chain Fall	2 TON
787571	CB200C15	2 Ton Chain Hoist with 15 ft. Chain Fall	2 TON
787572	CB200C20	2 Ton Chain Hoist with 20 ft. Chain Fall	2 TON
787573	CB200C30	2 Ton Chain Hoist with 30 ft. Chain Fall	2 TON
787574	CB300C10	3 Ton Chain Hoist with 10 ft. Chain Fall	3 TON
787575	CB300C15	3 Ton Chain Hoist with 15 ft. Chain Fall	3 TON
787576	CB300C20	3 Ton Chain Hoist with 20 ft. Chain Fall	3 TON
787577	CB300C30	3 Ton Chain Hoist with 30 ft. Chain Fall	3 TON
787578	CB500C10	5 Ton Chain Hoist with 10 ft. Chain Fall	5 TON
787579	CB500C15	5 Ton Chain Hoist with 15 ft. Chain Fall	5 TON
787580	CB500C20	5 Ton Chain Hoist with 20 ft. Chain Fall	5 TON
787581	CB500C30	5 ton Chain Hoist with 30 ft. Chain Fall	5 TON
787582	CB1KC10	10 ton Chain Hoist with 10 ft. Chain Fall	10 TON
787583	CB1KC15	10 ton Chain Hoist with 15 ft. Chain Fall	10 TON
787584	CB1KC20	10 ton Chain Hoist with 20 ft. Chain Fall	10 TON
787585	CB1KC30	10 ton Chain Hoist with 30 ft. Chain Fall	10 TON

CHAIN BLOCK HOISTS

PREMIUM CHAIN BLOCK HOISTS



Sumner's Premium Chain Block Hoists' low headroom design is ideal for your 1/4-20 ton lifting needs. Meets all ANSI/ASME, OSHA and CE Hoisting Standards.

- Top Hook is easily removable
- Hard Steel Load Sheave Rollers
- 1.5x Safety Tested
- Unique zinc phosphate chain design

SPECIFICATIONS

ITEM #	STOCK #	DESCRIPTION	LIFTING WEIGHT CAPACITY
787400	PCB025C10	1/4 Ton Chain Hoist with 10 ft. Chain Fall	1/4 TON
787401	PCB025C15	1/4 Ton Chain Hoist with 15 ft. Chain Fall	1/4 TON
787402	PCB025C20	1/4 Ton Chain Hoist with 20 ft. Chain Fall	1/4 TON
787403	PCB025C30	1/4 Ton Chain Hoist with 30 ft. Chain Fall	1/4 TON
787404	PCB050C10	1/2 Ton Chain Hoist with 10 ft. Chain Fall	1/2TON
787405	PCB050C15	1/2 Ton Chain Hoist with 15 ft. Chain Fall	1/2TON
787406	PCB050C20	1/2 Ton Chain Hoist with 20 ft. Chain Fall	1/2TON
787407	PCB050C30	1/2 Ton Chain Hoist with 30 ft. Chain Fall	1/2TON
787408	PCB100C10	1 Ton Chain Hoist with 10 ft. Chain Fall	1 TON
787409	PCB100C15	1 Ton Chain Hoist with 15 ft. Chain Fall	1 TON
787410	PCB100C20	1 Ton Chain Hoist with 20 ft. Chain Fall	1 TON
787411	PCB100C30	1 Ton Chain Hoist with 30 ft. Chain Fall	1 TON
787412	PCB150C10	1-1/2 Ton Chain Hoist with 10 ft. Chain Fall	1-1/2 TON
787413	PCB150C15	1-1/2 Ton Chain Hoist with 15 ft. Chain Fall	1-1/2 TON
787414	PCB150C20	1-1/2 Ton Chain Hoist with 20 ft. Chain Fall	1-1/2 TON
787415	PCB150C30	1-1/2 Ton Chain Hoist with 30 ft. Chain Fall	1-1/2 TON
787416	PCB200C10	2 Ton Chain Hoist with 10 ft. Chain Fall	2 TON
787417	PCB200C15	2 Ton Chain Hoist with 15 ft. Chain Fall	2 TON
787418	PCB200C20	2 Ton Chain Hoist with 20 ft. Chain Fall	2 TON
787419	PCB200C30	2 Ton Chain Hoist with 30 ft. Chain Fall	2 TON
787420	PCB300C10	3 Ton Chain Hoist with 10 ft. Chain Fall	3 TON
787421	PCB300C15	3 Ton Chain Hoist with 15 ft. Chain Fall	3 TON
787422	PCB300C20	3 Ton Chain Hoist with 20 ft. Chain Fall	3 TON
787423	PCB300C30	3 Ton Chain Hoist with 30 ft. Chain Fall	3 TON
787424	PCB500C10	5 Ton Chain Hoist with 10 ft. Chain Fall	5 TON
787425	PCB500C15	5 Ton Chain Hoist with 15 ft. Chain Fall	5 TON
787426	PCB500C20	5 Ton Chain Hoist with 20 ft. Chain Fall	5 TON
787427	PCB500C30	5 Ton Chain Hoist with 30 ft. Chain Fall	5 TON
787428	PCB1KC10	10 Ton Chain Hoist with 10 ft. Chain Fall	10 TON

CHAIN BLOCK HOISTS

PREMIUM CHAIN BLOCK HOISTS CONT.



SPECIFICATIONS

ITEM #	STOCK #	DESCRIPTION	LIFTING WEIGHT CAPACITY
787429	PCB1KC15	10 Ton Chain Hoist with 15 ft. Chain Fall	10 TON
787430	PCB1KC20	10 Ton Chain Hoist with 20 ft. Chain Fall	10 TON
787431	PCB1KC30	10 Ton Chain Hoist with 30 ft. Chain Fall	10 TON
787432	PCB1.5KC10	15 Ton Chain Hoist with 10 ft. Chain Fall	15 TON
787433	PCB1.5KC15	15 Ton Chain Hoist with 15 ft. Chain Fall	15 TON
787434	PCB1.5KC20	15 Ton Chain Hoist with 20 ft. Chain Fall	15 TON
787435	PCB1.5KC30	15 Ton Chain Hoist with 30 ft. Chain Fall	15 TON
787436	PCB2KC10	20 Ton Chain Hoist with 10 ft. Chain Fall	20 TON
787437	PCB2KC15	20 Ton Chain Hoist with 15 ft. Chain Fall	20 TON
787438	PCB2KC20	20 Ton Chain Hoist with 20 ft. Chain Fall	20 TON
787439	PCB2KC30	20 Ton Chain Hoist with 30 ft. Chain Fall	20 TON

CHAIN BLOCK HOISTS

PREMIUM CHAIN BLOCK HOISTS WITH OVERLOAD PROTECTION



Sumner's Premium Chain Block Hoists' low headroom design is ideal for your 1/4-20 ton lifting needs. Meets all ANSI/ASME, OSHA and CE Hoisting Standards.

- Top Hook is easily removable
- Hard Steel Load Sheave Rollers
- 1.5x Safety Tested
- Unique zinc phosphate chain design

SPECIFICATIONS

ITEM #	STOCK #	DESCRIPTION	LIFTING WEIGHT CAPACITY
787448	PCB100C10WO	1 Ton Chain Hoist with 10 ft. Chain Fall w/ Overload Protection	1 TON
787449	PCB100C15WO	1 Ton Chain Hoist with 15 ft. Chain Fall w/ Overload Protection	1 TON
787450	PCB100C20WO	1 Ton Chain Hoist with 20 ft. Chain Fall w/ Overload Protection	1 TON
787451	PCB100C30WO	1 Ton Chain Hoist with 30 ft. Chain Fall w/ Overload Protection	1 TON
787452	PCB150C10WO	1-1/2 Ton Chain Hoist with 10 ft. Chain Fall w/ Overload Protection	1-1/2 TON
787453	PCB150C15WO	1-1/2 Ton Chain Hoist with 15 ft. Chain Fall w/ Overload Protection	1-1/2 TON
787454	PCB150C20WO	1-1/2 Ton Chain Hoist with 20 ft. Chain Fall w/ Overload Protection	1-1/2 TON
787455	PCB150C30WO	1-1/2 Ton Chain Hoist with 30 ft. Chain Fall w/ Overload Protection	1-1/2 TON
787456	PCB200C10WO	2 Ton Chain Hoist with 10 ft. Chain Fall w/ Overload Protection	2 TON
787457	PCB200C15WO	2 Ton Chain Hoist with 15 ft. Chain Fall w/ Overload Protection	2 TON
787458	PCB200C20WO	2 Ton Chain Hoist with 20 ft. Chain Fall w/ Overload Protection	2 TON
787459	PCB200C30WO	2 Ton Chain Hoist With 30 ft. Chain Fall w/ Overload Protection	2 TON
787460	PCB300C10WO	3 Ton Chain Hoist With 10 ft. Chain Fall w/ Overload Protection	3 TON
787461	PCB300C15WO	3 Ton Chain Hoist With 15 ft. Chain Fall w/ Overload Protection	3 TON
787462	PCB300C20WO	3 Ton Chain Hoist With 20 ft. Chain Fall w/ Overload Protection	3 TON
787463	PCB300C30WO	3 Ton Chain Hoist With 30 ft. Chain Fall w/ Overload Protection	3 TON
787464	PCB500C10WO	5 Ton Chain Hoist With 10 ft. Chain Fall w/ Overload Protection	5 TON
787465	PCB500C15WO	5 Ton Chain Hoist With 15 ft. Chain Fall w/ Overload Protection	5 TON
787426	PCB500C20WO	5 Ton Chain Hoist With 20 Ft. Chain Fall w/ Overload Protection	5 TON
787427	PCB500C30WO	5 Ton Chain Hoist With 30 Ft. Chain Fall w/ Overload Protection	5 TON
787428	PCB1KC10WO	10 Ton Chain Hoist With 10 Ft. Chain Fall w/ Overload Protection	10 TON
787429	PCB1KC15WO	10 Ton Chain Hoist With 15 Ft. Chain Fall w/ Overload Protection	10 TON
787430	PCB1KC20WO	10 Ton Chain Hoist With 20 Ft. Chain Fall w/ Overload Protection	10 TON
787431	PCB1KC30WO	10 Ton Chain Hoist With 30 Ft. Chain Fall w/ Overload Protection	10 TON

HOISTS | Premium Chain Block Hoists
With Overload Protection

CHAIN BLOCK HOISTS

PREMIUM CHAIN BLOCK HOISTS WITH OVERLOAD PROTECTION CONT.




SPECIFICATIONS

ITEM #	STOCK #	DESCRIPTION	LIFTING WEIGHT CAPACITY
787432	PCB1.5KC10WO	15 Ton Chain Hoist With 10 Ft. Chain Fall w/ Overload Protection	15 TON
787433	PCB1.5KC15WO	15 Ton Chain Hoist With 15 Ft. Chain Fall w/ Overload Protection	15 TON
787434	PCB1.5KC20WO	15 Ton Chain Hoist With 20 Ft. Chain Fall w/ Overload Protection	15 TON
787475	PCB1.5KC30WO	15 Ton Chain Hoist with 30 ft. Chain Fall w/ Overload Protection	15 TON
787476	PCB2KC10WO	20 Ton Chain Hoist with 10 ft. Chain Fall w/ Overload Protection	20 TON
787477	PCB2KC15WO	20 Ton Chain Hoist with 15 ft. Chain Fall w/ Overload Protection	20 TON
787478	PCB2KC20WO	20 Ton Chain Hoist with 20 ft. Chain Fall w/ Overload Protection	20 TON
787479	PCB2KC30WO	20 Ton Chain Hoist with 30 ft. Chain Fall w/ Overload Protection	20 TON

HOISTS | Premium Chain Block Hoists
with Overload Protection



SUMNER*

 A Southwire Company

2019 HOIST CATALOG

GET SOCIAL WITH US:



[/SOUTHWIRETOOLS](#)
[/SOUTHWIRETOOLSLATINO](#)



[@SOUTHWIRETOOLS](#)



[@SUMNERCO](#)



[SOUTHWIRETOOLS](#)

[SUMNER.COM](#) | 281-999-6900