

## Alpha Stats

**10**  **ml Average**  
Graft Per Level

**7** Graft  
Materials Used

 **8** **min**  
Average time to trial, insert cage, graft, and release

**9** cases done in ASC's  **41** cases done in Hospitals

"One of the best things about the KG2 is the ease with which one can deliver abundant bone graft through the tube and how tightly you can pack it compared to conventional techniques."

Jeffrey Dick, MD, of Twin Cities Orthopedics in MN

**66** Implants Used

  
45 Lordotic

  
21 Parallel

 **9** surgeons

5 Neuro &  
4 Ortho

"I can tell that the KG2 is a very well-thought-out cage design. Somebody put some real thought into this. It is very user-friendly."

Catherine Gallo, MD, of Two Rivers Surgical Center in OR

"Takes all the fiddle factor out of the grafting part of the procedure."

Anders Cohen, DO, of Brooklyn Hospital in NY



### Cases

**50**

Data based on observation of surgeries in the first 50 cases completed with KG2

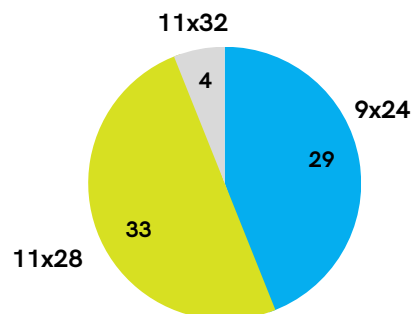
"I will change my approach and do more PLIFs because the KG2 system is so easy to use and the graft volume is impressive. Love this cage system."

Blake Burkert, MD  
NeuroSpine in OR

**45**  
TLIF's

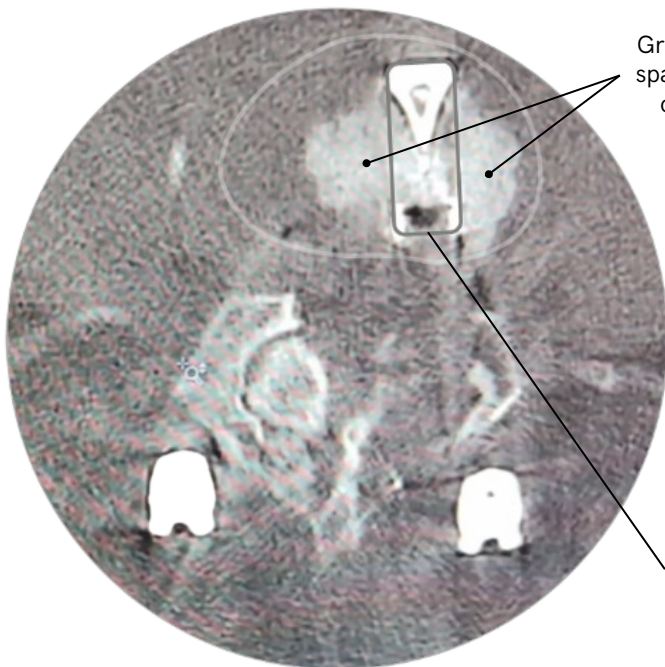
**5**  
PLIF's

### Implant Footprints



## L4/L5 TLIF

Implant: 11x28x9x6°

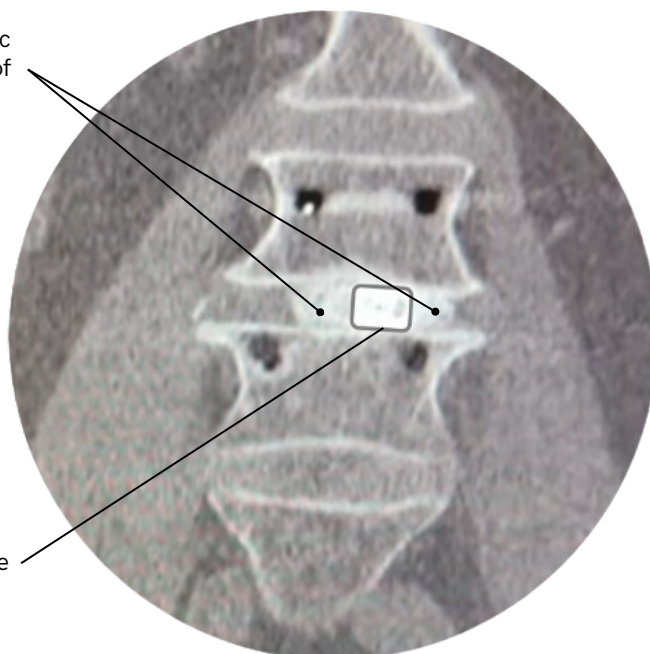


Axial  $\mu$ CT Slice  
One Week Post-Op

Graft in the disc space outside of cage profile

Cage profile

Bone Graft Material: **10 ml** Cortical-Cancellous Chips  
Time to trial, insert cage, graft, and release: **10 min**

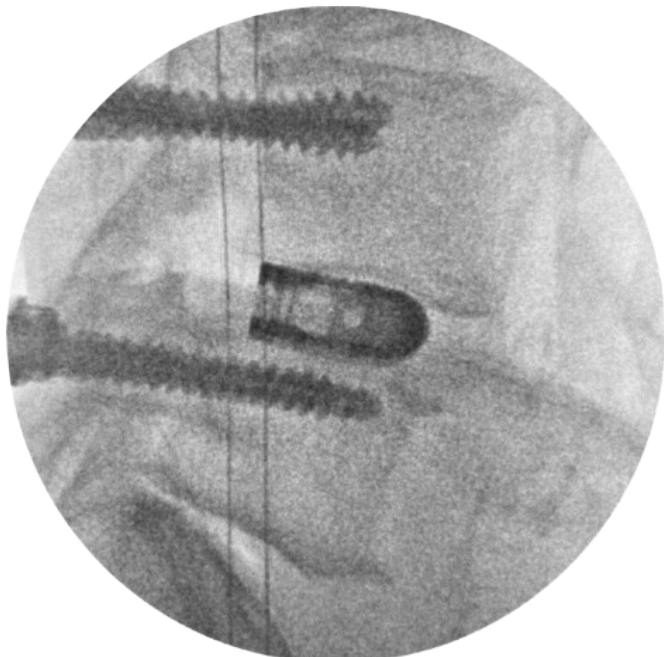


AP  $\mu$ CT Slice  
One Week Post-Op

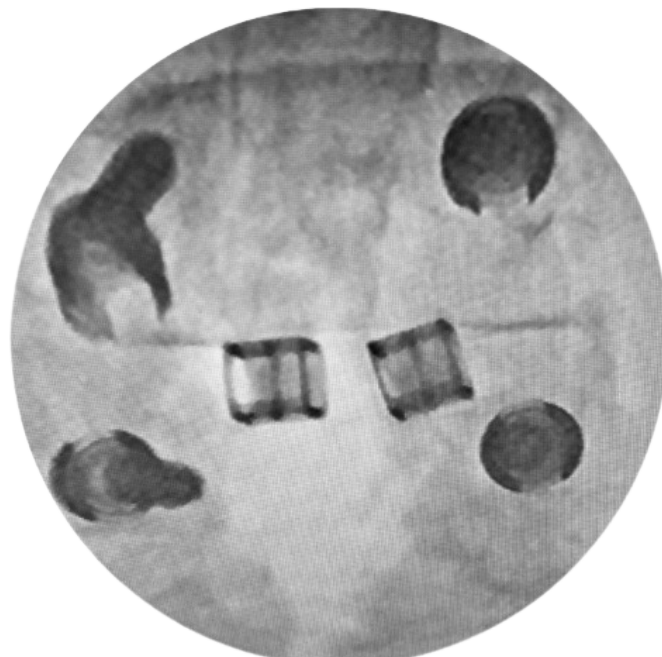
Bone Graft Material: **10 ml** Viable Cell Allograft  
Time to trial, insert cage, graft, and release: **18 min** for both cages

## L4/L5 PLIF

Implant: 9x24x10x0°



Lateral  
Intra-Op



AP  
Intra-Op