



Kickstand Sensor Deactivation Kit

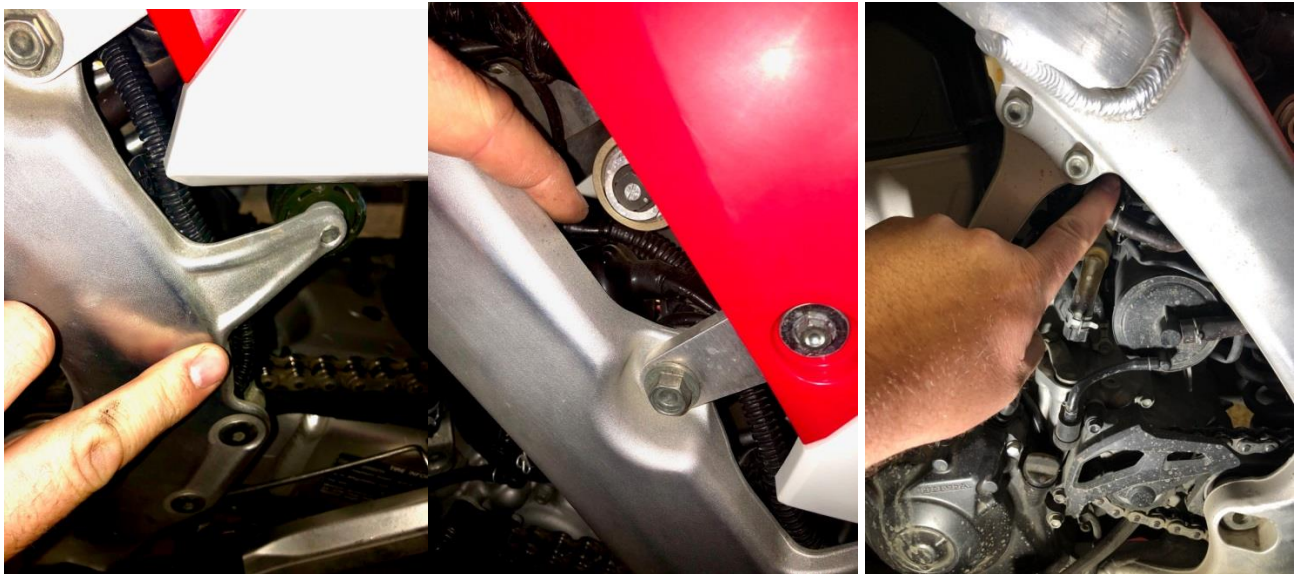
INSTALLATION GUIDE

THIS PRODUCT IS FOR OFF-ROAD OR CLOSED COURSE USE ONLY

DISABLING THE OEM KILL ENGINE KICKSTAND SWITCH WILL BE THE CUSTOMERS MECHANICAL AND LEGAL RESPONSIBILITY

INSTALLATION

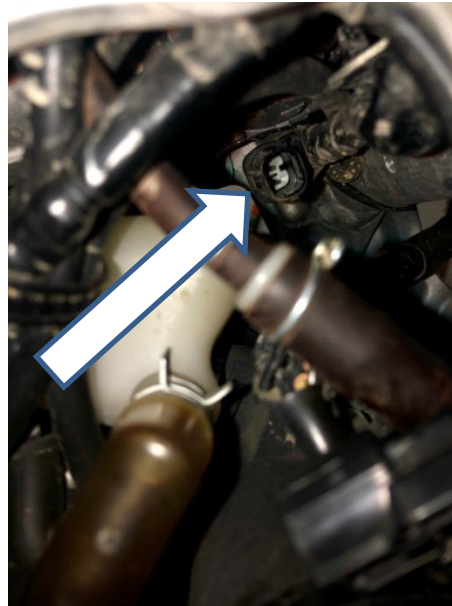
1. Follow the OE wiring from the Kickstand sensor up the frame to the plug on the wiring harness. The connection is located above the emissions canister and below the fuel tank.
- 2.



3. Disconnect the OE kickstand sensor wiring at the connection. Disconnect by compressing the release at the back of the connector on the chain side of the engine. Use slight tension to pull the connection apart while connection release tab is compressed. Place OE wiring out of the way.

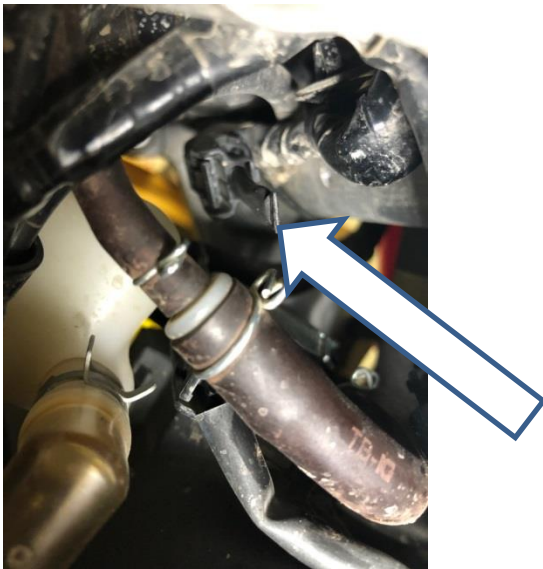


Kickstand Sensor Deactivation Kit



Small fingers/ hands help – but you already knew that

4. Install the AP3 Kickstand delete dongle in place of the OE kickstand wiring connection. You should hear/feel the connection click to indicate correct installation



You have completed the OE kickstand sensor deactivation.



Kickstand Sensor Deactivation Kit

Next steps:

If continuing to use the OEM kickstand, zip-ty the OE kickstand wiring to a secure location away from moving parts or heat. Or remove the remaining sensor and sensor wiring.

Recommended:

If removing the OEM kickstand assembly or replacing the OEM kickstand with an aftermarket kickstand you will need to cut the zip-ty holding the kickstand sensor wiring to the frame and then continue to remove wiring along with the complete OEM kickstand assembly.

Your motorcycle will now continue to run in gear with the kickstand removed or in the down position