

IQ Battery 10CS

The IQ Battery 10CS AC-coupled system is compact, powerful, reliable, and safe. It has a total usable capacity¹ of 10.0 kWh and includes four embedded, grid-forming microinverters with a 7.08 kVA continuous power rating. It provides backup capability, and installers can quickly design the right system size to meet the customer's needs.



Key specifications	IQBATTERY-10CS-1P-NA
Rated (continuous) output power	7.08 kVA ¹
Rated output current (@240 V _{L-L} AC~)	29.5 A ¹
Rated neutral current (@120 V _{L-N} AC~)	24 A ¹
Interconnection	Single-phase
Nominal voltage	120/240 VAC~
Nominal frequency	60 Hz
Usable capacity	10.0 kWh ¹
Ambient operating temperature range (charging) ¹	-4°F to 122°F (-20°C to 50°C) Non-condensing
Ambient operating temperature range (discharging) ¹	-4°F to 131°F (-20°C to 55°C) Non-condensing
Chemistry	Lithium iron phosphate (LFP)
Mounting	Wall-mount or pedestal-mount (sold separately)

Powerful

- Provides 56 A peak current for three seconds
- Includes four embedded IQ8B Microinverters
- Most powerful microinverter with up to 2.1 kVA continuous power

Reliable

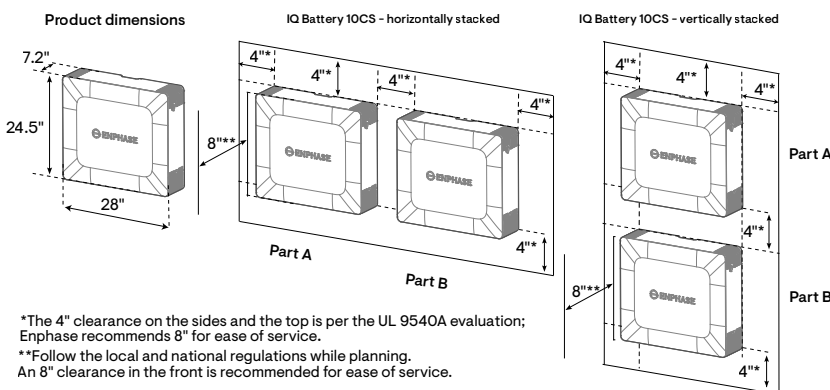
- Cools passively with no moving parts or fans
- Uses wired communication for fast and consistent connection
- Updates software and firmware remotely

Simple

- Fully integrated AC battery system with neutral forming capabilities
- Installs and commissions easily
- Offers homeowners remote monitoring and control from the Enphase App
- Field replaceable components

Safe

- Evaluated to UL 9540 A, the highest industry standard for battery safety
- Uses LFP chemistry for maximum safety and longevity



¹ Refer to the complete set of specifications on subsequent pages.

Product details	IQBATTERY-10CS-1P-NA	
Name	IQ Battery 10CS	
Description	<p>The IQ Battery 10CS system with integrated IQ Microinverters (SKU: IQ8BL, IQ8BN) with a battery management system (BMS) as part of IQBL Microinverters, includes:</p> <ul style="list-style-type: none"> • Two 5 kWh battery units. • One IQ Battery 10CS cover kit with two covers, interconnect cables, and accessories. 	
Model number	IQBATTERY-10CS-1P-NA ²	
Ordering SKU	Standard	Domestic
5 kWh battery unit	B05-C01-US00-1-3	B05-C01-US00-1-3-DOM
IQ Battery 10CS cover kit	B10CS-NC-0708-O	B10CS-NC-0708-O-DOM

Limited warranty	
IQ Battery 10CS unit	60% capacity, up to 15 years, or 6,000 cycles ³

Output (AC~)	@240 VAC ⁴
Rated (continuous) output power	7.08 kVA ⁵
Maximum continuous discharge rates (MCDR)	7.08 kW
Nominal voltage/range	240/211–264 VAC~
Nominal frequency/range	60/57–63 Hz
Rated output current (@240 V _{L-L} AC~)	29.5 A ⁵
Rated neutral current (@240 V _{L-N} AC~)	24 A ⁶
Peak output current (@240 V _{L-L} AC~)	56 A (three seconds), 44.8 A (ten seconds)
Power Start capability	Up to 90 A LRA ⁷
Power factor (adjustable)	0.85 leading ... 0.85 lagging
Maximum conductor size supported	3 AWG
Overcurrent protection device (OCPD)	40 A OCPD requires a minimum of 8 AWG for one IQ Battery 10CS or 80 A OCPD requires a minimum of 4 AWG for two or more IQ Battery 10CS ⁸
Interconnection	Single-phase
AC round-trip efficiency ⁹	90%

Battery	
Total capacity ¹⁰	10.0 kWh
Usable capacity ¹¹	10.0 kWh
DC round-trip efficiency	96%
Nominal DC voltage	76.8 V

² The model number is used on the product nameplate, Certificate of Compliance, and in the official regulatory listings (California Energy Commission). For all the interconnection applications and permitting processes, ensure that the model number is used, and not the ordering SKU.

³ Whichever occurs first. Restrictions apply.

⁴ Supported in both grid-connected and backup/off-grid operations.

⁵ 7.08 kVA, 29.5 A for the balanced 240 V_{L-L} loads.

⁶ A maximum of 24 A, 120 V_{L-N} unbalanced loads can be supported along with 5.5 A, 240 V_{L-L} loads.

⁷ Power Start capability may vary.

⁸ More than two IQ Battery 10CS on a 4 AWG circuit protected by 80 A OCPD requires setting Power Control System: IQ Battery Oversubscription.

⁹ AC to the battery to AC at 50% power rating.

¹⁰ The IQ Battery 10CS is typically shipped with a state of charge (SoC) between 20% and 30% to ensure safe transportation and optimal battery health during storage and handling.

¹¹ The battery's usable capacity supports loads and turns PV on (when off-grid), in normal daily operation. The usable capacity includes a safety-critical limit of 2% that safeguards the customer's asset in case of a long-duration grid outage. An additional 3% capacity is maintained for battery electronic sustenance at night. Refer to https://link.enphase.com/iqbattery_usable_capacity_en_na for more information.

Battery	
Maximum DC voltage	86.4 V
Ambient operating temperature range (charging) ¹²	-4°F to 122°F (-20°C to 50°C) non-condensing
Ambient operating temperature range (discharging) ¹³	-4°F to 131°F (-20°C to 55°C) non-condensing
Optimum operating temperature range	32°F to 86°F (0°C to 30°C) ¹⁴
Chemistry	Lithium iron phosphate (LFP)

Mechanical data	
Dimensions (H × W × D)	Two units of 24.5 in × 28 in × 7.2 in (621 mm × 708 mm × 183 mm) each
Maximum lifting weight	125 lb (57 kg)
Total installed weight for IQ Battery 10CS	326 lb (148 kg)
Enclosure	Outdoor-NEMA 3R
Cooling	Natural convection
Operating noise @1 m	<33 dBA
Altitude ¹⁵	Up to 9,842 ft (3,000 m)
Mounting	Wall-mount or pedestal-mount (sold separately)

Features and compliance	
Compatibility	Compatible with IQ and M Series Microinverters, IQ Meter Collar, IQ Combiner 6C, IQ Battery 10C, and IQ Gateway for grid-tied and backup operations.
Communication	Wired control communication
Services	Backup, Self-Consumption, TOU, and NEM integrity
Monitoring	Enphase Installer Platform and Enphase App monitoring options; API integration
Compliance	CA Rule 21 (UL 1741-SA), IEEE 1547:2018 (UL 1741-SB, 3rd Ed.) CAN/CSA C22.2 No. 107.1-16 UL 9540 ¹⁶ , UL 9540 A ¹⁷ , UN 38.3, UL 1998, UL 991, NEMA Type 3R, AC156 EMI: 47 CFR, Part 15, Class B, ICES 003 Cell module: UL 1973, UN 38.3 Inverters: UL 62109-1, IEC 62109-2

What's in the box

A total of three boxes: Two boxes contain the 5.0 kWh battery units, and the third box contains the IQ Battery 10CS cover kit.

5.0 kWh battery unit

Battery units	Two 5.0 kWh battery units of IQ Battery 10CS
Mounting bracket	Two mounting brackets for mounting the batteries on the wall
Seismic screws	Four seismic screws for securing the battery unit on the mounting bracket
Mounting bracket fasteners	Twelve M8 hexagonal Phillips screws with washers for mounting the second wall bracket on the preinstalled battery unit

¹² A reduction in charging power occurs at temperatures below 59°F (15°C) and above 113°F (45°C).

¹³ A reduction in discharging power occurs at temperatures below 32°F (0°C) and above 122°F (50°C).

¹⁴ Keeping the battery in this temperature range maximizes the battery life.

¹⁵ Refer to the data sheet for all components used with the IQ Battery 10CS to determine the maximum altitude. For example, the IQ Battery 10CS has a maximum altitude limit of 3,000 meters, while the IQ Meter Collar has a limit of 8,202 ft (2,500 m). When used together, the maximum altitude is restricted to 8,202 ft (2,500 m).

¹⁶ Following local standards, choose a non-habitable indoor location (like a 2-car garage) or an outdoor location where the ambient temperature and humidity are within -20°C to 55°C (-4°F to 131°F) and 5% to 95% RH, non-condensing. Avoid direct sunlight to ensure the temperature stays in the optimal operating range. This ensures charging and discharging currents are not derated due to temperature.

¹⁷ Evaluated to UL 9540 A for thermal runaway fire propagation and reduced separation distance as required in 2021 IRC R328.3.1, 2021 IFC 1207.1.5, and 2023 NFPA 855 15.3.1 and 9.1.5. Follow all installation instructions and local codes and requirements of the Authority Having Jurisdiction (AHJ) when installing the Enphase Energy System.

What's in the box

Drill template	Two drill templates to mark drilling points and conduit entry locations on the wall
IQ Battery 10CS cover kit	
IQ Battery 10CS covers	Two covers for 5 kWh battery units of IQ Battery 10CS
Interconnect power cable	Interconnect power cable assembly for connecting two battery units of IQ Battery 10CS (L1, L2, N-4 AWG, GND-8 AWG) ¹⁸
Interconnect control cable	Interconnect control cable for connecting two 5 kWh battery units of IQ Battery 10CS, having one preinstalled control connector (without a resistor) at one end
Control connector with resistor	Two spare control connectors with a resistor for control wiring
Quick install guide (QIG)	QIG for IQ Battery unit installation instructions
Cable holder	Two cable holders for cable management in wiring compartments
Conduit covers	Two left-side and two right-side conduit covers to close unused conduit openings
Cover locking screw	Four cover locking screws for securing the covers

Optional accessories and replacement parts¹⁹

IQ8BL-RMA	IQ8BL Microinverter for field replacement
IQ8BN-RMA	IQ8BN Microinverter for field replacement
B05-C01-US00-1-3-RMA	IQ Battery 10C/10CS battery unit for field replacement
B10CS-CX-0708-O ²⁰	IQ Battery 10CS cover for field replacement
B05C-WB-0662-O	IQ Battery 10C/10CS wall bracket for field replacement
B05C-LH-0180-O	IQ Battery 10C/10CS Lifting Handles. Includes one left-side and one right-side lifting handle
B05C-ACFB-0138-O	IQ Battery 10C/10CS AC filter board for field replacement
B05C-NCANB-068-O	IQ Battery 10C/10CS control communication board for field replacement
B05C-CS-0161-O	IQ Battery 10C/10CS control switch for field replacement
B05C-NLTB-051-O	IQ Battery 10C/10CS live and neutral terminal block for field replacement
B05C-NGTB-051-O	IQ Battery 10C/10CS ground terminal block for field replacement
B05C-NJTB-027-O	IQ Battery 10C/10CS jumper for the terminal block for field replacement
B05C-NETB-049-O	IQ Battery 10C/10CS end stop and end cap of the terminal block for field replacement
B10CS-PIC-02500-O ²⁰	IQ Battery 10CS Interconnect power cable 8.2 ft (2.5 m) for field replacement (L1, L2, N-4 AWG, GND-8 AWG)
B10CS-CIC-02500-O ²⁰	IQ Battery 10CS Interconnect control cable 8.2 ft (2.5 m) for field replacement
B05C-CP-031-O	IQ Battery 10C/10CS conduit plug (large) for field replacement
B05C-CP-026-O	IQ Battery 10C/10CS conduit plug (small) for field replacement
B05C-CH-0132-O	IQ Battery 10C/10CS cable holder for field replacement
B05C-CC-090-O	IQ Battery 10C/10CS conduit cover for field replacement
B05C-CSLH-0180-O	IQ Battery 10C/10CS Lifting Handles and control switch bundle SKU assists installers in installation. Also, assists in lifting the units and to turn the battery ON/OFF without installing the cover.

¹⁸ Two ground cable length options are provided for installation: a long cable measuring 8.2 feet (2.5 meters) and a short cable measuring 3.3 feet (1 meter). The appropriate cable should be selected based on the spacing between the 5 kWh battery units.

¹⁹ Parts stated as for IQ Battery 10C/10CS are common to both models. If stated as for IQ Battery 10CS then it is compatible with IQ Battery 10CS only.

²⁰ Compatible with IQ Battery 10CS only.

Components of the Enphase Energy System



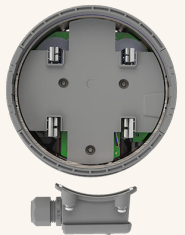
IQ Microinverters

IQ Series Microinverters pack more power into less space than other rooftop solar systems and make rooftop solar more productive, reliable, smart, and safe.



IQ Combiner 6C

IQ Combiner 6C consolidates interconnection equipment into a single enclosure and streamlines IQ Series Microinverters and IQ Battery 10CS installation by providing a consistent, pre-wired solution for residential applications.



IQ Meter Collar

IQ Meter Collar enables full home backup with IQ Battery 10CS, Enphase PV, and IQ Combiner 6C.



IQ Battery 10CS accessories

IQ Battery 10CS Lifting Handles are reusable and ease the installation process.

Revision history

Revision	Date	Description
DSH-00674-3.0	March 2026	Added "Maximum continuous discharge rates (MCDR)" parameter in the specifications table.
DSH-00674-2.0	December 2025	Updated the "Mechanical data" section.
DSH-00674-1.0	November 2025	Preliminary release.