

VILLAGE OF DEPUE

**LEAD SERVICE LINE
REPLACEMENT PLAN**

FEBRUARY 2023

Prepared by



Chamlin & Associates
ENGINEERS • SURVEYORS • PLANNERS

**Peru Morris Ottawa Mendota
Illinois**

**Professional Design Firm
License No. 184-001717**

TABLE OF CONTENTS

Introduction	1
Replacement Schedule.....	1
Cost Estimate & Financial Options	1
High-Risk Facilities.....	2
LSL Map	2
Public Notice & Public Comment	2
Diversity	2
LSL Replacement Procedure	2
LSL Customer Notification	3

Figures

Figure 1 – LSL Map	
--------------------------	--

Appendices

APPENDIX A - Cost Estimate.....	
APPENDIX B - Customer Notification Letter	

Introduction

The Village of DePue is located in Bureau County, approximately 100 miles southwest of Chicago, and serves a community of 1,838. The Village owns and operates its water treatment plant, regulated under Permit No. IL0110300. The system has 691 service connections, among which a portion is suspected to contain lead. Specifically, 99 connections are suspected to contain lead. Notably, no replacements of lead lines have been completed since 2020.

Replacement Schedule

The Village will replace 7% per year of their total lead service lines, this is in accordance with 415 ILCS 5/17.12 This objective necessitates an estimated replacement of 7 lines annually. While the Village prefers a comprehensive project to remove all lead lines at once, the feasibility of this endeavor significantly depends on the availability and allocation of grants.

Cost Estimate & Financial Options

It is nearly impossible to estimate the cost of each service line, as each presents its own unique challenges. However, a general cost estimate to replace one line can be found in Appendix A. As shown in the Appendix, replacing lead service lines entails substantial costs, estimated at \$10,000 per line, a figure likely to increase over time due to factors such as inflation and evolving construction expenses. Based on this estimate, lead service line replacement will cost the Village approximately \$990,000. If the Village were to pass this cost onto the customer by adding a surcharge to the water bill, it would approximately amount to an additional \$5.97 per month for customers over a 20-year period.

Currently, the Village faces financial constraints, making it challenging to finance these replacements independently. Moreover, passing the cost to the user would not be feasible, as the surcharge would impose a financial burden on its citizens.

Given these financial limitations, the Village will heavily rely on grants as a funding source to facilitate the replacement program. Several grants are available for this purpose, such as the Small, Underserved and Disadvantaged Communities Grant, CDBG Grant, and Reducing Lead in Drinking Water Grant. Constant monitoring of available grant opportunities is essential for the Village to overcome the financial hurdles associated with lead service line replacements.

High-Risk Facilities

The priority for replacements is directed toward areas housing sensitive populations, such as daycares and preschools. By addressing these locations as a primary focus, we aim to minimize the potential adverse health impacts on those who consume the water.

LSL Map

Please see attached lead service line map. This map will be updated as the lead services are replaced.

Public Notice & Public Comment

To ensure public awareness of the removal plan, the Village will make it readily accessible on its website. Additionally, there will be an option to pick up a copy of the plan at Village Hall if a resident is unable to access the website. The plan will then be discussed at a Village board meeting, providing an opportunity for the public to comment. Ways to access the plan and the board meeting will be advertised on the back of the water bills with at least 45 days of notice.

Diversity

All employers responsible for executing this plan must adhere to Executive Order 11246, known as 'Equal Employment Opportunity,' updated by Executive Order 11375, and supplemented by Department of Labor regulations in 41 CFR Part 60. Moreover, employers should avoid discrimination based on race, color, national origin, or sex. The Engineer will ensure compliance with the terms outlined in 40 CFR Part 33 when managing contracts awarded through EPA financial assistance agreements. Non-compliance will lead to removal from the project.

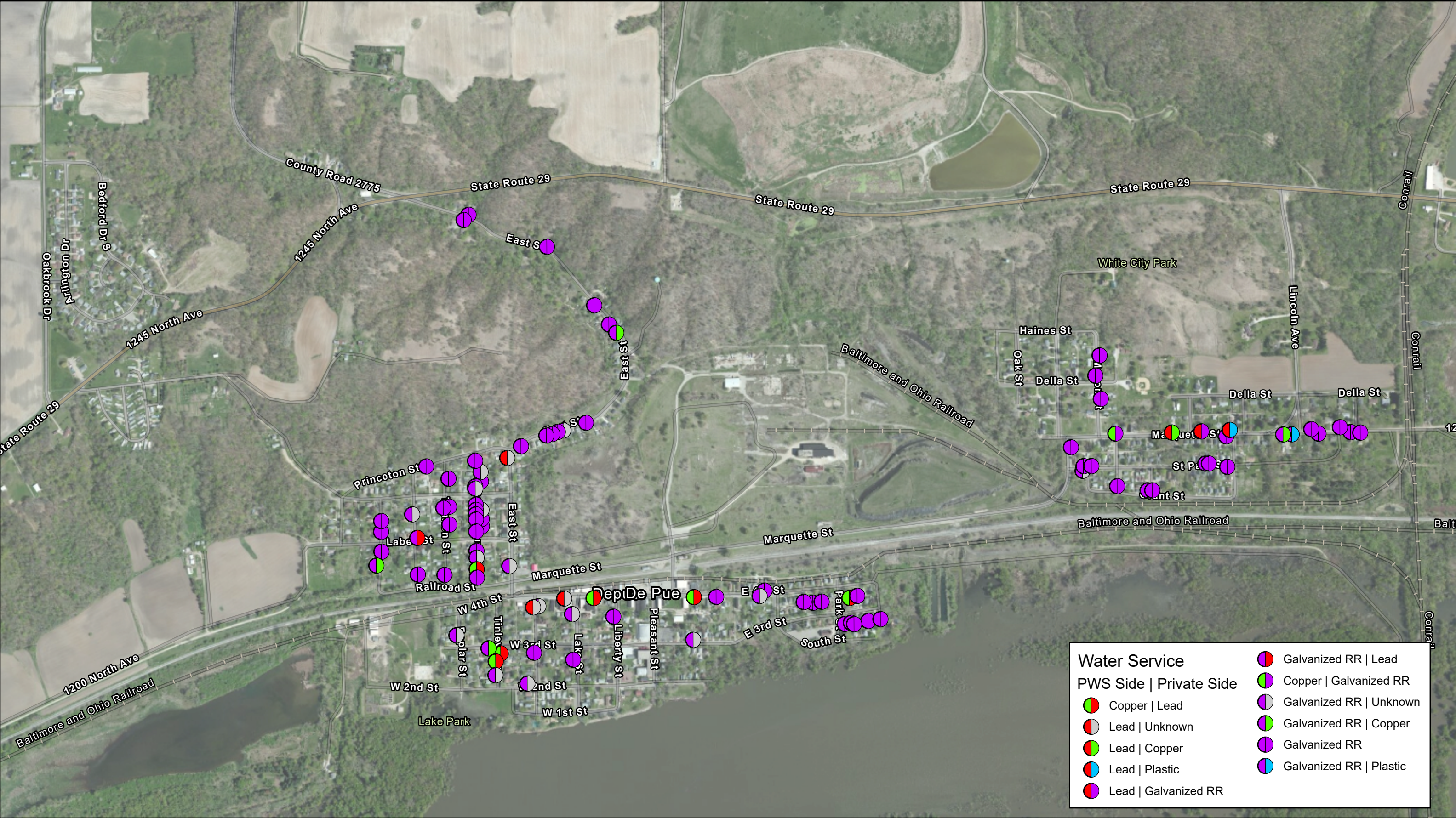
LSL Replacement Procedure

Conducting a full lead service line replacement will begin with verification of the pipe material. Planning and coordination follow, ensuring compliance with regulations, allocating resources, and communicating schedules to residents. Preparatory steps involve notifying affected parties, coordinating with utility companies, and obtaining necessary permits. During the execution phase, the process includes shutting off the water supply, excavating the lead service line, and replacing it with a non-lead alternative, followed by restoration of the site. Post-replacement tasks will involve flushing the new line along with documentation. The replacement procedure will adhere to the standards outlined in *ANSI/AWWA C810-17: Replacement and Flushing of Lead Service Lines*.

LSL Customer Notification

Each customer will receive a lead informational notice that adheres to all necessary requirements, see Appendix B. This letter will be posted at the primary entranceway of each building, ensuring visibility and accessibility to all residents. Notably, it serves as a guide, offering vital information on flushing directions and highlighting the potential risks associated with lead consumption.

FIGURES



Water Services Requiring Replacement

Village of DePue, IL

APPENDIX A

Cost Estimate



Peru - Morris
Ottawa - Mendota
Illinois

ENGINEER'S ESTIMATE OF COST

Client: Village of DePue
Project Name: Lead Service Line Replacement
9990.00

NO.	ITEM*	UNIT	QTY.	UNIT PRICE	TOTAL
1	Exploratory Digging	Hour	1	419	419
2	Removal of Lead Service Line	LS	1	1,200	1,200
3	WM Saddle	Each	1	470	470
4	Service line, complete	Each	1	2,300	2,300
5	Trench Backfill	CY	24	74	1,776
6	Class D Patch, 4", Special	SY	13	295	3,835
7					
8	TOTAL ESTIMATED CONSTRUCTION COST				10,000

Respectfully submitted,

DATE: _____

APPENDIX B

Customer Notification Letter

Lead Informational Notice

IMPORTANT INFORMATION ABOUT YOUR DRINKING WATER

Dear Water Customer:

Today's Date: _____

This notice contains important information about your water service and may affect your rights. We encourage you to have this notice translated in full into a language you understand and before you make any decisions that may be required under this notice.

Diese Mitteilung beinhaltet wichtige Informationen über Ihre Wasserversorgung und könnte Ihre Rechte beeinflussen. Wir bitten Sie, dass Sie diese Mitteilung vollständig in eine Sprache übersetzen lassen, die Sie verstehen, bevor Sie eventuelle Entscheidungen treffen, welche im Zusammenhang mit dieser Benachrichtigung erforderlich sind.

Ang abisong ito ay naglalaman ng mahalagang impormasyon tungkol sa iyong serbisyo sa tubig at maaaring makaapekto sa iyong mga karapatan. Hinihikayat namin kayo na isalin nang buo ang abisong ito sa wikang naiintindihan ninyo at bago kayo gumawa ng anumang mga desisyon na maaaring kailanganin sa abisong ito.

આ સૂચનામાં તમારી પાણીની સેવા વિશે મહત્વપૂર્ણ માહિતી શામેલ છે અને તમારા અધિકારોને અસર કરી શકે છે. અમે તમને પ્રોત્સાહિત કરીએ છીએ કે તમે આ સૂચના હેઠળ જરૂરી હોય તેવા કોઈપણ નિર્ણયો લો તે પહેલાં તમે આ સૂચનાને તમે સમજો છો તે ભાષામાં સંપૂર્ણ ભાષાંતર કરો.

Niniejsze zawiadomienie zawiera ważne informacje na temat Państwa przyłącza wodociągowego i może mieć wpływ na Państwa prawa. Przed podjęciem jakichkolwiek decyzji, które mogą być wymagane na mocy niniejszego zawiadomienia, zachęcamy Państwa do przetłumaczenia całości niniejszego zawiadomienia na język, który będzie dla Państwa zrozumiały.

يحتوي هذا الإشعار على معلومات مهمة حول خدمة المياه لديك، وقد يؤثر على حقوقك. قبل اتخاذ أي قرارات قد تكون مطلوبة بموجب هذا الإشعار فإننا نشجعك على ترجمته بالكامل إلى لغة تفهمها.

اس نوٹس میں آپ کی پانی کی سروسز سے متعلق اہم ترین معلومات موجود ہیں اور یہ آپ کے حقوق کو متاثر کر سکتا ہے۔ ہم آپ کو ترغیب دیں گے کہ آپ اس نوٹس کا مکمل طور پر اس زبان میں ترجمہ کروائیں جو آپ سمجھتے ہوں اور ممکن ہے کہ آپ کے کوئی فیصلہ لینے سے قبل اس نوٹس کے تحت یہ درکار بھی ہو۔

Este aviso contiene información importante sobre su servicio de agua y puede afectar sus derechos. Lo animamos a que traduzca este aviso a un idioma que comprenda antes de tomar cualquier decisión que pueda ser necesaria en virtud del mismo.

이 통지서에는 귀하의 권리에 영향을 미칠 수 있는 수도 서비스에 관한 중요한 정보가 제시되어 있습니다. 이 통지서에서 요구하는 결정을 내리기 전에 이 통지서를 귀하가 이해할 수 있는 언어로 번역하시기 바랍니다.

本通知包含有关您的供水服务的重要信息，可能会影响到您的权利。在您做出本通知所要求的任何决定之前，我们鼓励您将本通知完整地翻译成您可理解的语言。

Lead Informational Notice

IMPORTANT INFORMATION ABOUT YOUR DRINKING WATER

Our water system will soon begin a water line maintenance and/or construction project that may affect the lead concentrations in your drinking water. Lead, a metal found in natural deposits, is harmful to human health, especially young children, and pregnant women. It can cause damage to the brain and kidneys and can interfere with the production of red blood cells that can carry oxygen to all parts of your body. The most common exposure to lead is swallowing or breathing in lead paint chips and dust. However, lead in drinking water can also be a source of lead exposure. In the past, lead was used in some water service lines and household plumbing materials. Lead in water usually occurs through corrosion of plumbing products containing lead; however, disruption (construction or maintenance) of lead service lines may also temporarily increase lead levels in the water supply. This disruption may be sometimes caused by water main maintenance/replacement.

The purpose of this notice is for informational purposes only. While it's not known for certain whether this construction project will adversely affect the lead (if present) plumbing in and outside your home, below describes some information about the project and some preventative measures you can take to help reduce the amount of lead in drinking water.

Project Start Date: _____ Project expected to be completed by: _____

Project location and description: _____

What you can do to reduce lead exposure in drinking water during this construction project:

- *Run your water to flush out lead.* If the plumbing in your home is accessible; you may be able to inspect your own plumbing to determine whether you have a lead service line or lead solder. Otherwise, you will most likely have to hire a plumber.
 - If you do not have a lead service line, running the water for 1 – 2 minutes at the kitchen tap should clear the lead from your household plumbing to the kitchen tap. Once you have done this, fill a container with water and store it in the refrigerator for drinking, cooking, and preparing baby formula throughout the day.
 - If you do have a lead service line, flushing times can vary based on the length of your lead service line and the plumbing configuration in your home. The length of lead service lines varies considerably. Flushing for at least 3 – 5 minutes is recommended.
- *Use cold water for drinking, cooking, and preparing baby formula.* Do not cook with or drink water from the hot water tap; lead dissolves more easily into hot water. Do not use water from the hot water tap to make baby formula.
- *Look for alternative sources or treatment of water.* You may want to consider purchasing bottled water or a water filter that is certified to remove "total lead".
- *Clean and remove any debris from faucet aerators on a regular basis.*
- *Do not boil water to remove lead. Boiling water will not reduce lead.*
- *Purchase lead-free faucets and plumbing components.*
- *Remove the entire lead service line.*
- *Test your water for lead.* Call us at: _____ to find out how to get your water tested for lead. While we do not do the testing, we can provide a list of laboratories certified to do the testing. Laboratories will send you the bottles for sample collection. Please note that we are not affiliated with any laboratory, and they will charge you a fee.
 - If test results indicate a lead level above 15 ug/L, bottled water should be used by pregnant women, breast-feeding women, young children, and formula-fed infants.