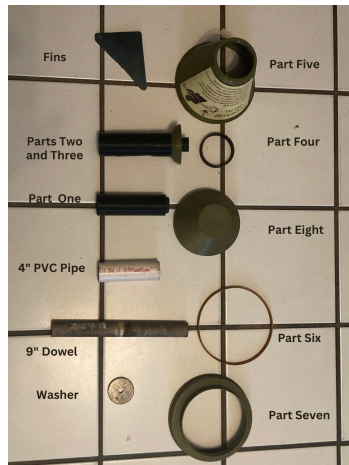


Projectile Assembly



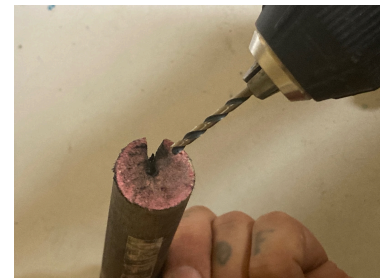
Materials Needed

- Eight printed pieces
- One 9"x1" wood dowel
- Epoxy
- Three fins per projectile (SCS.DXF File)
- Small stack of 1.5" OD washers
- Weighted steel $\frac{3}{8}$ " disk
- PVC Pipe: 1" ID, 1.3" OD, 4" length
- 6 x 0.25" sheet metal screws
- 10 x 2.5" flat head Phillips screws
- 12 x 1.25" Phillips pan screws

Assembly Steps

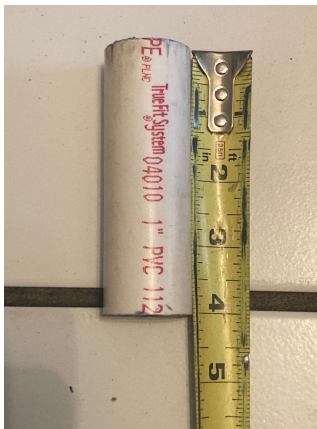
1. Prepare Dowel

- a. Drill $\frac{7}{64}$ " pilot holes on both ends of the dowel.



2. Insert PVC Tube

- a. Push the 4" PVC tube into the tail section one.



3. Fit Dowel

- a. Use a sanding drum to widen the small end of section one, allowing the 1" dowel to pass freely. Be cautious not to overheat the PLA.



4. Insert Dowel

- a. Push the wooden dowel through section one of the tail stem.



5. Add Section Two

- a. Fit printed section two over section one and the dowel.



6. Attach Part Three

- a. Attach printed part three onto the tail section.

7. Add Washer and Screws

- a. Place 10 x 2.5" Phillips screws and a 1.5" washer over section two's open end.



8. Assemble Tail

- a. Stack the 1.75" disk behind the 1.5" washers so the completed tail is almost 10" long.



9. Secure Tail

- a. Use 12 x 1.25" Phillips pan screws through the washer stacks and disk into the pilot hole in the dowel.

10. Drill Fin Holes

- a. Drill six 1/16" pilot holes for fin screws on the tail section where fins will be attached.



11. Attach Fins

- a. Using 0.25" Phillips screws, attach three fins to the bottom half of tail section one (use the Send Cut Send .DXF file for .010 spring steel fins).

12. Epoxy Parts One, Two and Three

- a. Apply epoxy to printed parts one, two, and three.



13. Assemble Above Parts (One, Two and Three) to Part Four

- a. Epoxy part five onto the remaining protruding half of part four.



14. Epoxy Large Ring

- a. Apply epoxy to the large ring (part six) and push it onto the body (part five).



15. Attach Nose Cone

- a. Epoxy the nose cone (part eight) onto the nose ring (part seven) and then onto the large ring (part six).

****ACHTUNG!!****

**Part numbers have been changed from the original .PDF files. Use
this picture for reference**

