



2020 NEW PRODUCTS

FIRST EDITION



Extron

FOX3 SYSTEMS



Introducing FOX3 Systems

4K/60 4:4:4 Video, Audio, USB, and Control over Fiber

Introducing FOX3 Systems, the industry-leading high-performance family of fiber optic extenders and matrix switchers for end-to-end distribution of 4K video, audio, control, USB, and 3D sync. FOX3 extenders feature built-in USB for KVM applications while Extron-exclusive Vector™ 4K scaling technology ensures best-in-class image quality. Delivering exceptional reliability and advanced capabilities such as audio breakaway, audio embedding/de-embedding, DMP expansion, and Dante® integration, the FOX3 Series meets the demands of any mission-critical environment.

- Supports mathematically lossless 4K/60 4:4:4 video over one fiber or uncompressed 4K/60 4:4:4 video over two fibers
- Scaling receiver models available with Extron-exclusive Vector 4K scaling technology for design flexibility and easy integration
- HDCP 2.2 compliant
- Supported HDMI 2.0 specifications include data rates up to 18 Gbps, Deep Color up to 12-bit, and 3D
- Integrates DMP expansion, local analog audio insertion and extraction, and Dante with AES67 support
- Advanced 24/7 system monitoring





Setting the New Standard in 4K Fiber Optic Distribution

Uncompromised Image Quality

Supporting data rates up to 18 Gbps, the FOX3 series extenders are designed to send uncompressed video images up to 4096x2160 at 60 Hz with 4:4:4 chroma sampling over two fibers or mathematically lossless video images over one fiber, making FOX3 ideal for mission-critical applications or any environment that requires pristine transmission of very high-resolution imagery.

USB Signal Switching and Extension

Select FOX3 extenders offer USB extension to streamline system integration in KVM – keyboard, video, and mouse applications. USB device class filtering and HID-only ports allow for tailor-made solutions in high security deployments. USB Host and Peripheral Emulation offer increased system reliability in KVM applications.

Designed for Full Audio System Integration

FOX3 Matrix Switchers provide leading-edge audio functionality, including audio switching and breakaway, stereo audio embedding and de-embedding, a DMP expansion port, two Dante® ports, and local analog audio inputs and outputs. The matrix switcher can embed any selected analog input audio signals onto any output, and any two-channel PCM audio signal can be extracted and independently routed.

Centralized Enterprise Level Control

FOX3 Matrix Switchers enable the insertion and extraction of RS-232 control data from the Ethernet port to the transmitters and receivers over the fiber optic cable. This allows complete centralized control of endpoints and attached devices without needing additional cabling.

To learn more, visit extron.com/FOX3



FOX3
SYSTEMS

FOX3 Fiber Optic Transmitters & Receivers

Extron FOX3 Series fiber optic extenders provide long haul transmission of HDCP-compliant HDMI video, USB, audio, control, and 3D sync signals over fiber optic cable. Engineered for exceptional high-resolution image performance, they use Extron all-digital technology to deliver perfect pixel-for-pixel, uncompressed transmission of images up to 4K/60 @ 4:4:4 over two fibers or mathematically lossless 4K/60 @ 4:4:4 video over one fiber. Designed specifically for AV and KVM systems, FOX3 extenders also include many integrator-friendly features such as Key Minder®, EDID Minder®, audio embedding and de-embedding, Ethernet monitoring and control, audio gain and attenuation, and real-time system monitoring.

Key Features

- Extend HDMI video, USB, stereo audio, RS-232 control, IR control, and 3D sync signals over fiber optic cabling
- Supports mathematically lossless 4K video up to 4096x2160 at 60 Hz with 4:4:4 chroma sampling over one fiber
- Supports uncompressed 4K video up to 4096x2160 at 60 Hz with 4:4:4 chroma sampling over two fibers
- HDCP 2.2 compliant
- Key Minder continuously verifies HDCP compliance for quick, reliable switching
- Transmitters feature a buffered HDMI input loop-through for a local display
- Audio embedding converts analog audio to digital HDMI audio at the transmitter
- HDMI audio de-embedding with analog stereo outputs at the receiver
- Ethernet insertion of control signals at the matrix and control signal extension to remote endpoints provides a complete enterprise-level control infrastructure

FIBER OPTICS

FOX3 T 301

Fiber Optic Transmitter for HDMI, USB, Audio, Control, and 3D Sync

UNIQUE FEATURES

- Transmits HDMI video, USB, stereo audio, RS-232 control, IR control, and 3D sync signals over fiber optic cabling
- Supported HDMI 2.0 specification features include data rates up to 18 Gbps, Deep Color up to 12-bit, and 3D
- Supports USB 2.0 to 1.0 devices and USB 3.0 devices that can operate at USB 2.0 data rates of up to 480 Mbps
- Device class filtering on USB HID port restricts the range of device types to HID and smart card readers



FOX3 T 301 MM

Model	Version Description	Part Number
FOX3 T 301 MM	Lossless 4K/60 Transmitter - Multimode	60-1522-11
FOX3 T 301 SM	Lossless 4K/60 Transmitter - Singlemode	60-1522-12
FOX3 T 301 MM	Uncompressed 4K/60 Transmitter - Multimode	60-1522-13
FOX3 T 301 SM	Uncompressed 4K/60 Transmitter - Singlemode	60-1522-14

FOX3 R 301

Fiber Optic Receiver for HDMI, USB, Audio, Control, and 3D Sync

UNIQUE FEATURES

- Receives HDMI video, USB, stereo audio, RS-232 control, IR control, and 3D sync signals over fiber optic cabling
- Supported HDMI 2.0 specification features include data rates up to 18 Gbps, Deep Color up to 12-bit, and 3D
- Supports USB 2.0 to 1.0 devices and USB 3.0 devices that can operate at USB 2.0 data rates of up to 480 Mbps
- Device class filtering on USB HID port restricts the range of device types to HID and smart card readers



FOX3 R 301 MM

Model	Version Description	Part Number
FOX3 R 301 MM	Lossless 4K/60 Receiver - Multimode	60-1522-21
FOX3 R 301 SM	Lossless 4K/60 Receiver - Singlemode	60-1522-22
FOX3 R 301 MM	Uncompressed 4K/60 Receiver - Multimode	60-1522-23
FOX3 R 301 SM	Uncompressed 4K/60 Receiver - Singlemode	60-1522-24

FOX3 SR 301

Fiber Optic Scaling Receiver for HDMI, USB, Audio, Control, and 3D Sync

UNIQUE FEATURES

- Receives fiber optic signals from FOX3 Series transmitters and provides scaled HDMI video, USB, stereo audio, RS-232 control, IR control, and 3D sync signals
- High-performance scaler provides selectable output resolutions up to 4096x2160 at 60 Hz with 4:4:4 chroma sampling
- Supported HDMI 2.0 specification features include data rates up to 18 Gbps, Deep Color up to 12-bit, and 3D
- Supports USB 2.0 to 1.0 devices and USB 3.0 devices that can operate at USB 2.0 data rates of up to 480 Mbps



FOX3 SR 301 MM

Model	Version Description	Part Number
FOX3 SR 301 MM	Lossless 4K/60 Scaling Receiver - Multimode	60-1749-21
FOX3 SR 301 SM	Lossless 4K/60 Scaling Receiver - Singlemode	60-1749-22
FOX3 SR 301 MM	Uncompressed 4K/60 Scaling Receiver - Multimode	60-1749-23
FOX3 SR 301 SM	Uncompressed 4K/60 Scaling Receiver - Singlemode	60-1749-24

For updated product availability, go to www.extron.com

FIBER OPTICS

FOX3 T 311

Fiber Optic Transmitter for HDMI, USB HID, Audio, Control, and 3D Sync

UNIQUE FEATURES

- Transmits HDMI video, USB HID, stereo audio, RS-232 control, IR control, and 3D sync signals over fiber optic cabling
- Supported HDMI 2.0 specification features include data rates up to 18 Gbps, Deep Color up to 12-bit, and 3D
- Device class filtering on USB HID port restricts the range of device types to HID and smart card readers



FOX3 T 311 MM

Model	Version Description	Part Number
FOX3 T 311 MM	Lossless 4K/60 Transmitter - Multimode	60-1523-11
FOX3 T 311 SM	Lossless 4K/60 Transmitter - Singlemode	60-1523-12
FOX3 T 311 MM	Uncompressed 4K/60 Transmitter - Multimode	60-1523-13
FOX3 T 311 SM	Uncompressed 4K/60 Transmitter - Singlemode	60-1523-14

FOX3 R 311

Fiber Optic Receiver for HDMI, USB HID, Audio, Control, and 3D Sync

UNIQUE FEATURES

- Receives HDMI video, USB HID, stereo audio, RS-232 control, IR control, and 3D sync signals over fiber optic cabling
- Supported HDMI 2.0 specification features include data rates up to 18 Gbps, Deep Color up to 12-bit, and 3D
- Device class filtering on USB HID port restricts the range of device types to HID and smart card readers



FOX3 R 311 MM

Model	Version Description	Part Number
FOX3 R 311 MM	Lossless 4K/60 Receiver - Multimode	60-1523-21
FOX3 R 311 SM	Lossless 4K/60 Receiver - Singlemode	60-1523-22
FOX3 R 311 MM	Uncompressed 4K/60 Receiver - Multimode	60-1523-23
FOX3 R 311 SM	Uncompressed 4K/60 Receiver - Singlemode	60-1523-24

FOX3 SR 311

Fiber Optic Scaling Receiver for HDMI, USB HID, Audio, Control, and 3D Sync

UNIQUE FEATURES

- Receives fiber optic signals from FOX3 Series transmitters and provides scaled HDMI video, USB HID, stereo audio, RS-232 control, IR control, and 3D sync signals
- High-performance scaler provides selectable output resolutions up to 4096x2160 at 60 Hz with 4:4:4 chroma sampling
- Supported HDMI 2.0 specification features include data rates up to 18 Gbps, Deep Color up to 12-bit, and 3D
- Device class filtering on USB HID port restricts the range of device types to HID and smart card readers



FOX3 SR 311 MM

Model	Version Description	Part Number
FOX3 SR 311 MM	Lossless 4K/60 Scaling Receiver - Multimode	60-1732-21
FOX3 SR 311 SM	Lossless 4K/60 Scaling Receiver - Singlemode	60-1732-22
FOX3 SR 311 MM	Uncompressed 4K/60 Scaling Receiver - Multimode	60-1732-23
FOX3 SR 311 SM	Uncompressed 4K/60 Scaling Receiver - Singlemode	60-1732-24

FIBER OPTICS

FOX3 T 201

Fiber Optic Transmitter for HDMI, Audio, and Control

UNIQUE FEATURES

- Transmits HDMI video, stereo audio, RS-232 control, and IR control signals over fiber optic cabling
- Supported HDMI 2.0 specification features include data rates up to 18 Gbps and Deep Color up to 12-bit
- Supports PoE+
- Low-profile unit fits under a table or behind a display



FOX3 T 201 MM

Model	Version Description	Part Number
FOX3 T 201 MM	Lossless 4K/60 Transmitter - Multimode	60-1600-11
FOX3 T 201 SM	Lossless 4K/60 Transmitter - Singlemode	60-1600-12
FOX3 T 201 MM	Uncompressed 4K/60 Transmitter - Multimode	60-1600-13
FOX3 T 201 SM	Uncompressed 4K/60 Transmitter - Singlemode	60-1600-14

FOX3 SR 201

Fiber Optic Scaling Receiver for HDMI, Audio, and Control

UNIQUE FEATURES

- Receives fiber optic signals from FOX3 Series transmitters and provides scaled HDMI video, stereo audio, RS-232 control, and IR control signals
- High-performance scaler provides selectable output resolutions up to 4096x2160 at 60 Hz with 4:4:4 chroma sampling
- Supported HDMI 2.0 specification features include data rates up to 18 Gbps and Deep Color up to 12-bit
- Key Minder continuously verifies HDCP compliance for quick, reliable switching
- HDCP Visual Confirmation
- Supports PoE+
- Low-profile unit fits under a table or behind a display



FOX3 SR 201 MM

Model	Version Description	Part Number
FOX3 SR 201 MM	Lossless 4K/60 Scaling Receiver - Multimode	60-1600-21
FOX3 SR 201 SM	Lossless 4K/60 Scaling Receiver - Singlemode	60-1600-22
FOX3 SR 201 MM	Uncompressed 4K/60 Scaling Receiver - Multimode	60-1600-23
FOX3 SR 201 SM	Uncompressed 4K/60 Scaling Receiver - Singlemode	60-1600-24

FOX3 Transmitters

	HDMI, Audio & Control	USB	USB HID	3D Sync	HDMI Input Loop-Through	Audio Embedding	Vector 4K Scaling	PoE+
FOX3 T 201	•				•	•		•
FOX3 T 301	•	•	•	•	•	•		
FOX3 T 311	•		•	•	•	•		

FOX3 Receivers

FOX3 SR 201	•						•	•
FOX3 R 301	•	•	•	•				
FOX3 SR 301	•	•	•	•			•	
FOX3 R 311	•		•	•				
FOX3 SR 311	•		•	•			•	

For updated product availability, go to www.extron.com



FOX3
SYSTEMS

FOX3 Fiber Optic Matrix Switchers

Extron FOX3 Matrix Switchers provide high-performance switching of 4K/60 video, audio, USB, control, and 3D sync over fiber optic cable. Expandable from 8x8 up to 320x320, these modular matrix switchers also feature RS-232 insertion from the Ethernet port, extending bidirectional control to any FOX3 endpoint. The Ethernet port supports SSH protocol, ensuring communication between the control system and the matrix is encrypted. Dante, DMP Expansion, and analog audio I/O ports enable audio embedding and de-embedding. Equipped with many additional integrator-friendly features, such as redundant hot-swappable power supplies and system monitoring, FOX3 Matrix Switchers deliver highly reliable, enterprise-wide switching of fiber optic AV, USB, and control for mission-critical environments.

Key Features

- I/O sizes from 8x8 to 320x320
- Switches 4K/60 video, audio, USB, control, and 3D sync over fiber optic cable
- Compatible with all Extron FOX3 Series transmitters and receivers for an enterprise-wide fiber optic distribution system
- Supports mathematically lossless 4K video up to 4096x2160 at 60 Hz with 4:4:4 chroma sampling over one fiber
- Supports uncompressed 4K video up to 4096x2160 at 60 Hz with 4:4:4 chroma sampling over two fibers
- Analog audio insertion and extraction
- Digital audio expansion port provides a connection to an Extron DMP 128 Plus processor for audio system scalability
- Dante® audio network interface, DMP expansion port, and analog audio inputs and outputs
- Secure partitioning segregates sources and destinations in a secure environment
- Priority switching prevents unauthorized access to sensitive data in a secure environment
- Dual redundant and hot-swappable power supplies
- J1TC Certified
- Ethernet insertion of control signals at the matrix and control signal extension to remote endpoints provides a complete enterprise-level control infrastructure

FIBER OPTICS

FOX3 Matrix 24x

Modular Fiber Optic Matrix Switcher from 8x8 to 24x24

UNIQUE FEATURES

- I/O sizes from 8x8 to 24x24
- Switches 4K/60 video, audio, USB, control, and 3D sync over fiber optic cable
- Compatible with all Extron FOX3 Series transmitters and receivers
- Dante® audio network interface, DMP expansion port, and analog audio inputs and outputs
- RS-232 insertion from the Ethernet control port
- Multimode and Singlemode I/O boards available

Model	Version Description	Part Number
FOX3 Matrix 24x no FPC 8io MM	Configured Matrix - 8x8 Multimode	60-1716-04
FOX3 Matrix 24x no FPC 8io SM	Configured Matrix - 8x8 Singlemode	60-1716-14
FOX3 Matrix 24x no FPC 16io MM	Configured Matrix - 16x16 Multimode	60-1716-05
FOX3 Matrix 24x no FPC 16io SM	Configured Matrix - 16x16 Singlemode	60-1716-15
FOX3 Matrix 24x no FPC 24io MM	Configured Matrix - 24x24 Multimode	60-1716-06
FOX3 Matrix 24x no FPC 24io SM	Configured Matrix - 24x24 Singlemode	60-1716-16



FOX3 Matrix 24x no FPC 24io SM

FOX3 Matrix 40x

Modular Fiber Optic Matrix Switcher from 8x8 to 40x40

UNIQUE FEATURES

- I/O sizes from 8x8 to 40x40
- Switches 4K/60 video, audio, USB, control, and 3D sync over fiber optic cable
- Compatible with all Extron FOX3 Series transmitters and receivers
- Dante® audio network interface, DMP expansion port, and analog audio inputs and outputs
- RS-232 insertion from the Ethernet control port
- Multimode and Singlemode I/O boards available

Model	Version Description	Part Number
FOX3 Matrix 40x no FPC	FOX3 Matrix 40x Frame no FPC	60-1576-02
FOX3 I/O 88 MM	8x8 I/O Board - Multimode	70-1107-01
FOX3 I/O 88 SM	8x8 I/O Board - Singlemode	70-1107-02



FOX3 Matrix 40x no FPC

FOX3 Matrix 80x

Modular Fiber Optic Matrix Switcher from 8x8 to 80x80

UNIQUE FEATURES

- I/O sizes from 8x8 to 80x80
- Switches 4K/60 video, audio, USB, control, and 3D sync over fiber optic cable
- Compatible with all Extron FOX3 Series transmitters and receivers
- Dante® audio network interface, DMP expansion port, and analog audio inputs and outputs
- RS-232 insertion from the Ethernet control port
- Multimode and Singlemode I/O boards available

Model	Version Description	Part Number
FOX3 Matrix 80x no FPC	FOX3 Matrix 80x Frame no FPC	60-1553-02
FOX3 I/O 88 MM	8x8 I/O Board - Multimode	70-1107-01
FOX3 I/O 88 SM	8x8 I/O Board - Singlemode	70-1107-02



FOX3 Matrix 80x no FPC

For updated product availability, go to www.extron.com

FIBER OPTICS

FOX3 Matrix 160x
Modular Fiber Optic Matrix Switcher from 8x8 to 160x160

UNIQUE FEATURES

- I/O sizes from 8x8 to 160x160
- Switches 4K/60 video, audio, USB, control, and 3D sync over fiber optic cable
- Compatible with all Extron FOX3 Series transmitters and receivers
- Dante® audio network interface, DMP expansion port, and analog audio inputs and outputs
- RS-232 insertion from the Ethernet control port
- Multimode and Singlemode I/O boards available



FOX3 Matrix 160x no FPC

Model	Version Description	Part Number
FOX3 Matrix 160x no FPC	FOX3 Matrix 160x Frame no FPC.....	60-1577-02
FOX3 I/O 88 MM	8x8 I/O Board - Multimode.....	70-1107-01
FOX3 I/O 88 SM	8x8 I/O Board - Singlemode.....	70-1107-02

FOX3 Matrix 320x
Modular Fiber Optic Matrix Switcher from 8x8 to 320x320

UNIQUE FEATURES

- I/O sizes from 8x8 to 320x320
- Switches 4K/60 video, audio, USB, control, and 3D sync over fiber optic cable
- Compatible with all Extron FOX3 Series transmitters and receivers
- Dante® audio network interface, DMP expansion port, and analog audio inputs and outputs
- RS-232 insertion from the Ethernet control port
- Multimode and Singlemode I/O boards available



FOX3 Matrix 320x no FPC

Model	Version Description	Part Number
FOX3 Matrix 320x no FPC	FOX3 Matrix 320x Frame no FPC.....	60-1578-02
FOX3 I/O 88 MM	8x8 I/O Board - Multimode.....	70-1107-01
FOX3 I/O 88 SM	8x8 I/O Board - Singlemode.....	70-1107-02

NAV PRO AVoIP

- Pixel-Perfect Video
- Ultra-Low Latency
- Low Bitrates



VECTOR 4K
SCALING

18 Gbps
4K/60 4:4:4

4K UHD

AES67

NAV Pro AV over IP

The Only Solution Designed for the Enterprise Network

NAV™ is the only no-compromise Pro AV over IP solution for distribution and switching of ultra-low latency, visually lossless video, audio, and USB 2.0 signals over Ethernet networks. Utilizing Extron's patented PURE3® codec, it delivers groundbreaking performance with visually lossless video over IP at resolutions up to 4K @ 60 Hz with 4:4:4 chroma sampling. PURE3's Intelligent Selective Streaming - ISS - leverages low motion content to achieve extremely low bitrates while maintaining visually lossless performance. The NAV Series is the only solution that offers both 1 Gbps and 10 Gbps encoders and decoders with compatibility across both systems.

Features

- PURE3 Intelligent Selective Streaming achieves low bit rates with low motion content while maintaining visually lossless performance
- Streams video and audio over standard Ethernet networks for flexible system design and distribution
- Supports HDMI 2.0 at resolutions up to 4K/60 @ 4:4:4
- Ultra-low latency with visually lossless compression using the patented Extron PURE3® codec
- Interoperable across 1 Gbps and 10 Gbps endpoints
- Supports the AES67 audio over IP standard, providing compatibility with Extron and third-party audio DSP processors
- Enhanced security with SRTP - Secure Real Time Transport Protocol
- 802.1X port-based Network Access Control for device authentication
- Microsoft® Active Directory integration for user management
- Multiple encoders and decoders can be deployed as an IP-based video and audio matrix

To learn more, visit extron.com/NAV

NAV PRO AV OVER IP

NAV 10E 101
10G Pro AV over IP Encoder - HDMI

The NAV 10E 101 is a Pro AV over IP encoder that streams ultra-low latency, visually lossless video and audio signals over 10 Gbps Ethernet networks at efficient bit rates. Adjustable bitrate settings facilitate transmission over 10 Gbps networks and compatibility with NAV™ 1 Gbps endpoints, increasing scalability for large deployments. The NAV 10E 101 is ideal for simulation, command and control, medical diagnostics applications, or any installation where reliable, visually lossless AV over IP video distribution is desired.

- FEATURES**
- Encodes and streams video and audio over 10 Gbps Ethernet networks
 - Supports HDMI 2.0 at resolutions up to 4K/60 @ 4:4:4
 - PURE3® Codec
 - PURE3 Intelligent Selective Streaming
 - Interoperable with 1 Gbps NAV™ endpoints
 - Ultra-low latency with visually lossless compression
 - AES67 audio support
 - Industry-standard LC connectors for fiber optic connectivity provide robust, reliable transmission with inherent immunity to outside interference

Model	Version Description	Part Number
NAV 10E 101	10G HDMI Encoder - Multimode	60-1572-15
NAV 10E 101	10G HDMI Encoder - Singlemode	60-1572-16



NAV 10E 101 - Singlemode



NAV 10E 501
10G Pro AV over IP Encoder - HDMI, Ethernet, and USB

The NAV 10E 501 is a Pro AV over IP encoder that streams ultra-low latency, visually lossless video, audio, Ethernet, and USB 2.0 signals over 10 Gbps Ethernet networks at efficient bit rates. Adjustable bitrate settings facilitate compatibility with NAV™ 1 Gbps endpoints, increasing scalability for large deployments. With built-in USB 2.0 extension, the NAV 10E 501 can remotely connect to peripheral USB-enabled devices. The 1 Gbps Ethernet expansion port facilitates remote LAN connectivity and control of attached IP-enabled Ethernet-enabled devices.

- FEATURES**
- Encodes and streams video, audio, Ethernet, and USB signals over 10 Gbps Ethernet networks
 - Supports HDMI 2.0 at resolutions up to 4K/60 @ 4:4:4
 - PURE3® Codec
 - PURE3 Intelligent Selective Streaming
 - Interoperable with 1 Gbps NAV™ endpoints
 - Ultra-low latency with visually lossless compression
 - AES67 audio support
 - Industry-standard LC connectors for fiber optic connectivity provide robust, reliable transmission with inherent immunity to outside interference

Model	Version Description	Part Number
NAV 10E 501	10G HDMI, Ethernet, USB Encoder - Multimode	60-1572-01
NAV 10E 501	10G HDMI, Ethernet, USB Encoder - Singlemode	60-1572-02



NAV 10E 501 - Multimode



NAV PRO AV OVER IP

NAV E 101

1G Pro AV over IP Encoder - HDMI

The NAV E 101 is a Pro AV over IP encoder that streams ultra-low latency, high quality video and audio signals over 1 Gbps Ethernet networks at extremely low bit rates. It is fully compatible with NAV™ 10 Gbps endpoints, increasing scalability for large deployments. Using a standard 1000Base-T 1 Gbps copper Ethernet infrastructure, the NAV E 101 facilitates flexible system design and cost-effective streaming over large distances, and PoE+ powering eliminates the need for external power supplies.

FEATURES

- Encodes and streams video and audio over 1 Gbps Ethernet networks
- Supports HDMI 2.0 at resolutions up to 4K/60 @ 4:4:4
- PURE3® Codec
- PURE3 Intelligent Selective Streaming
- Interoperable with 10 Gbps NAV™ endpoints
- Ultra-low latency with high quality video
- AES67 audio support
- PoE+ compatibility eliminates the need for a local power supply



NAV
PRO AVoIP

Model	Version Description	Part Number
NAV E 101	1G HDMI Encoder	60-1525-12

NAV E 501

1G Pro AV over IP Encoder - HDMI, Ethernet, and USB

The NAV E 501 is a Pro AV over IP encoder that streams ultra-low latency, high quality video, audio, Ethernet, and USB 2.0 signals over 1 Gbps Ethernet networks at extremely low bit rates. It is fully compatible with NAV™ 10 Gbps endpoints, increasing scalability for large deployments. With built-in USB 2.0 extension, the NAV E 501 can remotely connect to peripheral USB-enabled devices. The 100 Mbps Ethernet expansion port facilitates remote LAN connectivity and control of attached IP-enabled Ethernet-enabled devices. Using standard 1000Base-T 1 Gbps copper Ethernet infrastructure, the NAV E 501 facilitates flexible system design and cost-effective streaming over large distances. PoE+ powering eliminates the need for external power supplies.

FEATURES

- Encodes and streams video, audio, Ethernet, and USB signals over 1 Gbps Ethernet networks
- Supports HDMI 2.0 at resolutions up to 4K/60 @ 4:4:4
- PURE3® Codec
- PURE3 Intelligent Selective Streaming
- Interoperable with 10 Gbps NAV™ endpoints
- Ultra-low latency with high quality video
- AES67 audio support
- PoE+ compatibility eliminates the need for a local power supply



NAV
PRO AVoIP

Model	Version Description	Part Number
NAV E 501	1G HDMI, Ethernet, USB Encoder	60-1525-01

For updated product availability, go to www.extron.com

Europe
+31.33.453.4040 / +800.3987.6673
+31.33.453.4050 FAX

Middle East
+971.4.299.1800
+971.4.299.1880 FAX

Asia
+65.6383.4400 / +800.7339.8766
+65.6383.4664 FAX

China
+86.21.3760.1568 / +4000.398766
+86.21.3760.1566 FAX

Japan
+81.3.3511.7655
+81.3.3511.7656 FAX

Extron

NAV PRO AV OVER IP

NAV 10SD 101
10G Pro AV over IP Scaling Decoder - HDMI

The NAV 10SD 101 is a Pro AV over IP scaling decoder that decodes and scales ultra-low latency, visually lossless video and audio signals over 10 Gbps Ethernet networks at efficient bit rates. It is fully compatible with NAV™ 1 Gbps endpoints, increasing scalability for large deployments. With its integrated Extron Vector™ 4K scaling technology, the NAV 10SD 101 delivers best-in-class image upscaling and downscaling using Extron's exclusive, high-precision processing algorithms for exceptional scaling performance.

- FEATURES**
- Decodes video and audio from 10 Gbps Ethernet networks
 - Supports HDMI 2.0 at resolutions up to 4K/60 @ 4:4:4
 - PURE3® Codec
 - PURE3 Intelligent Selective Streaming
 - Interoperable with 1 Gbps NAV™ endpoints
 - Ultra-low latency with visually lossless compression
 - Advanced Extron Vector™ 4K scaling technology
 - AES67 audio support
 - Industry-standard LC connectors for fiber optic connectivity provide robust, reliable transmission with inherent immunity to outside interference

Model	Version Description	Part Number
NAV 10SD 101	10G HDMI Scaling Decoder - Multimode.....	60-1572-19
NAV 10SD 101	10G HDMI Scaling Decoder - Singlemode.....	60-1572-20



NAV 10SD 501 - Multimode



NAV 10SD 501
10G Pro AV over IP Scaling Decoder - HDMI, Ethernet, and USB

The NAV 10SD 501 is a Pro AV over IP scaling decoder that decodes and scales ultra-low latency, visually lossless video, audio, Ethernet, and USB 2.0 signals over 10 Gbps Ethernet networks at efficient bit rates. It is fully compatible with NAV 1 Gbps endpoints, increasing scalability for large deployments. With built-in USB 2.0 extension, the NAV™ 10SD 501 can remotely connect to peripheral USB-enabled devices. The 1 Gbps Ethernet expansion port facilitates remote LAN connectivity and control of attached IP-enabled Ethernet-enabled devices. With its integrated Extron Vector 4K scaling technology, the NAV 10SD 501 delivers best-in-class image upscaling and downscaling using Extron's exclusive, high-precision processing algorithms for exceptional scaling performance.

- FEATURES**
- Decodes video, audio, Ethernet, and USB signals from 10 Gbps Ethernet networks
 - Supports HDMI 2.0 at resolutions up to 4K/60 @ 4:4:4
 - PURE3® Codec
 - PURE3 Intelligent Selective Streaming
 - Interoperable with 1 Gbps NAV™ endpoints
 - Ultra-low latency with visually lossless compression
 - Advanced Extron Vector™ 4K scaling technology
 - AES67 audio support
 - Industry-standard LC connectors for fiber optic connectivity provide robust, reliable transmission with inherent immunity to outside interference

Model	Version Description	Part Number
NAV 10SD 501	10G HDMI, Ethernet, USB Scaling Decoder-Multimode.....	60-1572-07
NAV 10SD 501	10G HDMI, Ethernet, USB Scaling Decoder-Singlemode.....	60-1572-08



NAV 10SD 501 - Multimode



NAV PRO AV OVER IP

NAV SD 101

1G Pro AV over IP Scaling Decoder - HDMI

The NAV SD 101 is a Pro AV over IP scaling decoder that decodes and scales ultra-low latency, high quality video and audio signals over 1 Gbps Ethernet networks at extremely low bit rates. It is fully compatible with NAV™ 10 Gbps endpoints, increasing scalability for large deployments. With its integrated Extron Vector™ 4K scaling technology, the NAV SD 101 delivers best-in-class image upscaling and downscaling using Extron's exclusive, high-precision processing algorithms for exceptional scaling performance. Using a standard 1000Base-T 1 Gbps copper Ethernet infrastructure, the NAV SD 101 facilitates flexible system design and cost-effective streaming over large distances, and PoE+ powering eliminates the need for external power supplies.

FEATURES

- Decodes video and audio from 1 Gbps Ethernet networks
- Supports HDMI 2.0 at resolutions up to 4K/60 @ 4:4:4
- PURE3® Codec
- PURE3 Intelligent Selective Streaming
- Interoperable with 10 Gbps NAV™ endpoints
- Ultra-low latency with high quality video
- Advanced Extron Vector™ 4K scaling technology
- AES67 audio support
- PoE+ compatibility eliminates the need for a local power supply



NAV
PRO AVoIP

Model	Version Description	Part Number
NAV SD 101	1G HDMI Scaling Decoder	60-1525-14

NAV SD 501

1G Pro AV over IP Scaling Decoder - HDMI, Ethernet, and USB

The NAV SD 501 is a Pro AV over IP scaling decoder that decodes and scales ultra-low latency, high quality video, audio, Ethernet, and USB 2.0 signals over 1 Gbps Ethernet networks at extremely low bit rates. It is fully compatible with NAV 10 Gbps endpoints, increasing scalability for large deployments. With built-in USB 2.0 extension, the NAV SD 501 can remotely connect to peripheral USB-enabled devices. The 100 Mbps Ethernet expansion port facilitates remote LAN connectivity and control of attached IP-enabled Ethernet-enabled devices. With its integrated Extron Vector 4K scaling technology, the NAV SD 501 delivers best-in-class image upscaling and downscaling using Extron's exclusive, high-precision processing algorithms for exceptional scaling performance. Using a standard 1000Base-T 1 Gbps copper Ethernet infrastructure, the NAV SD 101 facilitates flexible system design and cost-effective streaming over large distances, and PoE+ powering eliminates the need for external power supplies.

FEATURES

- Decodes video, audio, Ethernet, and USB signals from 1 Gbps Ethernet networks
- Supports HDMI 2.0 at resolutions up to 4K/60 @ 4:4:4
- PURE3® Codec
- PURE3 Intelligent Selective Streaming
- Interoperable with 10 Gbps NAV™ endpoints
- Ultra-low latency with high quality video
- Advanced Extron Vector™ 4K scaling technology
- AES67 audio support
- PoE+ compatibility eliminates the need for a local power supply



NAV
PRO AVoIP

Model	Version Description	Part Number
NAV SD 501	1G HDMI, Ethernet, USB Scaling Decoder	60-1525-03

For updated product availability, go to www.extron.com

Europe
+31.33.453.4040 / +800.3987.6673
+31.33.453.4050 FAX

Middle East
+971.4.299.1800
+971.4.299.1880 FAX

Asia
+65.6383.4400 / +800.7339.8766
+65.6383.4664 FAX

China
+86.21.3760.1568 / +4000.398766
+86.21.3760.1566 FAX

Japan
+81.3.3511.7655
+81.3.3511.7656 FAX

Extron

NAV PRO AV OVER IP

NAVigator
Pro AV over IP System Manager

NAVigator is a hardware appliance for secure management, configuration, and control of NAV™ Pro AV over IP systems. Use the user-friendly web-based NAV System Manager to configure, monitor and control, backup and restore, run diagnostics, and troubleshoot. An entry level NAVigator system supports 16 endpoints and can expand with LinkLicense to support 48, 96, or 240 devices. Multiple NAVigator units working together can support thousands of endpoints. Two isolated, independent LAN ports facilitate control from a secondary network, enabling flexible design with enhanced security, and eliminating AV traffic on the corporate network. With Extron Pro Series control integration, the NAVigator acts as a centralized communication bridge for secure control of all attached devices. The NAVigator System Manager can be PoE powered over the network.

- FEATURES**
- Securely manages, configures, and controls NAV™ Pro AV over IP systems
 - Each unit supports up to 240 NAV endpoints
 - Intuitive, web-based user interface for ease of use
 - Manages simultaneous configuration of multiple NAV devices
 - Secure encrypted communication between all endpoints
 - Power over Ethernet, or PoE, eliminates the need for a local power supply



NAVigator

NAV
PRO AVoIP

Model	Version Description	Part Number
NAVigator	Entry Level Version for 16 Endpoints	60-1534-01
LinkLicense	NAVigator 48 Endpoints Upgrade	79-2551-02
LinkLicense	NAVigator 96 Endpoints Upgrade	79-2551-03
LinkLicense	NAVigator 240 Endpoints Upgrade	79-2551-04

COLLABORATION

SM Series USBC SM
Show Me Cable for TeamWork Collaboration Systems

The Extron SM Series Show Me® cables provide the user interface for HDMI, DisplayPort, Mini DisplayPort, USB-C, or VGA sources in an Extron TeamWork® Collaboration System. Operation is simple and convenient: Connect the Show Me cable to your source device and press the Share button to share your content on the main presentation display. The cable meets Section 508 accessibility standards and is certified for use with AVEdge™ and Cable Cubby® enclosures for discreet, convenient access.

- FEATURES**
- Provides the user interface for digital or analog signals in a TeamWork® collaboration system
 - **NEW** Now supports USB-C sources along with HDMI, DisplayPort, Mini DisplayPort, and VGA source connections
 - Supports computer and video signals up to 4096x2160 @ 60 Hz
 - Share button lights as it switches the connected source to the main presentation display
 - Available in 6' (1.8 m) and 12' (3.6 m) lengths
 - 24" (60 cm) control/tally pigtail for ease of installation
 - Certified for use with AVEdge and Cable Cubby enclosures

Model	Version Description	Part Number
USBC-HDMI SM	USB-C to HDMI SM Cable, 6' (1.8m)	26-733-06
USBC-HDMI SM	USB-C to HDMI SM Cable, 12' (3.6m)	26-733-12
USBC-DP SM	USB-C to DP SM Cable, 6' (1.8m)	26-734-06
USBC-DP SM	USB-C to DP SM Cable, 12' (3.6m)	26-734-12



NOW SHIPPING

WIRELESS

ShareLink Pro 500

Wired and Wireless Presentation Gateway

The ShareLink® Pro 500 is a Wired and Wireless Presentation Gateway that enables anyone to present content from computers, tablets, or smartphones on a display for easy cost-effective collaboration. It features advanced technology that supports simultaneous display of up to four devices, including an HDMI-connected device. The HDMI input supports wired devices such as a signage player or another AV source. The ShareLink Pro 500 has collaboration and moderator modes that facilitate both open and controlled collaboration environments. When used with Extron GVE - GlobalViewer Enterprise software, multiple units can be managed across an enterprise or campus. ShareLink Pro's professional capabilities provide easy cost-effective integration of AV and mobile devices into huddle, meeting, and collaboration spaces.

FEATURES

- Wirelessly share content from mobile devices
- Provides full screen mirroring for all devices
- Wired and wireless sources can collaborate simultaneously
- Supports Mac® and Windows® computers as well as Apple® and Android™ tablets and smartphones
- Dedicated app provides consistent user experience across platforms
- View up to four pieces of content simultaneously from any connected user



NOW SHIPPING

Model	Version Description	Part Number
ShareLink Pro 500	Wired and Wireless Presentation Gateway	60-1877-01

ShareLink Pro 1000

Wired and Wireless Presentation System

The ShareLink® Pro 1000 is a 4K Wired and Wireless Presentation System that enables anyone to present content from computers, tablets, or smartphones on a display for easy collaboration. It supports simultaneous display of up to four devices including an HDMI-connected device. The HDMI input supports wired devices, including TeamWork Show Me cables for easy source selection. The ShareLink Pro 1000 has collaboration and moderator modes that facilitate both open and controlled collaboration environments, as well as dual Ethernet ports for more secure environments. When used with Extron GVE - GlobalViewer Enterprise software, multiple units can be managed across an enterprise or campus. ShareLink Pro's professional capabilities provide easy integration of AV and mobile devices into huddle, meeting and collaboration spaces.

FEATURES

- Wirelessly share content from mobile devices
- Provides full screen mirroring for all devices
- Wired and wireless sources can collaborate simultaneously
- Supports Mac® and Windows® computers as well as Apple® and Android™ tablets and smartphones
- **NEW** Extron ShareLink Pro macOS app
- HDMI output supports computer and video resolutions up to 4K
- View up to four pieces of content simultaneously from any connected user
- Dual Ethernet ports segment guest and private users for secure collaboration



NOW SHIPPING

Model	Version Description	Part Number
ShareLink Pro 1000	Wired and Wireless Presentation System.....	60-1679-01

ShareLink Pro Feature Comparison

	ShareLink Pro 1000	ShareLink Pro 500
Max Output Resolution*	4K	1080p
Ethernet Ports	Dual	Single
Display Control Options	RS-232/CEC	CEC
TeamWork Show Me Support	●	
Contact/Tally Control	●	

*When sharing content via software app

For updated product availability, go to www.extron.com

Europe
+31.33.453.4040 / +800.3987.6673
+31.33.453.4050 FAX

Middle East
+971.4.299.1800
+971.4.299.1880 FAX

Asia
+65.6383.4400 / +800.7339.8766
+65.6383.4664 FAX

China
+86.21.3760.1568 / +4000.398766
+86.21.3760.1566 FAX

Japan
+81.3.3511.7655
+81.3.3511.7656 FAX

Extron

IPCP Pro xi Series



Our Most Powerful AV Control Processors

As AV systems grow in size and complexity, control systems must meet every demand with fast, dependable performance. At the core of these control systems, our new IPCP Pro xi Series control processors deliver the most powerful and versatile performance standards to date. With up to four times more memory and significantly-enhanced processing power for increased deployment speeds and improved runtime functionality, this new series is designed to excel in even the most demanding AV applications. In addition to increases in performance, these new processors feature advanced security standards and Gigabit Ethernet, which ensures compatibility with multiple TouchLink Pro touchpanels and Network Button Panels using a standard network infrastructure. The new IPCP Pro xi Series control processors are an ideal choice for controlling multiple devices and control signal types within today's most challenging control system designs.

What's new:

The IPCP Pro Q xi Series control processors are multi-network models and feature:

- Quad core processors
- Four times more memory with 2 GB of RAM and 8 GB of Flash
- USB-C port for local setup and troubleshooting - IPCP Pro 555Q xi only

The IPCP Pro xi Series control processors are single network models and feature:

- Upgraded single core processors
- Two times more memory with 1 GB of RAM and 8 GB of Flash

SERIES COMMON FEATURES

- Supports TouchLink Pro touchpanels, eBUS® button panels, and Network Button Panels
- Supports secure industry standard communications protocols
- Supports LinkLicense® for User Interfaces
- Supports popular BMS – Building Management System protocols, such as BACnet, KNX, and DALI
- Multi-level password protection
- Fully customizable using Extron control system software
- An extensive library of Global Configurator device drivers and Global Scripter modules support devices from a broad range of manufacturers, streamlining configuration and programming

To learn more, visit [extron.com/ipcpxi](https://www.extron.com/ipcpxi)

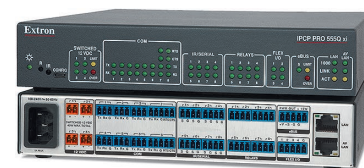
IP LINK PRO

IPCP Pro 555Q xi

IP Link Pro Quad Core Control Processor

UNIQUE FEATURES

- **NEW** Quad Core processor and four times more memory for increased upload speeds, faster runtime performance, and more sophisticated projects
- **NEW** USB-C port for local setup and troubleshooting
- AV LAN port allows AV devices to be isolated from the corporate network
- Six bidirectional RS-232 serial ports with software handshaking
- Two bidirectional RS-232/RS-422/RS-485 serial ports with hardware and software handshaking
- Eight IR/Serial ports for one-way control of external devices
- Four Flex I/O ports
- Eight relays for controlling room functions
- Four independently switched 12 VDC outputs
- DHCP server for AV LAN
- The LAN port will permit discovery, setup and firmware updates for Extron devices connected to the AV LAN port
- Integrated IR Learning capability
- 1U, half rack width metal enclosure



Model	Version Description	Part Number
IPCP Pro 555Q xi	IP Link Pro Control Processor.....	60-1917-01
IPCP Pro 555Q xi	IP Link Pro Control Proc., LL UI Upgrade.....	60-1917-01A

IPCP Pro 360Q xi

IP Link Pro Quad Core Control Processor

UNIQUE FEATURES

- **NEW** Quad Core processor and four times more memory for increased upload speeds, faster runtime performance, and more sophisticated projects
- Three AV LAN ports allow AV devices to be isolated from the corporate network
- AV LAN ports provide PoE+ to external devices
- Two bidirectional RS-232 serial ports with software handshaking
- One bidirectional RS-232/RS-422/RS-485 serial port with hardware and software handshaking
- Two IR/Serial ports for one-way control of external devices
- Four Digital I/O ports
- Four relays for controlling room functions
- DHCP server for AV LAN
- The LAN port will permit discovery, setup and firmware updates for Extron devices connected to the AV LAN port
- Extron Pro Series control devices
- Integrated IR learning capability
- 1U, half rack width metal enclosure



Model	Version Description	Part Number
IPCP Pro 360Q xi	IP Link Pro Control Processor.....	60-1916-01
IPCP Pro 360Q xi	IP Link Pro Control Proc., LL UI Upgrade.....	60-1916-01A

IPCP Pro 255Q xi

IP Link Pro Quad Core Control Processor

UNIQUE FEATURES

- **NEW** Quad Core processor and four times more memory for increased upload speeds, faster runtime performance, and more sophisticated projects
- AV LAN port allows AV devices to be isolated from the corporate network
- One bidirectional RS-232 serial port with software handshaking
- One bidirectional RS-232/RS-422/RS-485 serial port with hardware and software handshaking
- One IR/Serial port for one-way control of external devices
- Four Digital I/O ports
- Two relays for controlling room functions
- Remote volume control port for the Extron MPA Series and select XTRA™ Series amplifiers
- DHCP server for AV LAN
- The LAN port will permit discovery, setup and firmware updates for Extron devices connected to the AV LAN port
- Integrated IR Learning capability
- 1U, quarter rack width metal enclosure



Model	Version Description	Part Number
IPCP Pro 255Q xi	IP Link Pro Control Processor.....	60-1914-01
IPCP Pro 255Q xi	IP Link Pro Control Proc., LL UI Upgrade.....	60-1914-01A

For updated product availability, go to www.extron.com

IP LINK PRO

IPCP Pro 355DRQ xi

IP Link Pro Quad Core Control Processor - DIN Rail

UNIQUE FEATURES

- **NEW** Quad Core processor and four times more memory for increased upload speeds, faster runtime performance, and more sophisticated projects
- Securely mounts to an industry-standard DIN rail commonly used by third party automation equipment in racks and cabinets
- AV LAN port allows AV devices to be isolated from the corporate network
- Two bidirectional RS-232 serial ports with software handshaking
- One bidirectional RS-232/RS-422/RS-485 serial port with hardware and software handshaking
- Two IR/Serial ports for one-way control of external devices
- Four digital I/O ports
- Four relays for controlling room functions
- DHCP server for AV LAN
- The LAN port will permit discovery, setup and firmware updates for Extron devices connected to the AV LAN port



Model	Version Description	Part Number
IPCP Pro 355DRQ xi	IP Link Pro Control Processor, DIN Rail	60-1915-01
IPCP Pro 355DRQ xi	IP Link Pro Control Proc., DIN Rail, LL UI Upgrade	60-1915-01A

IPCP Pro 550 xi

IP Link Pro Control Processor

UNIQUE FEATURES

- **NEW** Single Core processor and two times more memory for increased project upload speeds, faster runtime performance and more sophisticated projects
- Six bidirectional RS-232 serial ports with software handshaking
- Two bidirectional RS-232/RS-422/RS-485 serial ports with hardware and software handshaking
- Eight IR/Serial ports for one-way control of external devices
- Four Flex I/O ports
- Eight relays for controlling room functions
- Four independently switched 12 VDC outputs
- Integrated IR Learning capability
- 1U, half rack width metal enclosure



Model	Version Description	Part Number
IPCP Pro 550 xi	IP Link Pro Control Processor.....	60-1913-01
IPCP Pro 550 xi	IP Link Pro Control Proc., LL UI Upgrade.....	60-1913-01A

IPCP Pro 350 xi

IP Link Pro Control Processor

UNIQUE FEATURES

- **NEW** Single Core processor and two times more memory for increased project upload speeds, faster runtime performance and more sophisticated projects
- Two bidirectional RS-232 serial ports with software handshaking
- One bidirectional RS-232/RS-422/RS-485 serial port with hardware and software handshaking
- Two IR/Serial ports for one-way control of external devices
- Four Digital I/O ports
- Four relays for controlling room functions
- Integrated three port network switch
- Integrated IR Learning capability
- 1U, half rack width metal enclosure



Model	Version Description	Part Number
IPCP Pro 350 xi	IP Link Pro Control Processor.....	60-1912-01
IPCP Pro 350 xi	IP Link Pro Control Proc., LL UI Upgrade.....	60-1912-01A

IP LINK PRO

IPCP Pro 250 xi

IP Link Pro Control Processor

UNIQUE FEATURES

- **NEW** Single Core processor and two times more memory for increased project upload speeds, faster runtime performance and more sophisticated projects
- One bidirectional RS-232 serial port with software handshaking
- One bidirectional RS-232/RS-422/RS-485 serial port with hardware and software handshaking
- One IR/Serial port for one-way control of external devices
- Four Digital I/O ports
- Two relays for controlling room functions
- Remote volume control port for the Extron MPA Series and select XTRA™ Series amplifiers
- Integrated IR Learning capability
- 1U, quarter rack width metal enclosure



Model	Version Description	Part Number
IPCP Pro 250 xi	IP Link Pro Control Processor.....	60-1911-01
IPCP Pro 250 xi	IP Link Pro Control Proc., LL UI Upgrade.....	60-1911-01A

IPCP Pro PCS1 xi

IP Link Pro Power and Device Control Processor

UNIQUE FEATURES

- **NEW** Single Core processor and two times more memory for increased project upload speeds, faster runtime performance and more sophisticated projects
- Intelligent current sensing with alarm
- Outlet status retention during power loss
- One male AC input and one female AC output - both using IEC connections
- Easily-accessible, front panel circuit breaker adds over-current protection for remotely controlled connected devices
- One bidirectional RS-232 serial port with software handshaking
- One IR/Serial port for one-way control of external devices
- Three digital I/O ports
- Supports control system synchronization
- 1U, quarter rack width metal enclosure



Model	Version Description	Part Number
IPCP Pro PCS1 xi	IP Link Pro Control Processor.....	60-1910-01
IPCP Pro PCS1 xi	IP Link Pro Control Proc., LL UI Upgrade.....	60-1910-01A

For updated product availability, go to www.extron.com

TLC Pro Series

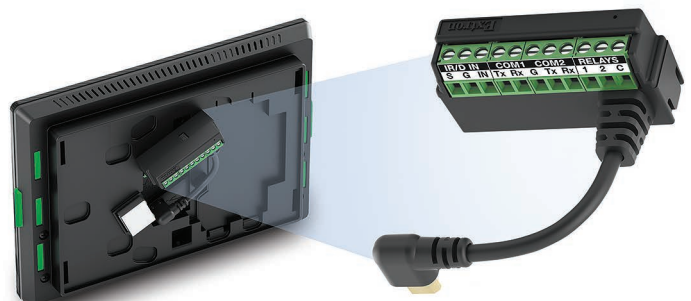


TouchLink Pro Touchpanels with Built-in Control Processors

TouchLink Pro Control Systems are complete solutions that combine a TouchLink Pro touchpanel with an integrated IP Link Pro control processor. This all-in-one approach streamlines system designs by consolidating essential control system components, freeing up space, and simplifying integration. The included port expansion adapter makes it easy to add traditional control ports when needed, directly at the touchpanel. All TLC Pro control systems maintain the same stylish appearance and high performance of our TouchLink Pro touchpanels and are ideal for any environment requiring a customizable, all-in-one touchpanel control system.

Key Features

- TouchLink Pro touchpanel with a built-in IP Link Pro control processor
- 5", 7", and 10" ultra-tough Gorilla Glass touchscreens
- All-in-one design saves space, simplifies system designs
- Control multiple devices directly from the Ethernet port
- Port expansion adapter provides convenient control directly from the touchpanel: two bidirectional RS-232 ports, one contact closure port, one IR port, and two relays
- Customizable mounting options
- PoE compatible
- Convenient onboard digital input



Port expansion adapter conveniently adds a variety of control ports directly to the back of the touchpanel.

To learn more, visit extron.com/TLC

TOUCHLINK PRO CONTROL SYSTEMS

TLC Pro 526M

5" Wall Mount TouchLink Pro Control System

UNIQUE FEATURES

- 5" capacitive touchscreen with 800x480 resolution and 24-bit color depth
- Can be mounted in a one-gang junction box, or on a wall, lectern, or any flat surface

Model	Version Description	Part Number
TLC Pro 526M	Black - Wall Mount	60-1853-02
TLC Pro 526M	White - Wall Mount	60-1853-03
TLC Pro 526M NC	Black - Wall Mount, No Camera	60-1853-12
TLC Pro 526M NC	White - Wall Mount, No Camera	60-1853-13



NOW SHIPPING

TLC Pro 726M

7" Wall Mount TouchLink Pro Control System

UNIQUE FEATURES

- 7" capacitive touchscreen with 1024x600 resolution and 24-bit color depth
- Can be mounted in a two-gang junction box, or on a wall, lectern, or any flat surface

Model	Version Description	Part Number
TLC Pro 726M	Black - Wall Mount	60-1854-02
TLC Pro 726M	White - Wall Mount	60-1854-03
TLC Pro 726M NC	Black - Wall Mount, No Camera	60-1854-12
TLC Pro 726M NC	White - Wall Mount, No Camera	60-1854-13



NOW SHIPPING

TLC Pro 1026M

10" Wall Mount TouchLink Pro Control System

UNIQUE FEATURES

- 10" capacitive touchscreen with 1280x800 resolution and 24-bit color depth
- Can be mounted in a two-gang junction box, or on a wall, lectern, or any flat surface

Model	Version Description	Part Number
TLC Pro 1026M	Black - Wall Mount	60-1855-02
TLC Pro 1026M	White - Wall Mount	60-1855-03
TLC Pro 1026M NC	Black - Wall Mount, No Camera	60-1855-12
TLC Pro 1026M NC	White - Wall Mount, No Camera	60-1855-13



NOW SHIPPING

TOUCHLINK PRO TOUCHPANELS

TLP Pro 300M

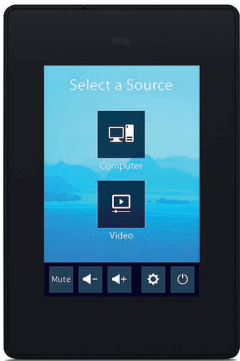
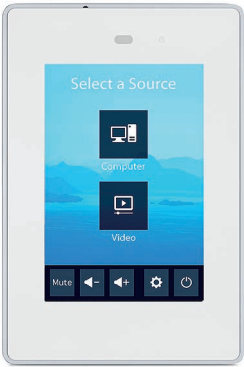
3.5" Portrait Wall Mount TouchLink Pro Touchpanel

The Extron TLP Pro 300M is a 3.5" portrait wall mount TouchLink® Pro Touchpanel. It is designed to control video, audio, lighting, shades, HVAC, security, and other systems within virtually any environment. This touchpanel is equipped with a 320x480 resolution capacitive touchscreen built with scratch and smudge-resistant Corning® Gorilla Glass®. The TLP Pro 300M can be conveniently mounted in a one-gang junction box without the need for additional mounting hardware. The TLP Pro 300M is ideal for any environment requiring a wall-mountable, portrait touchpanel with a fully customizable interface.

FEATURES

- 3.5" capacitive touchscreen with a 320x480 resolution
- Contemporary portrait design that complements the aesthetics of any environment
- Gorilla Glass® screen is tough, scratch and smudge-resistant
- Compatible with all Extron IP Link Pro control processors and HC 400 Series systems
- Power over Ethernet provides power and communication over a single Ethernet cable

Model	Version Description	Part Number
TLP Pro 300M	Black - Wall Mount, Portrait	60-1667-02
TLP Pro 300M	White - Wall Mount, Portrait	60-1667-03



TLP Pro 525C

5" Cable Cubby TouchLink Pro Touchpanel

The TLP Pro 525C is a Cable Cubby TouchLink® Pro Touchpanel with a 5" flip-up touchscreen in a Cable Access Enclosure. It has a high-resolution, 800x480 capacitive touchscreen built with scratch and smudge-resistant Corning® Gorilla Glass® and a high-performance quad-core processor for an ultra-responsive touchscreen experience. The TLP Pro 525C accommodates a wide variety of AC or AC+USB power modules, Retractor modules, AV cables, and AAP™ AV Connectivity Modules.

FEATURES

- 5" capacitive flip-up touchscreen with 800x480 resolution and 24-bit color depth
- Cable Cubby design offers easy access to AV, data, and power connections
- Gorilla Glass® screen is tough, scratch, and smudge-resistant
- Faster, quad-core processing and eight times more memory
- Compatible with all IP Link Pro control processors
- Power over Ethernet provides power and communication over a single Ethernet cable

Model	Version Description	Part Number
TLP Pro 525C	Black - w/o AC Module	60-1560-02
TLP Pro 525C NC	Black - w/o AC Module, No Camera	60-1560-12



NOW SHIPPING

TOUCHLINK PRO INTERFACE

TLI Pro 201

4K TouchLink Interface with Built-In Annotation

The Extron TLI Pro 201 is a TouchLink® Interface that allows a third-party 4K touchscreen display to be used as a point of control within an Extron Pro Series control system. This unique interface includes a scaled HDCP 2.2-compliant HDMI input for video preview, supporting resolutions up to 4K/30. The scaled output supports signal resolutions up to 4K/30 at 4:4:4. The TLI Pro 201 has built in annotation features, allowing a presenter to draw and point on 4K video or computer sources using a third-party touchscreen display and/or mouse. In addition, it also features the convenience of PoE, which allows it to receive power and communication over a single Ethernet cable.

FEATURES

- Utilize a third-party 4K touchscreen display as a point of control within an Extron Pro Series control system
- Compatible with third-party touchscreen displays up to 4K/30 at 4:4:4
- Compatible with all IP Link Pro control processors and HC 400 Series Meeting Space Collaboration Systems
- HDCP 2.2-compliant HDMI Input for full-motion video preview and monitoring
- Built in annotation features
- Fast processing and ample memory



Model	Version Description	Part Number
TLI Pro 201	4K TouchLink Interface.	60-1669-01

TOUCHLINK PRO ACCESSORIES

TSP Series

TouchLink Screen Protectors

The Extron TSP Series screen protectors shield TouchLink Pro touchpanels from damage. Made specifically for the 5", 7", and 10" TouchLink Pro touchpanels, these tempered glass screen protectors provide excellent touch sensitivity for smooth unimpeded gestures, equivalent to a touchscreen without a TSP protector installed. The included alcohol wipe, cleaning cloth, and dust removal tape ensure proper installation. The TSP Series can be easily removed from the touchscreen if no longer needed.

FEATURES

- Provides extra screen protection for 5", 7", and 10" TouchLink Pro touchpanels
- Provides excellent touch sensitivity for smooth, unimpeded gestures
- Easy to mount and easy to remove
- Includes alcohol wipe, cleaning cloth, and dust removal tape to ensure proper installation



Model	Version Description	Part Number
TSP 1	5" TouchLink Pro Screen Protector, Qty. 1	70-1293-10
TSP 2	7" TouchLink Pro Screen Protector, Qty. 1	70-1293-20
TSP 3	10" TouchLink Pro Screen Protector, Qty. 1	70-1293-30

For updated product availability, go to www.extron.com

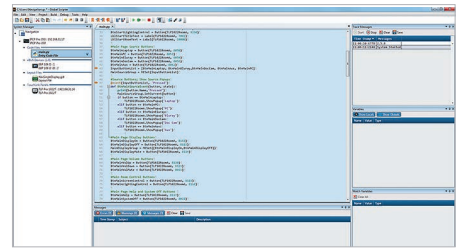
SOFTWARE

Global Scriptor**Integrated Development Environment for Extron Control Systems Programming**

Global Scriptor® is Extron's powerful and versatile control system programming software. This feature-rich integrated development environment is used to program Extron Pro Series control systems, and utilizes the easy-to-learn Python scripting language. Global Scriptor includes an Extron-exclusive Python library - ControlScript®, that is designed to increase the productivity of AV programmers through incorporating functions used in AV control system projects, as well as helpful documentation, reference material, and sample code. Extron built Global Scriptor and the ControlScript Python libraries with programmers in mind. Working together, these components make it easier than ever to develop refined and innovative programmable control systems.

FEATURES

- Develop AV control system programming using clean and extensible Python 3.5
- Develop, debug and deploy from a single software environment
- View user interfaces within the IDE and generate code from information in the user interface layout
- Support for latest Extron control system hardware
- Extensive library of Extron and third party modules
- Deployment mode for technicians and installers

**Global Configurator Plus and Global Configurator Professional****Powerful Configuration Software for AV Control Systems**

Global Configurator® is Extron's most powerful and versatile control system configuration software. It is designed to be used exclusively with Extron Pro Series Control products, including TouchLink® Pro touchpanels, IP Link® Pro control processors, MediaLink® Plus controllers, and eBUS® button panels and devices, and NBP Network Button Panels. Powerful features, such as conditional logic, variables, and macros provide greater flexibility for more elaborate control system designs. Global Configurator has two modes. Global Configurator Plus is ideal for smaller applications requiring one control processor and one control interface. Global Configurator Professional is suited for applications requiring multiple control processors, enhanced functionality, and advanced configuration. Access to Global Configurator Professional requires ECP Certification.

FEATURES

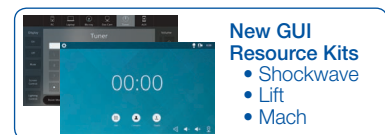
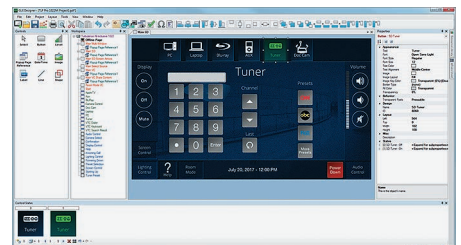
- Quickly and efficiently develop configurations for AV control systems without the need to learn a programming language.
- Develop, debug and deploy from a single software environment
- View user interfaces and assign control functions using a click and drag interface.
- Support for the latest control system hardware
- Extensive library of Extron and third party drivers
- Online training available

**GUI Designer****Free Design Software for User Interfaces**

Extron GUI Designer is a software application used for the design, creation, and maintenance of Extron TouchLink® Pro user interfaces. Begin with ready-to-use design templates and resource kits, or start from scratch and build your own layout using our comprehensive software. The available design elements are fully customizable and matched carefully to popular AV system applications. In many cases, all the input sources, display control, and environmental settings are already in place. These resources are fully developed and include complete, detailed documentation.

FEATURES

- Develop graphical user interfaces for Extron's TouchLink Pro touchpanels, as well as, Extron Control for Web, iOS and Android.
- Support for latest Extron TouchLink Pro touchpanels and TLC Pro TouchLink Control Systems.
- Extensive library of TouchLink Pro Templates and GUI Resource Kits



SOFTWARE

GlobalViewer Enterprise

Server-Based AV Resource Management Software

GlobalViewer® Enterprise - GVE software simplifies AV system resource management with intuitive control for hundreds of common AV tasks. Whether you're working with 5 or 5000 rooms, GVE provides a powerful, flexible way to manage, monitor, and control nearly any device over a standard network. Support teams will appreciate the agility and flexibility GVE provides to access usage data, create reports, and control the system from any computer on the network. The Help Desk view offers a look at the entire enterprise in a single window and access to detailed room data and control with just a click of a mouse.

Extron RoomAware™ delivers automation for the modern workspace with time-saving features. Intelligent room automation and control enables smart connections between Extron devices and services to prepare the room prior to the start of a meeting.

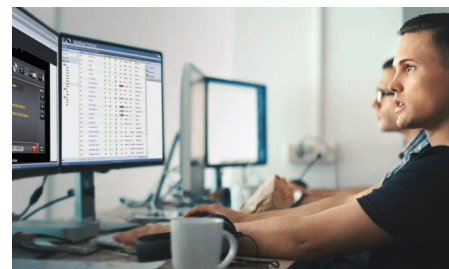
FEATURES

- Easily manage all AV devices and meeting rooms across the campus and enterprise
- Track and analyze device and room usage, proactively plan maintenance activities, and maintain inventory lists using customizable reports

- Custom reporting tools
- Extron GlobalViewer Enterprise Commissioning with every installation ensures a trouble-free system installation and optimal performance
- Enhanced monitors and schedules based on location and device type
- Seamless integration with facility scheduling software
- Extron Control for Web 2.0 with HTML5 and JavaScript
- RoomAware Outlook add-in
 - Automatically turn on all devices for scheduled meetings
 - Upon leaving the room, return devices to the previous state
- Directly view and monitor the status of ShareLink Pro, SMP – Streaming Media Processor devices, and TLS - TouchLink Scheduling panels
- View vTLP - Virtual TouchLink Pro panels using HTML5 which supports multiple browsers
- Monitor the health and status of TLS - TouchLink Scheduling panels

COMING SOON

- Secure Platform device support



To learn more,
visit extron.com/GVE

NOW AVAILABLE

ROOM SCHEDULING

Extron Room Scheduling

Book a Room the Easy Way

We have simplified the room booking experience with Extron Room Scheduling and our TLS Series scheduling panels. This system connects directly to popular calendaring services including Microsoft Exchange, Office 365, Google Calendar, and others. Users can reserve rooms with a couple taps on the panel or from their mobile device. Free Room Agent software makes setup a breeze, allowing you to customize the touchpanel interface with the meeting options you need. Multiple mounting choices are available for the touchpanels, including on-wall, in-wall, as well as secure mounting to almost any flat surface, including glass or granite.

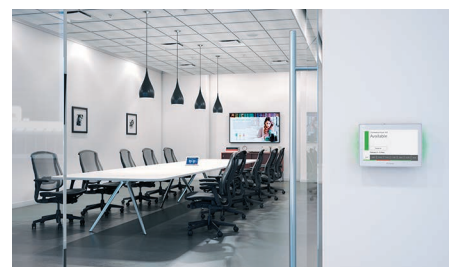
FEATURES

- Make on-demand reservations from the touchpanel, computer, or any mobile device that connects to Microsoft® Exchange, Office 365™, Google Calendar™, 25Live®, EMS and NFS.

- Use a variety of 5", 7", and 10" TLS TouchLink Scheduling panel sizes and mounting options ensure the right look for any application
- Easily deploy one or multiple touchpanels with similar settings
- No annual subscription or maintenance fees
- All communication between the touchpanel and calendar server is encrypted and secure
- A downloadable Scheduling Activity file lets you generate analytics on room usage, activity patterns, and trends across the enterprise
- Supports occupancy sensors to monitor the environment
- Supports 27 languages

COMING SOON

- Calendaring integration with Ad Astra
- Proxy Support
- Ability to hide private meetings



To learn more,
visit extron.com/RS

NOW AVAILABLE

For updated product availability, go to www.extron.com

Europe
+31.33.453.4040 / +800.3987.6673
+31.33.453.4050 FAX

Middle East
+971.4.299.1800
+971.4.299.1880 FAX

Asia
+65.6383.4400 / +800.7339.8766
+65.6383.4664 FAX

China
+86.21.3760.1568 / +4000.398766
+86.21.3760.1566 FAX

Japan
+81.3.3511.7655
+81.3.3511.7656 FAX

Extron

ROOM SCHEDULING

Wayfinding Interface
Easily Connect Users with Meeting Spaces

The TLSI 201 is an interactive wayfinding interface that provides real-time meeting space availability, status, and location information using a centralized display. It is designed to connect directly with Extron Room Scheduling panels enabling users to easily locate and book meeting spaces. The TLSI 201 is configured using free Extron Room Agent software and requires no additional programming or external processors. Customization options include custom branding, grid or map view layouts, as well as light and dark themes. The scaled output supports signal resolutions up to 1080p and is ideal for displays 40 inch or larger. It features the convenience of PoE – Power over Ethernet, which enables it to receive power and communication over a single Ethernet cable.

- FEATURES**
- Interactive wayfinding and room booking capabilities from centralized display
 - Connects directly with TouchLink Scheduling panels
 - Easy to navigate room availability information on grid layout or customer-provided map
 - Configurable with free Room Agent software
 - Requires no additional programming or external processors
 - PoE+ compatible
 - Simple customization options with color themes, custom message, and logo
 - Flexible information fields can be turned on or off for viewing
 - Ideal for 40" or larger 1080p interactive displays



Model	Version Description	Part Number
TLSI 201	Wayfinding Interface.....	60-1669-101

Mullion Mount Kits
for TouchLink Scheduling Panels

Extron Mullion Mount Kits are specifically designed to mount TouchLink Scheduling Panels securely on the vertical frame that separates a door opening from the adjacent glass wall. This kit provides an aesthetic and inconspicuous appearance to blend in with the design of the TLS panel and mullion frame. The kits are available in black and silver matte finishes, and include a number of mounting accessories that aid in installation.

- FEATURES**
- Used to securely mount a TouchLink Scheduling panel on the vertical frame that separates a door opening from the adjacent glass wall
 - Aesthetically pleasing appearance, both outside the room and inside the room
 - Design allows the LED lights on either side of the touchpanel to still be visible after mounting
 - Can be mounted to meet ADA height compliance
 - Does not hinder the glass wall as no adhesive is required

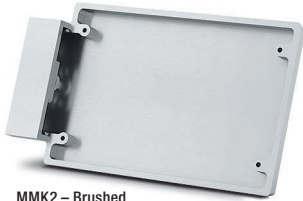


MMK2 Mullion Mount with TLS 725M TouchLink Scheduling Panel

Model	Version Description	Part Number
MMK 1	TLS 525M Mullion Mount Kit - Black.....	70-1264-12
MMK 1	TLS 525M Mullion Mount Kit - Brushed Aluminum.....	70-1264-18
MMK 2	TLS 725M Mount Kit - Black.....	70-1264-22
MMK 2	TLS 725M Mount Kit - Brushed Aluminum.....	70-1264-28
MMK 3	TLS 1025M Mount Kit - Black.....	70-1264-32
MMK 3	TLS 1025M Mount Kit - Brushed Aluminum.....	70-1264-38



MMK1 – Black Finish



MMK2 – Brushed Aluminum Finish

STREAMING AV

SMP LinkLicense for Panopto

Leverage the Power of SMP Recorders with Panopto Video Platform

Extron offers enhanced features to seamlessly connect the Extron SMP 300 Series Streaming Media Recorder to Panopto enterprise video management systems. The LinkLicense for Enhanced Panopto Features enables users to fully manage SMP recording schedules for lectures and presentations with the Panopto video platform and stream live events. Users will enjoy a unified and integrated experience with automated publishing workflows that ensure each recording is delivered to the intended media folder for viewing.

FEATURES

- Record automatically based on Panopto calendar data
- Save time with automated metadata delivery to Panopto
- Flexible ad-hoc or scheduled video capture and automated workflows for both ad-hoc and scheduled events
- Stream live events in high definition to Panopto
- Intuitive one-touch control with customizable features for advanced requirements
- Extron certified control drivers and modules for effortless integration

Model	Version Description	Part Number
LinkLicense	SMP 300 Series Panopto Features Upgrade.....	79-2562-01



To learn more,
visit extron.com/Panopto

NOW AVAILABLE

LinkLicense for SMP 111 and SMP 300 Series

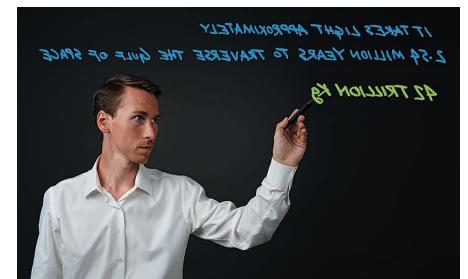
Add Horizontal Video Mirroring Capabilities

The Horizontal Video Mirroring Upgrade LinkLicense adds powerful features to SMP 111 and SMP 300 Series Streaming Media Processors. The expanded functionality enhances and streamlines the recording of video and audio presentations. Horizontal Video Mirroring flips video horizontally to support lightboard or other applications that require reversal of the video image due to the presenter facing the camera while writing on a transparent surface. This eliminates time and resources spent manually flipping the video in post-production. Add an Extron Pro Series Control Processor and a TouchLink Pro touchpanel for a user-friendly, integrated recording solution. A free system template for TouchLink Pro touchpanels provides easy access to SMP 111 and SMP 300 Series recording functions, including Horizontal Video Mirroring.

FEATURES

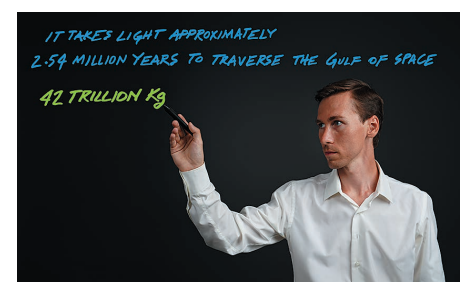
- Adds Horizontal Video Mirroring capabilities to any SMP 111 or SMP 300 Series processor
- Save time and eliminate video editing in lightboard applications
- Adjustable limit for minimum available recording time
- Delay start of recording
- Horizontal Video Mirroring web interface
- Use with an Extron Pro Series control system for a full-featured recording solution

Model	Version Description	Part Number
LinkLicense	SMP 300 Series Horizontal Video Mirroring Upgrade	79-2553-01
LinkLicense	SMP 111 Horizontal Video Mirroring Upgrade	79-2553-02



Recordings from lightboard applications will appear backwards as if seen in a mirror

Horizontal Mirroring



Horizontal Video Mirroring automatically flips the video to create legible recordings



NOW AVAILABLE

For updated product availability, go to www.extron.com



Quantum Ultra Certified Certification Program for Professional Videowall Displays

We are pleased to announce that industry-leading display manufacturers have teamed with Extron to guarantee compatibility between their display devices and the Quantum Ultra 4K Videowall Processor. Extron has worked closely with these manufacturers to validate consistent, stable presentation of source content. Display devices that pass the extensive testing program are identified as Quantum Ultra certified.

Output rotation, output overlap, bezel compensation, and custom output resolution support make Quantum Ultra the perfect companion for a diverse array of display technologies. By pairing a Quantum Ultra processor with a Quantum Ultra certified display device, compatibility concerns are eliminated from the product specification process. System designers can take comfort knowing that the products have been tested together using established parameters, such as image stability, image acquisition, and EDID management. This ensures consistent and reliable operation between processor and displays, streamlining videowall integration and reducing the need for on-site troubleshooting.

Quantum Ultra Certification Benefits

- Collaboration between Extron and display manufacturers guarantees compatibility with Quantum Ultra
- Ensures consistent and reliable operation between processor and displays
- Simplifies system design by offering a selection of devices certified to work together
- Extensive testing validates signal stability and EDID communication
- Streamlines system integration by reducing need for on-site troubleshooting

Certified Displays:

Daktronics:

- NPN-4100 LED Display and DI-6000 Display Interface

Planar:

- Clarity® Matrix® G3 MX55X Video Wall System
- Planar® DirectLight® X 1.2mm LED Video Wall System

To learn more, visit extron.com/QUCertified

VIDEOWALL PROCESSORS

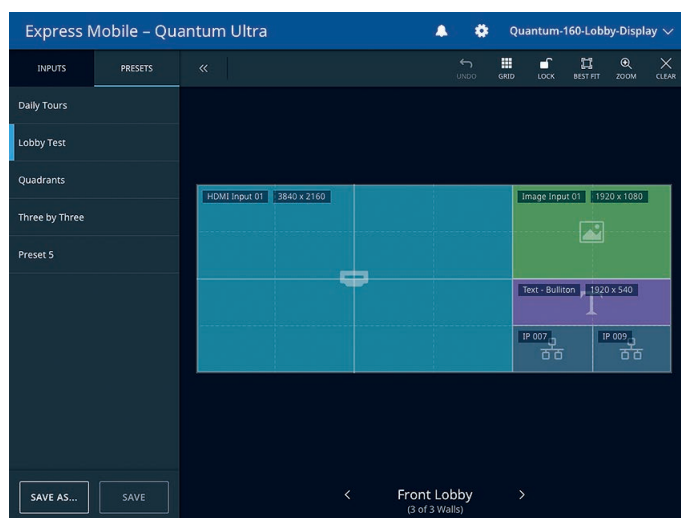


EMS Express Mobile Software - Quantum Ultra Convenient End User Control Application for Videowall Processors

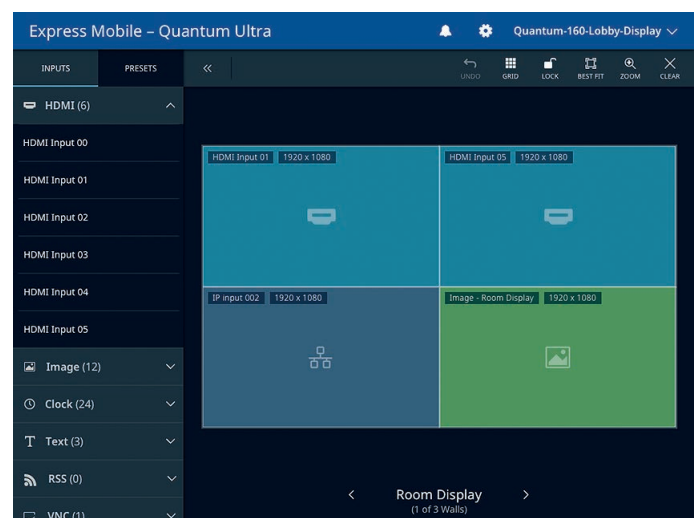
EMS Express Mobile Software - Quantum Ultra is an application designed to provide end-users with intuitive control of Quantum Ultra videowall processors. It is compatible with Apple® iOS®, Google® Android™, and Microsoft® Surface platforms. The software combines the freedom of wireless control with an easy to use application operated with familiar finger gestures, such as tap, drag and drop, swipe, and pinch/stretch. It facilitates preset selection, window size and position, source selection, and other common operational tasks, and can work in tandem with VCS and a control system. Up to 10 users can control one or more videowalls. Separate User, Designer, and Administrator credentials define operational roles. EMS - Quantum Ultra is ideal for use with systems requiring one or more points of control through a user-friendly interface.

FEATURES

- Provides convenient control of Extron Quantum Ultra videowall processors from a mobile device
- Compatible with Apple® iOS®, Google® Android™, and Microsoft® Surface mobile devices
- Simplifies common operational tasks, such as preset selection, window management, and source switching
- Supports familiar operational gestures, including tap, drag and drop, swipe, and pinch/stretch
- Control videowalls from up to 10 mobile devices simultaneously
- Requires videowall processor with LinkLicense® for EMS - Quantum Ultra



Preset Selection



Preset editing with Source Selection Sidebar

For updated product availability, go to www.extron.com

Europe
+31.33.453.4040 / +800.3987.6673
+31.33.453.4050 FAX

Middle East
+971.4.299.1800
+971.4.299.1880 FAX

Asia
+65.6383.4400 / +800.7339.8766
+65.6383.4664 FAX

China
+86.21.3760.1568 / +4000.398766
+86.21.3760.1566 FAX

Japan
+81.3.3511.7655
+81.3.3511.7656 FAX

Extron

VIDEOWALL PROCESSORS

Quantum Ultra Connect
4K Videowall Processing for Small to Mid-Sized Applications

Extron Quantum® Ultra Connect 84 and Quantum Ultra Connect 128 are eight and twelve HDMI input videowall processors for systems with up to four or eight displays. They deliver the same high-quality scaling and real-time performance as Extron's Quantum Ultra processors, featuring the Vector™ 4K scaling engine and HyperLane® high-speed video bus technology. Custom output resolutions, input and output image rotation, and bezel compensation provide compatibility with a wide variety of display technologies. Flexible window placement allows side-by-side, overlap, and picture in picture image positioning. For HDCP-encrypted content, Key Minder® and SpeedSwitch® Technology deliver virtually instantaneous switching. RS-232, USB, and Ethernet interfaces provide control system connection, eliminating the need for a dedicated control computer.

- FEATURES**
- Cost effective 4K/60 HDMI videowall processors for videowalls with up to eight screens
 - Supports 4K on one, two, or four connections
 - Extron Vector™ 4K scaling engine
 - 400 Gbps HyperLane® video bus delivers unparalleled real-time performance
 - Direct control via RS-232, USB, and Ethernet
 - Designed for 24/7, mission-critical environments
 - Integrates easily into a diverse array of 4K environments such as lobbies, auditoriums, and simulation environments
 - Seamless transitions
 - 3U, 5-slot card frame
 - Solid-state storage
 - Write-protected operating system



Quantum Ultra Connect 84



Quantum Ultra Connect 128

Model	Version Description	Part Number
Quantum Ultra Connect 84	8 Inputs, 4 Outputs	60-1898-01
Quantum Ultra Connect 128	12 Inputs, 8 Outputs	60-1898-02

SCALERS

IN1804 DI/DO
Four Input 4K/60 Seamless Scaling Switcher

The Extron IN1804 DI/DO is a compact four input scaler that supports video resolutions up to 4K/60 at 4:4:4. It incorporates Extron-patented Vector 4K scaling technology specifically engineered for critical 4K signal processing applications. It features DisplayPort and HDMI inputs along with Extron DTP2 extension of 4K/60 video, audio, and control signals up to 330 feet (100 meters) over a shielded CATx cable. The IN1804 DI/DO delivers the convenience of fast and reliable automatic switching, along with advanced capabilities such as audio embedding/de-embedding, seamless transition effects, and logo keying. Designed for professional AV integration, the IN1804 DI/DO can be controlled and configured using Ethernet, RS-232, USB, and contact closure with tally outputs.

- FEATURES**
- Integrates DisplayPort, HDMI, and audio sources into presentation systems
 - Integrated DTP2 input and output support transmission of 4K/60 video, audio, and control up to 330 feet (100 meters) over a shielded CATx cable
 - Advanced Extron Vector™ 4K scaling engine
 - Supports signal resolutions up to 4K/60 with 4:4:4 color sampling
 - Supported HDMI 2.0 specification features include data rates up to 18 Gbps, Deep Color, and HD lossless audio formats
 - Logo image keying and display
 - Selectable seamless switching transitions
 - Auto-switching between inputs
 - HDCP 2.2 compliant



DTP
SYSTEMS

18 Gbps
4K/60 4:4:4

VECTOR 4K
SCALING

NOW SHIPPING

Model	Version Description	Part Number
IN1804 DI/DO	Four Input 4K/60 Scaler, DTP2 I/O	60-1699-14

ISS 608



VECTOR 4K
SCALING

18 Gbps
4K/60 4:4:4

EVERLAST
POWER SUPPLIES

True Seamless 4K/60 Scaling and Switching Leaps Ahead to the Next Generation

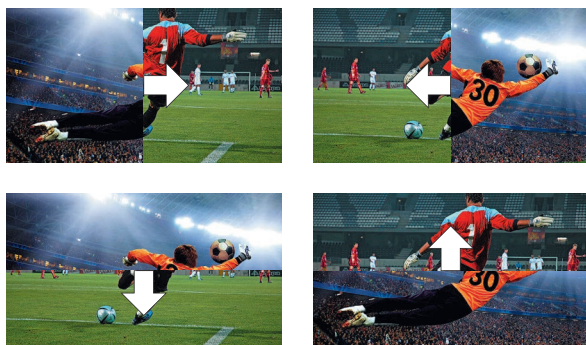
Take your live presentations to an entirely new level with dynamic, seamless switching of 4K content. The ISS 608 features six HDMI 2.0 inputs and two DisplayPort 1.2 inputs, providing full 18 Gbps support of signals up to 4K/60 with 4:4:4 chroma sampling inputs. The HDCP 2.2-compliant ISS 608 combines true seamless switching with advanced Vector™ 4K scaling technology to deliver unequaled video performance for high-end presentations and live events on even the largest of screens.

Professional Switching Transitions

Multiple switching and transition effects enhance the delivery of any presentation. Wipes with selectable direction and duration, a dissolve with selectable duration, and a seamless cut eliminate distracting jumps, glitches, and delays from your presentation.



Dissolve



Wipe

Production-style Matrix Switching

Matrix Mode provides production-style switching effects for any HDMI matrix switcher. Connect two switcher outputs to inputs 1 and 2 on the ISS 608 to automatically apply a transition effect between the video sources when a switch is detected.

Independent Preview and Program Outputs

Independent video buses for Preview and Program outputs enable the operator to confidently control the presentation by reviewing sources on a local monitor before switching them to the Program output for the viewing audience.

Flexible Audio Management

Embedded multi-channel HDMI and DisplayPort audio is switched, along with video, to the HDMI outputs. During a dissolve or wipe, the switcher performs an audio fade down/fade up transition for the duration of the video effect. The ISS 608 includes balanced/unbalanced analog audio outputs for sending de-embedded two-channel audio to a sound system or other destination.

Model
ISS 608

Version Description

Six HDMI & Two DisplayPort Inputs

Part Number

60-1684-01

To learn more, visit extron.com/ISS

DTP2 CrossPoint 82



DTP
SYSTEMS

18 Gbps
4K/60 4:4:4

VECTOR 4K
SCALING

The Industry's Most Advanced 4K/60 Matrix Switcher

The Extron DTP2 CrossPoint 82 is an 8x2 matrix switcher that supports signal resolutions up to 4K/60 at 4:4:4 for all inputs and outputs. It features DisplayPort and HDMI inputs, an HDMI output, and Extron DTP2 extension to send 4K/60 video, audio, and control signals up to 330 feet (100 meters) over a shielded CATx cable. The DTP2 matrix output is powered by Extron Vector™ 4K scaling technology, capable of seamless switching, logo keying, and scaled resolutions up to 4K/60. A built-in Extron IP Link® Pro control processor and integrated 100-watt Class D power amplifier make the DTP2 CrossPoint 82 an all-in-one system design solution. It delivers excellent image quality, fast and reliable switching, along with Extron ProDSP audio processing and an HDMI loop-through.

Features:

- All-in-one 8x2 matrix switcher, scaler, audio DSP, audio power amplifier, and control processor
- DTP2, DisplayPort, and HDMI inputs
- One scaled DTP2 output and one HDMI output
- Advanced Extron Vector™ 4K scaling engine
- Supports signal resolutions up to 4K/60 with 4:4:4 color sampling
- HDCP 2.2 compliant
- Ethernet insertion of control signals at the matrix provides centralized communication to remote endpoints
- Powerful integrated ProDSP™ 64-bit audio signal processing
- Available with energy efficient Class D stereo or mono amplifier:
 - 2 x 50 watts @ 4 ohms; 2 x 25 watts @ 8 ohms
 - 1 x 100 watts @ 70 volts
- Available with integrated IPCP Pro 355M control processor

Model	Version Description	Part Number
DTP2 CrossPoint 82	Standard Model.....	60-1812-01
DTP2 CrossPoint 82 IPCP SA	Control Processor and Stereo Amp.....	60-1812-02
DTP2 CrossPoint 82 IPCP SA	Control Processor and Stereo Amp, LL UI Upgrade	60-1812-02A
DTP2 CrossPoint 82 IPCP MA 70	Control Processor and Mono Amp.....	60-1812-03
DTP2 CrossPoint 82 IPCP MA 70	Control Processor and Mono Amp, LL UI Upgrade	60-1812-03A

To learn more, visit extron.com/DTP2CP

DTP SYSTEMS

DTP2 T 202 FB

Two Input 4K/60 DTP2 Transmitter for Floor Boxes

The DTP2 T 202 FB is a two-input transmitter for sending DisplayPort, HDMI, audio, and control up to 330 feet (100 meters) over a shielded CATx cable. Its unique form factor provides a flexible floor box mounting solution that is compatible with offerings from OBO Bettermann, MK by Honeywell, Electraplan, and PUK. The DTP2 T 202 FB supports video resolutions up to 4K/60 at 4:4:4 chroma sampling, and complies with HDCP 2.2. It features analog stereo audio embedding plus automatic switching between inputs for easy operation in unmanaged locations. Designed for DTP® Systems, the DTP2 T 202 FB enables discreet placement in a floor box under a lectern, table, or wherever needed to meet application requirements.

FEATURES

- Designed to mount in a variety of floor boxes
- Transmits DisplayPort, HDMI, control, and analog audio up to 330 feet (100 meters) over a shielded CATx cable
- Supports computer and video resolutions up to 4K/60 @ 4:4:4
- Auto-switching between inputs
- Analog stereo audio embedding
- Supports DisplayPort SST - Single Stream Transport data rates up to 21.6 Gbps
- Supported HDMI 2.0b specification features include data rates up to 18 Gbps, HDR, Deep Color up to 12-bit, 3D, and HD lossless audio formats

Model	Version Description	Part Number
DTP2 T 202 FB	Two Input 4K/60 Floor Box Tx - 330 feet (100 m)	60-1586-52



DTP
SYSTEMS

18 Gbps
4K/60 4:4:4

DTP2 T 203

Three Input 4K/60 Switcher with Integrated DTP2 Transmitter

The Extron DTP2 T 203 is a three-input transmitter for sending DisplayPort, HDMI, audio, and control up to 330 feet (100 meters) over a shielded CATx cable to Extron DTP®-enabled products. It provides a DisplayPort input, two HDMI inputs, and a DTP2 output. The DTP2 T 203 supports video signals at resolutions up to 4K/60 at 4:4:4 chroma sampling, and complies with HDCP 2.2. Audio embedding and Ethernet remote control facilitate integration in professional environments. Integrator-friendly features include EDID Minder®, auto-switching between inputs, and bidirectional RS-232 and IR pass-through for remote AV device control. The low-profile enclosure enables discreet placement in lecterns, beneath tables, or wherever needed to meet application requirements.

FEATURES

- Transmits DisplayPort, HDMI, control, and analog audio up to 330 feet (100 meters) over a shielded CATx cable
- Supports computer and video resolutions up to 4K/60 @ 4:4:4
- Auto-switching between inputs
- Analog stereo audio embedding
- Supports DisplayPort SST - Single Stream Transport data rates up to 21.6 Gbps
- Supported HDMI 2.0b specification features include data rates up to 18 Gbps, HDR, Deep Color up to 12-bit, 3D, and HD lossless audio formats
- Ethernet monitoring and control
- DTP2 output is compatible with HDBaseT-enabled devices

Model	Version Description	Part Number
DTP2 T 203	Three Input 4K/60 Switcher - 330 feet (100 m)	60-1659-52



DTP
SYSTEMS

18 Gbps
4K/60 4:4:4

NOW SHIPPING

DTP2 T 204

Four Input 4K/60 HDMI Switcher with Integrated DTP2 Transmitter

The Extron DTP2 T 204 is a four-input switcher for sending HDMI and control up to 330 feet (100 meters) over a shielded CATx cable to an Extron DTP®-enabled product. It provides four HDMI inputs and a DTP2 output. The DTP2 T 204 supports video signals at resolutions up to 4K/60 at 4:4:4 chroma sampling and complies with HDCP 2.2. Ethernet remote control and contact/tally connections facilitate integration in professional environments. The half-rack enclosure enables discreet placement within lecterns, beneath tables, or wherever needed to meet application requirements.

FEATURES

- Transmits HDMI and control up to 330 feet (100 meters) over a shielded CATx cable
- Supports computer and video resolutions up to 4K/60 @ 4:4:4
- Auto-switching between inputs
- Supported HDMI 2.0b specification features include data rates up to 18 Gbps, HDR, Deep Color up to 12-bit, 3D, and HD lossless audio formats
- Ethernet monitoring and control
- DTP2 output is compatible with HDBaseT-enabled devices

Model	Version Description	Part Number
DTP2 T 204	4K/60 HDMI Switcher with DTP2 Tx - 330 feet (100m)	60-1626-52



DTP
SYSTEMS

18 Gbps
4K/60 4:4:4

For updated product availability, go to www.extron.com

XTP SYSTEMS

XTP II CP 4i HD DMA 4K PLUS
4K/60 HDMI Input Board with Downmixing Audio

The XTP II CP 4i HD DMA 4K PLUS input board provides local HDMI connectivity and facilitates multi-channel audio downmixing. It is HDMI 2.0b and HDCP 2.2-compliant and supports computer and video resolutions up to 4K/60 at 4:4:4 color sampling. It also supports separate analog stereo audio signals, which are converted to two-channel PCM digital audio for independent routing within the system. To simplify integration, stereo audio can be embedded into the XTP® signal stream for distribution alongside video signals. The XTP II CP 4i HD DMA 4K PLUS input board enables enhanced audio capabilities within XTP Systems®.

- FEATURES**
- Four HDMI inputs with stereo audio and multi-channel audio downmixing
 - Supports computer and video resolutions up to 4K/60 @ 4:4:4
 - HDCP 2.2 compliant
 - Support for HDR - High Dynamic Range video
 - Audio breakaway enables independent audio and video switching
 - Multi-channel to two-channel audio downmixing provides enhanced audio capabilities
 - Supported HDMI 2.0b specification features include data rates up to 18 Gbps, HDR, Deep Color up to 12-bit, 3D, and HD lossless audio formats
 - Comprehensive EDID management
 - Compatible with all XTP II CrossPoint and XTP CrossPoint matrix switchers



XTP
SYSTEMS

18 Gbps
4K/60 4:4:4

NOW SHIPPING

Model	Version Description	Part Number
XTP II CP 4i HD DMA 4K PLUS	Four Input Board, HDMI 4K/60 - Downmixing Audio	70-1112-02

XTP CP 4i 12G-SDI Board
12G-SDI Input Board with SDI and HDMI Input Loop-Through

The Extron XTP CP 4i 12G-SDI Input Board enables 12G-SDI connectivity within XTP Systems®. It supports 12G-SDI, 6G-SDI, 3G-SDI, and HD-SDI video signal data rates up to 11.88 Gbps, and passes HDR, embedded audio, along with other ancillary data allowed by the SMPTE and ITU specifications. Incoming signals are automatically equalized to provide optimal signal quality for long cable runs. Buffered SDI and HDMI loop-through connections deliver added convenience, accommodating local displays. For flexible audio management and breakaway audio routing, the input board facilitates two-channel AES audio extraction.

- FEATURES**
- Supports 12G-SDI, 6G-SDI, 3G-SDI, and HD-SDI signals
 - Automatically adapts to SMPTE and ITU digital video standards
 - Supports data rates from 1.49 Gbps to 11.88 Gbps
 - Buffered SDI and HDMI input loop-throughs
 - Support for HDR - High Dynamic Range video
 - Automatic input cable equalization
 - Automatic output reclocking
 - Passes ancillary data including HDR, embedded audio, closed caption, and timecode
 - Immunity to pathological signal patterns
 - Embedded AES audio support
 - SD Pro processing provides deinterlacing of standard definition video
 - Compatible with all XTP CrossPoint matrix switcher models



XTP
SYSTEMS

4K UHD

Model	Version Description	Part Number
XTP CP 4i 12G-SDI	Four Input Board, 12G-SDI w/ SDI and HDMI Outputs	70-1171-01

DXP HD 4K PLUS Series



18 Gbps
4K/60 4:4:4



Full-Featured 4K/60 HDMI Matrix Switchers with Industry-Leading Performance

We are pleased to add new 4x2, 16x8, and 16x16 models to the DXP HD 4K PLUS Series of high-performance HDMI matrix switchers that can handle video resolutions up to 4K/60 4:4:4. These new models complement the current 4x4, 8x4, and 8x8 models, featuring the same performance and capabilities to accommodate any installation. Each matrix switcher provides audio de-embedding for easy integration into a wide variety of professional AV applications. To maintain signal integrity and reliability, the DXP HD 4K PLUS Series matrix switchers include automatic cable equalization on all inputs and output reclocking to reshape and restore video signal timing at each HDMI output. Available in fixed configurations from 4x2 to 16x16, the DXP HD 4K PLUS Series is ideal for applications that require reliable, high-performance matrix switching of 4K/60 HDMI video and audio signals.

Features:

- Supports computer and video resolutions up to 4K/60 @ 4:4:4
- Supported HDMI 2.0b specification features include data rates up to 18 Gbps, HDR, Deep Color up to 12-bit, 3D, HD lossless audio formats, and CEC
- HDMI audio de-embedding with digital S/PDIF and analog stereo audio outputs
- CEC – Consumer Electronics Control capability
- Output volume control
- EDID Minder® automatically manages EDID communication between connected devices
- Support for HDR – High Dynamic Range video
- HDCP 2.2 compliant
- Automatic input cable equalization and output reclocking

Model	Version Description	Part Number
DXP 42 HD 4K PLUS NEW	4x2 4K/60 HDMI with 2 Audio Outputs	60-1678-01
DXP 44 HD 4K PLUS	4x4 4K/60 HDMI with 2 Audio Outputs	60-1493-21
DXP 84 HD 4K PLUS	8x4 4K/60 HDMI with 2 Audio Outputs	60-1494-21
DXP 88 HD 4K PLUS	8x8 4K/60 HDMI with 2 Audio Outputs	60-1495-21
DXP 168 HD 4K PLUS NEW	16x8 4K/60 HDMI with 4 Audio Outputs	60-1496-21
DXP 1616 HD 4K PLUS NEW	16x16 4K/60 HDMI with 4 Audio Outputs	60-1497-21

To learn more, visit extron.com/DXP4KPLUS

AUDIO ACCESSORIES

HAE 100 4K Plus
4K/60 HDMI Audio De-Embedder

The Extron HAE 100 4K Plus is a high performance 4K/60 audio de-embedder that extracts the audio from an HDMI signal. The HAE 100 4K Plus provides an analog output for stereo or dual mono signals, as well as an S/PDIF digital audio output that supports two-channel or Dolby® and DTS® multi-channel formats. It is HDCP compliant, supporting data rates up to 18 Gbps, HDR, 12-bit Deep Color, 3D, and lossless audio formats. The HAE 100 4K Plus is equipped with integrator-friendly features such as a buffered HDMI video output with EDID Minder®, HDMI input cable equalization, and comprehensive LED status display.

- FEATURES
- De-embeds two-channel analog and S/PDIF digital audio from an HDMI signal
 - **NEW** Supports 4K/60 @ 4:4:4
 - **NEW** Supported HDMI 2.0b specification features include data rates up to 18 Gbps, HDR, Deep Color up to 12-bit, 3D, and HD lossless audio formats.
 - HDCP compliant with user-selectable authorization
 - EDID Minder® automatically manages EDID communication between connected devices
 - Selectable output format

Model	Version Description	Part Number
HAE 100 4K Plus	4K/60 HDMI Audio De-Embedder	60-1681-01



18 Gbps
4K/60 4:4:4

HAI 100 4K Plus
4K/60 HDMI Audio Embedder

The Extron HAI 100 4K Plus is a high performance 4K/60 audio embedder that embeds either two-channel analog audio, or S/PDIF digital audio in two-channel or multi-channel formats onto the HDMI output signal. The HAI 100 4K Plus includes an HDMI input, analog stereo audio, and S/PDIF audio inputs that support two-channel or Dolby® and DTS® multi-channel formats, as well as an HDMI output. It is HDCP compliant, supporting data rates up to 18 Gbps, HDR, 12-bit Deep Color, 3D, and lossless audio formats. The HAI 100 4K Plus includes integrator-friendly features such as adjustable gain control for the analog audio input, EDID Minder®, HDMI input cable equalization, and comprehensive LED status display.

- FEATURES
- Embeds two-channel analog or S/PDIF digital audio onto an HDMI signal
 - Supports two-channel stereo analog audio, or two-channel or multi-channel S/PDIF digital audio
 - **NEW** Supports 4K/60 @ 4:4:4
 - **NEW** Supported HDMI 2.0b specification features include data rates up to 18 Gbps, HDR, Deep Color up to 12-bit, 3D, and HD lossless audio formats.
 - HDCP compliant with user-selectable authorization
 - EDID Minder® automatically manages EDID communication between connected devices

Model	Version Description	Part Number
HAI 100 4K Plus	4K/60 HDMI Audio Embedder	60-1682-01



18 Gbps
4K/60 4:4:4

XPA ULTRA

POWER AMPLIFIERS



The World's Only 8 Channel Half-Rack Amp Just Got More Powerful Now Offering Eight 75 Watt Channels

Engineered for Your Success



With exceptional channel density, the XPA U 758 lets you install sixteen 75 watt channels in just one rack space. This ENERGY STAR qualified audio power amplifier delivers eight 75 watt channels in a half rack, 1U, convection cooled, plenum rated enclosure that includes rack mount hardware. The XPA U 758 offers unprecedented power and channel density with the ability to install units without using rack spaces for ventilation, conserving precious rack space. It features a highly efficient advanced Class D amplifier design with power factor correction, ultra low inrush current, defeatable auto-standby with fast wake up, and our patented CDRS – Class D Ripple Suppression.

Fast Wake Up From Standby

The XPA U 758 meets ENERGY STAR qualification requirements with an auto power-down feature that places the amplifier into standby after 25 minutes of inactivity. It silently comes out of standby upon detection of signal in under 100 milliseconds, fast enough that the beginning of sound is not cut off. The XPA Ultra provides the ability to defeat auto-standby while maintaining ENERGY STAR status.

Features:

- **NEW** 75 watts rms output power per channel at 8 ohms
- **NEW** Eight channels in a 1U, half rack width enclosure - rack mount hardware included
- **NEW** Defeatable auto-standby with fast wake up
- ENERGY STAR® qualified amplifier
- Extron Patented CDRS™ - Class D Ripple Suppression
- Convection cooled, fanless operation - can be stacked without extra rack space for ventilation

Model

XPA U 758

Version Description

Eight Channel Amp, 75 watts at 8 ohms

Part Number

60-1863-01

To learn more, visit extron.com/XPAU

NetPA ULTRA

POWER AMPLIFIERS



DANTE DOMAIN
MANAGER READY



Industry-Leading Amplifiers Now with Dante

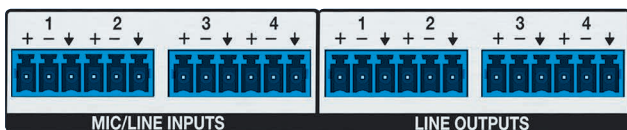
With the NetPA® Ultra amplifiers, you get all the advantages of our award winning XPA Ultra amplifiers combined with the power of Dante network audio distribution. Dante connectivity makes it easy to distribute audio from a centralized location to decentralized remote amplifiers throughout a facility, building, or campus using standard network hardware. These ENERGY STAR qualified amplifiers also offer integrated DSP, allowing a single device to function as a complete audio system endpoint. NetPA Ultra power amplifiers provide system scalability, easier installation, and simplified wiring, while meeting the stringent quality requirements of professional audio installations.

Dante Connectivity

The NetPA Ultra models deliver Dante networked audio to local sound reinforcement systems. They enable decentralized and reliable distribution of Dante audio to multiple speaker zones throughout a facility or building, and are the ideal choice for audio amplification in Dante systems. Offering AES67 for Audio over IP Interoperability and Dante Domain Manager enterprise level network management, the NetPA Ultra power amplifiers can connect to a variety of other devices and network infrastructure.

Analog Inputs & Outputs

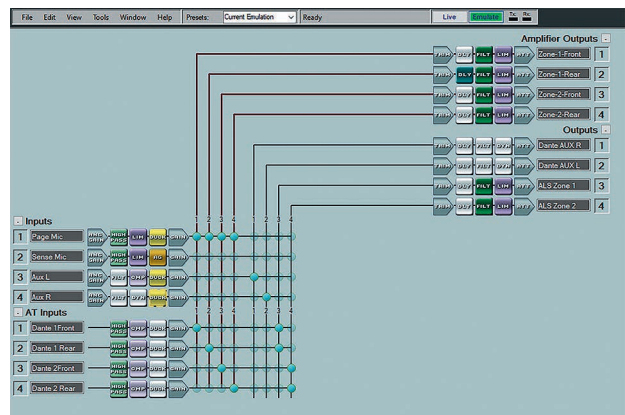
The analog line outputs allow for connection of additional amplifiers, simplifying connection to the source while processing flexibility. The mic/line inputs can be routed to the amplifier or to the Dante network for additional flexibility.



NetPA U 1004 Rear Panel

Mix Matrix with DSP

A built in matrix allows any analog or Dante input to be mixed to any amplifier output, Dante output or analog line output. Included in the mix matrix is essential processing such as gain adjustments, filters, dynamics, and delay. This offers the possibility to create simplified complete systems that include source ducking and routing, without a separate audio processor.



Extron DSP Configurator Software

To learn more, visit extron.com/netpaultra

AUDIO PRODUCTS

NetPA U 1004**Four Channel Power Amplifiers with Dante and DSP
100 Watts Per Channel**

The Extron NetPA U 1004 is a Dante-enabled, ENERGY STAR qualified power amplifier that delivers four 100 watt channels in a half rack, 1U, plenum rated enclosure. With its integrated DSP, the NetPA U 1004 includes essential signal processing that offers the ability to meet the requirements of complex, decentralized systems while Dante Domain Manager and AES67 support ensure wide compatibility with enterprise configurations and other network audio devices. Exceptional thermal design provides the ability to install units without using rack spaces for ventilation, conserving precious rack space. The NetPA U 1004 is a highly efficient advanced Class D amplifier that features defeatable auto-standby with fast wake up and our patented CDRS - Class D Ripple Suppression.

FEATURES

- **NEW** Receives audio from the Dante audio network and from analog mic/line level inputs
- 100 watts rms output power per channel at 8 ohms, 4 ohms, or 70/100V
- ENERGY STAR qualified amplifier
- Single and dual rack mount hardware included
- **NEW** New Integrated DSP
- Convection cooled, fanless operation - can be stacked without extra rack space for ventilation
- Defeatable auto-standby and fast wake up
- Extron Patented CDRS™ - Class D Ripple Suppression
- Professional grade signal-to-noise and THD+N performance
- Ultra low inrush current at power up - no need for power sequencing



NetPA U 1004



Model	Version Description	Part Number
NetPA U 1004	Four Channel Dante Amp, 100 watts at 8 or 4 ohms	60-1766-01
NetPA U 1004-70V	Four Channel Dante Amp, 100 watts at 70 volts	60-1766-02
NetPA U 1004-100V	Four Channel Dante Amp, 100 watts at 100 volts	60-1766-12

NetPA U 1002**Two Channel Power Amplifiers with Dante and DSP
100 Watts Per Channel**

The Extron NetPA U 1002 is a Dante-enabled, ENERGY STAR qualified power amplifier that delivers two 100 watt channels in a half rack, 1U, plenum rated enclosure. With its integrated DSP, the NetPA U 1002 includes essential signal processing that offers the ability to meet the requirements of complex, decentralized systems while Dante Domain Manager and AES67 support ensure wide compatibility with enterprise configurations and other network audio devices. Exceptional thermal design provides the ability to install units without using rack spaces for ventilation, conserving precious rack space. The NetPA U 1002 is a highly efficient advanced Class D amplifier that features defeatable auto-standby with fast wake up and our patented CDRS - Class D Ripple Suppression.

FEATURES

- **NEW** Receives audio from the Dante audio network and from analog mic/line level inputs
- 100 watts rms output power per channel at 8 ohms, 4 ohms, or 70/100V
- ENERGY STAR qualified amplifier
- Single and dual rack mount hardware included
- **NEW** New Integrated DSP
- Convection cooled, fanless operation - can be stacked without extra rack space for ventilation
- Defeatable auto-standby and fast wake up
- Extron Patented CDRS™ - Class D Ripple Suppression
- Professional grade signal-to-noise and THD+N performance
- Ultra low inrush current at power up - no need for power sequencing



NetPA U 1002



Model	Version Description	Part Number
NetPA U 1002	Two Channel Dante Amp, 100 watts at 8 or 4 ohms	60-1767-01
NetPA U 1002-70V	Two Channel Dante Amp, 100 watts at 70 volts	60-1767-02
NetPA U 1002-100V	Two Channel Dante Amp, 100 watts at 100 volts	60-1767-12

For updated product availability, go to www.extron.com

DMP 128 FlexPlus

Flexible DSP for Dante Systems



ProDSP

VoIP

Dante



DANTE DOMAIN
MANAGER READY

AES67

EVERLAST
POWER SUPPLIES

The DMP 128 FlexPlus series of compact Dante Digital Matrix Processors features twelve FlexInput channels with full DSP, including AEC, and Dante connectivity, in only a half rack space. With an extensive mix matrix, a USB audio interface, and analog compatibility, the DMP 128 FlexPlus provides the ability to easily connect and route multiple types of source signals to accommodate diverse analog and digital system requirements.

FlexPlus - Ideal for Multiple Dante Sources

The Dante-enabled DMP 128 FlexPlus series is ideal for applications that utilize Dante ceiling microphone arrays and other Dante-enabled devices. Featuring network connectivity for up to 48 Dante sources and 24 Dante destinations along with a built-in two-port Gigabit switch, the DMP 128 FlexPlus enables the creation of simplified, cost effective audio systems

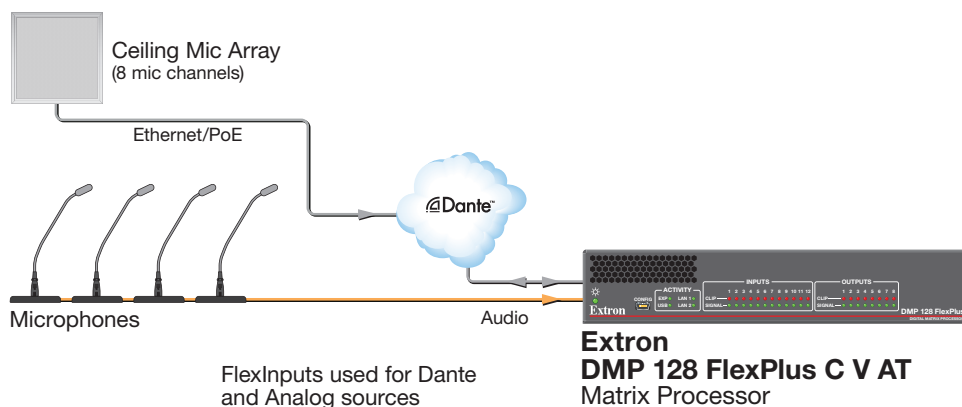
FlexInputs

All twelve main DSP channels of the DMP 128 FlexPlus offer FlexInput source selection to route any Dante input, expansion input, or one of the four mic/line inputs, to a main DSP channel. This enables the DMP 128 FlexPlus to process audio from any source with the full range of DSP capabilities, including AEC.

Features:

- 60 total inputs and 32 total outputs
- 48x24 Dante audio networking
- Dante Domain Manager and AES67 support
- Twelve full DSP channels with AEC
- USB Audio interface
- Up to eight VoIP lines
- ACP Audio Control Panel compatible
- Compact half rack size

To learn more, visit extron.com/flexplus



AUDIO PRODUCTS

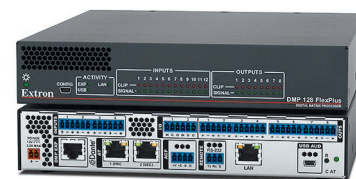
DMP 128 FlexPlus

ProDSP Dante Digital Matrix Processors

The DMP 128 FlexPlus series of compact Dante Digital Matrix Processors features twelve FlexInput channels with full DSP, including AEC, and Dante connectivity, in only a half rack space. With an extensive mix matrix, a USB audio interface, and analog compatibility, the DMP 128 FlexPlus provides the ability to easily connect and route multiple types of source signals to accommodate diverse analog and digital system requirements. For collaboration applications, the V model includes up to eight VoIP lines. Featuring an ACP bus for audio control panels, an expansion port for bidirectional digital audio connection with a DTP CrossPoint or another DMP, eight audio file players, and configurable macros, the DMP 128 FlexPlus can be used anywhere from a collaboration space, to a large conference room.

FEATURES

- Two models with 60 total inputs and 32 total outputs
- 48x24 Dante audio networking with Dante Domain Manager and AES67 support
- Twelve channels of AEC - acoustic echo cancellation
- **NEW** All models include a configurable USB Audio interface
- V model includes up to eight VoIP lines that support generic Session Initiation Protocol - SIP 2.0 connectivity per RFC 3261
- Compact half rack size



DMP 128 FlexPlus C AT

VoIP

Dante®

NOW SHIPPING

Model	Version Description	Part Number
DMP 128 FlexPlus C AT	Dante Digital Matrix Processor w/ 12 AEC	60-1820-10
DMP 128 FlexPlus C V AT	Dante Digital Matrix Processor w/ 12 AEC and VoIP	60-1821-10

DMP 64 Plus

6x4 ProDSP Digital Matrix Processors

The Extron DMP 64 Plus series of compact Digital Matrix Processors features six DSP input channels with AEC, in only a half rack space. With a flexible mix matrix, a USB audio interface, and 6x4 analog connectivity, the DMP 64 Plus provides the ability to easily connect and route signals to accommodate system requirements. The AT models can be powered by PoE+ and provide 32x16 Dante connectivity for popular Dante microphone arrays, and other Dante devices, while the V models include up to eight VoIP lines for collaboration applications. Featuring an ACP bus for audio control panels, an expansion port for bidirectional digital audio connection with a DTP CrossPoint® or another DMP, eight audio file players, and configurable macros, the DMP 64 Plus can be used in a wide variety of smaller systems.

FEATURES

- Four models with 6 mic/line inputs and 4 line outputs
- Six channels of AEC - acoustic echo cancellation
- **NEW** All models include a configurable USB Audio interface
- AT models provide Dante audio networking with Dante Domain Manager and AES67 support
- V models include up to eight VoIP lines
- Compact half rack size



DMP 64 Plus C AT

VoIP

Dante®

NOW SHIPPING

Model	Version Description	Part Number
DMP 64 Plus C	6x4 Digital Matrix Processor w/ AEC	60-1823-01
DMP 64 Plus C AT	6x4 Digital Matrix Processor w/ AEC and Dante	60-1823-10
DMP 64 Plus C V	6x4 Digital Matrix Processor w/ AEC and VoIP	60-1824-01
DMP 64 Plus C V AT	6x4 Digital Matrix Processor w/ AEC, VoIP, & Dante	60-1824-10

For updated product availability, go to www.extron.com

AUDIO PRODUCTS

XMP 240
Expansion Matrix Processor

The XMP 240 Expansion Matrix Processor features an extensive mix matrix with 24 channels of AEC and 48x48 Dante connectivity in only a half rack space. The XMP 240 can also be used standalone for matrix processing in an all network audio system. When connected to a DMP Plus Series processor via Dante or the EXP expansion port, a complete system is created that features up to 36 channels of AEC, a USB audio interface, analog connectivity, and optional VoIP. A system expanded with an XMP 240 is capable of supporting multiple beam forming microphone arrays alongside numerous other Dante sources, with enough outputs to support multiple zones and destination devices. Ideal for network audio systems based on Dante or AES67, the XMP 240 allows for high channel count audio input and output processing.

- FEATURES
- 24 channels of AEC - acoustic echo cancellation
 - Dante audio networking with Dante Domain Manager and AES67 support
 - Extensive mix matrix with input and output processing
 - FlexInput capability on all inputs for input source selection
 - Macros allow the sequencing of commands that can be sent to the local device or external devices via the LAN port
 - Compact half rack size



Model	Version Description	Part Number
XMP 240 C AT	Expansion Matrix Processor w/ 24 AEC and Dante	60-1836-01

DAC 102
Two Channel Digital to Analog Audio Converter

The DAC 102 is a two channel digital to analog audio converter. It accepts two channels of uncompressed digital audio signals up to 24-bit, 192 kHz, from either a TOSLINK or coaxial S/PDIF source, and converts the signal to balanced/unbalanced analog audio. An integrated remote volume control port allows for output level adjustment and mute control when used with compatible VCM & MLC analog volume controllers. The small form factor and included ZipClip 25 easily accommodates installations where space is limited.

- FEATURES
- Provides two channel digital audio to analog conversion from a TOSLINK or coaxial S/PDIF source
 - Remote volume port
 - Small form factor
 - Lip sync correction up to 100 ms
 - ZipClip 25 included



NOW SHIPPING

Model	Version Description	Part Number
DAC 102	Two Channel Digital to Analog Audio Converter	60-1811-01

ARCHITECTURAL CONNECTIVITY

Cable Cubby Drawer

Under-Table Cable Access Drawer for AV Connectivity and Power

The Extron Cable Cubby® Drawer is a modular, under-table mounted cable access drawer for AV connectivity and optional USB power on tables, desks, or other furniture. When open, its flexible design facilitates easy access to connected cables, as well as stored devices such as display remotes, a mouse, keyboard, or portable devices. The smooth-gliding drawer features AV connectivity openings located toward the back of the compartment that accommodate up to six, single-space AAP™ AV Connectivity Modules. An integrated cable management system enables routing of cables to an AV system for streamlined installation. The Cable Cubby Drawer has a black finish and the drawer front can be customized using an integrator-provided veneer or façade.

FEATURES

- Mounts directly to the under surface of furniture without the need for cutting into the surface
- Interior tray holds mice, display remotes, cables, or a keyboard
- Accommodates up to six, single-space AAP™ AV Connectivity Modules:
 - CCD 220 holds four single-space or two double-space AAP modules
 - CCD 320 holds six single-space or three double-space AAP modules
- Custom façade can be attached by the integrator to the front of the drawer to match the furniture finish
- Friction catch secures drawer in open and closed positions
- Integrated track facilitates easy cable management between the furniture and the floor box
- Optional USB PowerPlate module provides USB power for mobile devices and laptops

Model	Version Description	Part Number
CCD 220	Under-table Drawer for 4 AAP Modules	70-1277-02
CCD 320	Under-table Drawer for 6 AAP Modules	70-1278-02



CCD 220 shown with optional items and connector plates



Detail of CCD 220 Modular Connector Panel



CCD 320 shown with optional items and connector plates

AC+USB 300 Series Power Modules

Power Modules for Cable Cubby Series and Select TouchLink Enclosures

Extron AC+USB 300 Series power modules for Cable Cubby® Series and select TouchLink® enclosures are available with discrete AC power outlets for the US, Europe, and other major world markets. Modules provide up to two unswitched AC outlets plus USB Type-C® and USB Type-A power outlets. AC+USB 311 US models feature two AC outlets plus a USB Type-C outlet and a USB Type-A outlet for a combined total up to 55 watts of USB power. Non-US models include a USB Type-C outlet and a USB Type-A outlet, providing a combined total up to 47.5 watts of USB power. The US module features an internal power supply; all others include an external Extron power supply. AC+USB 300 Series modules are available for the US, UK, EU, and France, and the Multi-Region model accepts a variety of AC plug types for ultimate flexibility.

FEATURES

- For use with Cable Cubby® Series and select TouchLink® enclosures
- AC power outlets available for US, Europe, and other major world markets
- Features USB Type-C® and USB Type-A power outlets, as well as AC outlets
- US models provide a total of up to 55 watts of USB power
- Non-US modules provide up to 47.5 W of USB combined total power
- Non-US modules include a ZipClip® 200 Mounting Kit to securely mount an Extron power supply onto most surfaces, including tables and lecterns



NOW SHIPPING

Model	Version Description	Part Number
AC+USB 311 US, Cord	US (2) AC, (1) USBC, & (1) USBA Outlets.	60-1782-01
AC+USB 311 UK	UK (1) AC, (1) USBC, & (1) USBA Outlets.	60-1782-02
AC+USB 311 EU	Europe (1) AC, (1) USBC, & (1) USBA Outlets.	60-1782-03
AC+USB 311 FR	France (1) AC, (1) USBC, & (1) USBA Outlets.	60-1782-06
AC+USB 311 MULTI	Multi-Region (1) AC, (1) USBC & (1) USBA Outlets.	60-1782-10
AC+USB 311 US, Conduit	US (2) AC, (1) USBC, & (1) USBA Outlets, Conduit.	60-1782-20

For updated product availability, go to www.extron.com



Our New Surface-Matching Cable Cubby

We are pleased to introduce the Cable Cubby 1252 MS, an elegant, surface-matching cable access enclosure for AV connectivity, control, and power. When the Cable Cubby® lid is closed, it blends into the table surface and is virtually invisible. This makes it an ideal solution for conference tables, lecterns, and other presentation furniture in high-end environments. The lid of the Cable Cubby enclosure serves as a mounting base for various thicknesses of wood, stone, or other finishing material. After precision cutting of the surface opening, the removed material can be attached to the lid. The unique lid and height-adjustable design let the enclosure sit completely flush with the surface. A cable pass-through slot allows cables to remain connected, even when the lid is closed.

Features:

- Unique design virtually disappears into furniture surface
- Integrated lid serves as a mounting base for wood, stone, or other surface-matching material
- Bezel-free, height-adjustable enclosure accommodates any furniture thickness for a flush installation
- Optional Cable Cubby 1252 MS Lid Tray Kit surrounds the cut material for a clean and professional finish
- Allows cable pass-through when lid is closed
- Compatible with ZipClip 100, ZipClip 200, or PMK 155 mounting kits for securing an external power supply or up to half-rack width products directly to the enclosure beneath the surface
- Accommodates AC or AC+USB Power Module, plus up to three Retractor modules, eight AV cables, and/or three AAP™ AV Connectivity Modules
- AC Power and AC+USB power modules are available for US, Europe, and other major world markets
- Compatible with Extron Teamwork® Show Me® Cables that provide the easiest way to present, at the push of a button
- Includes mounting brackets for AAP, Cable Pass-through, and Retractor modules
- The Cable Cubby 1252 MS requires precision surface cutting and professional carpentry skills for proper integration

NOW SHIPPING

Model	Version Description	Part Number
Cable Cubby 1252 MS	Matching Surface Enclosure; Black- AC Not Included	70-1273-01
Cable Cubby 1252 MS Lid Tray Kit	For Cable Cubby 1252 MS; Black Anodized Aluminum	70-1275-01

To learn more, visit extron.com/CC1252MS

ARCHITECTURAL CONNECTIVITY

USB PowerPlate 300 Series

Two Outlet USB Chargers

The Extron USB PowerPlate 300 Series provides AC and/or USB power outlets in a unique design that delivers full power to either USB outlet when a single device is connected. Each model is ideal for use with laptops, tablets, and other high current draw devices. The USB Type-C® outlet supplies up to 45 W of power, while the USB Type-A outlet provides up to 10 W, with a maximum combined power output of 47.5 W when both outlets are in use. Each module includes a highly reliable, Extron-engineered external Everlast™ power supply that meets the Level VI standard for energy efficiency.

FEATURES

- Provides two USB power outlets for charging small laptops, tablets and other mobile devices
- USB Type-C® outlet provides up to 45 W of power and the USB Type-A outlet provides up to 10 W, with a maximum combined power output of 47.5 W
- USB PowerPlate 311 AC AAP includes one unswitched, Edison-style AC power outlet
- AAP™ and MAAP™ modules are available in black, Flex55™ modules are available in black or white
- External Extron Everlast™ power supply included, replacement part #70-1246-01
- Extron Everlast Power Supply is covered by a 7-year parts and labor warranty

Model	Version Description	Part Number
USB PowerPlate 311 AAP	Single-space, Black	60-1783-02
USB PowerPlate 311 AC AAP	One US AC, Double-space, Black	60-1784-02
USB PowerPlate 311 MAAP	Double-space, Black	60-1785-02
Flex55 USB 311 PowerPlate	(1) USB-C & (1) USB-A, Black	60-1786-02
Flex55 USB 311 PowerPlate	(1) USB-C & (1) USB-A, White	60-1786-03



USB PowerPlate 311 AAP



USB PowerPlate 311 AC AAP



USB PowerPlate 311 MAAP



Flex55 USB 311 PowerPlate

NOW SHIPPING

Flex55 AC 101 SW and Flex55 AC 101 UK

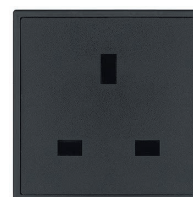
Swiss and UK Power Connectivity for Extron's Elegant Flex55 Mounting Solution

The Flex55 AC 101 SW and Flex55 AC 101 UK are power modules for Flex55™ mounting solutions designed for use in Switzerland and the UK. They feature one unswitched AC power outlet for charging mobile devices such as smartphones, tablets, and laptops. The Flex55 AC 101 SW and Flex55 AC 101 UK modules come equipped with an attached 28 cm IEC pigtail. These power modules are CE compliant.

FEATURES

- Designed for use with Extron's elegant Flex55™ frames and enclosures
- AC power modules offer one unswitched AC power outlet per module
- AC power modules include an attached 11" (0.28 m) IEC pigtail
- All Flex55 100 Series power modules are CE compliant when installed
- Available in a black finish

Model	Version Description	Part Number
Flex55 AC 101 UK	One UK Outlet, Black	60-1692-32
Flex55 AC 101 SW	One Switzerland Outlet, Black	60-1692-42



Flex55 AC 101 UK



Flex55 AC 101 SW

NOW SHIPPING

EWB 112

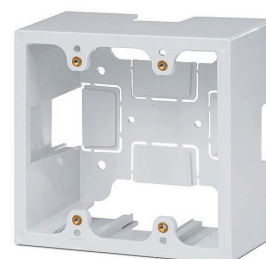
External Wall Box for Extron US Two-Gang Wallplates

The Extron EWB 112 external wall box is an enclosure for US two-gang wallplates. The EWB 112 is designed with sufficient depth to house faceplate wiring and accepts cable runs from a surface-mounted raceway or rear wall space. It mounts two-gang wallplates such as the Extron MLC Plus 100 MediaLink® control panel onto a wall or other flat surface. The EWB 112 is available in a durable white finish.

FEATURES

- Designed to house faceplate wiring and take in cable runs from a surface-mounted raceway or rear wall space
- EWB 112 includes four knockouts for external raceway channels
- Available in a durable white finish

Model	Version Description	Part Number
EWB 112	Two-gang; White	70-1252-23



NOW SHIPPING

For updated product availability, go to www.extron.com

ARCHITECTURAL CONNECTIVITY

SMB 110 Series
White Surface Mount Boxes for US-Gang Products

The Extron SMB 110 Series Surface Mount Boxes are designed for the external mounting of US-gang Extron architectural products, including MediaLink® Plus controllers with AAP™ AV Connectivity Module openings, WPD decorator-style wallplates with Pass-through connectors, and other Extron US-gang decorator-style wallplates and AAP modules. SMB 110 Series Surface Mount Boxes feature an elegant, contoured design that complements any environment, and can be surface mounted on lecterns, tabletops, and other flat surfaces for convenient access to connectors and controls. The optional SMB Table Clamp Kit secures SMB 110 boxes to table edges without marring the surface.

- FEATURES**
- Accepts standard US-gang size Extron architectural products
 - Contoured design complements any environment
 - Suitable for tabletop and lectern applications
 - Available in a one- to five-gang size
 - Optional Table Clamp Kit secures the box without damaging the surface; part # 70-1160-13
 - Available in a white finish



SMB 110 series shown with optional items

NOW SHIPPING

Model	Version Description	Part Number
SMB 111	One-gang, White	70-1286-01
SMB 112	Two-gang, White	70-1286-02
SMB 113	Three-gang, White	70-1286-03
SMB 114	Four-gang, White	70-1286-04
SMB 115	Five-gang, White	70-1286-05
SMB Table Clamp Kit	SMB Table Clamp Kit for 110/210 Series; White	70-1160-13

VM 100
VESA Mount for 2" High Products

The Extron VM 100 VESA mount kit secures Extron products to the back of flat panel displays. It accommodates various product heights and widths, including quarter-rack depth PS Series power supplies. The VM 100 K kit consists of a VESA mounting plate and a product base plate. To attach it to a display, the mounting plate offers a selection of VESA hole patterns. The product base plate provides mounting screw patterns for many Extron products and mounting holes compatible with select, small form factor PCs. Additional VM 100 P product base plates are available for system expansion. The optional VM 100 C cover provides added security and improved aesthetics. Streamlining integration, the VM 100 mounting kit allows products such as a receiver, amplifier, or power supply to be secured discreetly behind a display within minutes.

- FEATURES**
- Conveniently mount devices behind a flat panel display
 - Compact, self-supporting VESA display mounting system for 2" (50.8 mm) high, 6" (152.4 mm) deep, quarter-rack width products
 - VM 100 K consists of a VESA display mounting plate and a VM 100 P product base plate
 - Additional VM 100 P plates available for expansion
 - Compatible with 75 mm x 75 mm and 100 mm x 100 mm VESA hole patterns
 - Supports PS Series Desktop power supplies
 - Optional VM 100 C cover provides added security and improved aesthetics



VM 100 Series shown with optional items

Model	Version Description	Part Number
VM 100 K	VESA Mount Kit; Black	70-1269-01
VM 100 P	Product Base Plate; Black	70-1269-02
VM 100 C	Product Base Cover; Black	70-1269-03

ARCHITECTURAL CONNECTIVITY

Two USB A Female to USB B Female on 10" Pigtails

Architectural Adapter Plate



Black Part #

White Part #

70-1235-02

70-1235-03

One USB A Female to USB B Female on Pigtails

Mini Architectural Adapter Plate



Black Part #

White Part #

70-1236-02

70-1236-03

AAP SuperPlate 103

Architectural Adapter Plate



Black Part #

White Part #

70-1238-02

70-1238-03

One USB A Female to USB B Female on 10" Pigtail, One RJ-45 Female to Female Barrel - Data

Architectural Adapter Plate



Black Part #

White Part #

70-1237-02

One USB A Female to USB B Female on 10" Pigtail

Architectural Adapter Plate



Black Part #

White Part #

70-1249-02

70-1249-03

One USB A Female to One USB B Female on 10" Pigtail

Flex55



Black Part #

White Part #

70-1240-02

70-1240-03

Flex55 SuperPlate 103

Flex55



Black Part #

White Part #

70-1239-02

70-1239-03

For updated product availability, go to www.extron.com

Europe

+31.33.453.4040 / +800.3987.6673
+31.33.453.4050 FAX

Middle East

+971.4.299.1800
+971.4.299.1880 FAX

Asia

+65.6383.4400 / +800.7339.8766
+65.6383.4664 FAX

China

+86.21.3760.1568 / +4000.398766
+86.21.3760.1566 FAX

Japan

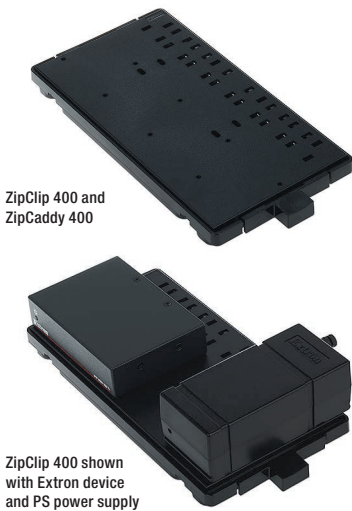
+81.3.3511.7655
+81.3.3511.7656 FAX

SPECIALIZED PRODUCTS

ZipClip 400
Mounting Kit for 1/8, 1/4, and 1/2 Rack Width Products

The Extron ZipClip 400 mounting kit enables various rack-width sized Extron products to be quickly and securely mounted to rack rails, tables, shelves, and lecterns. The kit also works well with select 6"-deep products. This patented two-piece kit includes the ZipClip 400, which mounts easily under a table, on a shelf, or to a rack rail, and the ZipCaddy™ 400. The ZipCaddy provides a secure mounting platform for one or two Extron products, depending on size. The ZipCaddy mounts easily with a simple "click" to securely lock it into place, and it is removed using the quick-release tab. The kit includes 10 each of the ZipClip 400 and the ZipCaddy 400.

- FEATURES
- Enables Extron products to be quickly and securely mounted to rack rails, tables, shelves, and lecterns
 - Wire tie slots allow for proper strain relief and dressing of excess cable
 - Supports eighth-rack, quarter-rack, and half-rack width products
 - Quick release tab allows for easy installation and removal
 - Designed and manufactured by Extron



Model	Version Description	Part Number
ZipClip 400	Qty. 10 mounting clips and accessories	101-031-01

NOW SHIPPING

CABLES & ADAPTERS

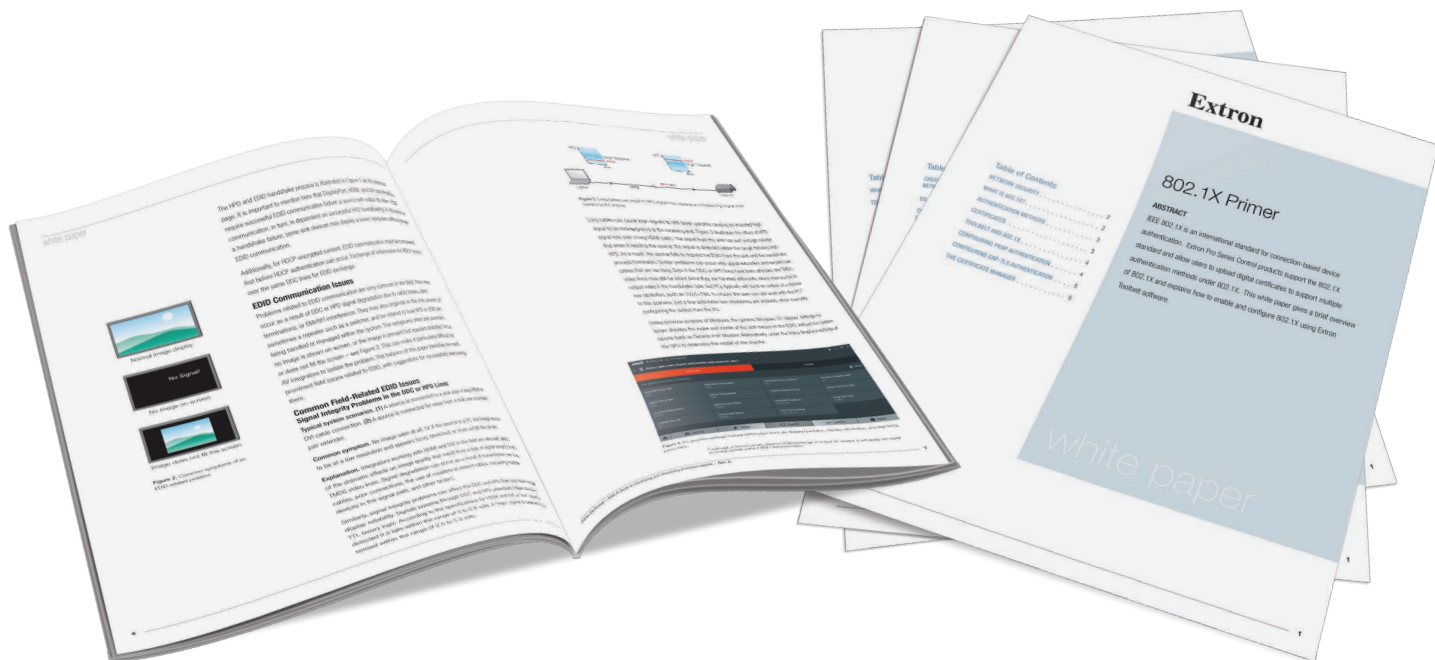
DP Pro Plenum Series
DisplayPort 8K Optical Cables - Plenum

The Extron DP Pro Plenum Series features active, hybrid optical-copper cables for the ultra high-speed transmission of DisplayPort 1.4 signals. These cables support video resolutions up to 8K/30 @ 4:4:4, HDR, EDID, HDCP, CEC, and 32 channels of audio. Ultra-thin 0.18" (4.7 mm) diameter, narrow bend radius cable construction provides ease of installation in tight spaces, including plenum air spaces, without compromising performance. The active cables are unidirectional and draw ultra-low power from the connected DisplayPort devices. DP Pro Plenum Series cables are available in lengths from 25 feet to 150 feet (7.6 meters to 45.7 meters).

- FEATURES
- Conforms to DisplayPort 1.4 standards
 - Supports data rates up to 32.4 Gbps and video resolutions up to 8K/30 @ 4:4:4
 - Support for HDR - High Dynamic Range video
 - Supports EDID, HDCP, and CEC
 - Flexible, ultra-thin 0.18" (4.7 mm) diameter cable
 - Plenum, NEC CMP-rated cable
 - No external power is needed
 - Highly resistant to EMI/RFI interference
 - Color-coded and labeled ends



Model	Version Description	Part Number
DP Pro P/25	25' (7.6 m)	26-727-25
DP Pro P/35	35' (10.6 m)	26-727-35
DP Pro P/50	50' (15.2 m)	26-727-50
DP Pro P/75	75' (22.8 m)	26-727-75
DP Pro P/100	100' (30.4 m)	26-727-100
DP Pro P/125	125' (38 m)	26-727-125
DP Pro P/150	150' (45.7 m)	26-727-150



Extron White Papers

AV Technology Strategies and Industry Best Practices

Our latest white papers are valuable tools that enhance your understanding of core AV technologies. Extron white papers are technology focused and are not designed to merely promote our products. They provide detailed data, best practices, and strategies on the latest AV technologies. Written by Extron engineers and experts, our white papers can fire up your industry expertise and help position you for the future.

802.1X Primer

IEEE 802.1X is an international standard for connection-based device authentication. Extron Pro Series control products support the 802.1X standard and allow users to upload digital certificates to support multiple authentication methods under 802.1X. This white paper gives a brief overview of 802.1X and explains how to enable and configure 802.1X using Extron Toolbelt software.

Encryption and Certificates

When AV system designers specify and deploy networked AV systems, security is always a primary concern. This white paper provides a brief overview of certificates and encryption, and how they ensure robust network security. It also explains how Extron Pro Series control processors utilize certificates and encryption, along with industry best practices, to secure the AV control ecosystem.

AV LAN Best Practices

Extron control processors with AV LAN ports offer an increased level of network security and functionality, and there are some basic principles to follow when setting them up which will speed integration, enhance security, and provide long-term success.

Extron Multi-Network Control Processors

Multi-network control processors enable AV system designers to balance the need for access to network resources and network security. This white paper discusses networking strategies for AV control systems and provides strategies to deploying control processors with AV LAN ports using Global Configurator Plus and Professional, Global Scripter, and Toolbelt.

SNMP Primer

SNMP is the standard protocol for managing basic functions on a network. Extron Pro Series control products support the SNMP standard and allow users to update basic information on these devices. This white paper gives a brief overview of SNMP and explains how to enable and configure SNMP using Extron Toolbelt software.

EDID: A Guide to Identifying and Resolving Common Issues

HDMI, DVI, and DisplayPort require successful two-way EDID exchange between a display and a source to establish a connection between them. This paper provides a clear explanation of EDID, and identifies EDID-related issues commonly encountered in the field, with suggested guidelines for successfully resolving them.

To learn more, visit extron.com/WP



Extron Courses and Videos - Anytime. Anywhere.

Online Training That Fits Your Busy Life

The Extron online training portal has been re-engineered from the ground up. It's easier than ever to access the quality Extron training you expect, whenever and wherever you need it. Our new online training site lets you access courses and videos using any desktop, tablet, or mobile device. Several online courses are now available to help you expand your skill set and demonstrate your expertise. All courses and certifications offer continuing education units for AVIXA and BICSI certifications.

Online Offerings

NEW XTP Systems Engineer – XTP-E

Online Certification

- Understand the general principles and best practices of XTP system design
- Identify the functionality of the XTP product line and software applications
- Navigate within the XTP configuration software and become familiar with the layout, functionality, and features
- Demonstrate how to properly design and validate a series of XTP systems

Extron ProDSP Specialist - EDSP

Online Training

- Learn to deploy and maintain AV systems that include Extron ProDSP products
- Explore advanced features within Extron DSP Configurator Software
- Demonstrate mastery of DSP system configuration, control, management, and troubleshooting

AV Associate – AVA

Online Certification

- Comprehensive training on fundamental AV technologies
- Overview of Extron products and applications
- Complete the modules at your own pace for industry-wide accreditation

AV Principles – AVP

Online Training

- Series of no-cost online training sessions can be completed from home or work
- Provides a general understanding of AV technology
- Designed to increase awareness of Extron solutions and system applications

Extron Control Specialist – ECS

Online Certification

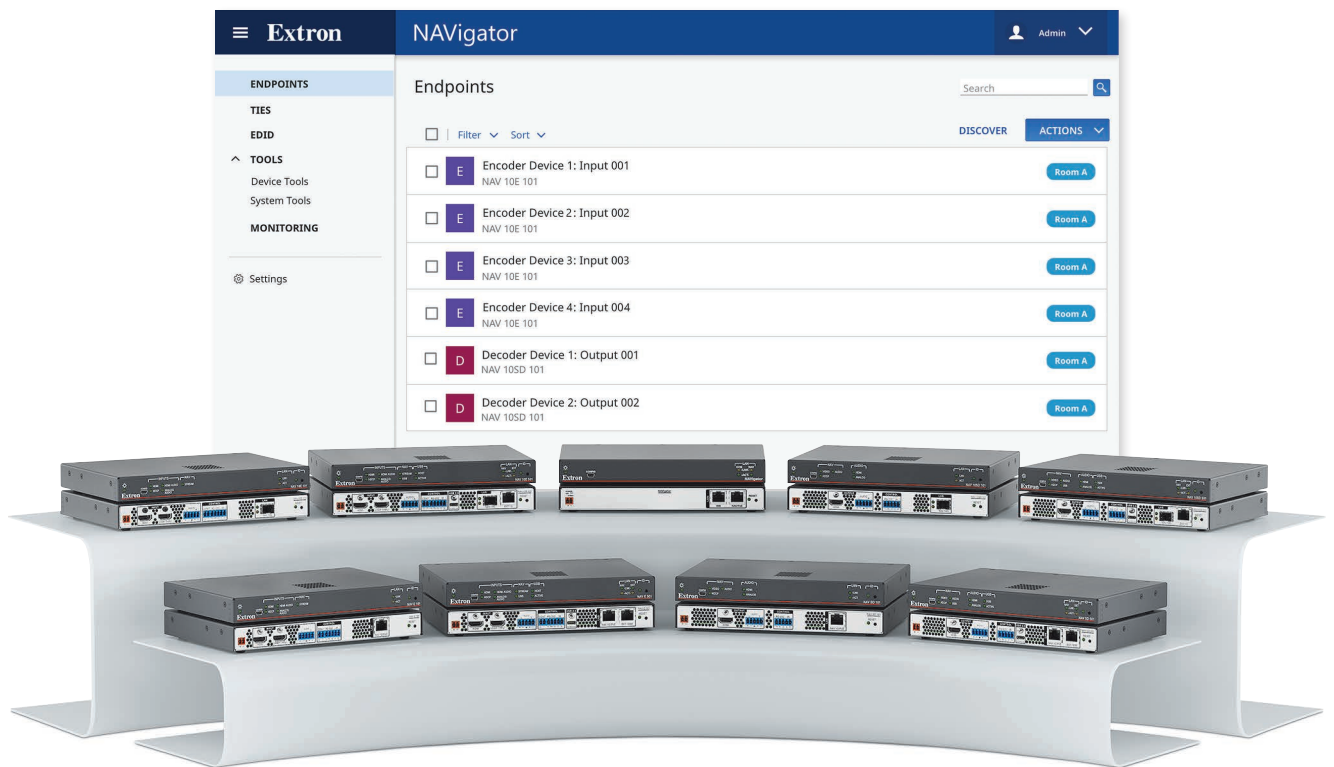
- Learn to successfully deploy and maintain customized AV control systems
- Configure Extron Pro Series control products using Extron Global Configurator™ Plus software
- Focus on control system customization for a wide range of applications and remote system management

How-To Videos

- Short tutorials on the latest features of Extron software, basic AV skills and device installation
- Step-by-step device installation and software click-thru videos
- Helpful instruction that can be easily accessed from anywhere

Learn More

To find out more about Extron Online Training, contact your Extron S3 Customer Support Representative



Network AV Specialist Certification

Learn Best Practices for Networked AV System Design and Deployment

The Extron Network AV Specialist - NAVS certification program prepares individuals to successfully design, deploy, troubleshoot and commission networked AV systems using Extron NAV™ encoders, decoders, and software. Course participants will learn advanced techniques for streaming Pro AV over IP with an emphasis on low latency, bandwidth management, and signal quality. They will also learn to configure point-to-point and multipoint-to-multipoint networked AV systems and best practices for deploying Extron NAVigator, a hardware appliance for the secure management, configuration, and control of NAV Pro AV over IP systems. In addition, the Network AV Specialist program includes opportunities for hands-on experience with system design, configuration, validation, troubleshooting, and commissioning.

With this certification, you will:

- Gain an understanding of Pro AV over IP
- Configure point-to-point and multipoint-to-multipoint networked AV systems
- Get hands-on experience with Extron NAV System encoders, decoders, and software
- Explore when and how to deploy Extron NAVigator Pro AV over IP System Manager
- Design simple to complex AV over IP real world systems
- Learn effective NAV system fault identification and troubleshooting techniques

[Learn More](#)

To find out more about Network AV Specialist Certification,
contact your Extron S3 Customer Support Representative.

Safeguarding the Integrity of AV Systems on Your Network

Extron Products - Secure by Design

Extron AV technology solutions serve the diverse needs of organizations around the world. As more and more customers specify networked AV systems, they are looking to us to provide solutions that are as secure as possible. Our extensive expertise and strategic approach to security help to ensure that Extron products meet customer expectations.

Extron products are secure by design. We are steadfastly committed to making our hardware and software technologies the most secure in the industry. We focus on security in the same way we do other technologies, always pursuing improvement and innovation. Our approach is unique in that, unlike other manufacturers, security is built into our technologies, not just bolted on



[Learn More about AV Network Security](#)

Extron offers a range of resources that provide information on fundamental AV security concepts.

Two new white papers are now available:

Securing Networked AV Products

Describes considerations for securing networked AV systems and the layered approach to good security.

Encryption and Security

Provides a brief overview of certificates and encryption, and how they ensure robust network security.

To learn more, visit extron.com/security



Extron Satisfaction Guarantee

As a leading manufacturer in the AV industry, we are committed to engineering and manufacturing our products to the highest standards of quality, performance, and value. From our advanced product design, manufacturing and quality control procedures to our friendly and knowledgeable support teams, our commitment to satisfy you is paramount. In every interaction with Extron, you can be confident you will receive our S3 commitment to Service, Support, and Solutions. For 37 years, our objective has been to ensure that every customer is completely satisfied with every purchase.

To underscore this commitment, we offer our Satisfaction Guarantee. This means we will work diligently to resolve any issue you have with your purchase until you are completely satisfied. Extron employees are prepared to do whatever it takes to make certain that the entire process of doing business with us is a positive and professionally rewarding experience for you.

I'm so confident in our ability to deliver on this pledge that I back it personally. If you are not satisfied with any part of your transaction with Extron, I want to know. Please contact me at president@extron.com. I will personally address any unresolved customer issue. We greatly appreciate your business. It is our intent to keep you as a customer for life.

A handwritten signature in black ink, reading "Andrew C. Edwards", is positioned above the printed name.

Andrew C. Edwards
President



