

# GuardDog

## Pump Station Management Web Interface

OmniSite's GuardDog Web Interface is the industry's easiest to setup and use!



### Designed for Wastewater Treatment

The GuardDog web interface was specifically designed for wastewater treatment operators to give them the ability to easily view alarms and analyze trends at their sewage pumping stations. The interface is a culmination of ten years of experience, customer suggestions and brainstorming sessions. The result? GuardDog has set the standard for the industry, with its intuitive navigation and graphical interface, any novice can become an expert.

### Simple to Use

GuardDog was designed to be simple to use, while providing best in class features and options. Initial setup of the system is quick and easy. Within minutes, customers will be creating graphs, exporting their data, performing advanced data analysis and more—and they won't need to be an engineer to do it!

### Peace of Mind

Web-based technology makes it possible to monitor pump stations any day, any time, from any computer. With increasing environmental concerns, GuardDog will give wastewater treatment plant operators peace of mind that their equipment is working properly!

### Quick Overview

#### The Essentials:

- Graphing and Charting
- Interactive Mapping
- Exporting to PDF, XLS and DOC
- Notifications via phone, email & text
- Alarm History Logs
- Pump Data, Rainfall and Influent Reports

Plus many more exciting features, take the product tour on the website for more info!

#### Website Highlights:

- Interactive mapping by Yahoo!™
- Quick setup and easy to use
- Intuitive navigation
- Detailed graphs and charts
- Real time weather updates
- Easy to organize and print reports

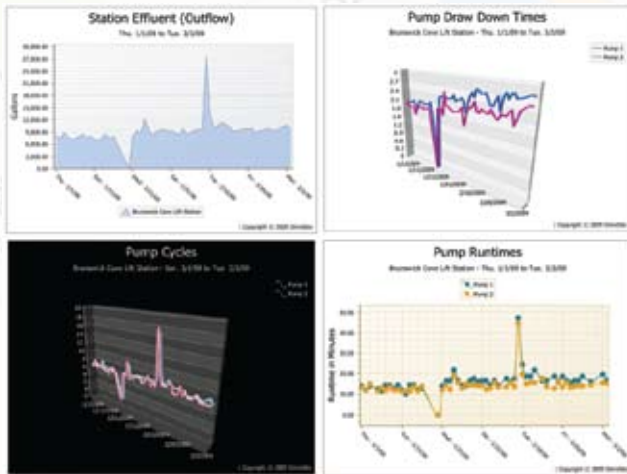
Yahoo!™ is a registered trademark of Yahoo!, Inc all rights reserved.

The GuardDog software provides a powerful and intuitive interface which allows users to manage any and all of their OmniSite units over the internet on any computer, anywhere.



## Analyzing Your Station

Various ways to analyze trends at your pump station, including graphing of pump cycles/runtimes, GPM, rainfall, drawdown times, influent, effluent & analog values.



## Intuitive Navigation

Dropdown Menus and Icon Centers make it easy to navigate through the sites four main sections (status, analyzer, setup and info).



## Viewing Equipment Status

Multiple views to check your equipment's status, including an interactive mapping tool by Yahoo!™.



## iPhone™ Application

Check the status of your alarms and analyze your station at any time and anywhere!



## Download & Export Reports

Customizable reports can be downloaded to .xls, .doc or .pdf files giving you the ability to store data forever!

