



# Rainbow Regatta

## Sailing Instructions

September 7, 2020

Chicago, IL



### 1. RULES

1.1 Races will be governed by the rules as defined in The Racing Rules of Sailing, 2017-2020 edition, as adopted by U.S. Sailing (“RRS”). U.S. Sailing prescriptions will apply, except for the prescriptions to RRS 63.2 and RRS 63.4.

### 2. NOTICES TO COMPETITORS

Notices to Competitors will be published via [www.yachtscoring.com](http://www.yachtscoring.com), and will be sent via email and text to all entered competitors. Additionally, the Race Committee may provide courtesy broadcasts during each Race via VHF 78. These broadcasts are intended to assist all boats in understanding how the race is being conducted. Such broadcasts are not grounds for redress. This changes RRS 62.1.

### 3. AMENDMENTS TO THE SAILING INSTRUCTIONS

Amendments to these Sailing Instructions will be published on each Race’s website no later than 0900 on Monday, September 7th, 2020. As a courtesy, skippers of entered yachts may be sent notice via email and text regarding amendments, and the Race Committee may broadcast information regarding these amendments via VHF 78. Failure to receive these communications shall not be grounds for redress.

### 4. SIGNALS MADE ASHORE

- 4.1 Signals made ashore will be displayed at both Jackson Park Yacht Club and Belmont Park Yacht Club.
- 4.2 When flag AP is displayed ashore, ‘1 minute’ is replaced with ‘not less than 75 minutes’ in the race signal AP.
- 4.3 Information provided via code flags may also be sent via email and text message to skippers of all entered yachts. The Race Committee will provide courtesy broadcasts on VHF 78 to assist sailors in understanding when the race will begin. Failure to receive courtesy emails, text messages, or broadcasts are not grounds for redress. This changes RRS 62.1.

### 5. SCHEDULE OF RACES

The warning signal for the race is Monday, September 7th at 1300 hours.

### 6. RACING AREAS

All races will be conducted in the waters of Lake Michigan. The Starting area will be at 41°52.80 N, 87°34.46 W (Appx. 128° T, 0.9 NM from Chicago Harbor Light).

# Rainbow Regatta

## Sailing Instructions

### 7. CHECK-IN/CHECK-OUT

When arriving at the starting area, boats should approach the Race Committee boat, hail their sail number and receive acknowledgement from the Race Committee.

If a boat must withdraw from the race, it must notify the Race Committee via VHF 78.

### 8. COURSES

8.1 Courses will be as outlined in appendix A to these Sailing Instructions. Courses are anticipated to be 4-11 miles.

8.2 Race committee will determine the course on the day of the race and will signal using a Marker Board on the Committee boat with the letter corresponding to the course in Appendix A. A courtesy VHF Radio Broadcast, announcing the intended course will also be made prior to any preparatory signals. Failure to either hear or receive this broadcast is not grounds for redress or a protest.

### 9. AREAS THAT ARE OBSTRUCTIONS

The area around the pumping stations (cribs) and the marks placed around them by the Coast Guard are hereby designated as an obstruction. Boats shall treat them as such, and not sail between the marks.

### 10. THE START

10.1 Boats shall start between an orange flag flown on an anchored RC vessel and yellow inflatable buoy. The Race Committee may set a guard mark. If so, boats shall not pass between the guard mark and the signal boat.

10.2 During all starting sequences, the Race Committee will fly the appropriate section flag, as set forth in the below table. Boats racing the Cruising section shall fly a rainbow or white flag from the backstay. Racing sections including JAM, PHRF and One Design sections must fly the appropriate section flag on their backstay.

Cruising	White or Rainbow
Jib and Main	V
RACING PHRF	5, 4, 3, 2, 1 as needed
One Design	Class Flag as needed

10.3 The Race Committee may combine classes for a start.

10.4 Boats whose class signal has not been made shall keep clear of the starting area.

10.5 Individual recalls will be signaled in accordance with RRS 29.1. The Race Committee will attempt to hail OCS boats by sail number via VHF 78. Failure to make or hear such hails is not grounds for redress. This changes RRS 62.1(a).

10.6 General recalls will be signaled in accordance with RRS 29.2. The warning signal for restart of a class following a general recall shall be made one minute after the first substitute is removed.

# Rainbow Regatta

## Sailing Instructions

10.7 If the Race Committee needs to postpone the race, it will fly the Answering Pennant (Flag AP). Once the Answering Pennant is lowered, the Race Committee will broadcast the new starting time via VHF 78

### 11. THE FINISH

11.1 All boats will finish between a staff displaying an orange flag on the Race Committee signal boat and an orange floating mark located at 1°52.80 N, 87°34.46 W (Appx. 128° T, 0.9 NM from Chicago Harbor Light). The Race Committee may set a guard mark. If so, boats shall not pass between the guard mark and the signal boat.

### 11. TIME LIMITS

The time limit shall be 1800 hours.

### 12. PROTESTS AND REQUESTS FOR REDRESS

12.1 A boat intending to protest or seek redress shall notify the Race Committee of the sail number(s) of the boat(s) being protested immediately after finishing and shall receive specific acknowledgement.

12.2 Protests and requests for redress shall be filed with the Race Committee by 1200 hours on Tuesday, September 8th, 2020. Protests shall be submitted via the Race website accessible at [www.yachtscoring.com](http://www.yachtscoring.com).

12.3 Protest and redress hearings will be scheduled by the Organizing Authorities.

12.4 Violations of Section 4 of the Notice of Races are protestable only by the Race Committee.

### 13. PENALTY SYSTEM

RRS 44.3 shall apply, modified as follows: “The corrected finish of a boat that accepts a penalty under RRS 44.3 shall be 20% of the number of boats started in that class, taken to the higher whole number, but such penalty shall place a yacht no worse than last in her class. Her adjusted place, for determining her placement in her division, shall be one second greater than the time of the boat placing just before her in her division. This changes RRS A.4.1 and A5.

### 14. SECTION BREAKS AND SCORING

14.1 Section breaks will be set and transmitted to competitors via e-mail or text by 1200 hours on Sunday, September 6th, 2020.

14.2 All boats racing in will be scored using their LMPHRF general purpose time on time rating or if unavailable via a rating assigned by the Organizing Authority. See Notice of Race 7.

### 15. PRIZES

Prizes will be awarded as described in the Notice of Race section 14.

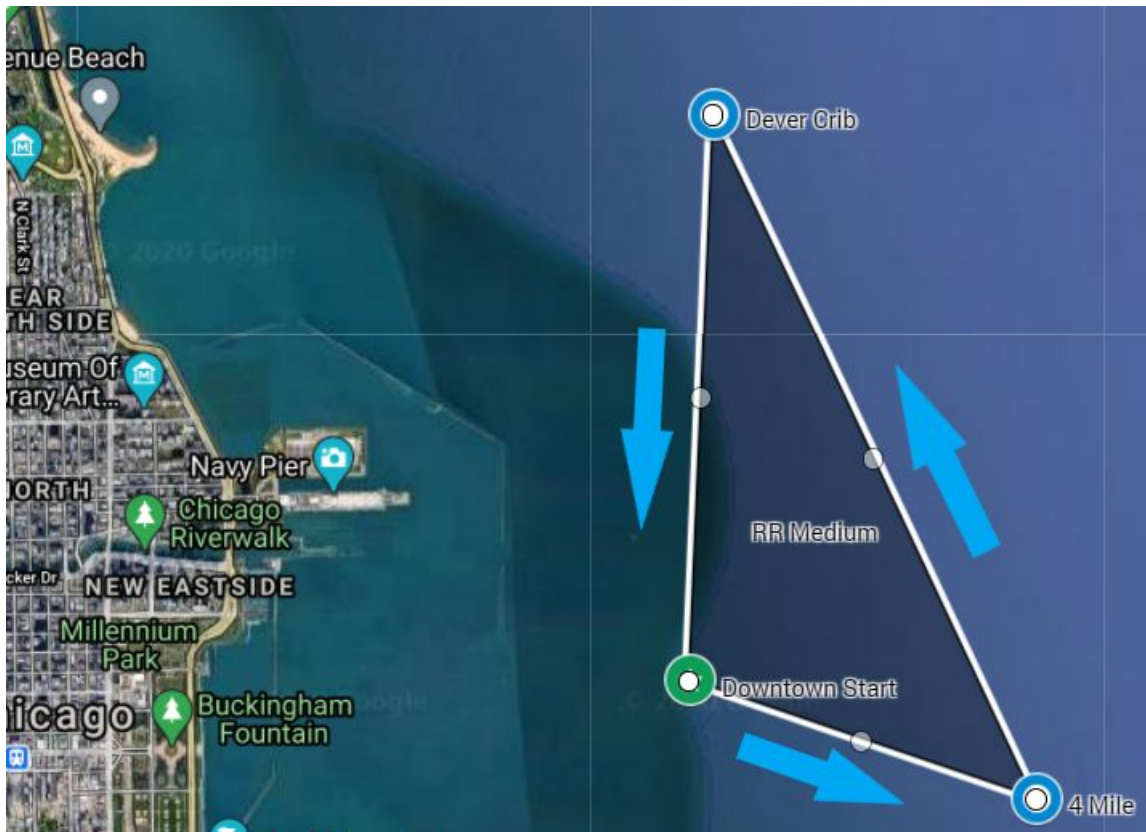
# Rainbow Regatta

## Sailing Instructions

### APPENDIX A - COURSES

**MEDIUM COURSE: "M"** - Approx 6.5NM - Will be signaled will be signaled using a Marker Board on the Committee boat with the letter "M". A courtesy VHF Radio Broadcast, announcing the intended course will also be made prior to any preparatory signals. Failure to either hear or receive this broadcast is not grounds for redress or a protest.

Mark	Location	Rounding
Start - Downtown area	41° 52.80'N, 87° 34.46'W	
4 Mile Crib	41° 52.22'N, 87° 32.45'W	Port (Turn Left)
Harrison Dever Crib	41°54.59 N, 87°34.23 W	Port (Turn Left)
Finish	41° 52.80'N, 87° 34.46'W	



Appendix A - Cont.

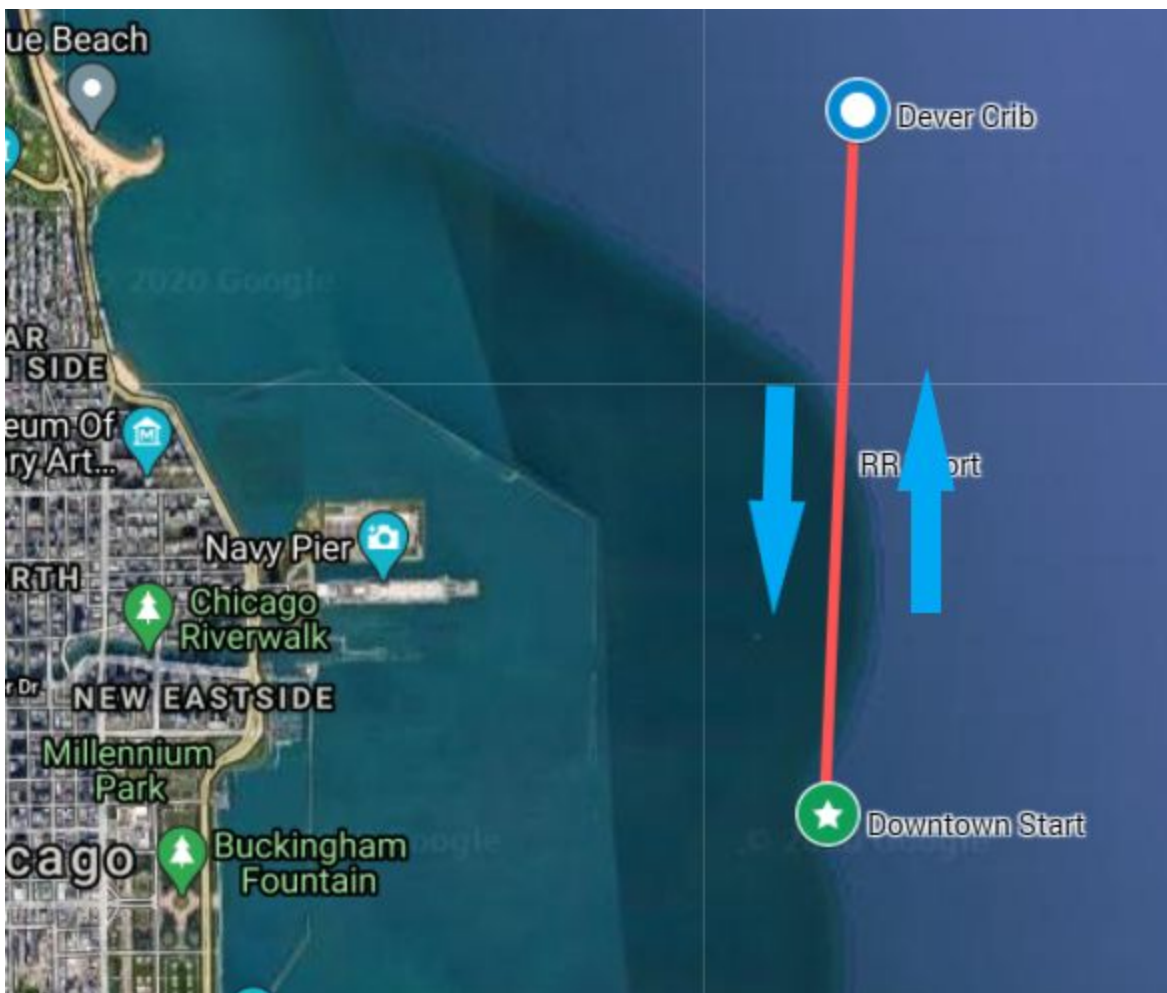
---

# Rainbow Regatta

## Sailing Instructions

**SHORT COURSE: “S” - Approx 4.33NM** - Will be signaled will be signaled using a Marker Board on the Committee boat with the letter “S”. A courtesy VHF Radio Broadcast, announcing the intended course will also be made prior to any preparatory signals. Failure to either hear or receive this broadcast is not grounds for redress or a protest.

Mark	Location	Rounding
Start - Downtown area	41° 52.80'N, 87° 34.46'W	
Harrison Dever Crib	41°54.59 N, 87°34.23 W	Port (Turn Left)
Finish	41° 52.80'N, 87° 34.46'W	



APPENDIX A - Cont.

---

# Rainbow Regatta

## Sailing Instructions

**LONG COURSE: "L" - Approx 10.17NM** - Will be signaled will be signaled using a Marker Board on the Committee boat with the letter "L". A courtesy VHF Radio Broadcast, announcing the intended course will also be made prior to any preparatory signals. Failure to either hear or receive this broadcast is not grounds for redress or a protest.

Mark	Location	Rounding
Start - Downtown area	41° 52.80'N, 87° 34.46'W	
Clemson Shoal Buoy	41° 48.41' N, 87° 32.08' W	Port (Turn Left)
4 Mile Crib	41° 52.22'N, 87° 32.45'W	Port (Turn Left)
Finish	41° 52.80'N, 87° 34.46'W	

