



Rainbow Regatta Chicago

Friday, August 5th, 2022

SAILING INSTRUCTIONS (SIs) - AMENDMENT #1

1 **COURSE:** The following courses may be used.

1.1 **Course 1 (Short):** This course will be signaled using a Marker Board on the Committee boat with the number "1". The total distance of this course is 2.8 N. Mi.

Mark	Approx. Location	Rounding	Approx. Course	Approx. Distance
Start	41° 52.80' N 87° 34.46' W	-	-	-
Four Mile Crib	41° 52.36' N 87° 32.70' W	To Port	109° T	1.4 N. Mi.
Finish	41° 52.80' N 87° 34.46' W	-	289° T	1.4 N. Mi.

1.2 **Course 2 (Medium):** This course will be signaled using a Marker Board on the Committee boat with the number "2". The total distance of this course is 4.4 N. Mi.

Mark	Approx. Location	Rounding	Approx. Course	Approx. Distance
Start	41° 52.80' N 87° 34.46' W	-	-	-
Carter H Harrison Crib	41° 55.00' N 87° 34.35' W	To Port	003° T	2.2 N. Mi.
Finish	41° 52.80' N 87° 34.46' W	-	183° T	2.2 N. Mi.

- 1.3 **Course 3 (Long):** This course will be signaled using a Marker Board on the Committee boat with the number “3”. The total distance of this course is 6.5 N. Mi.

Mark	Approx. Location	Rounding	Approx. Course	Approx. Distance
Start	41° 52.80' N 87° 34.46' W	-	-	-
Four Mile Crib	41° 52.36' N 87° 32.70' W	To Port	109° T	1.4 N. Mi.
Carter H Harrison Crib	41° 55.00' N 87° 34.35' W	To Port	335° T	2.9 N. Mi.
Finish	41° 52.80' N 87° 34.46' W	-	182° T	2.2 N. Mi.

- 2 **MARKS:** For the Four Mile and Carter H Harrison cribs all guard marks for that crib are considered to be part of that mark for the course and must be left to the same side as the crib.

3 **CLASS BREAKS AND STARTING TIMES**

CLASS	CLASS FLAG	WARNING	START TIME	RATINGS
Colgate 26	2	1900	1905	-
JAM	Rainbow flag	1905	1910	All non-spinnaker
PHRF 1	1	1910	1915	All spinnaker

Competitors are not required to display the class flag on their backstay as long as their section assignment is correct on the scratch sheet on YachtScoring.

- 4 **THE START:** The starting line will be between a staff displaying an orange flag on the Race Committee signal boat and a yellow floating mark. This changes item 10.1 of the Sailing Instructions.

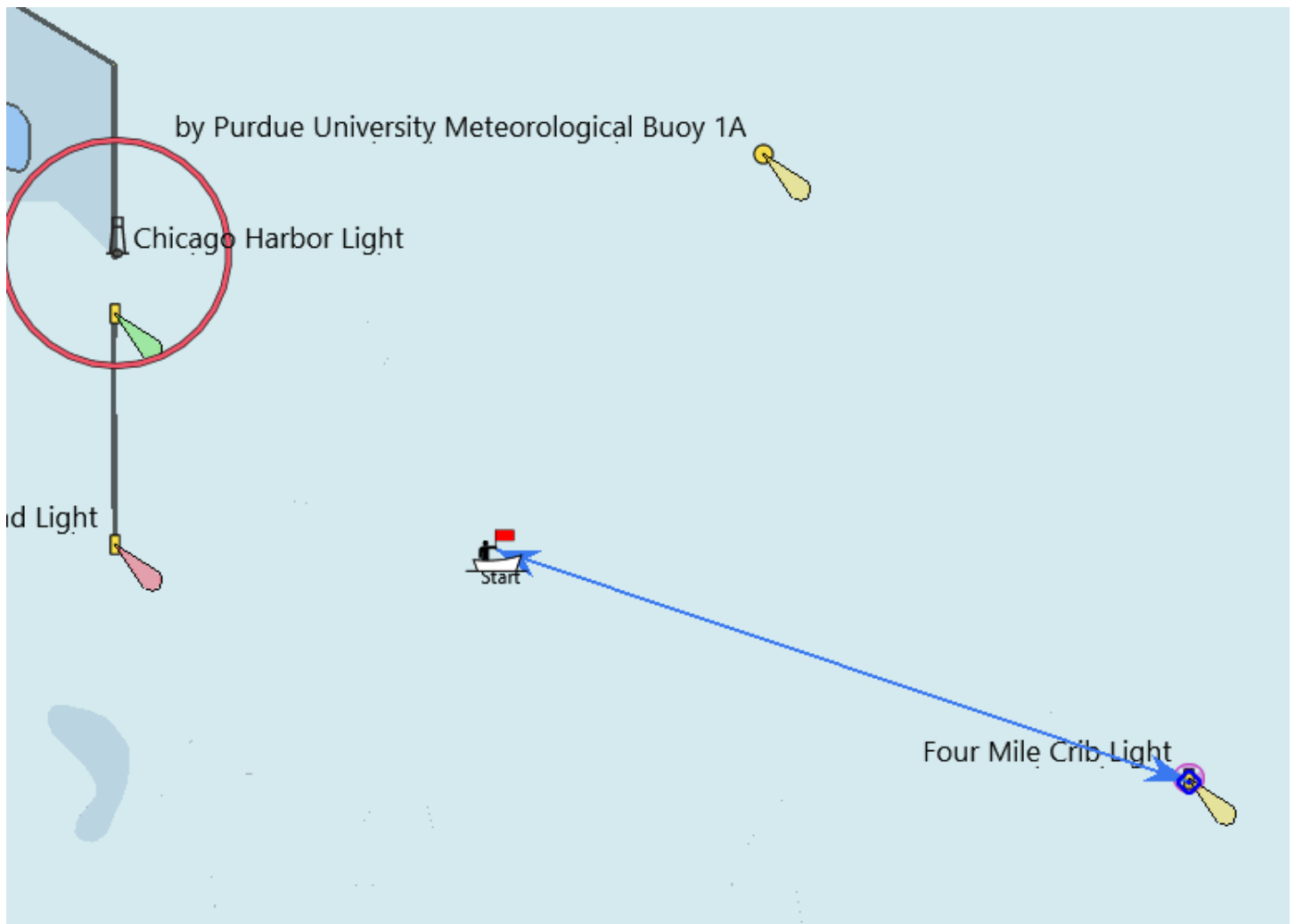
- 5 **THE FINISH:** The finish line will be between a staff displaying a blue flag on the Race Committee signal boat and a yellow floating mark, which should be left to starboard. The Race Committee signal boat shall be left to port. This changes item 11.1 of the Sailing Instructions.

For further information please contact racing@jacksonparkyachtclub.org

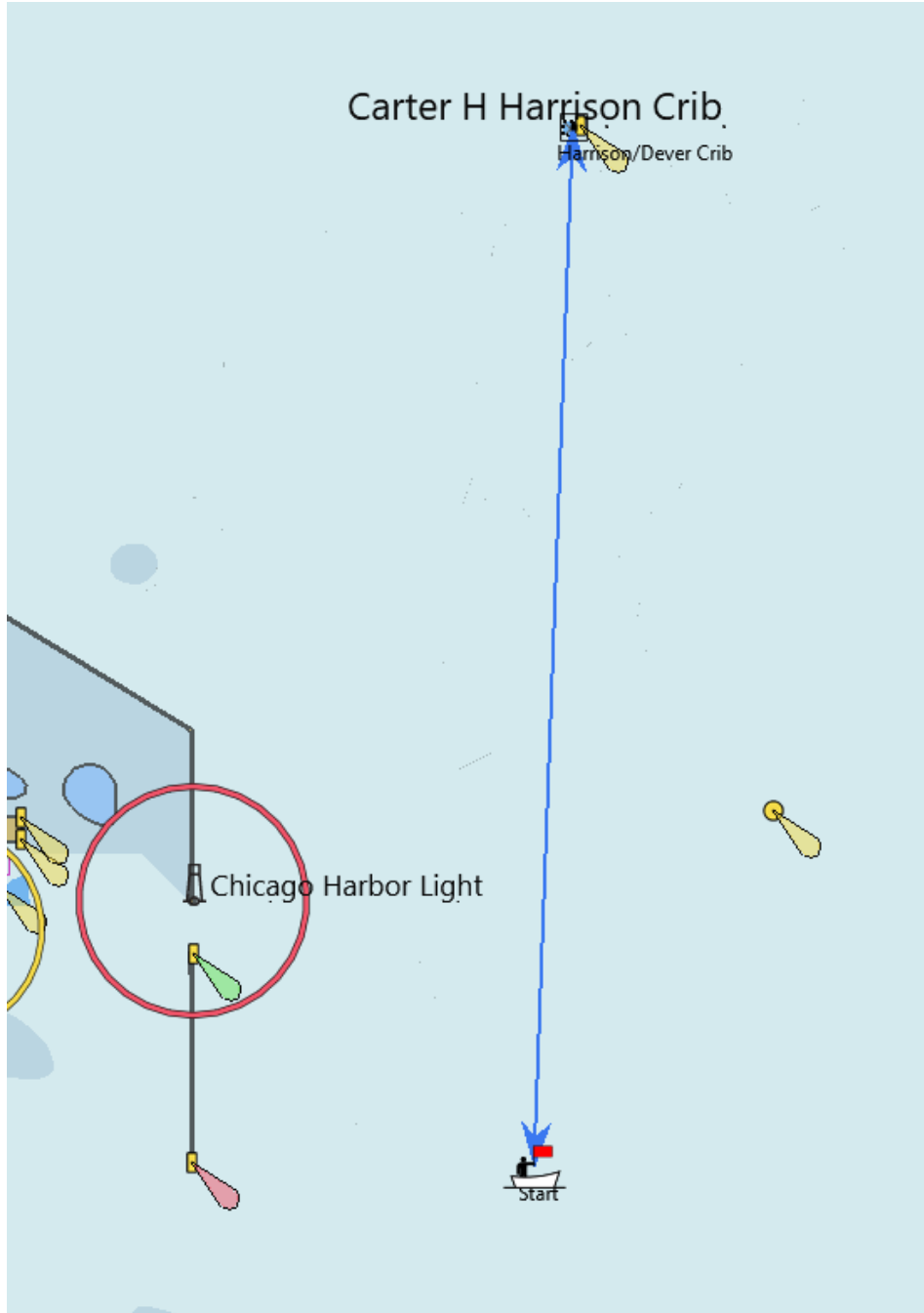
APPROXIMATE COURSE DIAGRAMS

THESE DIAGRAMS ARE NOT TO BE USED FOR NAVIGATIONAL PURPOSES

COURSE 1 (SHORT)



COURSE 2 (MEDIUM)



COURSE 3 (LONG)

