

# SILVER EAGLE™



## MODELS:

**2550KW** 25hp, 50" Deck

**2750KOE** 27hp, 50" Deck

**2760KW** 27hp, 60" Deck

**2760KOE** 27hp, 60" Deck

**2017**  
**COMMERCIAL**



Silver Eagle 2760KW shown\*

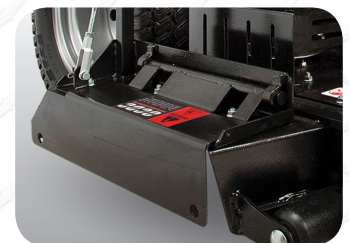
## THE MOST TRIED AND TRUE ZERO-TURN IN THE INDUSTRY.

The **Silver Eagle** was originally conceived as a residential mower, yet proved to withstand rigorous commercial use. Today, the Silver Eagle continues to deliver the same value and performance since its debut over 10 years ago.

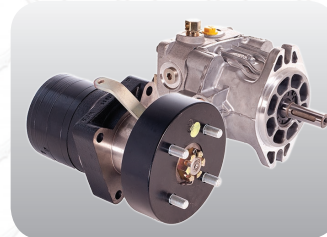
- **High Horsepower** – Choose from a Kawasaki® FX engine or a fuel efficient Kohler® EFI engine up to 27 horsepower to power you through tough jobs.
- **Tried and True Deck** – The Elite X Deck design is a staple piece to Dixie Chopper's reputation of cutting all grass types cleanly in any situation.
- **Mulching Effect** – Add a Twist blade to the existing X-Blade to boost mulching performance.
- **Proven Drivetrain** – Hydro-Gear® pumps and Parker® wheel motors provide a smooth and reliable drive. Backed with a 5-year, 3,000 hour drivetrain warranty.
- **Unique Deck Spindle Package** – Our standard commercial spindle with a cooling fan added to reduce the operating temperature of the belt and spindle, and keep the top of the deck clean from debris.



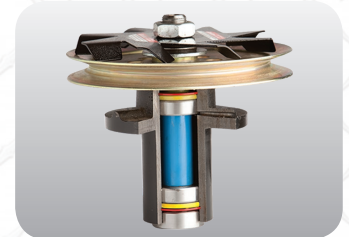
**Springer Forks** – Absorbs bumps for smoother ride - standard on 60" models.



**OCDC** – Open and close the discharge chute on command.



**Pumps & Wheel Motors** – Stronger transmissions for extended system life.



**Spindle Fans** – Cleans the top of the deck and keeps spindles and belts cool.



**50" and 60" Elite X Deck** – Cuts all grass types cleanly in any situation.

**5 YEAR**  
**BUMPER-TO-BUMPER**  
**WARRANTY\***

\*up to 600 hour limited warranty

\*Actual production model may vary

765.246.7737 | [www.dixiechopper.com](http://www.dixiechopper.com)



Model	50" Deck		60" Deck	
	2550KW	2750KOE	2760KW	2760KOE
<b>Engine</b>				
Manufacturer	Kawasaki® FX	Kohler® EFI	Kawasaki® FX	Kohler® EFI
Horsepower	25		27	
Displacement	852cc	824cc	852cc	824cc
Air-cleaner	2 stage			
Cooling	Air cooled			
Starter	Electric			
Engine warranty	3 Year			

<b>Drive System</b>	
Pumps	Hydro-Gear® 12cc
Wheel motors	Parker® DG240
Ground speed	11 mph
Parking brake	Automotive Style
Towing capacity	500 lbs

<b>Mower Deck</b>	
Deck size	50"   60"
Acres/hour	4.4   5.3
Cutting height	1.5" - 4.5"
OCDC (operator controlled discharge chute)	Standard
Deck height adjustments	Manual lift, 1/4" increments
Electric lift	Optional
Deck engagement	Ogura® 250 ft-lbs
Construction	10 ga formed & welded
Top plate	7 ga bolted (not welded)
Blades	3 - 17" x 2.5"   3 - 20.5" x 2.5"
Blade tip speed (approximate)	17,875 fpm   17,399 fpm
Spindles	1.25" effective diameter machined shaft
Spindle housings	Serviceable cast iron
Spindle cooling fans	1   3
Anti-scalp rollers	4
Pulleys	Vented split 3/16" steel deep groove

<b>General</b>	
Battery	12 Volt, 300cca
Digital display	Tachometer & hour meter
Fuel capacity	8 gallons
Rear tires	24 x 12-12 GrassMaster
Front tires	13 x 6.5-6
Frame	Welded 2" x 2" tube, 7 ga formed
Fenders	Stainless steel
Floor-pan	Flip-up, steel
Seat	24" high-back adjustable padded seat w/ armrest, suspension springs
Springer Forks	Optional   Standard

<b>Dimensions</b>	
Overall height	50"
Overall height (rollbar up)	76"
Overall width	55"   65"
Overall length	74"
Overall length (rollbar down)	94"
Weight	1104 lbs   1215 lbs