

XCALIBER™



MODELS:

- 3160KW** 31hp, 60" Deck
- 3360KOE** 33hp, 60" Deck
- 3366KOE** 33hp, 66" Deck
- 3566KW** 35hp, 66" Deck
- 3574KW** 35hp, 74" Deck
- 3574KOE** 35hp, 74" Deck
- 3674BR** 36hp, 74" Deck

2017
INDUSTRIAL



XCaliber 3574KW shown*

THE CHOICE FOR LANDSCAPING PROS.

Professional commercial contractors and large property home owners have come to depend on the XCaliber for its legendary performance. Our flagship mower features:

- **Pure Power** – Models powered with Kawasaki® FX, Vanguard®, or fuel efficient Kohler® EFI engines.
- **X2 Wind Tunnel Deck** – The industry's best cutting deck available in 60", 66", and 74" cutting widths for maximum productivity, while retaining the Wind Tunnel design and industry leading 2-inch blade overlap.
- **Comfort Package** – Our suspension seat and unique Springer Forks make the XCaliber the smoothest riding mower on the market today.
- **Productivity** – Our heavy-duty drivetrain of pumps and wheel motors increases ground speed up to 13 mph to mow over 7 acres per hour.
- **Wide Wheelbase** – An extra wide wheelbase assists in hillside performance and overall ride quality.
- **Most Lifetime Warranties** – Worry-free lifetime warranties on the frame, stainless steel, front forks, steering levers, and front caster bearings.



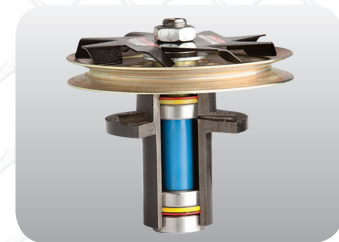
Total Comfort – Suspension seat and Springer Forks for highest quality ride.



Two 6 Gallon Fuel Tanks – More fuel capacity eliminates frequent fill-ups.



Pumps & Wheel Motors – Stronger transmissions for extended system life.



Spindle Fans – Cleans the top of the deck and keeps spindles and belts cool.



X2 "Wind Tunnel" Deck – Increases airflow and reduces build-up inside deck.

5 YEAR
BUMPER-TO-BUMPER
WARRANTY*

*up to 600 hour limited warranty

*Actual production model may vary

765.246.7737 | www.dixiechopper.com



	60" Deck		66" Deck		74" Deck		
Model	3160KW	3360KOE	3366KOE	3566KW	3574KW	3574KOE	3674BR
Engine							
Manufacturer	Kawasaki® FX	Kohler® EFI	Kohler® EFI	Kawasaki® FX		Kohler® EFI	Vanguard®
Horsepower	31	33	33	35			36
Displacement	999cc	824cc		999cc			993cc
Air-cleaner	2 stage						
Cooling	Air cooled						
Starter	Electric						
Engine warranty	3 Year						

Drive System							
Pumps	Hydro-Gear® 21cc						
Wheel motors	Parker® DG335						
Ground speed	13 mph						
Parking brake	Automotive Style						
Towing capacity	2000 lbs						

Mower Deck							
Deck size	60"		66"		74"		
Acres/hour	6.3		6.9		7.8		
Cutting height	1.5" - 5"						
OCDC (operator controlled discharge chute)	Standard						
Deck height adjustments	Manual lift, 1/4" increments						
Electric lift	Optional						
Deck engagement	Ogura® 250 ft-lbs						
Construction	7 ga formed & welded						
Top plate	7 ga bolted (not welded)						
Blades	3 - 21.375" x 2.5"		3 - 23.3" x 2.5"		3 - 26" x 2.5"		
Blade tip speed (approximate)	17,874 fpm		18,004 fpm		18,015 fpm		
Spindle housings	1pc keyless sealed cast iron						
Spindles	1.25" effective diameter machined shaft						
Anti-scalp rollers	6						
Spindle cooling fans	3						
Pulleys	Vented split 3/16" steel deep groove						

General							
Battery	12 Volt, 350cca						
Digital display	Tachometer & hour meter						
Fuel capacity	12 gallons						
Rear tires	25 x 12-12 GrassMaster						
Front tires	15 x 6-8						
Frame	Welded 1" x 2" tube, 7 ga formed						
Fenders	Stainless steel						
Floor-pan	Removable, steel						
Seat	Full suspension, adjustable seat w/ armrest						
Springer Forks	Standard						

Dimensions							
Overall height	52"				53"		
Overall height (rollbar up)					77.5"		
Overall width	65"		72"		76"		
Overall length	85"				86"		
Overall length (rollbar down)	88.5"				89.5"		
Weight	1390 lbs		1445 lbs		1482 lbs		