

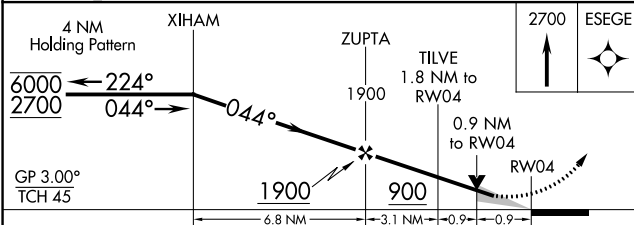
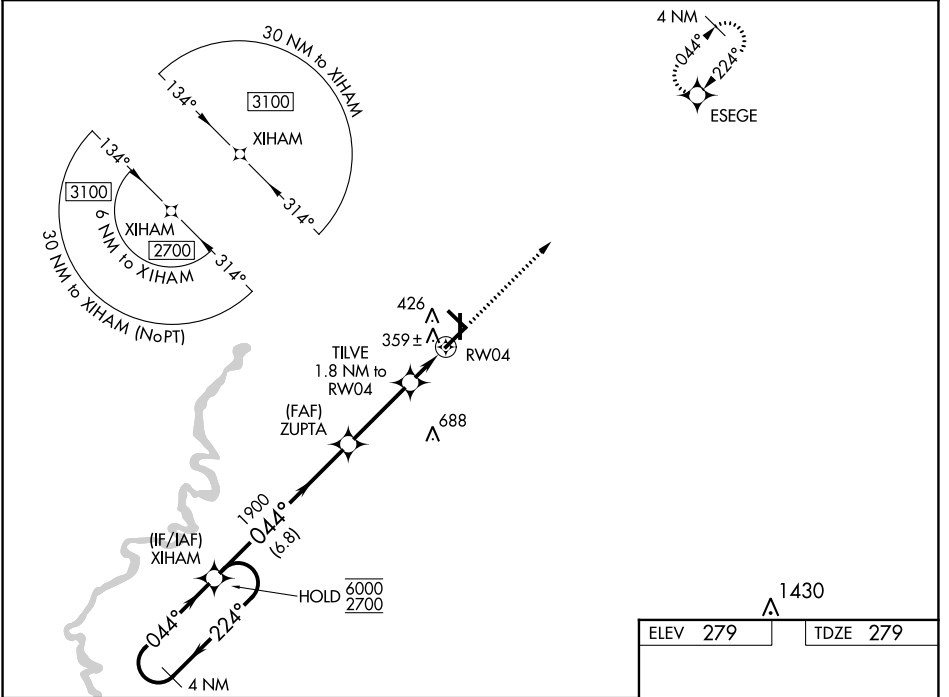
WAAS CH 77825 W04A	APP CRS 044°	Rwy Idg TDZE Apt Elev	6001 279 279
--	------------------------	-----------------------------	---

RNAV (GPS) RWY 4

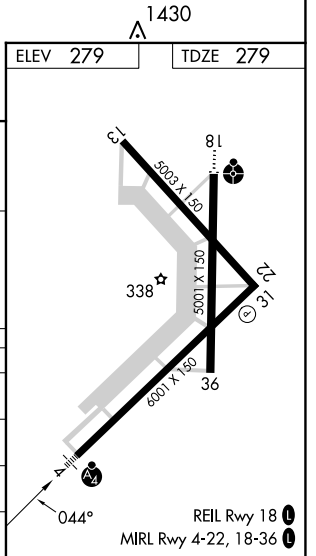
WALNUT RIDGE RGNL (A.R.G)

RNP APCH - GPS.	MALSF	MISSED APPROACH: Climb to 2700 direct ESEGE and hold.
<p>⚠ For uncompensated Baro-VNAV systems, LNAV/VNAV NA below -1.5°C or above 54°C. For inop ALS, increase LNAV Cat C/D visibility to 1½ SM. Inop table does not apply to LPV and LNAV/VNAV all Cats.</p>		

AWOS-3PT 126.525	MEMPHIS CENTER 120.075 289.4	UNICOM 122.8 (CTAF) 0
----------------------------	--	---------------------------------



CATEGORY	A	B	C	D
LPV DA		529-¾	250 (300-¾)	
LNAV/VNAV DA		529-¾	250 (300-¾)	
LNAV MDA		620-¾	341 (400-¾)	
C CIRCLING	840-1	561 (600-1)	840-1½ 561 (600-1½)	1000-2¼ 721 (800-2¼)



SC-1, 16 MAY 2024 to 13 JUN 2024

SC-1, 16 MAY 2024 to 13 JUN 2024

WAAS CH 82125 W22A	APP CRS 224°	Rwy Idg TDZE Apt Elev	6001 274 279
--	------------------------	-----------------------------	---

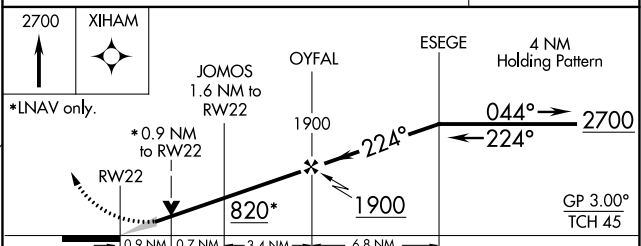
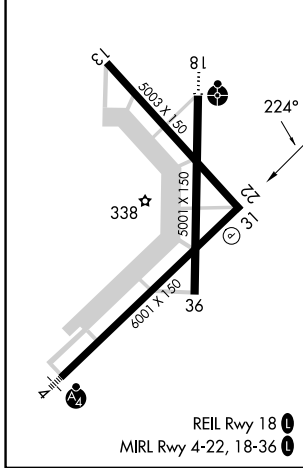
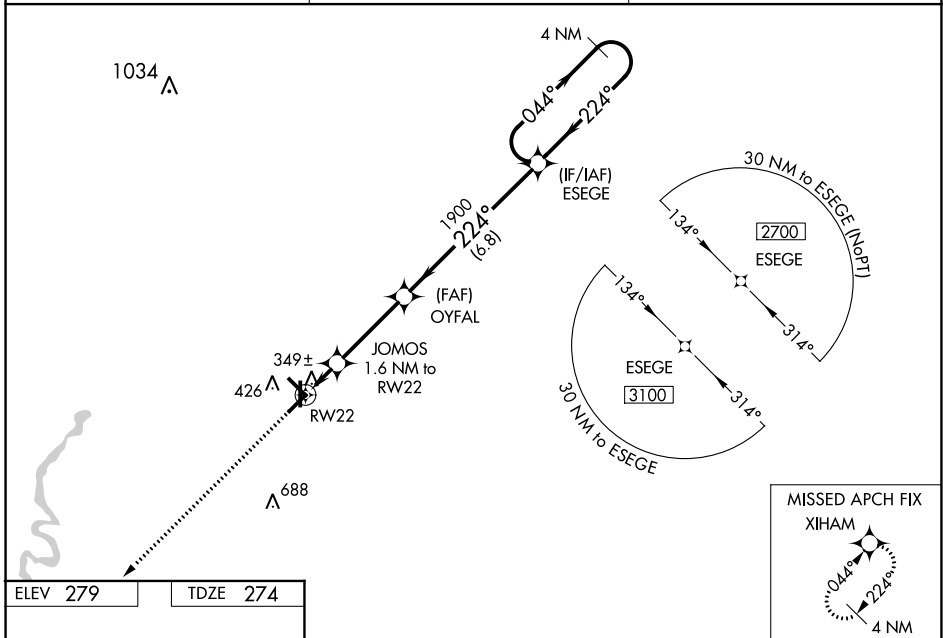
RNAV (GPS) RWY 22

WALNUT RIDGE RGNL (ARG)

⚠ Baro-VNAV NA when using Jonesboro altimeter setting. For uncompensated Baro-VNAV systems, LNAV/VNAV NA below -15°C (5°F) or above 42°C (107°F). DME/DME RNP-0.3 NA. VDP NA with Jonesboro altimeter setting. When local altimeter setting not received, use Jonesboro altimeter setting and increase LPV and LNAV/VNAV DA to 578 feet, and all MDAs 60 feet; increase LNAV Cats C/D visibility 1/8 SM and Circling Cat D visibility 1/4 SM.

⚠ MISSED APPROACH: Climb to 2700 direct XIHAM and hold.

AWOS-3PT 126.525	MEMPHIS CENTER 120.075 289.4	UNICOM 122.8 (CTAF) 📻
----------------------------	--	--



CATEGORY	A	B	C	D
LPV DA		524-1	250 (300-1)	
LNAV/VNAV DA		524-1	250 (300-1)	
LNAV MDA		600-1	326 (400-1)	
CIRCLING	760-1	481 (500-1)	800-1½ 521 (600-1½)	1000-2¼ 721 (800-2¼)

SC-1, 16 MAY 2024 to 13 JUN 2024

SC-1, 16 MAY 2024 to 13 JUN 2024

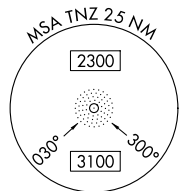
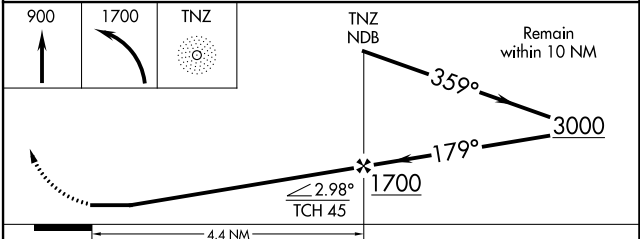
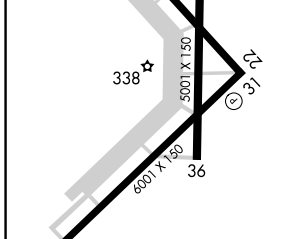
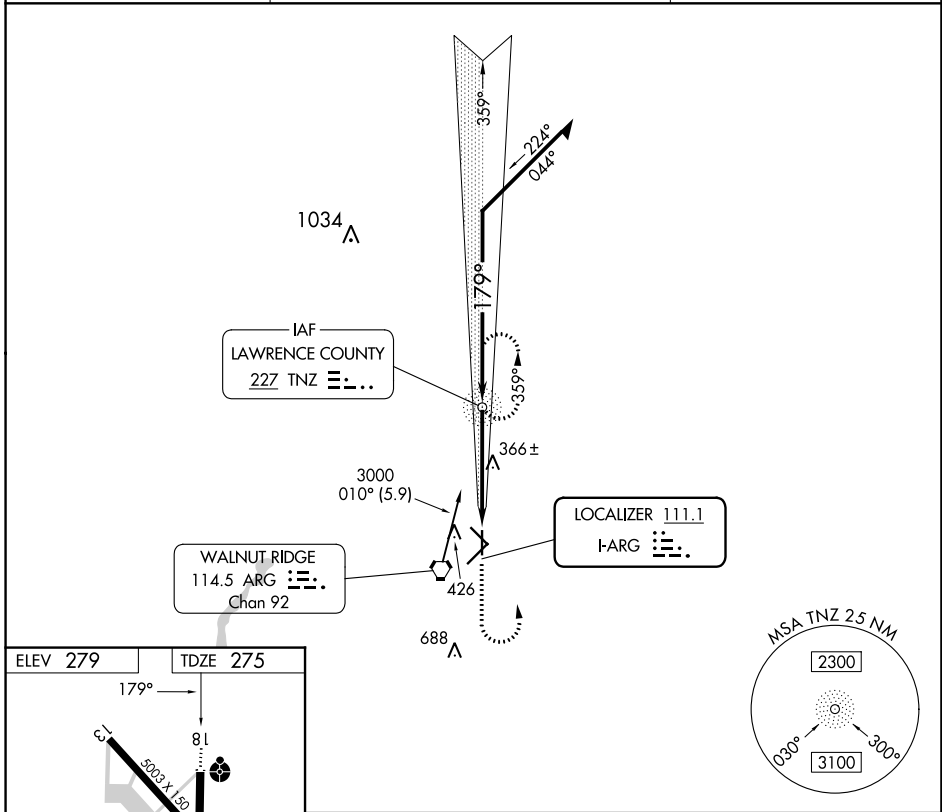
LOC I-ARG 111.1	APP CRS 179°	Rwy Idg TDZE Apt Elev	5001 275 279
---------------------------	------------------------	-----------------------------	---

LOC RWY 18

WALNUT RIDGE RGNL (ARG)

ADF required.	ODALS	MISSED APPROACH: Climb to 900 then climbing left turn to 1700 direct TNZ NDB and hold.
Inop table does not apply to S-18 Cat D. NA		

AWOS-3PT 126.525	MEMPHIS CENTER 120.075 289.4	UNICOM 122.8 (CTAF) 0
----------------------------	--	---------------------------------



ELEV 279	TDZE 275						
		900 ↑ 1700 ↙ TNZ NDB ↘ 3000 ↘ 1700 ↘ 4.4 NM	CATEGORY	A	B	C	D
REIL Rwy 18 MRL Rwy 4-22, 18-36		Remain within 10 NM	S-18	620-3/4	345 (400-3/4)	620-7/8 345 (400-7/8)	620-1 1/4 345 (400-1 1/4)
FAF to MAP 4.4 NM		360° TCH 45	CIRCLING	760-1	481 (500-1)	800-1 1/2 521 (600-1 1/2)	1000-2 1/4 721 (800-2 1/4)
Knots	60 90 120 150 180						
Min:Sec	4:24 2:56 2:12 1:46 1:28						

SC-1, 16 MAY 2024 to 13 JUN 2024

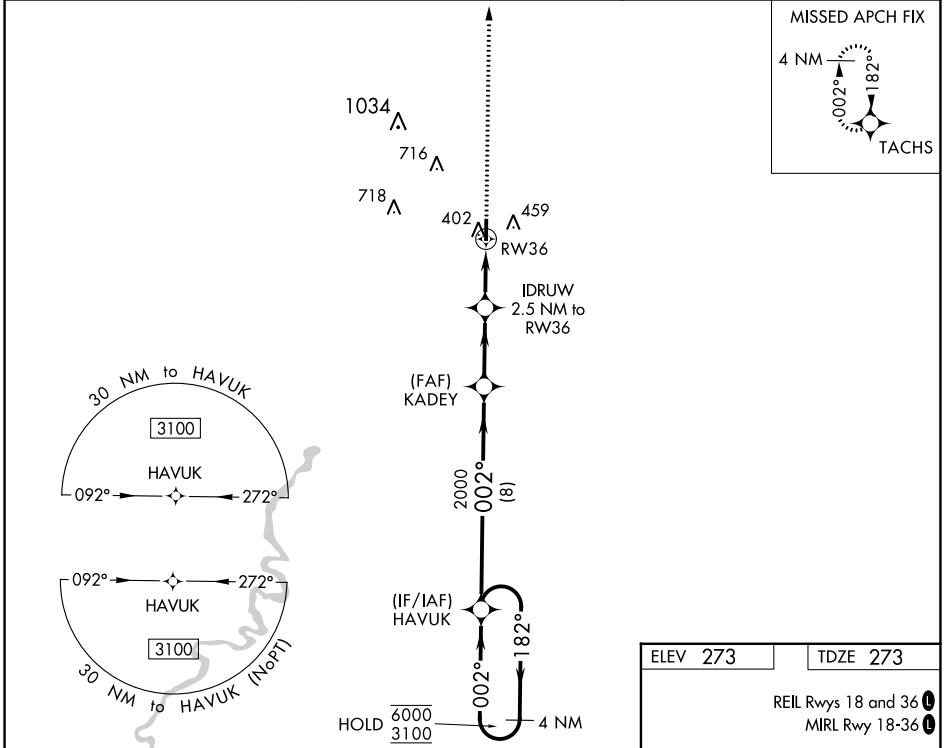
SC-1, 16 MAY 2024 to 13 JUN 2024

WAAS CH 56342 W36A	APP CRS 002°	Rwy Idg 4000 TDZE 273 Apt Elev 273
--	------------------------	---

RNAV (GPS) RWY 36

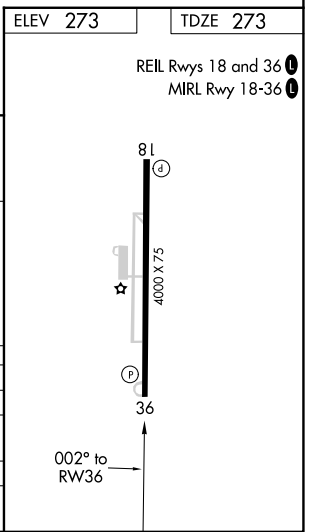
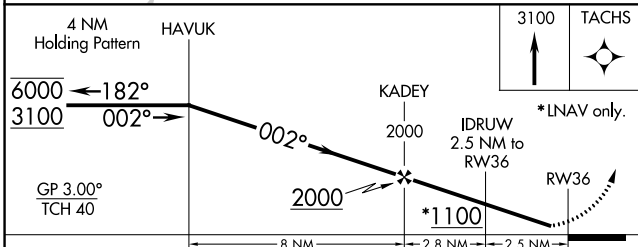
POCAHONTAS MUNI (M7)

RNP APCH. ▼ ▲ Rwy 36 helicopter visibility reduction below ¼ SM NA. Baro-VNAV NA. Use Walnut Ridge altimeter setting.		MISSED APPROACH: Climb to 3100 direct TACHS and hold.
ARG AWOS-3PT 126.525	MEMPHIS CENTER 120.075 289.4	UNICOM 122.8 (CTAF)



SC-1, 16 MAY 2024 to 13 JUN 2024

SC-1, 16 MAY 2024 to 13 JUN 2024



CATEGORY	A	B	C	D
LPV DA	541-1 268 (300-1)			
LNAV/VNAV DA	583-1 310 (400-1)			
LNAV MDA	680-1 407 (500-1)		680-1½ 407 (600-1½)	
☑ CIRCLING	900-1 627 (700-1)		1100-2½ 827 (900-2½) / 1100-2¾ 827 (900-2¾)	

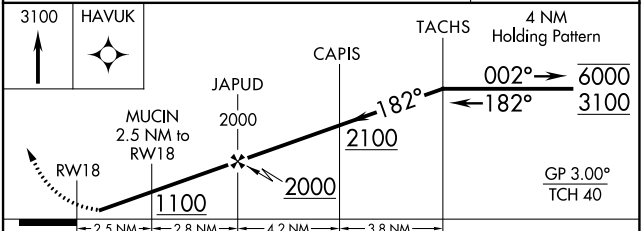
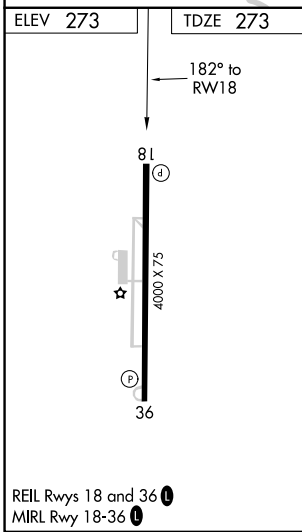
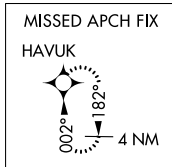
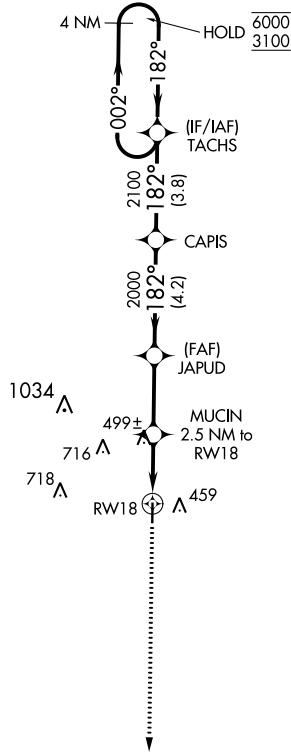
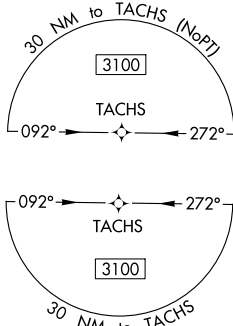
WAAS CH 45543 W18A	APP CRS 182°	Rwy Idg TDZE 273 Apt Elev 273
--	------------------------	---

RNAV (GPS) RWY 18

POCAHONTAS MUNI (M7 \emptyset)

RNP APCH.	Rwy 18 helicopter visibility reduction below $\frac{3}{4}$ SM NA. Baro-VNAV NA. Use Walnut Ridge altimeter setting.	MISSED APPROACH: Climb to 3100 direct HAVUK and hold.
-----------	--	---

ARG AWOS-3PT 126.525	MEMPHIS CENTER 120.075 289.4	UNICOM 122.8 (CTAF) \emptyset
--------------------------------	--	--



CATEGORY	A	B	C	D
LPV DA	571-1 298 (300-1)			
RNAV/VNAV DA	733-1 $\frac{3}{8}$ 460 (500-1 $\frac{3}{8}$)			
RNAV MDA	780-1 507 (600-1)		780-1 $\frac{3}{8}$ 507 (600-1 $\frac{3}{8}$)	
<input checked="" type="checkbox"/> CIRCLING	900-1 627 (700-1)		1100-2 $\frac{1}{2}$ 827 (900-2 $\frac{1}{2}$)	1100-2 $\frac{3}{4}$ 827 (900-2 $\frac{3}{4}$)

SC-1, 16 MAY 2024 to 13 JUN 2024

SC-1, 16 MAY 2024 to 13 JUN 2024