



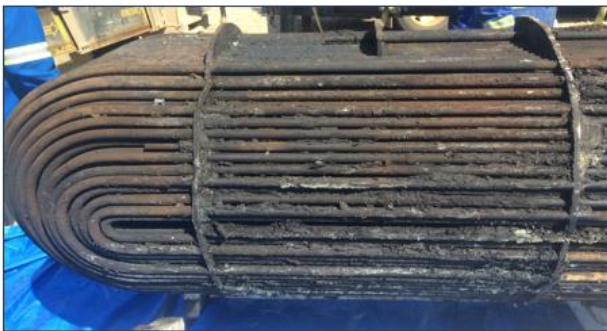
Experts in Fouling & Scaling

Testing | Troubleshooting | Solutions

Fouling and scaling is the accumulation of unwanted materials in process equipment. This is a major cause of loss in production, negative impacts on revenue, and safety for many processing facilities. The impact on equipment downtimes, repairs and cleaning can often be significant. At Nexo Solutions we specialize in fouling testing, troubleshooting and mitigation solutions.

Some of the most common process unit components that can experience fouling are:

- Towers internals (trays or packing)
- Heat Exchangers
- Pipelines
- Level Controls
- Reboilers
- Heaters and Coolers
- Membranes
- Instruments
- Adsorbent Beds
- Coalescers and Filters
- Compressors
- Mesh Pads and Vane Packs
- Separators and KO Drums
- Scrubbers and Slug Catchers



Contact Nexo Solutions today for discussing current fouling or scaling challenges at your facility.