



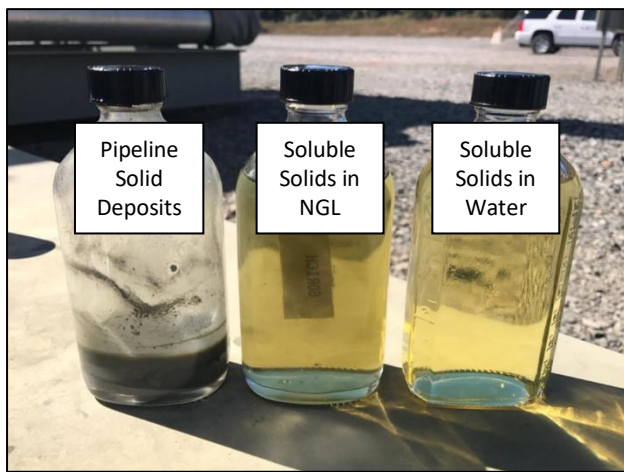
Plant Inlet and Process Solids Control Chemicals

Facility Inlets | Separators | Process Equipment | NGLs

Gas and liquids processing facilities in general and upstream pipelines are constantly exposed to corrosive and fouling environments. Thus, managing corrosion and solids fouling to low levels is essential for maintaining performance and minimizing costs. Solids such as calcium scale, iron sulfide-oxide components in addition to other solids are common by-products of H₂S and CO₂ corrosion, erosion and oxidation. These solid contaminants often cause equipment failures along with surface fouling and under deposit corrosion. This is why eliminating these solids from the inlet and inside process units is paramount for all gas and liquid processing facilities.



The Nexo Solutions solids control chemicals (NX-191E, NX-191L and NX191N), including the total programs and solutions are designed for unloading the facility inlet and the process from solids that directly impact separation vessels, cause equipment plugging, affect filter replacement frequency and costs, and instrument fouling. Each program is tailored for the specific facility for best cost/performance. The program starts with an onsite evaluation at various locations with solid contaminant and fouling challenges, thermal imaging analysis, product efficacy screening, application ratios and performance monitoring for continuous improvement.



For more information on our scale and solids control technologies, contact us at www.NexoSolutions.com