

GEOLOGICAL AND GEOCHEMICAL REPORT
ON
WIDOW CLAIM GROUP
COWICHAN LAKE AREA
VICTORIA MINING DIVISION, B.C.
92C/16E
[48°55'N, 124°11'E]

For
DRC RESOURCES CORPORATION

By
Grant Crooker, B.Sc.
Geologist

OCTOBER, 1981

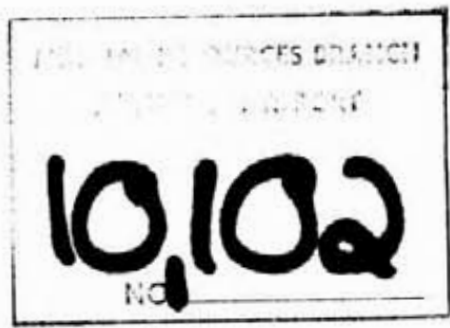


TABLE OF CONTENTS

	<u>Page</u>
SUMMARY AND RECOMMENDATIONS.....	(front)
INTRODUCTION.....	1
General.....	1
Location and Access.....	1
Physiography.....	1
Property and Claim Status.....	1
History.....	2
EXPLORATION PROCEDURE.....	2
GEOLOGY.....	3
Regional Geology.....	3
Claim Geology.....	3
GEOCHEMICAL SAMPLING.....	4
CONCLUSIONS AND RECOMMENDATIONS.....	5
REFERENCES.....	7
CERTIFICATE OF QUALIFICATIONS.....	8
APPENDIX	
Certificate of Analysis	

ILLUSTRATIONS

Figure

- 1 Location Map(Frontispiece)
- 2 Detailed Geology(In Pocket)
- 3 Soil Geochemistry,
Cu/Ag,(In Pocket)
- 4 Soil Geochemistry,
Mo/W,(In Pocket)
5. Claim Geology.....(In Pocket)

SUMMARY AND RECOMMENDATIONS

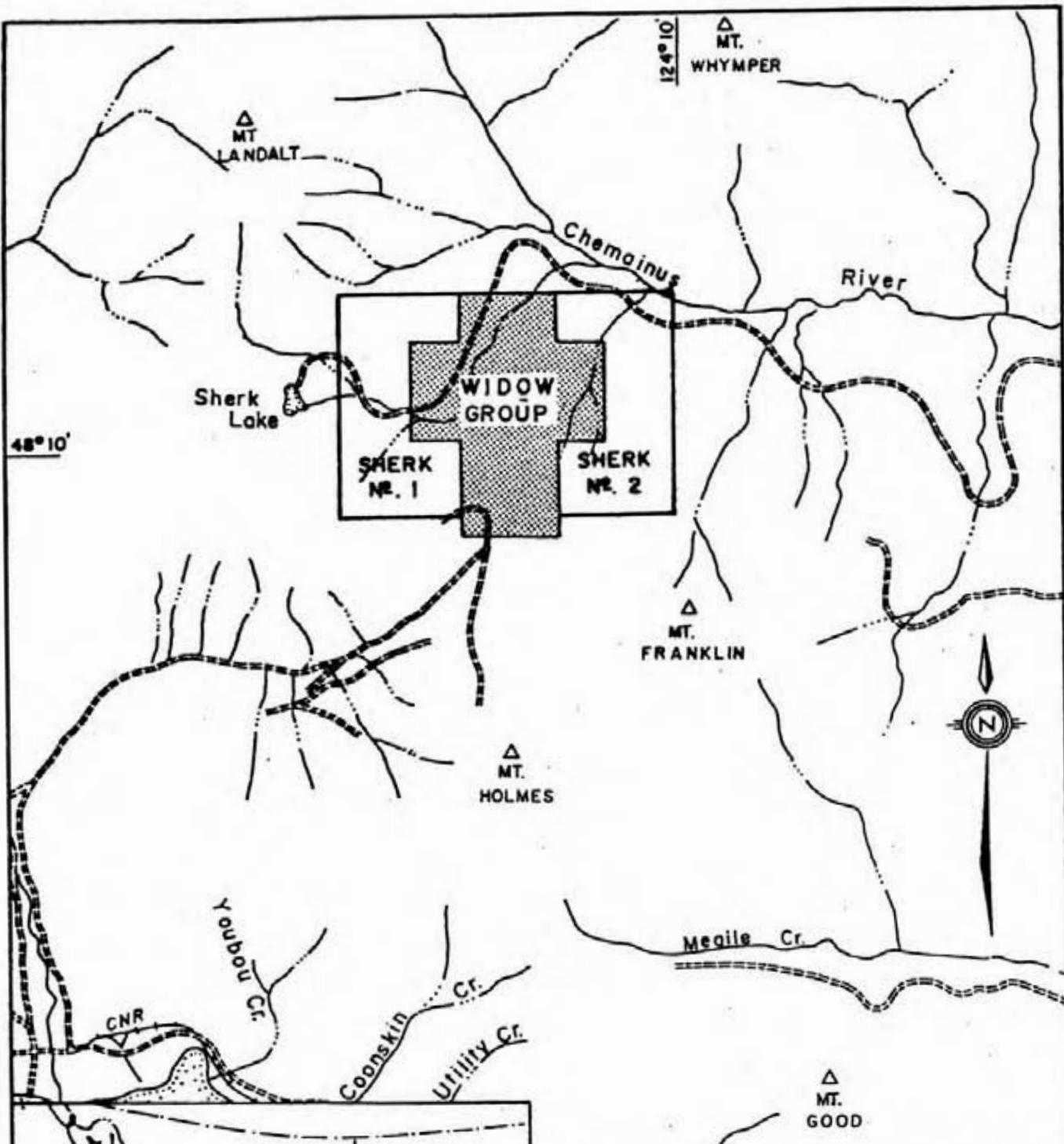
The Widow Claim Group consists of 16 units and 14 two-post claims, located in the Victoria Mining Division.

The property is 6 kilometers north of Youbou, Vancouver Island, and is owned by DRC Resources Corporation, #1250,800 West Pender Street, Vancouver, B.C.

The 1980 program indicated significant skarn mineralization containing chalcopyrite, pyrrhotite, magnetite, scheelite, pyrite and molybdenite. A number of adits and trenches trace the mineralization.

This years program was a continuation of the 1980 program and extended into an area covered by snow during the 1980 program. No additional mineralization was found during this years program.

Recommendations are to continue the exploration on the areas of significant mineralization as recommended by Stanely B. Reamsbottom, Summary Report on the Widow Claim Group.



DRC RESOURCES CORPORATION VANCOUVER, B.C.	
LOCATION MAP WIDOW CLAIMS SCALE 1" = 1 MILE 	
DRAWN BY: G. CROOKER	N.T.S.: 92C/16 E
DATE: SEPT. 1981	FIGURE No. 1

INTRODUCTION

General

During October, 1981 the writer continued the exploration program on the Widow Claim Group initiated in 1980. The 1981 program concentrated on the southeast corner of the claim group which was covered by snow during the 1980 program.

The work consisted of establishing a grid, geochemical soil sampling, prospecting and geological mapping.

Location and Access

The Widow Claim Group (Figure 1) is located on the north slope of Mount Franklin at the headwaters of the Chemainus River, about 7 kilometers north of Youbou, Vancouver Island (lat. $48^{\circ}55'N$, long. $124^{\circ}11'E$).

Access is by 50 kilometers of all-weather logging road from Chemainus along the Chemainus River or alternatively from Youbou a distance of 10 kilometers.

Physiography

The claims are located in the southern part of the Vancouver Island mountains, at elevations of 600 to 1,150 meters above sea level. Topography is moderate to steep with a number of creeks draining the area.

The majority of the area has been logged, leaving slash, underbrush and second growth timber. Most of the area has been replanted.

Property and Claim Status

The Widow Claim Group consists of 16 units and 14 two-post claims, owned by DRC Resources Corporation,

Suite #1250, 800 West Pender Street, Vancouver, B.C.

<u>Claim</u>	<u>Record No.</u>	<u>Expiry Date</u>
Widow 1,2,	228,229	June 6, 1983
Widow 3-8,	230-235	June 6, 1987
Widow 9,10,	284,285	Oct. 2, 1983
Widow 11-14	286-289	Oct. 2, 1987
Sherk #1	373	May 28, 1983
Sherk #2	374	May 28, 1982

History

History of the property has been discussed in the Summary Report on the Widow Claim Group, by Stanley B. Reamsbottom, March 1980.

EXPLORATION PROCEDURE

The 1981 program extended into an area covered by snow during the 1980 program. Work consisted of establishing a grid, geochemical soil sampling, geological mapping and prospecting.

The grid established during the 1980 program was extended 400 meters to the south, with cross lines established at 100 meter intervals and stations at 30 meter intervals along the lines. Length of the crosslines vary from 300 to 540 meters on each side of the baseline.

Geological mapping and prospecting were carried out over the southern part of the claims, as well as over the grid. The data was plotted at a scale of 1:1250.

Geochemical soil sampling (51 samples) was carried out over the grid area, with samples being taken at 60 meter intervals. The samples were generally taken at a depth of 10 centimeters in the "B" horizon. The samples were placed in brown paper sample bags, dried and sent

for geochemical analysis for silver, copper, molybdenum and tungsten. Results were plotted at a scale of 1:1,250.

The samples were sent to Rossbacher Laboratory Ltd., Burnaby, B.C. for analysis. Laboratory techniques for geochemical analysis consists of preparing samples by drying at 75°C. and sieving to minus to 80 mesh. Copper, silver, molybdenum are analyzed by nitric, perchloric digestion. Concentrations of elements are determined by atomic absorption, with a background correction for silver. Tungsten concentrations are determined by the Fusion-spectrophotometric method.

GEOLOGY

Regional Geology

The Widow Claim Group is underlain by the middle greywacke-agillite formation of the Sicker Group. Fossils indicate a middle Pennsylvanian age.

A stock of quartz diorite of the Island Intrusives intrudes the Sicker Group on the west side of the claims.

Karmutsen Volcanics overlies the Sicker to the north of the claims.

Claim Geology

The Widow Claim Group is underlain by a series of bedded cherts, cherty tuffs, agglomerates and andesites (Figure 2). The sediments have a northwest strike and dips to the east and west occur.

A dark green diorite gabbro sill intrudes the sediments. The margins of the sill are fine grained, but the central parts are much coarser grained, with hornblende

and feldspar crystals.

Rock Types

1. Chert, cherty tuffs - This unit is generally a green to grey, fine grained chert or cherty tuff.
2. Diorite-Gabbro - This rock varies from a fine grained dark green gabbro to a medium grained diorite with prominent hornblende and feldspar crystals. Occasionally porphyritic phases are present in the fine grained member.
3. Skarn - The skarn is an aggregate of brown garnet, actinolite and quartz replacing cherty tuffs.

The 1980 program showed significant skarn related mineralization occurs on the property.

The 1981 program indicated the cherty unit which contains the mineralization extends to the south east corner of the claims, but no additional mineralization was located.

GEOCHEMICAL SAMPLING

Soil geochemical samples were analyzed for copper, molybdenum, silver and tungsten (Figures 3&4).

The silver and tungsten values were all very low, and none of the values considered significant.

Values of 10 ppm molybdenum and greater were taken to be anomalous. Only 2 values on Line 50 South + 18 East and Line 50 South + 24 East were anomalous. These values probably indicate an extension of the skarn zone.

Values of 300 ppm copper and greater were taken to be anomalous. Only a few values were anomalous. The values on Line 50 South at 36 East and 39 East probably indicate an extension of the skarn zone. The anomalous values along Line 50 South to the west are probably related to some disseminated chalcopyrite found within the gabbro.

CONCLUSIONS AND RECOMMENDATIONS

The 1980 program indicated significant copper and molybdenum mineralization occurs on the Widow Claims.

The program covered by this report indicated the cherty unit which contains the mineralization extends to the southwest section of the claims. However no additional mineralization was located.

Phase I of the recommendations by Stanley B. Reamsbottom, Summary Report on the Widow Claim Group should be continued. The recommendations are:

1. Road cuts in areas of mineralization should be trenched to give better exposures of mineralization.
2. Test pits should be blasted in areas of old trenches to allow better sampling of mineralization and in the area of high rock geochemical results.
3. Mapping and prospecting be continued over other areas of the property to attempt to locate additional mineralization.

If the results of the continued Phase I program are favourable, then the Phase II recommendation should be carried out.

REFERENCES

B.C. Department of Mines Bulletin #37, "Comego"

Crooker, Grant., B.Sc. - Geological and Geochemical Report on The Widow Claim Group, Cowichan Lake Area, June 1980.

Malcolm, D.C., P. Eng., - Comego Group Geological Report, July 1965 (Assessment Report #641).

Montgomery, J.H., Ph.D., P.Eng., - Geochemical Report on work done Anne 1-12 Mineral Claims, August, 1969, (Assessment Report #1949).

Montgomery, J.H., Ph.D., P.Eng., - Geochemical Report on work done on Anne 23-32, 35-40, Mineral Claims November, 1969, (Assessment Report #2167).

Montgomery, J.H. Ph.D., P.Eng., and Cochrane, P.Eng., - Geological and Geophysical Report on Anne Group of Mineral Claims, October 7, 1970, (Assessment Report # 2849).

Muller J.E. - Geology of Vancouver Island, 1977.

Reamsbottom, Stanley B., Ph.D., P.Eng., - Summary Report on the Widow Claim Group, March 1980.

Report of Minister of Mines, - 1906, 1907, 1919, 1948, "Cascade", "Comego".

Respectfully submitted,

Grant Crooker

Grant Crooker, B.Sc.
Geologist

October, 1981

CERTIFICATE OF QUALIFICATIONS

I, Grant F. Crooker, B.Sc., Geology, of Box 234, Keremeos, British Columbia, state as follows:

1. That I graduated from the University of British Columbia in 1972 with a Bachelor of Science degree in Geology.
2. That I have prospected and actively pursued geology prior to my graduation and have practiced my profession since 1972.
3. That I am a member of the Canadian Institute of Mining and Metallurgy.
4. That I am a Fellow of the Geological Association of Canada.
5. That I am the owner of 13,666 shares of DRC Resources Corporation.

DATED at Vancouver, British Columbia this 30th day of October, 1981.

Grant Crooker
Grant Crooker B.Sc.
Geologist

Rossbacher Laboratory Ltd.

GEOCHEMICAL ANALYSTS & ASSAYERS

BURNABY, B. C.
CANADA
TELEPHONE: 299-6910

CERTIFICATE OF ANALYSIS

TO: DRC RESOURCES LTD
1250 800 West Pender Street
Vancouver, B.C.

CERTIFICATE NO. 81342-1
INVOICE NO. 1440
DATE ANALYSED SEPT. 28/81
PROJECT WIDOW PROP.

No.	Sample	pH	Mo	Cu	Ag	W					No.
01	50S+60E		1	316	0.6	2					01
02	120E		1	222	1.4	1					02
03	180E		1	272	0.4	5					03
04	240E		14	188	0.4	10					04
05	270E		2	18	0.4	2					05
06	300E		16	1040	1.6	1					06
07	360E		1	220	1.0	2					07
08	450E		1	970	1.2	2					08
09	480E		2	660	1.0	5					09
10	540E		8	106	0.6	1					10
11	60S+120E		4	240	0.8	1					11
12	180E		1	40	0.8	2					12
13	210E		2	88	1.0	1					13
14	270E		3	102	0.6	2					14
15	330E		2	140	0.8	2					15
16	420E		1	136	0.6	2					16
17	70S+60E		1	50	0.6	1					17
18	120E		1	30	0.4	1					18
19	180E		4	178	0.2	1					19
20	240E		5	96	0.4	1					20
21	300E		1	8	0.4	1					21
22	80S+60E		1	38	0.6	1					22
23	120E		1	18	0.4	1					23
24	180E		1	16	0.4	1					24
25	240E		1	34	0.2	1					25
26	300E		2	6	0.4	1					26
27	50S+60W		5	530	0.4	2					27
28	120W		4	366	0.4	2					28
29	180W		1	142	0.2	2					29
30	300W		1	20	0.4	2					30
31	60S+60W		1	16	0.6	2					31
32	120W		2	158	0.4	2					32
33	180W		2	78	0.4	2					33
34	240W		1	58	0.2	2					34
35	70S+120W		1	100	0.4	1					35
36	180W		2	76	0.2	5					36
37	240W		2	208	0.6	1					37
38	300W(A)		2	180	0.8	2					38
39	300W(B)		1	22	0.4	5					39
40											40

VALUES IN PPM, UNLESS NOTED OTHERWISE.

Certified by

P. Rossbach

Rossbacher Laboratory Ltd.

GEOCHEMICAL ANALYSTS & ASSAYERS

2425 W. 57th Street
 BURNABY, B. C.
 CANADA
 TELEPHONE: 299-6910

DRC RESOURCES LTD. CERTIFICATE OF ANALYSIS

TO: 1250 800 West Pender Street
 Vancouver, B.C.

CERTIFICATE NO. 81342-2
 INVOICE NO. 1440
 DATE ANALYSED SEPT. 28/81
 PROJECT WIDOW PROP.

No.	Sample	pH	Mo	Cu	Ag	W					No.
01	805+60W		1	16	0.6	1					01
02	120W		1	56	0.4	1					02
03	180W		1	118	0.8	1					03
04	240W		1	32	0.6	1					04
05	455+BL		2	390	1.0	1					05
06	505+BL		3	188	0.8	1					06
07	605+BL		1	16	0.6	1					07
08	655+BL		1	130	0.2	1					08
09	705+BL		1	124	0.4	1					09
10	755+BL		1	160	0.4	1					10
11	805+BL		1	50	0.4	1					11
12											12
13	805+3005		1	112	1.0	1					13
14											14
15											15
16											16
17											17
18											18
19											19
20											20
21											21
22											22
23											23
24											24
25											25
26											26
27											27
28											28
29											29
30											30
31											31
32											32
33											33
34											34
35											35
36											36
37											37
38											38
39											39
40											40

VALUES IN PPM, UNLESS NOTED OTHERWISE.

Certified by

P. Rossbach

COST STATEMENT

WAGES

1 Geologist \$3,600.00
12 days @ 300/day
Sept. 9, 11-17, 28.30
Oct. 1, 1981

1 Geologist 1,800.00
6 days @ \$300/day
Oct. 3-8, , 1981

ACCOMMODATION

7 Days 350.00

MEALS

7 Days 350.00

TRANSPORTATION

Vehicle Rental (7days) 280.00
Gasoline 114.21

FIELD SUPPLIES

35.62

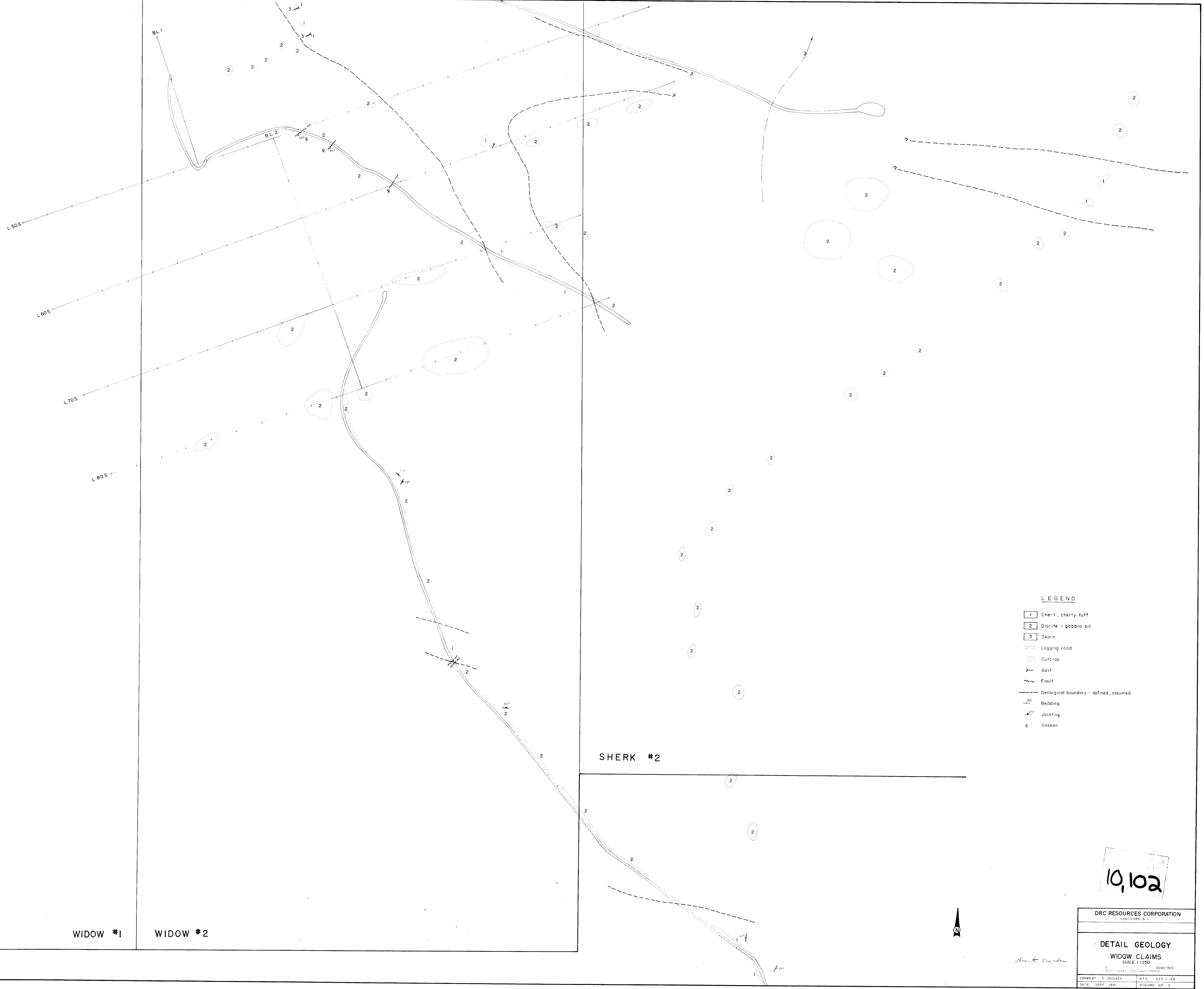
GEOLOGICAL REPORT

Secretarial, Draughting,
Reproduction, etc. 1,200.00

ANALYSIS

51 Samples, Cu, Mo, Ag, W,
5.75/sample 293.25

TOTAL \$8,023.08



L505
L605
L705
L805

BL 1

BL 2

SHERK #2

WIDOW #1

WIDOW #2

- LEGEND**
- 1 Chert, cherty tuff
 - 2 Diorite - gabbro sill
 - 3 Skarn
 - Logging road
 - Outcrop
 - Adit
 - ~ Fault
 - Geological boundary - defined, assumed
 - Bedding
 - Jointing
 - g Gossan

10,102

DRC RESOURCES CORPORATION
VANCOUVER, B.C.

DETAIL GEOLOGY
WIDOW CLAIMS
SCALE 1:250
0 50 100 METRES

DRAWN BY: S. CROOKER N.T.S. 92C / 16E
DATE: SEPT 1981 FIGURE NO. 2



LEGEND

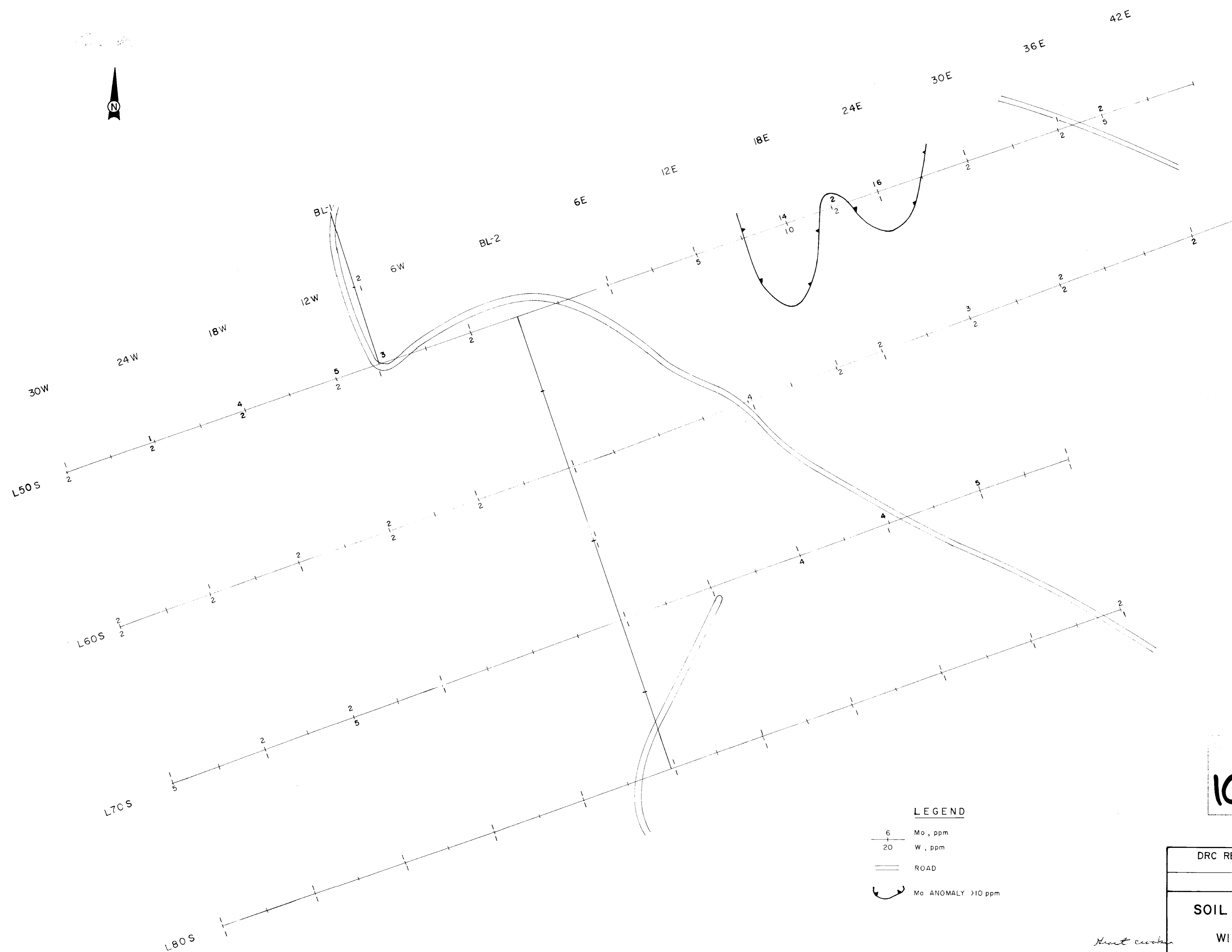
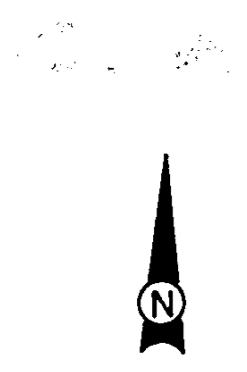
- Cu, ppm
- Ag, ppm
- ROAD
- Cu ANOMALY >300 ppm

10,102

NO.

DRC RESOURCES CORPORATION VANCOUVER, B.C.	
SOIL GEOCHEMISTRY Cu & Ag WIDOW CLAIMS SCALE 1:1250	
DRAWN BY: G. CROOKER	N.T.S.: 92C/16E
DATE: SEPT. 1981	FIGURE NO.: 3

Geoff Crooker



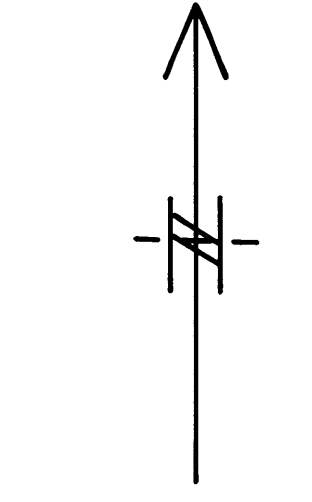
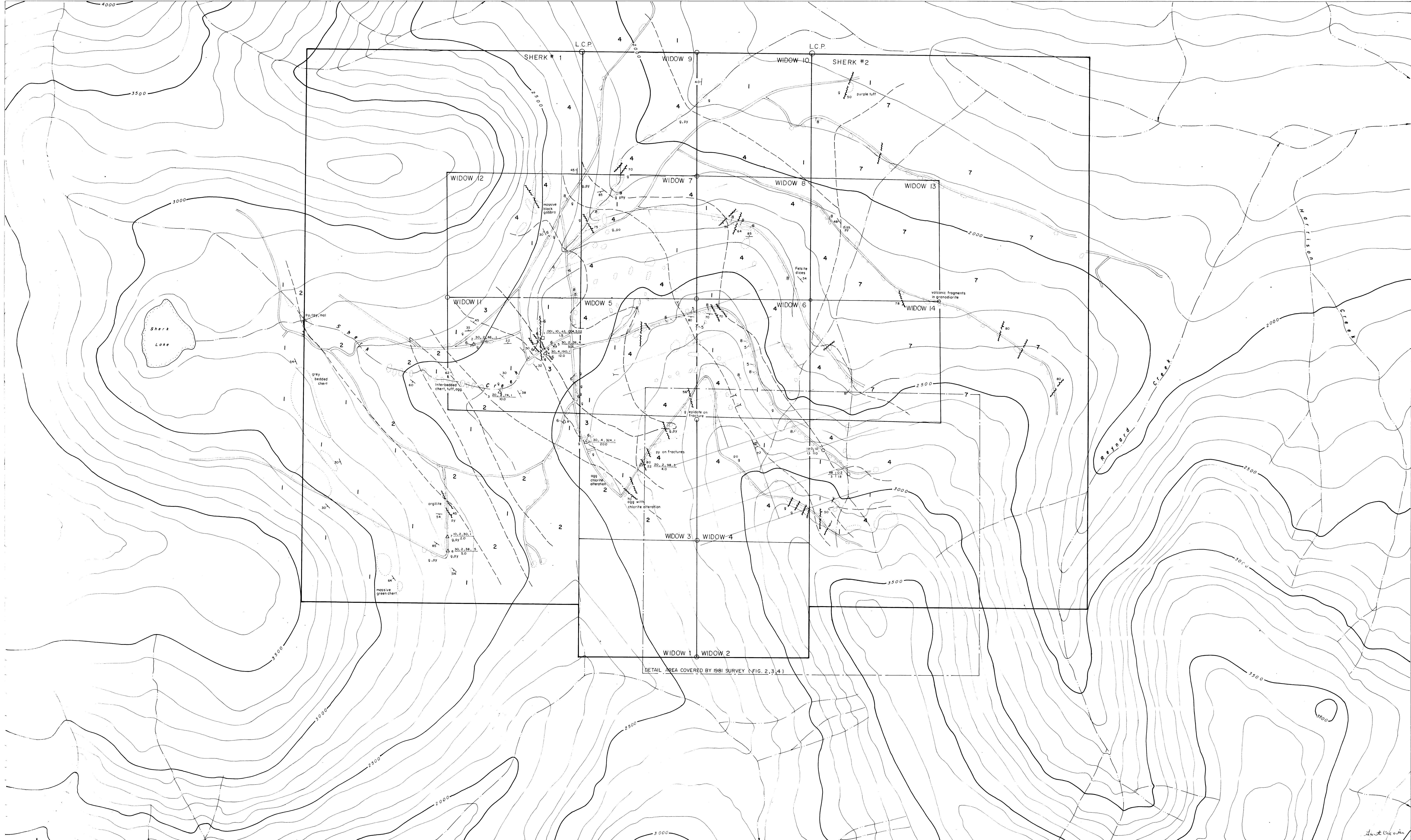
LEGEND

- 6 Mo, ppm
- 20 W, ppm
- ROAD
- Mo ANOMALY >10 ppm

10,102

DRC RESOURCES CORPORATION VANCOUVER, B.C.	
SOIL GEOCHEMISTRY Mo & W WIDOW CLAIMS SCALE 1:1250	
0 60 METRES	
DRAWN BY - G. CROOKER	NTS - 92C / 16E
DATE - SEPT 1981	FIGURE NO. 4

G. Crooker



LEGEND

- 1 CHERT, CHERT TUFF
- 2 AGGLOMERATE
- 3 ANDESITE
- 4 DIORITE - GABBRO SILL
- 5 SKARN
- 6 QUARTZ - CARBONATE VEIN
- 7 GRANDIORITE
- 8 FELDSPAR PORPHYRY DIKE
- LOGGING ROAD
- ADIT
- OUTCROP
- FAULT
- BEDDING
- GEOLOGICAL BOUNDARY
- cp CHALCOPYRITE
- Mo MOLYBDENITE
- py PYRITE
- po PYRRHOTITE
- g GOSSAN
- mal MALACHITE
- agg AGGLOMERATE
- SILT GEOCHEM. SAMPLE Cu | Ag
10120 Mo | W
- △ ROCK GEOCHEM. SAMPLE NO. Au, Pb, Hg, Cu, Mo
21 20, 2, 10, 15 width (m)
- ROCK ASSAY, SAMPLE NO. Au, Ag, Cu, Mo, W, Zn
1 1002, 10, 43, 104, 102 width (m)

CONTOUR INTERVAL 100 FEET

1Q102

DRC RESOURCES CORPORATION
VANCOUVER, B.C.
WESTRIDGE ENTERPRISES LTD.

GEOLOGY
WIDOW CLAIMS
VICTORIA M.D., BRITISH COLUMBIA

DRAWN BY: G. CROOKER N.T.S. 92C/16E
DATE: SEPT. 1981 FIGURE NO. 5

DETAIL AREA COVERED BY ISBI SURVEY (FIG. 2, 3, 4)