



B & K GOLD PROJECT

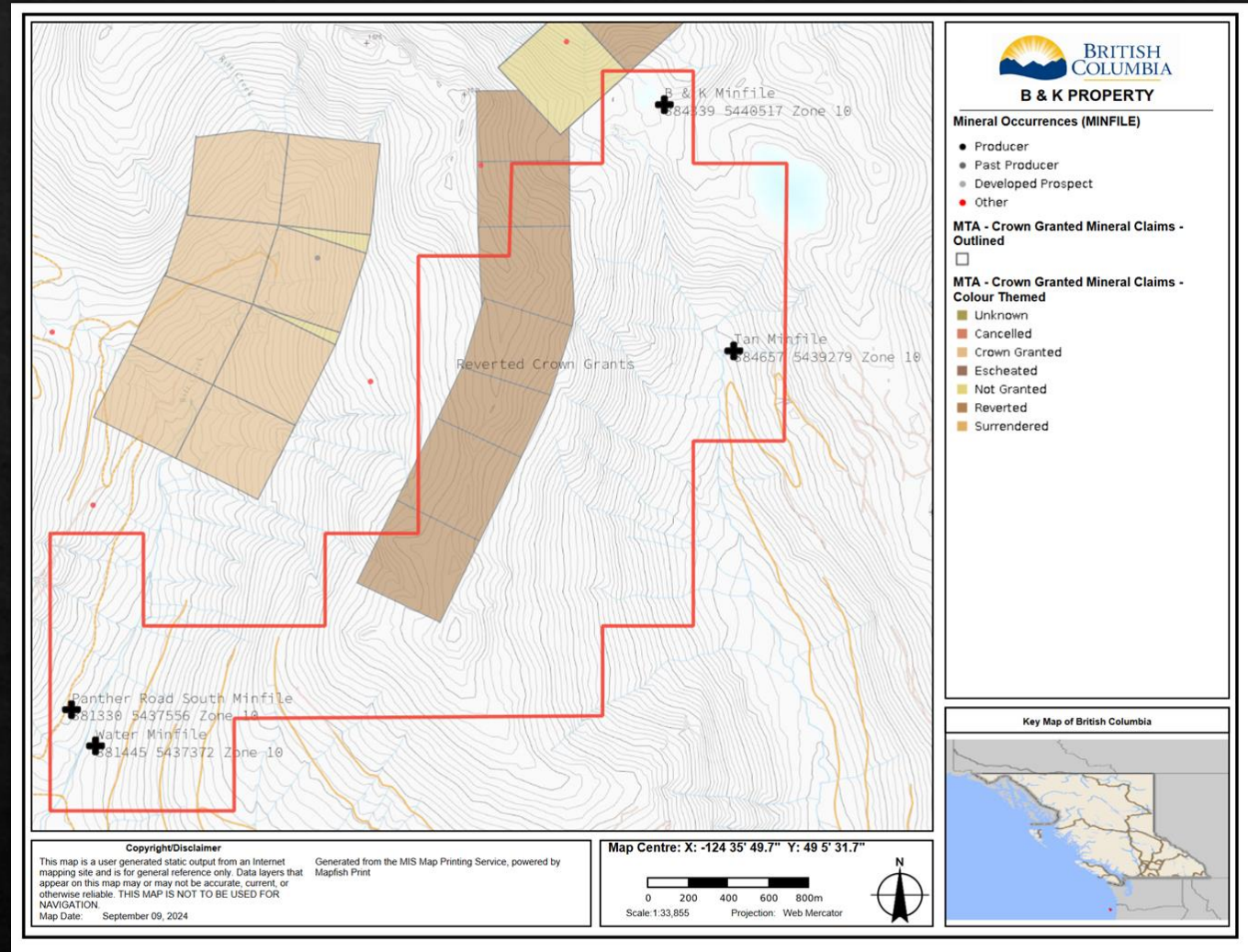
911 EXPLORATION CORP.

September 10th, 2024

Revision #1

PROPERTY AREA

- ❖ Titles - 1098836, 1103854
- ❖ Total claim area of 592.32 hectares located in year-round accessible ground.
- ❖ Property is located at lower elevation and is workable almost year-round. (10 months)
- ❖ Mild Vancouver island climate.
- ❖ Covers four under explored minfile occurrences.
- ❖ Sample grabs historically up to 88g/ton Au.
- ❖ Float sample in 2023 assayed 73.9g/ton Au.
- ❖ 2023 Float sample up to 11.21% copper in XRF.
- ❖ Adjacent to known historical deposits such as Thistle and Black Panther. B&K property contains numerous workings.
- ❖ All crown grants reverted or not granted.



GEOLOGICAL SETTING

- ❖ Near the B&K the area is underlain by volcanic and minor sedimentary rocks of the Devonian Duck Lake Formation (Sicker Group). A major vertical north trending fault cuts the rocks. The general geology is basaltic volcanics from the Sicker Group (Duck Lake Formation) and Island Plutonic Suite.
- ❖ Adjacent to the old Thistle Mine which has VMS/Myra Falls/Mt Sicker style mineralization in limestone/skarns.
- ❖ Area deposits occur in McLaughlin Ridge basalts ("Mine Flow Unit" of the Thistle mine, 092F 083).
- ❖ Widely scattered quartz veins, with sulphides, occur in shear zones within tuffs, cherts, and andesite assaying up to 88g/ton gold.



MINERALIZATION

- ❖ Several widely scattered quartz veins, with pyrite, chalcopyrite, galena, occur in shear zones within tuffs, cherts, and andesite. A sample of one of these veins at the south end of Summit Lake assayed 87.8 grams per tonne gold.
- ❖ To the north of summit lake one hundred meters, quartz stringers with chalcopyrite, pyrite, sphalerite and galena occur. A 1.5 metre sample from a vein in a trench assayed 2.7 grams per tonne gold, 13.7 grams per tonne silver and 0.15 per cent copper
- ❖ At the Water minfile or North Rift showings mineralization consists of pyrite, chalcopyrite, and galena in quartz veins with associated quartz-carbonate and sericite alteration. The associated alteration occurs over a width of more than 100 meters, just to the east, finely laminated black argillite with 10 to 20 per cent disseminated pyrite occurs between sequences of basaltic and cherty tuff. Mineralization is fracture filling and disseminated from 5-25% in cherty tuff, limestone, skarn, basalt, flows and chert. The zone also contains skarn lenses with up to 50% sulphides.
- ❖ At the Panther Road South Minfile a zone of semi-massive pyrite, up to 10 centimeters thick and 50 centimeters long, a sample across the vein assayed 2.1g/ton gold.



POTENTIAL WORK PROGRAM

- ❖ Property has had limited geochemical sampling and prospecting has been limited to less than 7 days in the last 50 years.
- ❖ Property needs geological mapping.
- ❖ Only shallow drilling has been completed in a couple areas on the property. Further defining existing targets is necessary as well as defining new drill targets.
- ❖ Veins at B & K would be perfect for a backpack drill program.
- ❖ Relocate, trenching and sampling all old workings including adits, trenches and open cuts.
- ❖ Property has had no geophysical work to date.



MEET THE ROCKS



Just a few of the sulphide bearing rocks from the property between outcrop and float samples.



CONTACT INFO

www.911mining.com

911 Exploration Corp.

Justin Deveau

(250)-709-0187

911mining@gmail.com