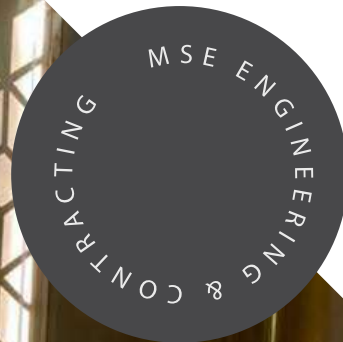


# ***Your Trusted Partner***

we provide innovative and reliable engineering solutions, delivering exceptional quality in every project.



## ABOUT US

**ESTABLISHED IN 2013, MSE METAL FORMING HAS BUILT A SOLID REPUTATION AS A LEADER IN CUSTOM METALWORK, COMBINING FUNCTIONALITY WITH AESTHETIC EXCELLENCE.**

**WITH A TEAM OF HIGHLY SKILLED ARTISANS AND ENGINEERS, WE SPECIALIZE IN CREATING HANDRAILS, LIGHTING SOLUTIONS, AND BESPOKE FURNITURE THAT TRANSFORM SPACES, ADDING BOTH ELEGANCE AND UTILITY.**

**OUR EXPERTISE EXTENDS BEYOND MERE PRODUCTION; WE OFFER COMPREHENSIVE DESIGN AND CONSULTATION SERVICES TO ENSURE EVERY PROJECT ALIGNS PERFECTLY WITH THE CLIENT'S VISION. WHETHER FOR RESIDENTIAL, COMMERCIAL, OR INDUSTRIAL PURPOSES, WE BRING INNOVATION, PRECISION, AND A KEEN ATTENTION TO DETAIL TO EVERY METAL MASTERPIECE WE CREATE.**

**AT MSE, WE TAKE PRIDE IN OUR STATE-OF-THE-ART MANUFACTURING PROCESSES, USING ADVANCED TECHNIQUES LIKE LASER CUTTING, CNC MACHINING, AND PRECISION WELDING TO GUARANTEE TOP-NOTCH QUALITY. OUR COMMITMENT TO SUSTAINABILITY IS REFLECTED IN OUR CAREFUL SELECTION OF MATERIALS AND ECO-FRIENDLY PROCESSES, ENSURING THAT EVERY PIECE IS NOT ONLY DURABLE BUT ALSO ENVIRONMENTALLY RESPONSIBLE.**

**OUR MISSION IS TO SURPASS CLIENT EXPECTATIONS BY DELIVERING PREMIUM METAL SOLUTIONS THAT STAND THE TEST OF TIME, BACKED BY EXCEPTIONAL CUSTOMER SERVICE. FROM INITIAL CONCEPT TO FINAL INSTALLATION, WE WORK CLOSELY WITH OUR CLIENTS, OFFERING TAILORED SOLUTIONS THAT MEET BOTH TECHNICAL SPECIFICATIONS AND AESTHETIC PREFERENCES.**

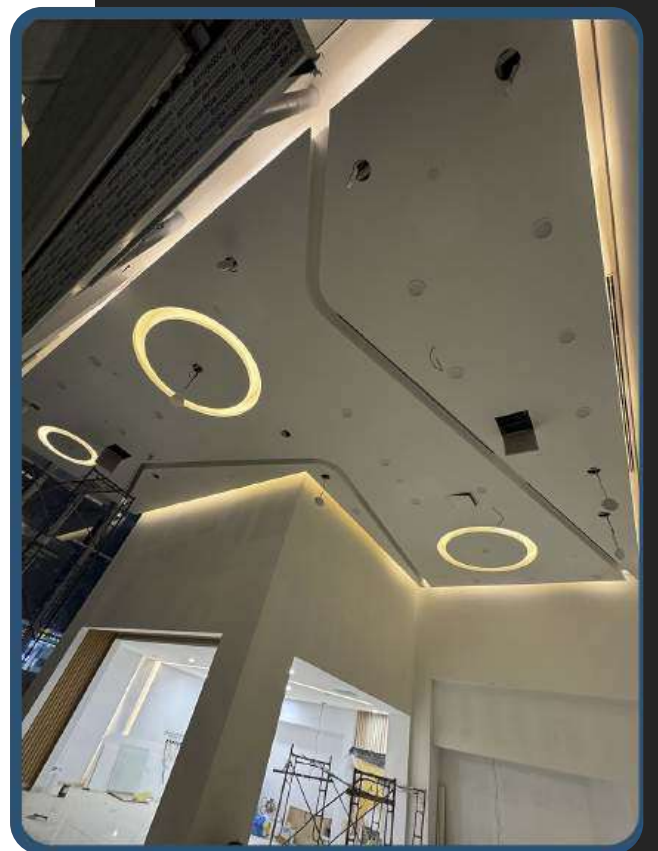
**WE ARE PASSIONATE ABOUT OUR CRAFT, AND EVERY PIECE WE CREATE IS A REFLECTION OF OUR DEDICATION TO PERFECTION AND INNOVATION IN METAL FORMING.**



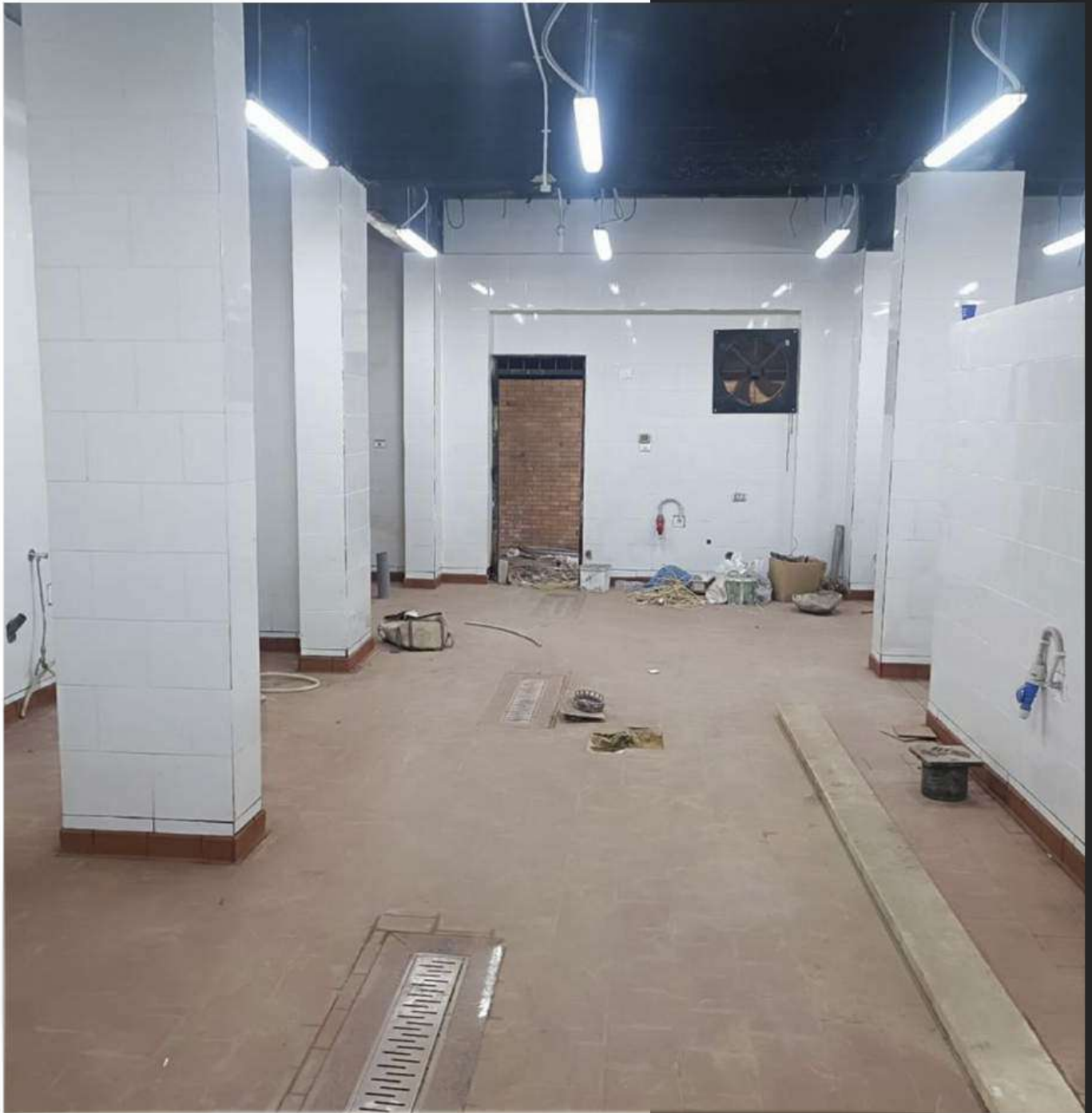


## DALLAH Clinic - Riyadh KSA

This project encompassed the complete fit-out of the Dallah Clinic in Alyarmouk, Riyadh, covering all mechanical, electrical, and plumbing (MEP) works, architectural and civil tasks, as well as finishing touches. The comprehensive approach ensured a fully functional and aesthetically pleasing clinical environment, meeting healthcare standards while enhancing patient and staff experience.

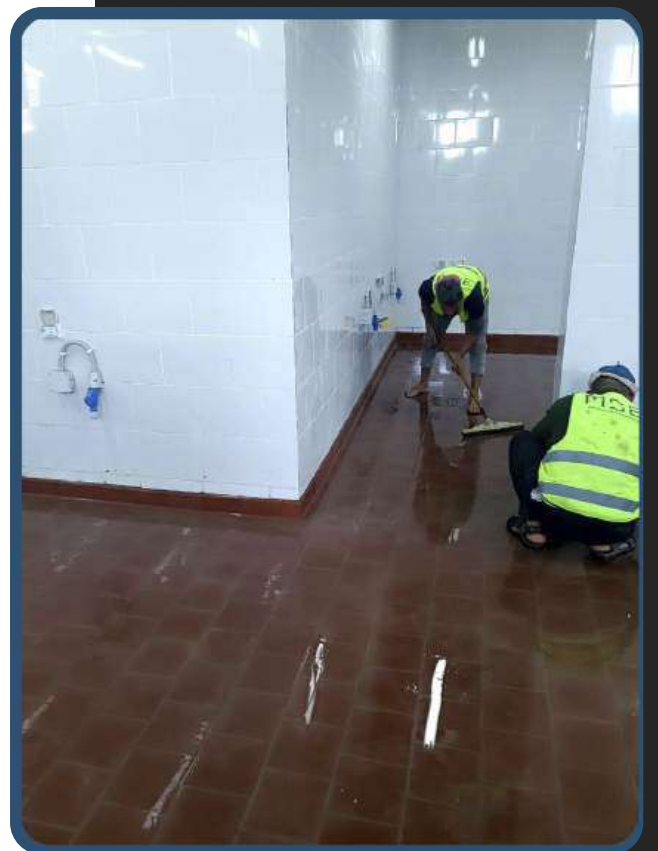






## **DABA Kitchen - Sidi Abd ElRahman**

**The project involved a full renovation of the Daba Kitchen in Sidi Abd El Rahman, including demolition, redesign, and finishing. The scope of work covered every aspect of the kitchen, transforming it into a modern and functional space that meets high-quality standards, with a focus on optimizing layout and aesthetics for a better culinary experience.**







## Abu Ouf - MIVIDA EMMAR MISR

The project involved installing a customized wire mesh ceiling, crafting a functional stair with a rail for safe access, and fabricating storage shelves to optimize display space at the Abu Auf store, enhancing the store's industrial look and practicality.



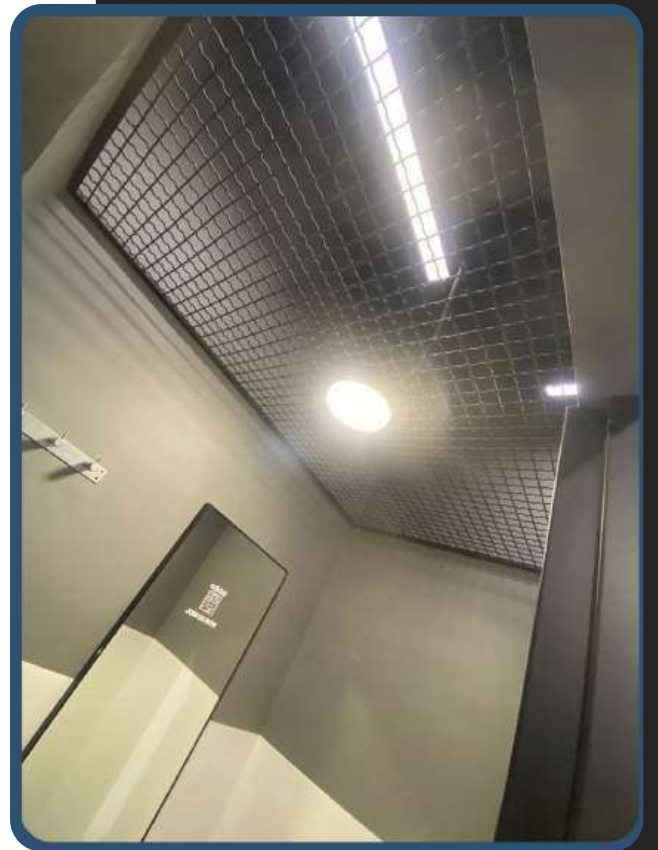
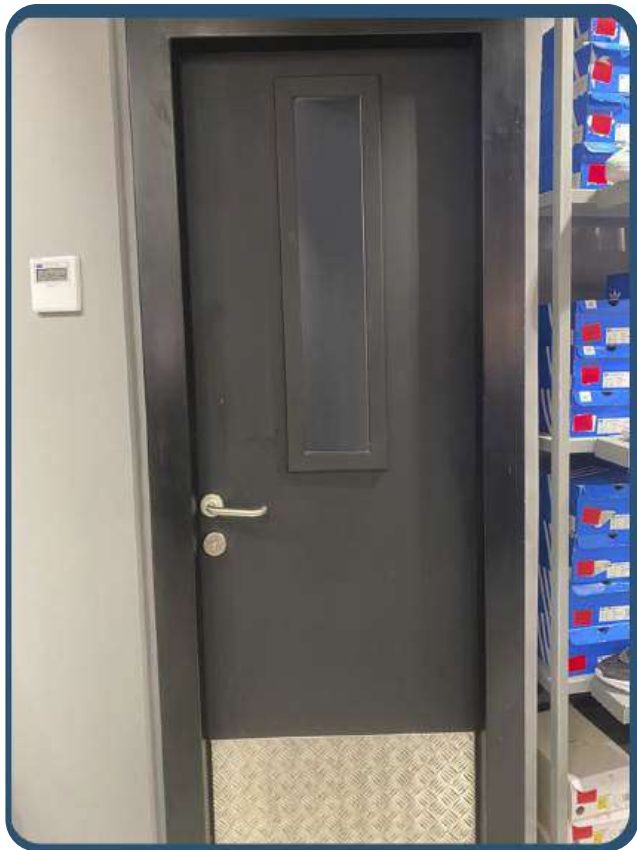






## **ADIDAS - Rehab Mall 2**

The project included the installation of fitting room doors and a wire mesh ceiling at the Adidas store in Mall Rehab 2, Radius. The wire mesh ceiling added a modern industrial touch, while the custom-designed fitting room doors provided functionality and privacy, enhancing the store's aesthetic and customer experience.







## **ADIDAS - Mall of Egypt**

**This project involved the fabrication and installation of metal furniture units for the Adidas store at the Mall of Egypt. The metal furniture was designed to complement the brand's athletic and modern aesthetic, providing durability and functionality while enhancing the shopping experience for customers in a dynamic retail environment.**





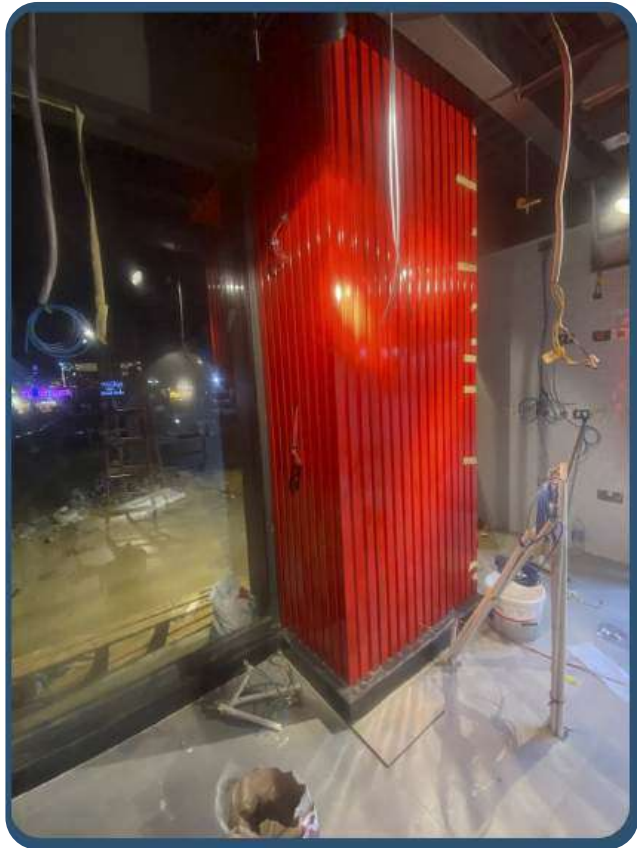




## KFC - Zahraa El Maadi

The project involved the elevation of large mesh screens and the installation of interior cladding using corrugated sheets at the KFC outlet in Zahraa El Maadi Hub 50. The mesh screens provided a modern, industrial look to the exterior, while the corrugated sheet cladding added texture and a contemporary touch to the interior, enhancing the restaurant's overall aesthetic appeal.







## **DeFacto - All Season Park Mall**

The project involved the installation of metal mesh elements at the DeFacto store in All Season Park Mall, enhancing the entrance and counters. The metal mesh design added a modern and stylish industrial look, creating a visually appealing and cohesive aesthetic that aligns with the brand's image while ensuring durability and functionality in high-traffic areas.







## Taboon - Mall of Arabia

The project involved the installation of a metal menu board, wire mesh cladding, stylish light fixtures, and a pergola at the Taboon outlet in Mall of Arabia. The metal menu board provided a sleek and durable solution for displaying offerings, while the wire mesh cladding added an industrial flair. The carefully chosen light fixtures enhanced the ambiance, and the pergola created an inviting outdoor dining area, contributing to an engaging customer experience.



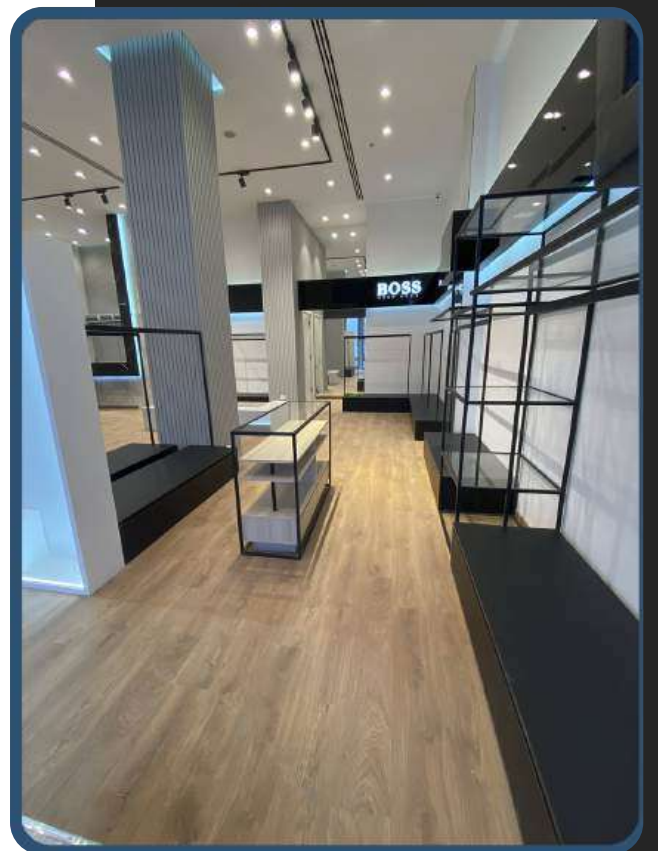
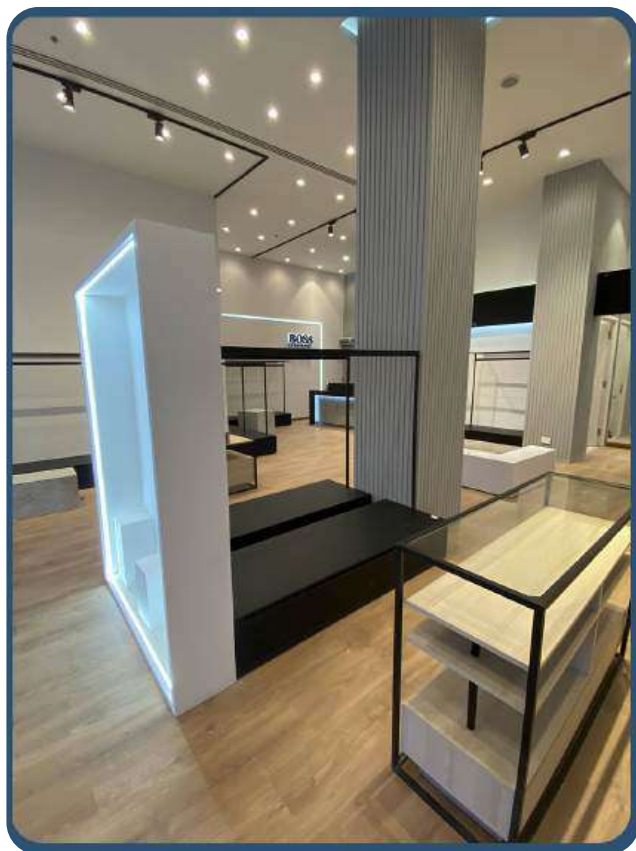




## **BOSS HUGO - Marina Marassi**

The project involved the fabrication and installation of metal furniture for the Hugo Boss store at Marine Marassi. The metal furniture was designed to reflect the brand's sophisticated aesthetic, providing both durability and style, while enhancing the overall shopping experience in the store.



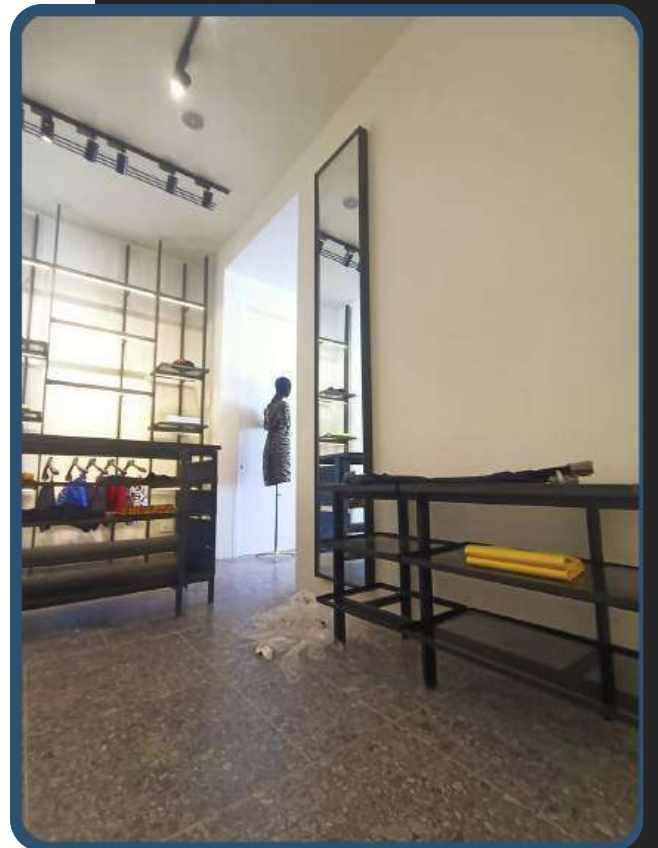




## **DSQUARED2 - Marina Marassi**

The project involved the design and installation of metal furniture for the Desquared 2 store at Marine Marassi. The metal furniture showcased a contemporary and stylish aesthetic, aligning with the brand's identity while ensuring durability and functionality, ultimately enhancing the overall ambiance of the retail space.







## LA7 - Garden 8 Mall

This project included cladding installations using corrugated sheets, creating a textured and modern look for the LA7 store at Garden 8 Mall. Additionally, a custom metal background was designed for the reception area, enhancing its visual appeal, while wire mesh installations in the toilets provided a stylish industrial touch, maintaining functionality and aesthetic consistency throughout the space.







## Car Craft - Nasr City

This project involved the design and installation of decorative metal wire mesh and custom furniture units for the Car Craft location in Naser City. The decorative wire mesh added an artistic touch to the space, enhancing its modern aesthetic, while the bespoke furniture units provided functionality and comfort, creating an inviting environment for customers.







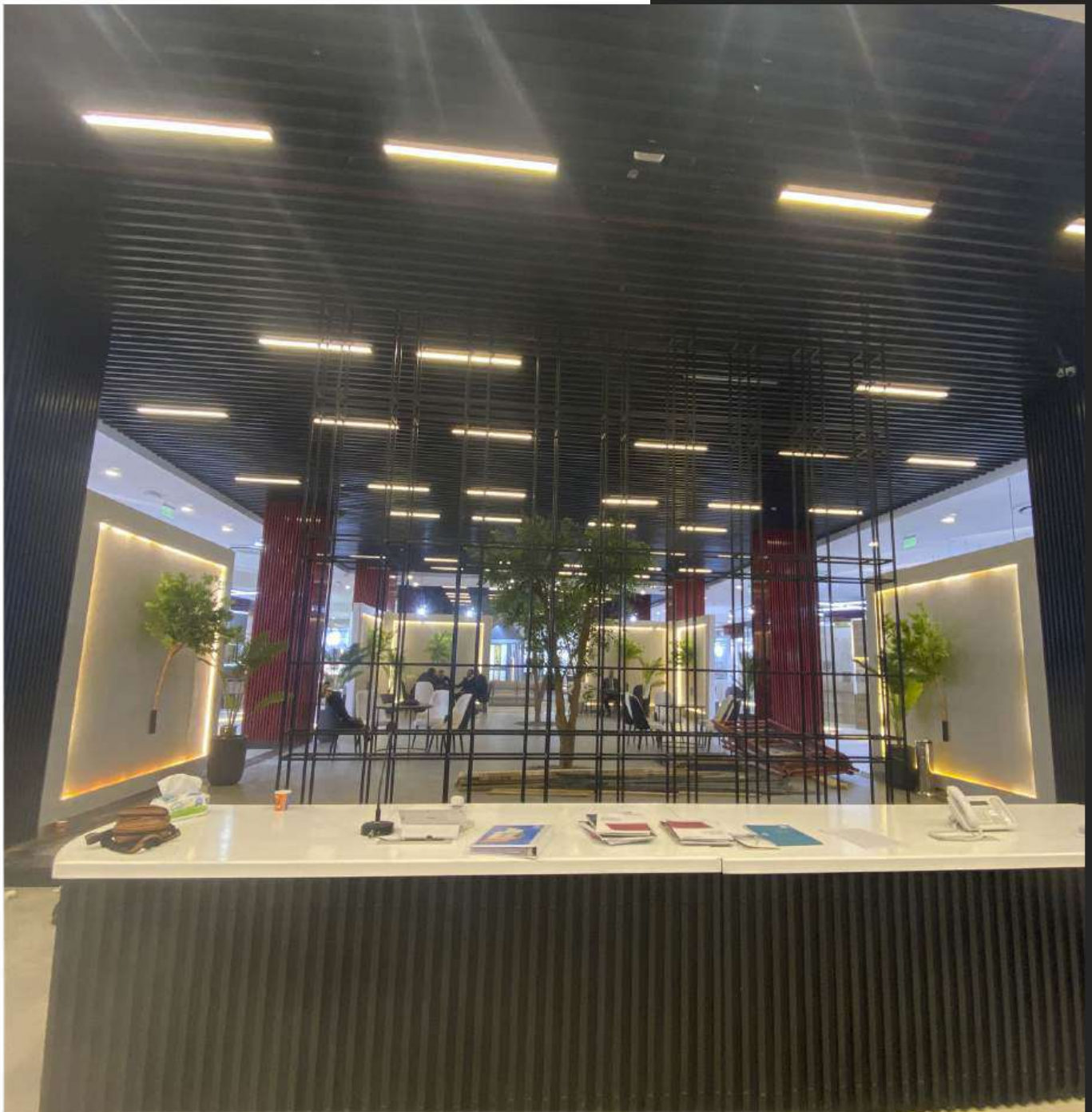


## HDP HDRIC - SIGMA

The project included the fabrication and installation of metal furniture and signage for the HDP HDRIC site at Fifth Generation. The metal furniture provided durable and stylish solutions, while the custom signage enhanced visibility and brand presence, contributing to a cohesive and professional environment.



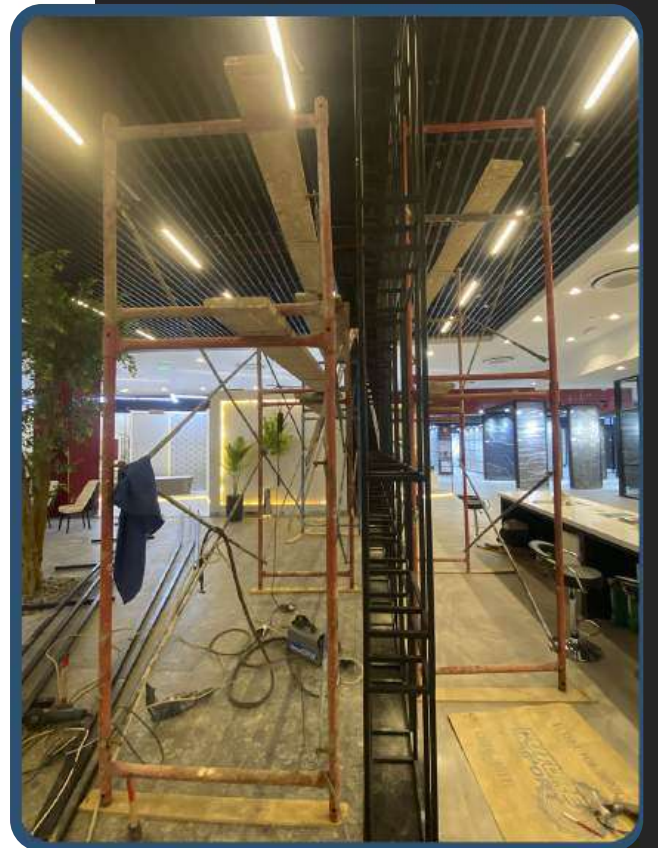
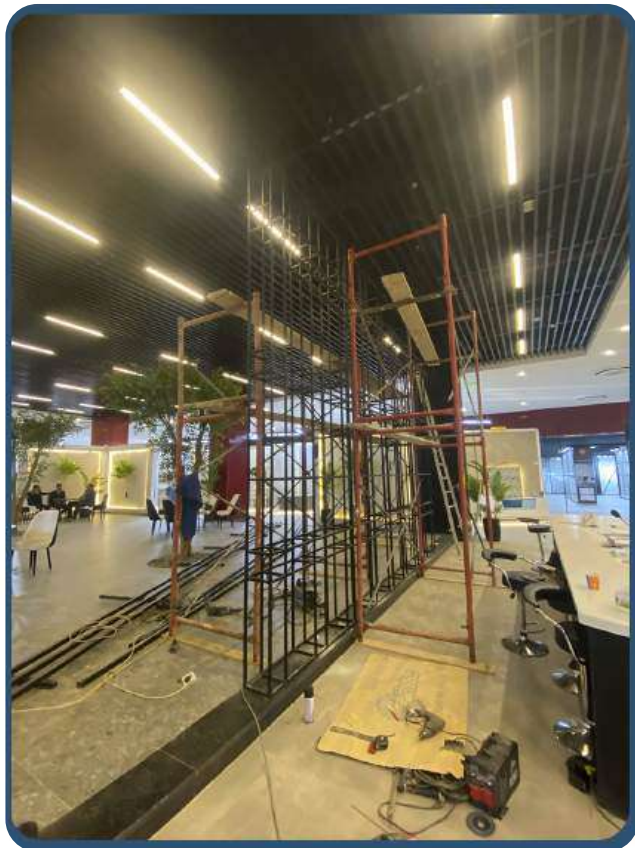




## **ELSALAB - Madinty**

The project involved the installation of a large metal patron in the main hall of the ELSALAB facility in Madinty. This impressive metal structure served as a striking architectural feature, enhancing the visual appeal of the space while providing functional support and defining the atmosphere of the main hall, creating an inviting and modern environment.





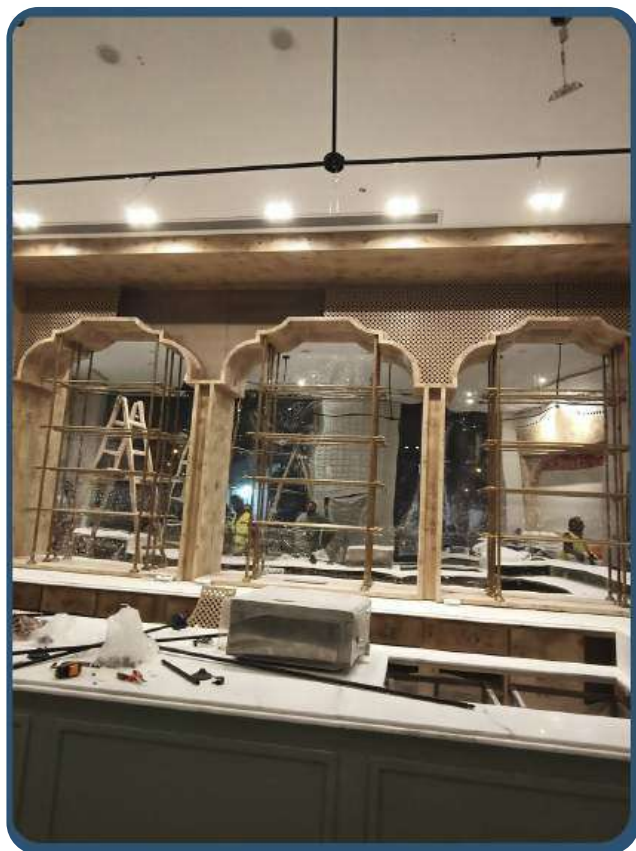




## Shawlaki - Yard Mall

This project involved the installation of various features for Shawlaki at The Yard Mall in Rehab City. It included eye-catching signage to enhance visibility, custom metal furniture and decorations that aligned with the brand's aesthetic, and a specially designed handrail for safety and style. Together, these elements created a cohesive and inviting atmosphere for visitors.







## TIA Maria - El Mohandseen

This project involved the design and installation of metal mesh decorations, light fixtures, and a counter structure for the TIA Maria location in El Mohandseen. The metal mesh added a contemporary artistic touch, while the light fixtures enhanced the ambiance of the space. The counter structure was crafted for functionality and style, creating an inviting atmosphere for customers.









## **ARTISTICO - District 5**

**The project involved the design and installation of a large metal unit and handrail for the Artistico location in District 5 Marakez. The huge metal unit served as a focal point, showcasing artistic elements and enhancing the aesthetic appeal of the space, while the handrail provided safety and accessibility, contributing to a modern and functional environment.**



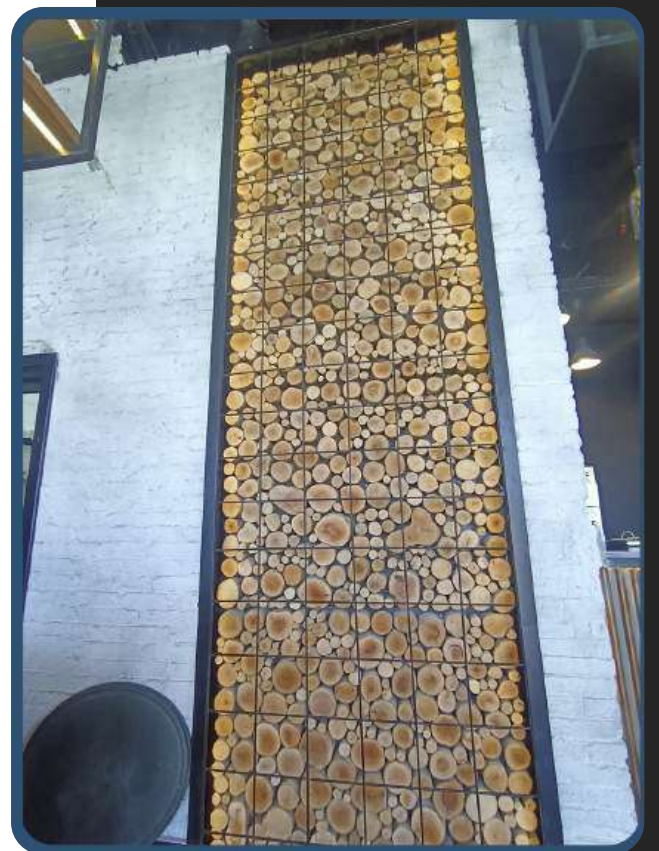
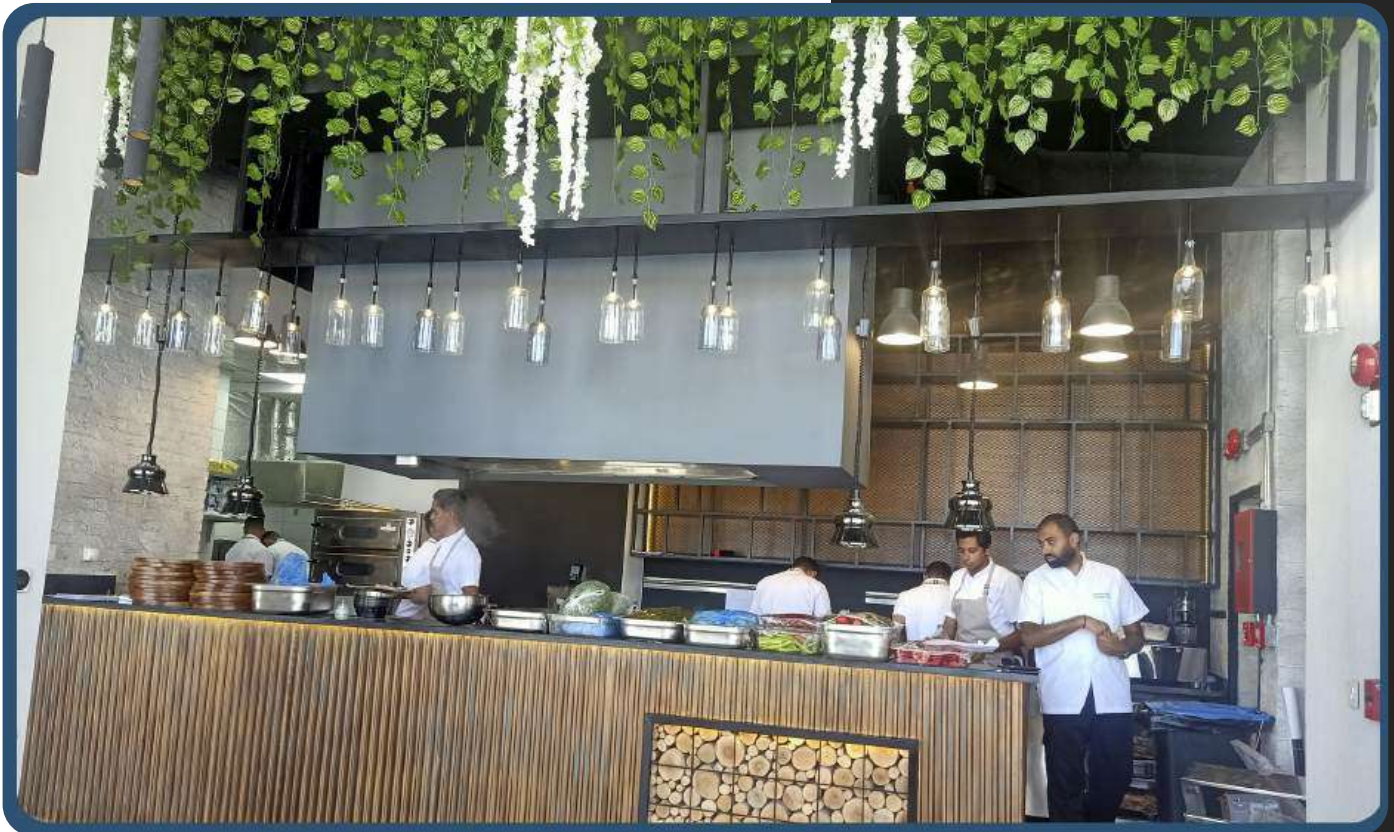




## Pipa - Marina Marassi

The project involved the design and execution of metal works for counter and hood finishing at Project Pipa in Marine Marassi. These metal finishes were crafted to enhance the aesthetic appeal and functionality of the space, providing a sleek and modern look while ensuring durability and quality in high-usage areas.









## Reform - Arkan Mall

The project involved the design and installation of a metal elevation, metal furniture, and a wire mesh ceiling for the REFORM store at Arkan Mall. The metal elevation created a striking visual impact, while the custom metal furniture provided both functionality and style. The wire mesh ceiling added an industrial flair, enhancing the overall aesthetic of the space and contributing to a modern shopping environment.



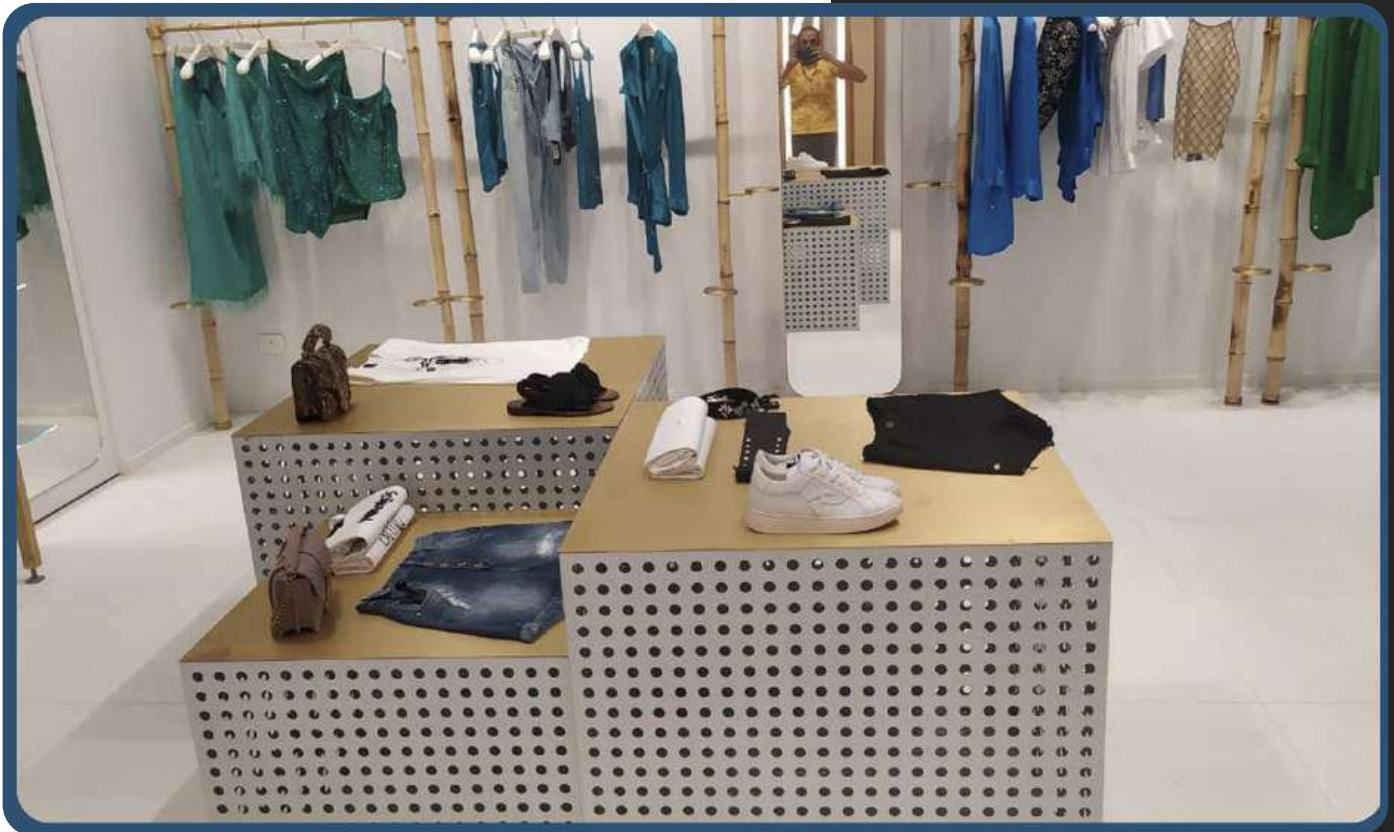




## **Pinko - Marina Marassi**

**The project involved the design and installation of brass furniture for the Pinko store at Marina Marassi. The brass furniture pieces added a touch of elegance and luxury, enhancing the store's sophisticated aesthetic while providing durability and functionality in the retail space.**







## Mountain View - HYDE PARK

The project involved the design and installation of street signage, columns, and building numbers for the Mountain View Hyde Park development in Fifth Settlement. The signage and building numbers were crafted to enhance navigation and visibility within the area, while the columns added architectural interest, contributing to the overall aesthetic and functionality of the development.







## Al Beiruti Restaurant - Arkan Mall

The project involved the installation of various metal features at Alburti Restaurant in Arkan Mall, including a metal folding door for efficient access, prominent signage for visibility, a fire-rated door for safety compliance, and metal cladding to enhance the exterior aesthetics. Additionally, stainless steel doors were incorporated for durability and a modern finish, contributing to the overall appeal and functionality of the restaurant.





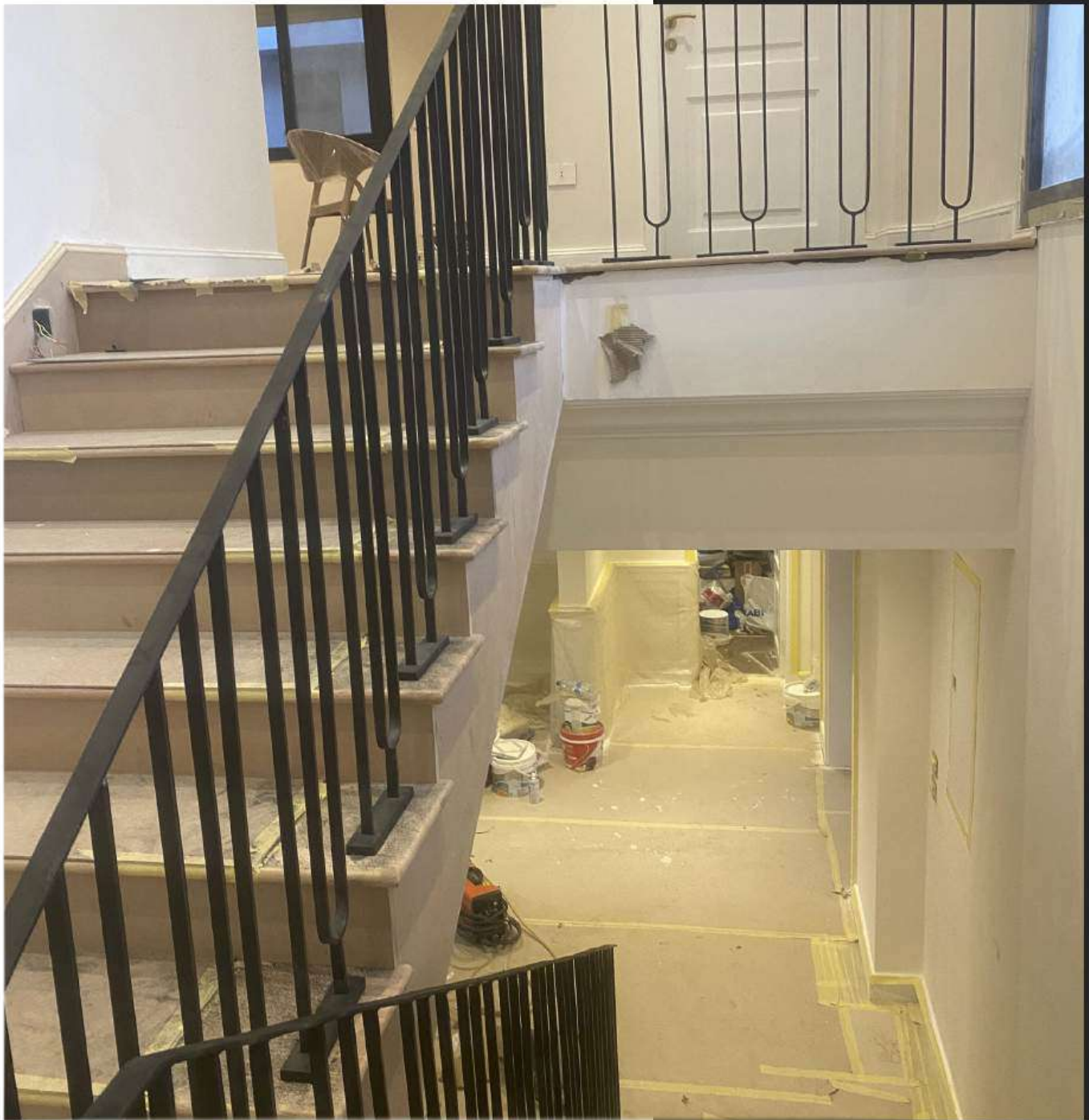


## **Al Beiruti Factory - 5th Settlement**

**This project focused on the installation of fire-rated doors at the Alburti Factory located in Fifth Settlement. The fire-rated doors were strategically designed to enhance safety and comply with industry regulations, providing critical fire protection while ensuring accessibility and functionality within the factory environment.**



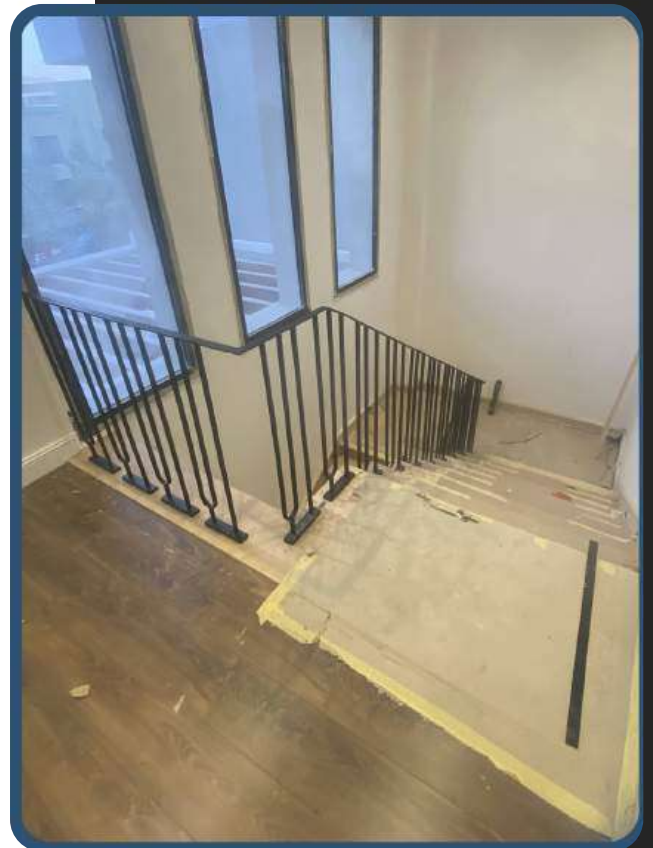
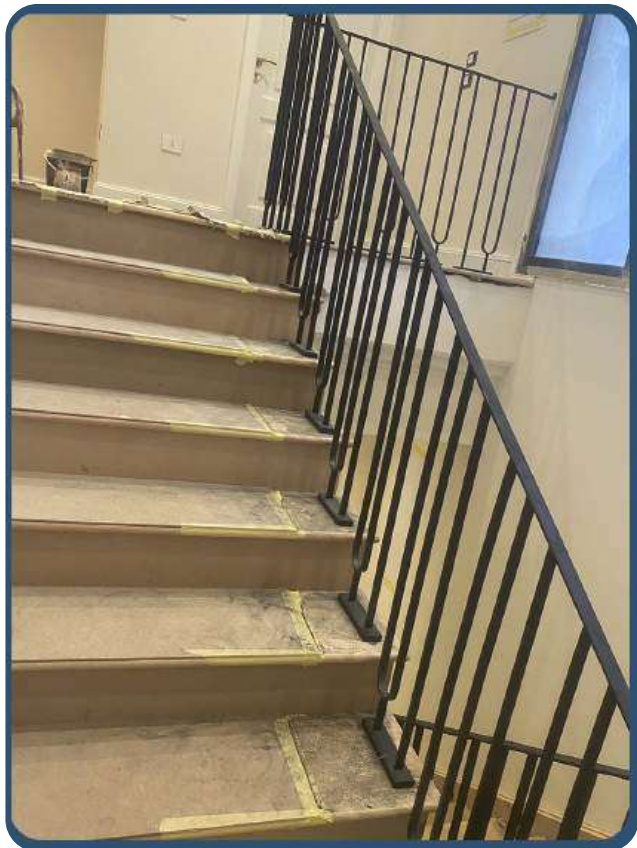
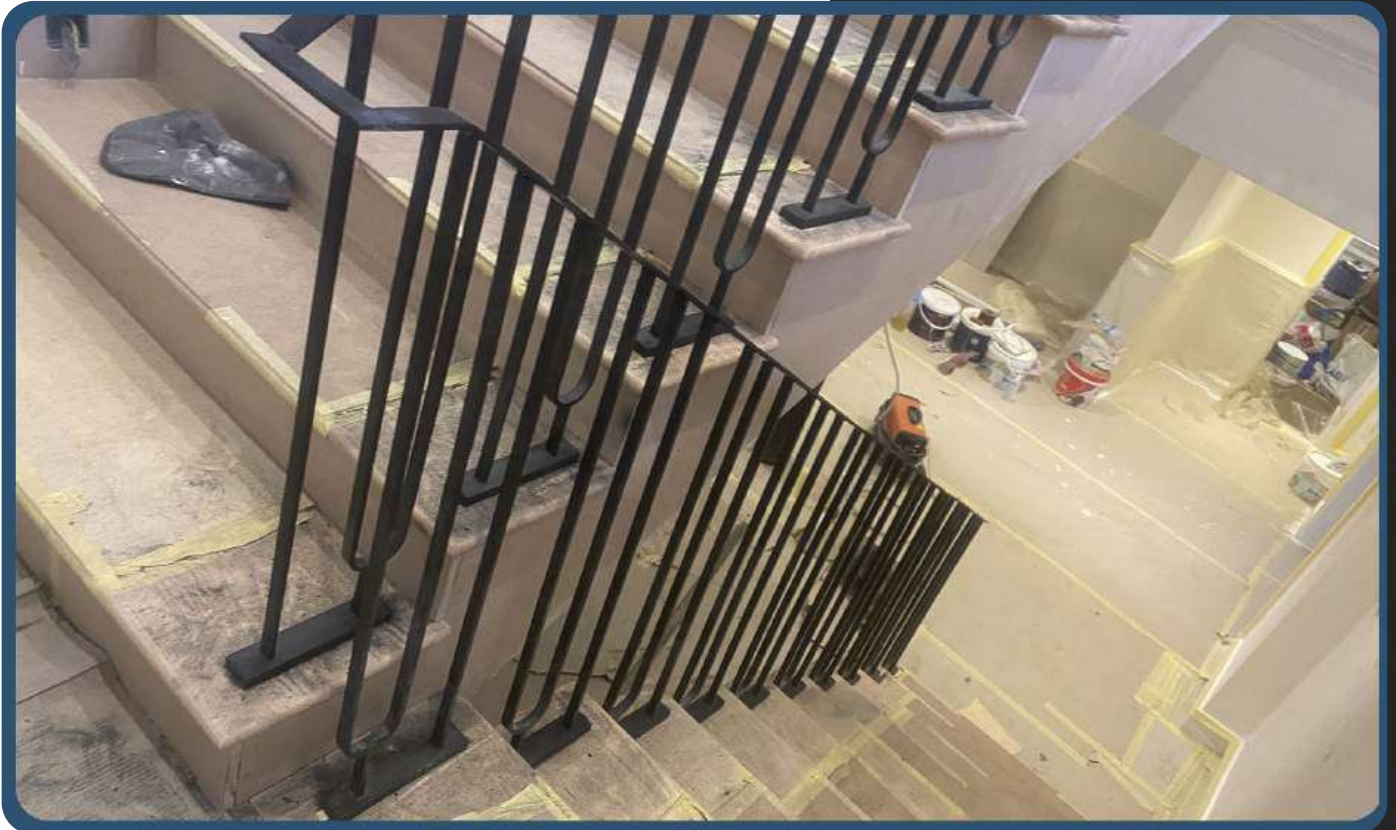




## Villa - Sodic Fifth Settlement

This project involved the design and installation of a metal handrail for a villa in Sodic Fifth Settlement. The handrail was crafted to ensure safety and accessibility while complementing the villa's architectural style, adding a modern touch and enhancing the overall aesthetic of the property.



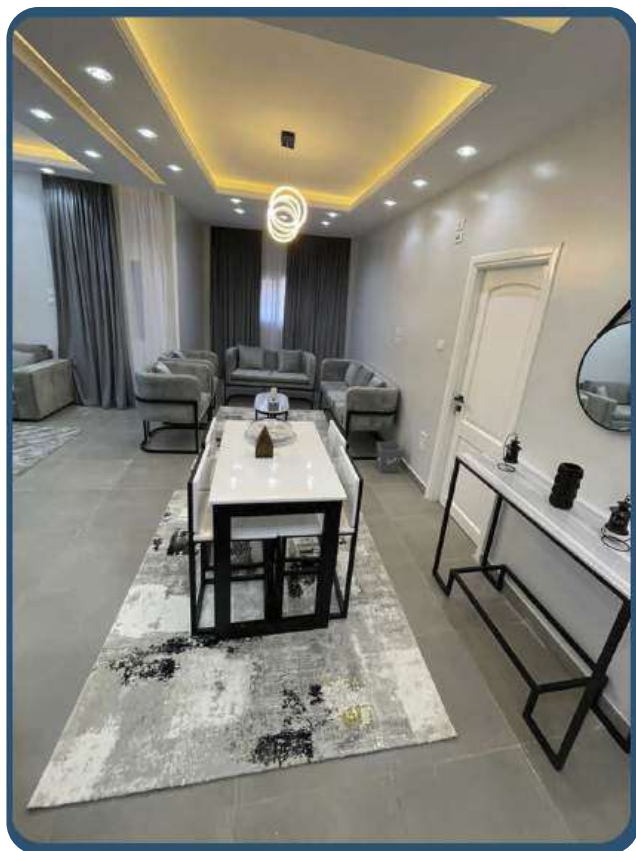


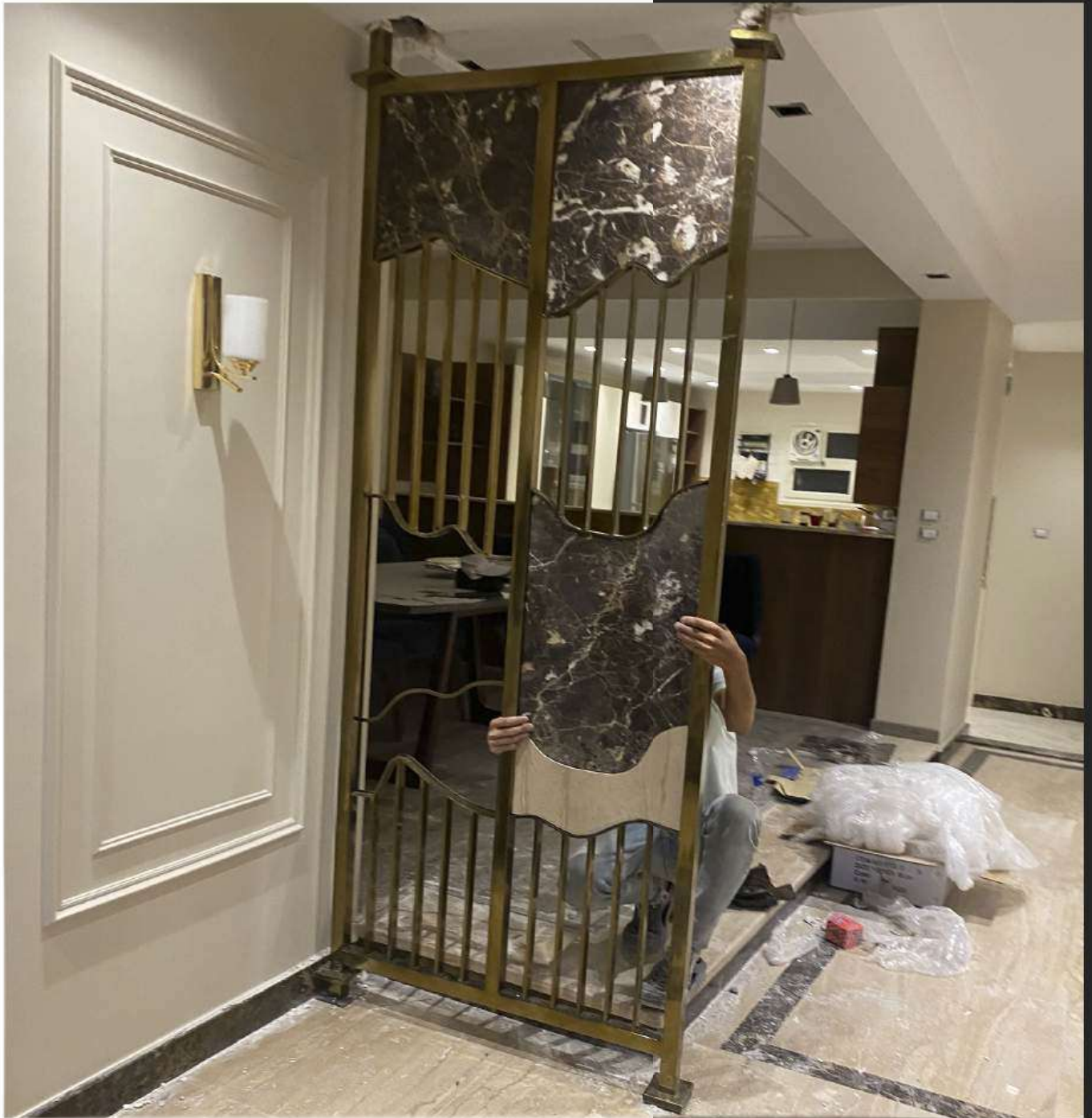


## Mansoura Apartment - Meet Ghamr

This project involved the design and installation of metal furniture for the Mansoura Apartment in Meet Ghamer. The metal furniture pieces were crafted to provide a modern and durable solution, enhancing the apartment's interior aesthetic while ensuring functionality and comfort for the residents.



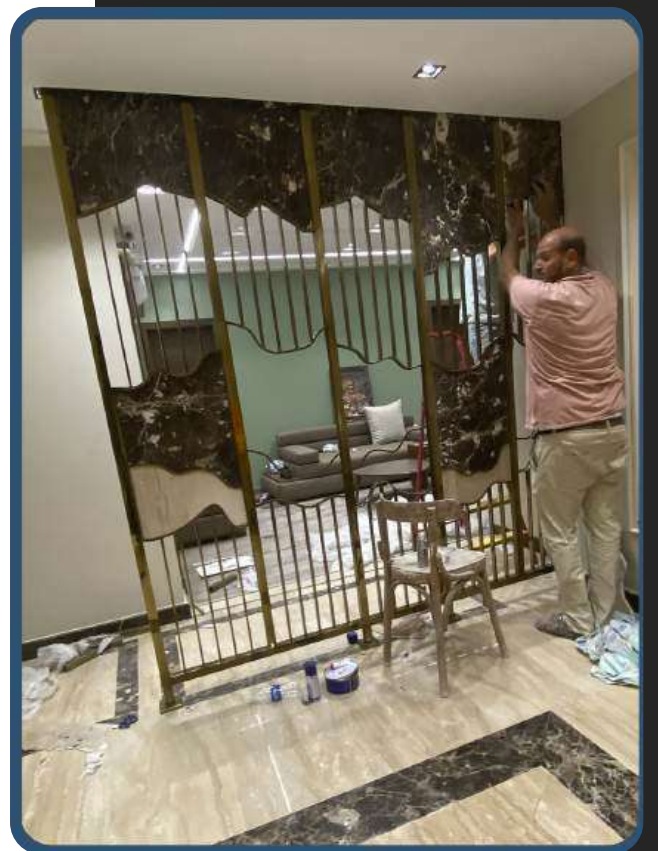


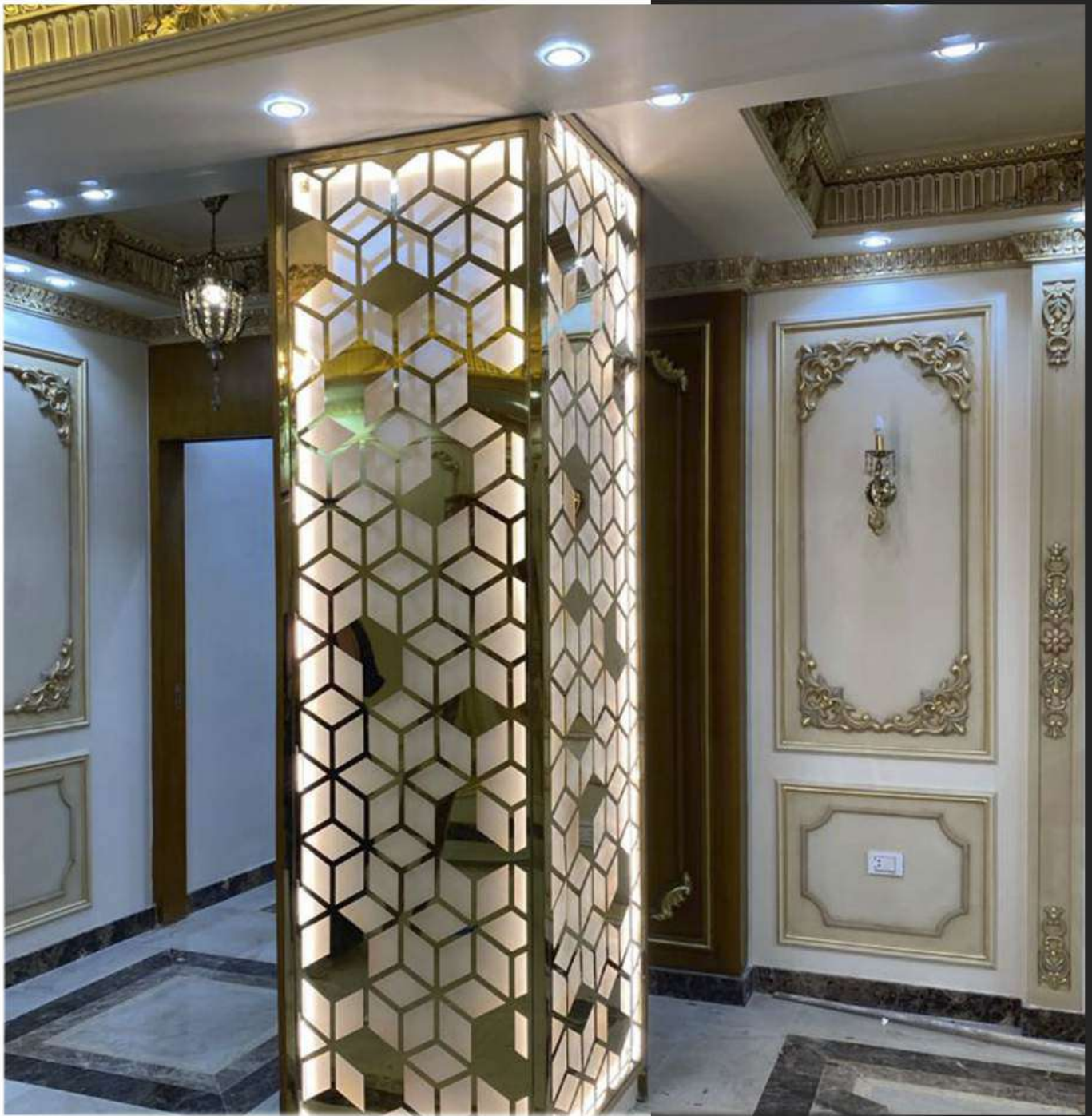


## AlQnatir AlKhayria Apartment

This project involved the installation of stainless steel partitions integrated with marble finishes for an apartment in AlQnatir AlKhayria. The combination of stainless steel and marble provided a sophisticated and contemporary aesthetic, creating elegant separation of spaces while enhancing the overall design and luxury feel of the apartment.



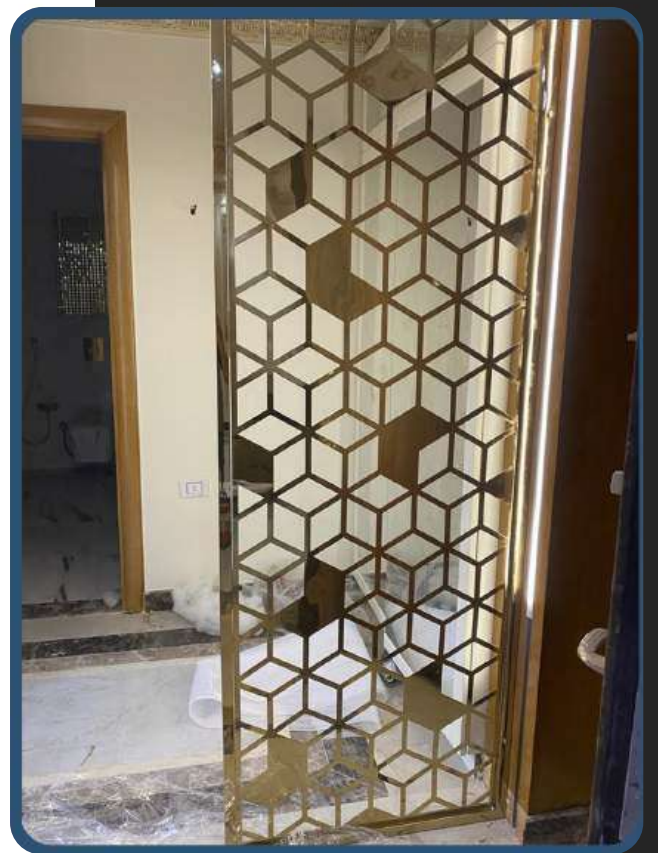
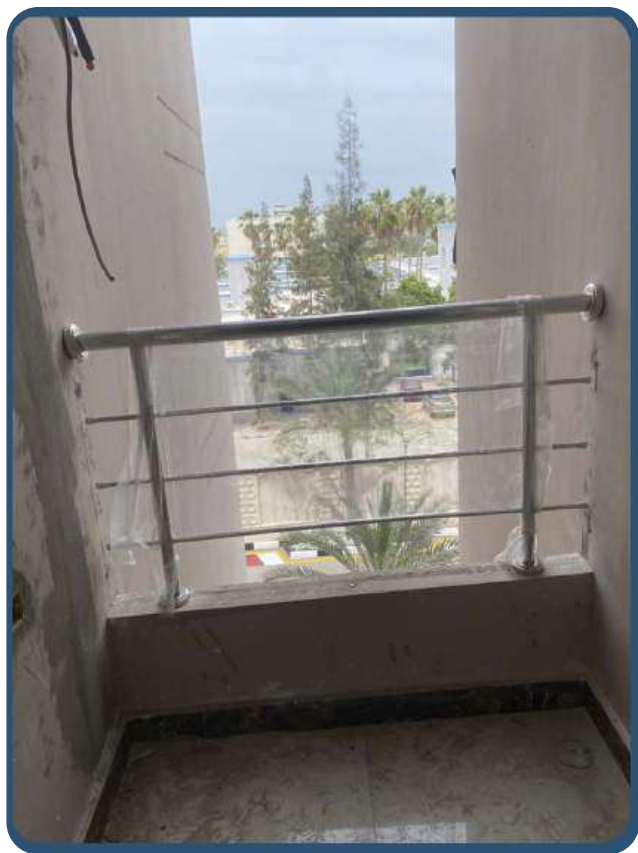


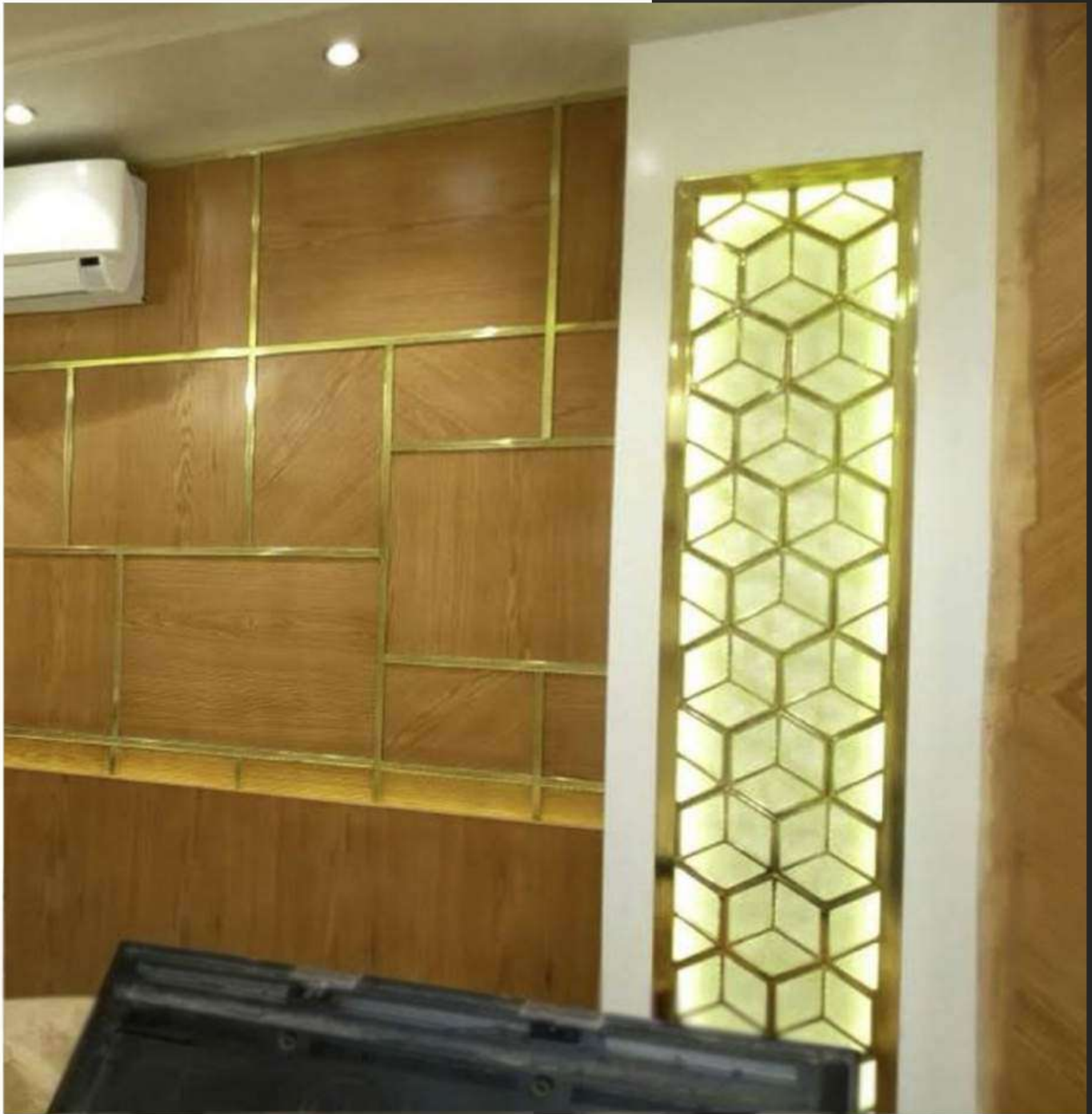


## Apartment - Mahalla City

The project involved the installation of stainless steel decorative elements, a custom-designed console, and handrails in an apartment in Mahallah City. The stainless steel features added a touch of elegance and modernity to the space, combining aesthetic appeal with functional support to enhance the overall interior design.







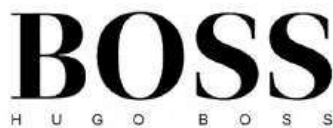
## **Brass Screen Project - Mansoura**

Executed in Mansoura for Eng. Yehia Mattar, this project features a handmade brass screen for a residential and head office space. The screen combines privacy with elegant design, showcasing intricate craftsmanship that complements the modern architecture. This installation reflects our dedication to delivering customized, high-quality solutions.





# Partners





# Contact Us



**Whatsapp: +20 128 036 0072 (Egypt)**

**Office Address: 42 Al-Asqalani Street, Gesr  
El Suez, Cairo, Egypt**

**Factory Address: 35 Al-Sharikat Street, Al-Zakat  
Foundation, Cairo, Egypt**



**Whatsapp: +966 560 381 856 (Saudi Arabia)**

**Address: Al-Yarmouk District, Riyadh, Saudi Arabia**



**/MSE Engineering & Contracting**

**MSE**  
ENGINEERING & CONTRACTING