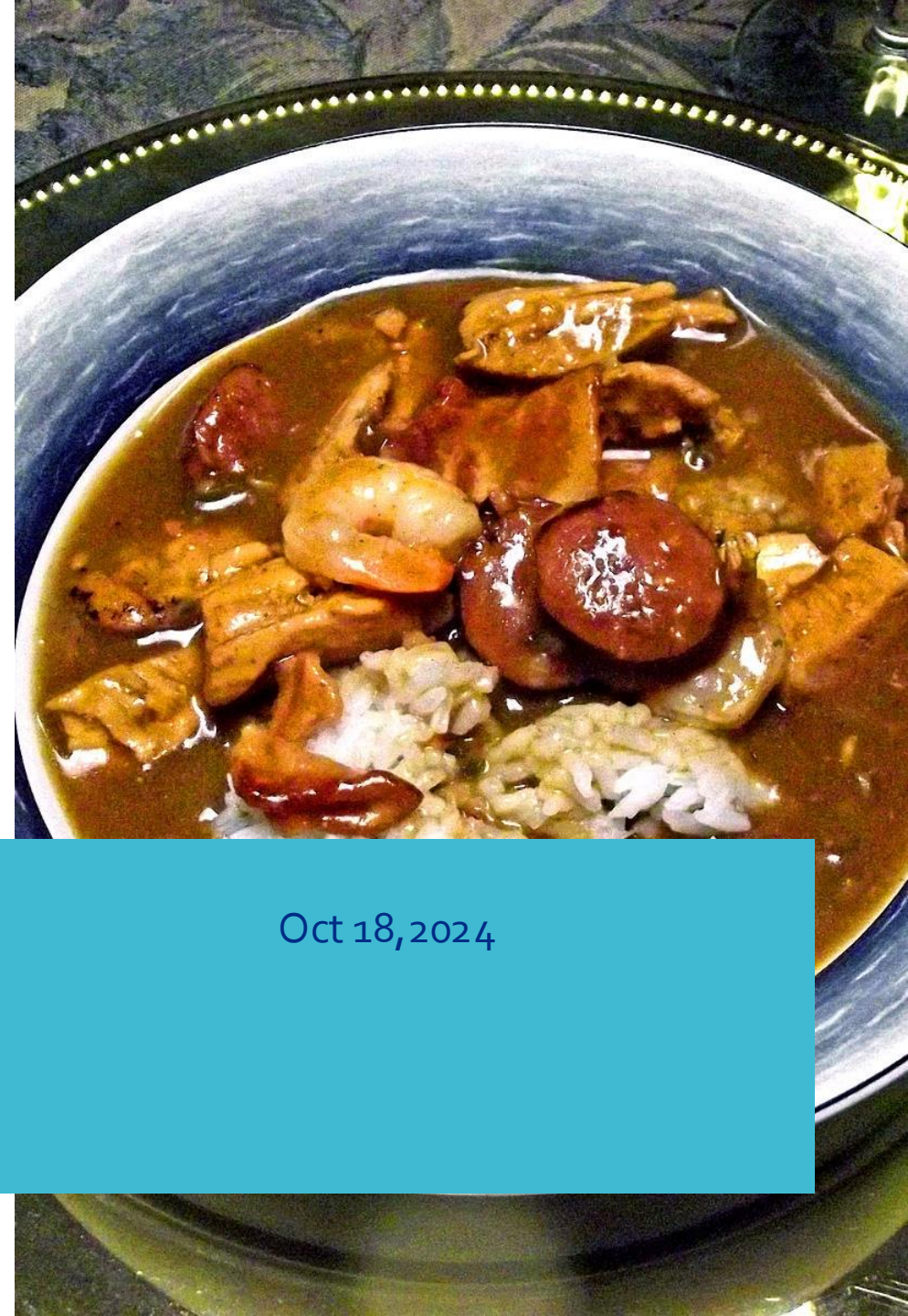




Quarterly Meeting & Gumbo Cookoff

GUEST SPEAKER: Suzanne Krieger - Chairman
St. Tammany Levee, Drainage & Conservation District

Oct 18, 2024





OLD BUSINESS



Manny Diaz, President



Lisa Laurendine, Vice President



Willard Nolan, Vice President



Carl Lamarque, Treasurer



Lionel Hanley, Secretary

cruise Director

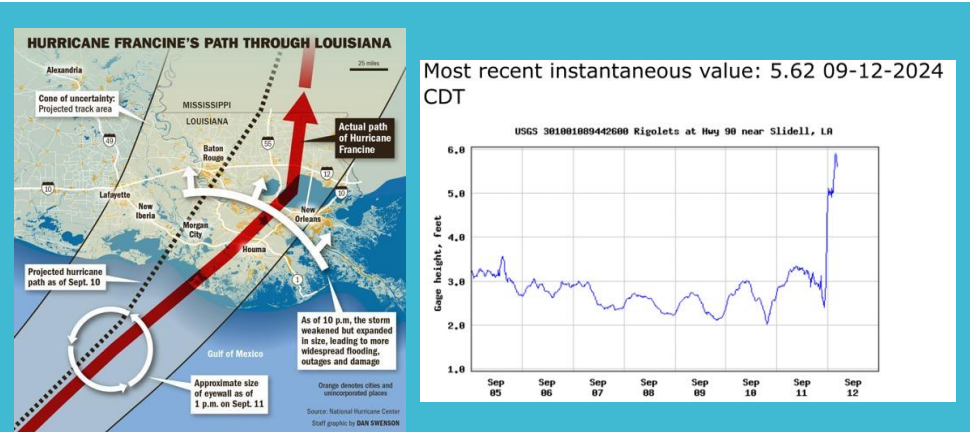


Janet Patton, Event Manager

Farewell to Summer Fest

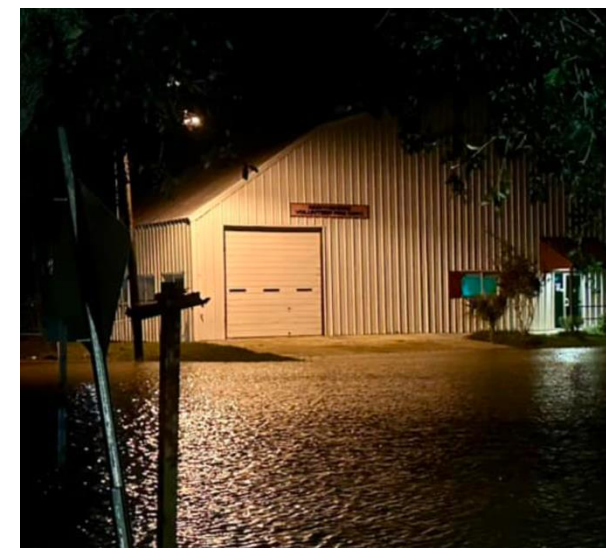
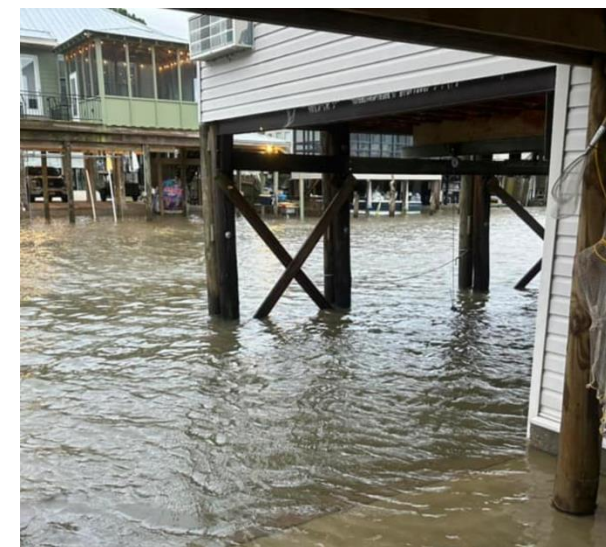
Despite the rain, we grilled and chilled, picked grabs, and danced to the DJ.





Hurricane Francine

We dodged a bullet. We got high water, but no damage.





Treasurer Report



Revenue

- Firehouse Income on track projected over \$50K
- \$100 HOA Membership due Jan 1

Expenses

- Paid \$8,616 for Firehouse Property Insurance
- Paid \$3900 for New. Fire Dept. Trailer
- Upcoming Flood Insurance \$5,426
- Safety & Community Programs Funded
- Fishing Tournaments Almost Breakeven

Its all good.

Current Balance \$27,375

- Detailed Report available on request

Carl J. Lamarque, CPA
Tax Preparation





NEW BUSINESS

Put on a mask, bring a side dish, and head to Clara Drive.

Two Piece Dark Meat Band

Costume contests, games, beer & wine.

Parking is limited so come in your golf cart or bicycle or park your car at the Firehouse.

Your hosts are Jake & Kaitlyn and the HOA.



HALLOWEEN STREET PARTY

Saturday, Oct. 26th 5:30 PM

232 Clara Drive



Nov. 7-9



SMACKDOWN!

Open to North Shore Beach families and friends. No professional anglers. Register tonight! Win prizes and bragging rights!

Thu Nov. 7, 7PM

Sat Nov 9, 6:00AM

Sat Nov. 9, 3-5PM

Sat Nov. 9, 5PM

Captains Party Hosted by Patton's
Competition Begins

Weigh-in, The Point Marina

Awards and Party, Blue Crab



Canal Dredging

Lloyd Blauvelt

Grant and Matching Parish funds

\$500,000 original budget

Original estimates from three contractors:
\$298,000 - \$358,000.

State Rep. Mary Dubuisson got state to
provide \$250,000

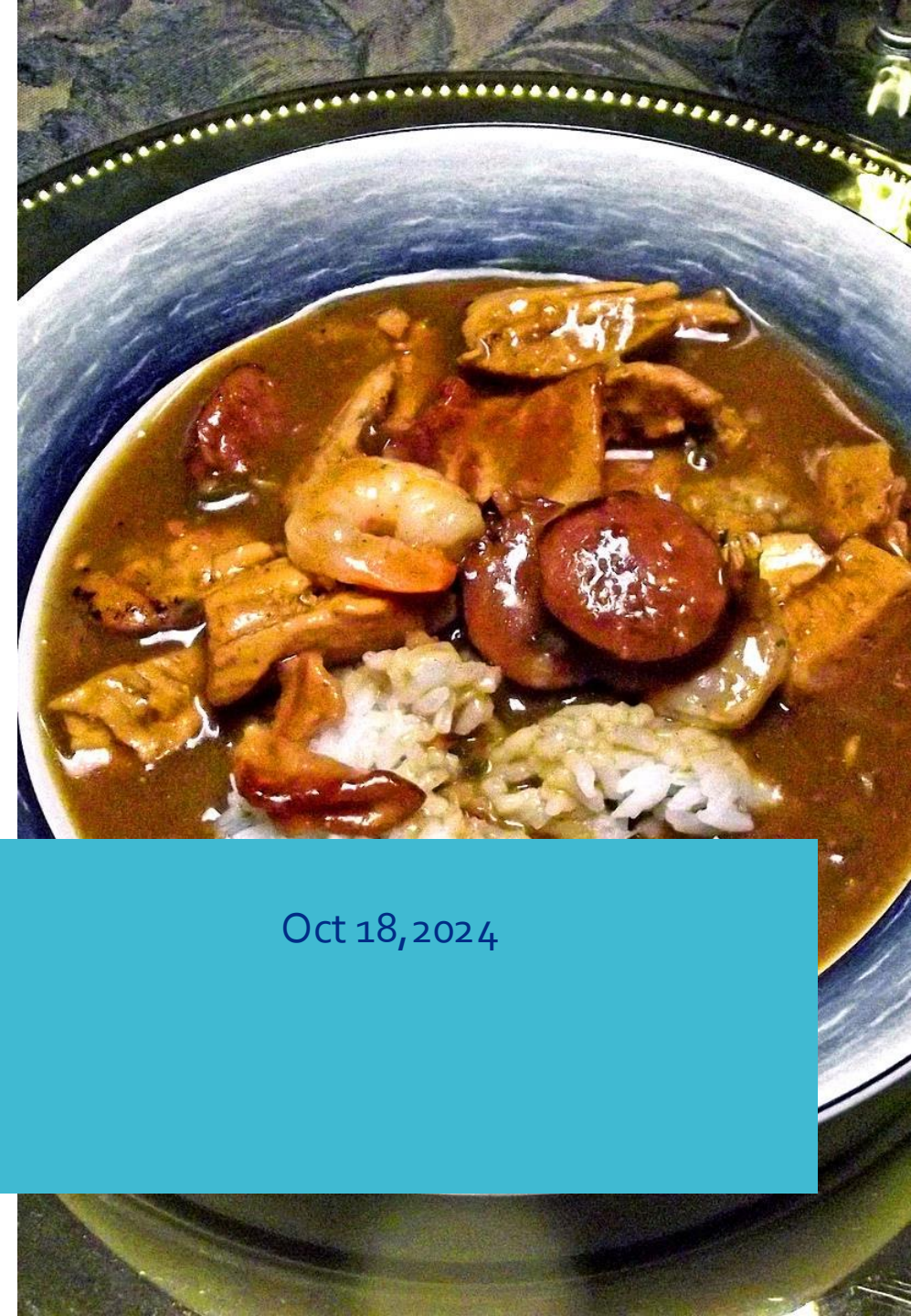
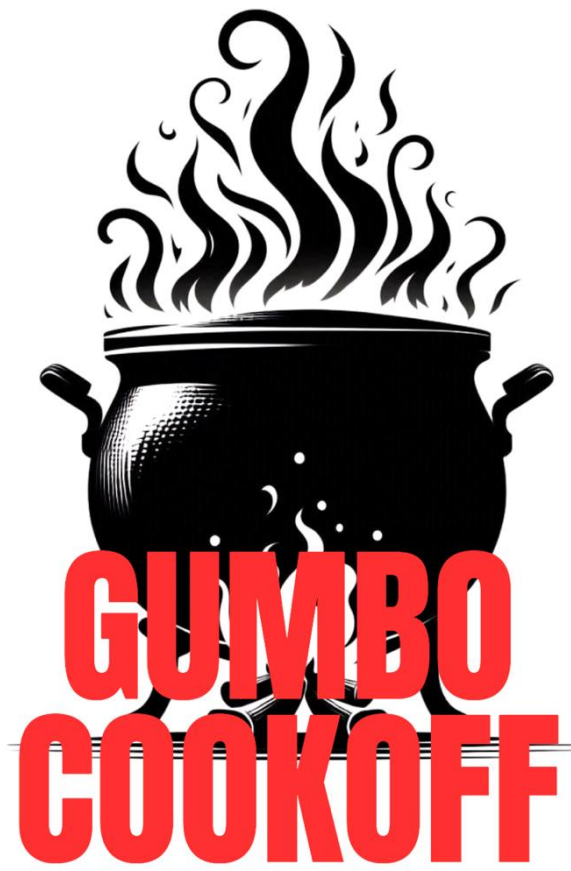
Randy Pausina, Tammy Parish Coastal
Management got \$250,000 from St.
Tammy Parish.

Revised costs are \$400,000 more than
original estimates before Covid.



NEXT STEPS:

1. Parish adding remaining \$400K needed
2. Dr. Bopp sign off on spoils deposit area
3. Go out for bids



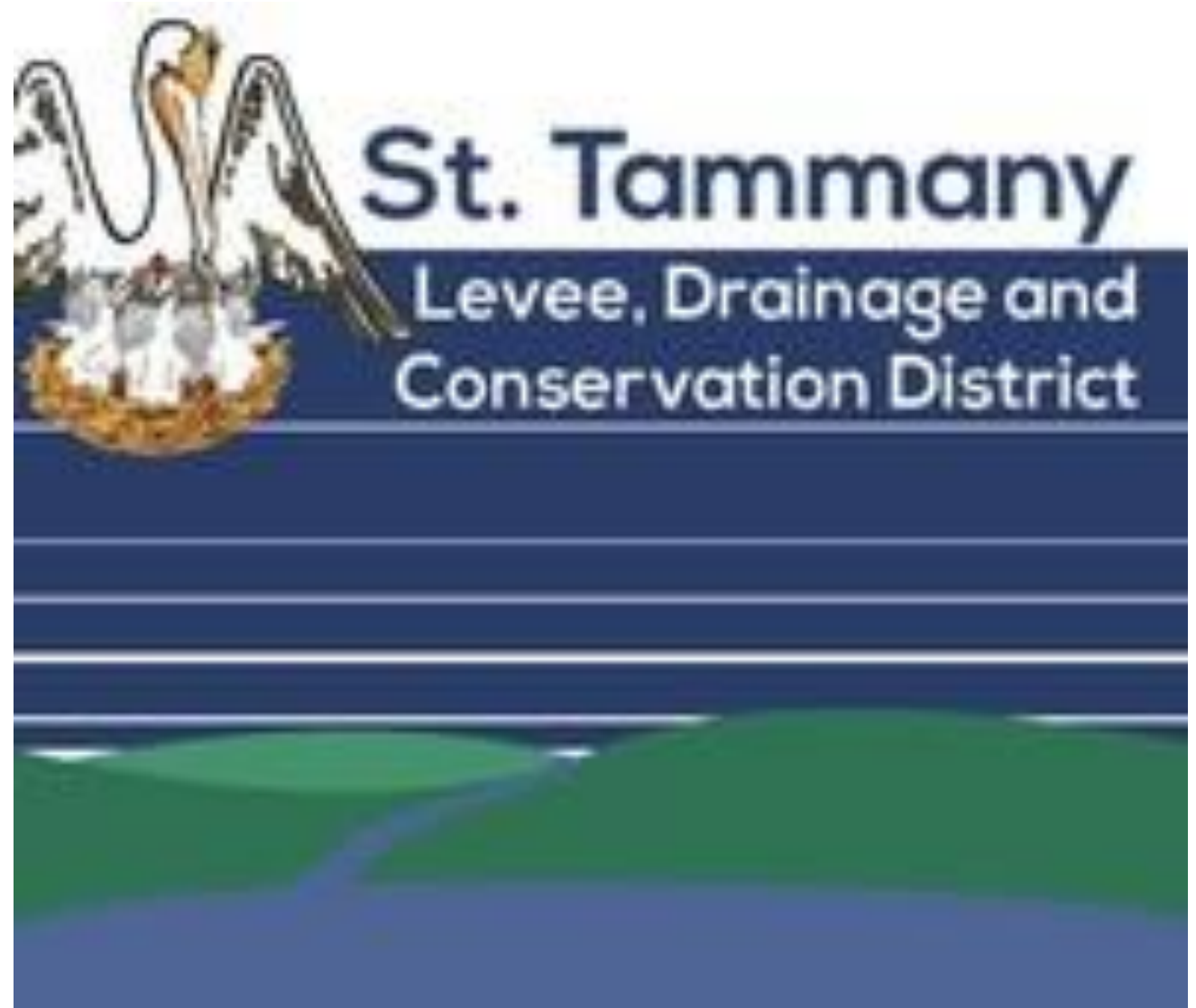
Oct 18, 2024

The winner is...

NEW BUSINESS

GUEST SPEAKER:
Suzanne Krieger

Chairman, St. Tammany Levee,
Drainage & Conservation District





STLDCD Mission

Created during the 2014 state legislative session, the nine-member St. Tammany Parish Levee, Drainage and Conservation District, populated by gubernatorial appointments from various communities throughout St. Tammany

A political subdivision of the state and has the primary duty to "...establish, construct, operate, or maintain flood control works related to hurricane protection, tidewater flooding, saltwater intrusion, and conservation."

<https://www.stldcd.com/>



STLDCD Projects for North Shore Beach

- Northshore & Eden Isle Breakwaters
- Faciane Canal Marsh Restoration
- Lake Pontchartrain Barrier
- U.S. 11 Widening & Elevation

Northshore & Eden Isle Breakwater

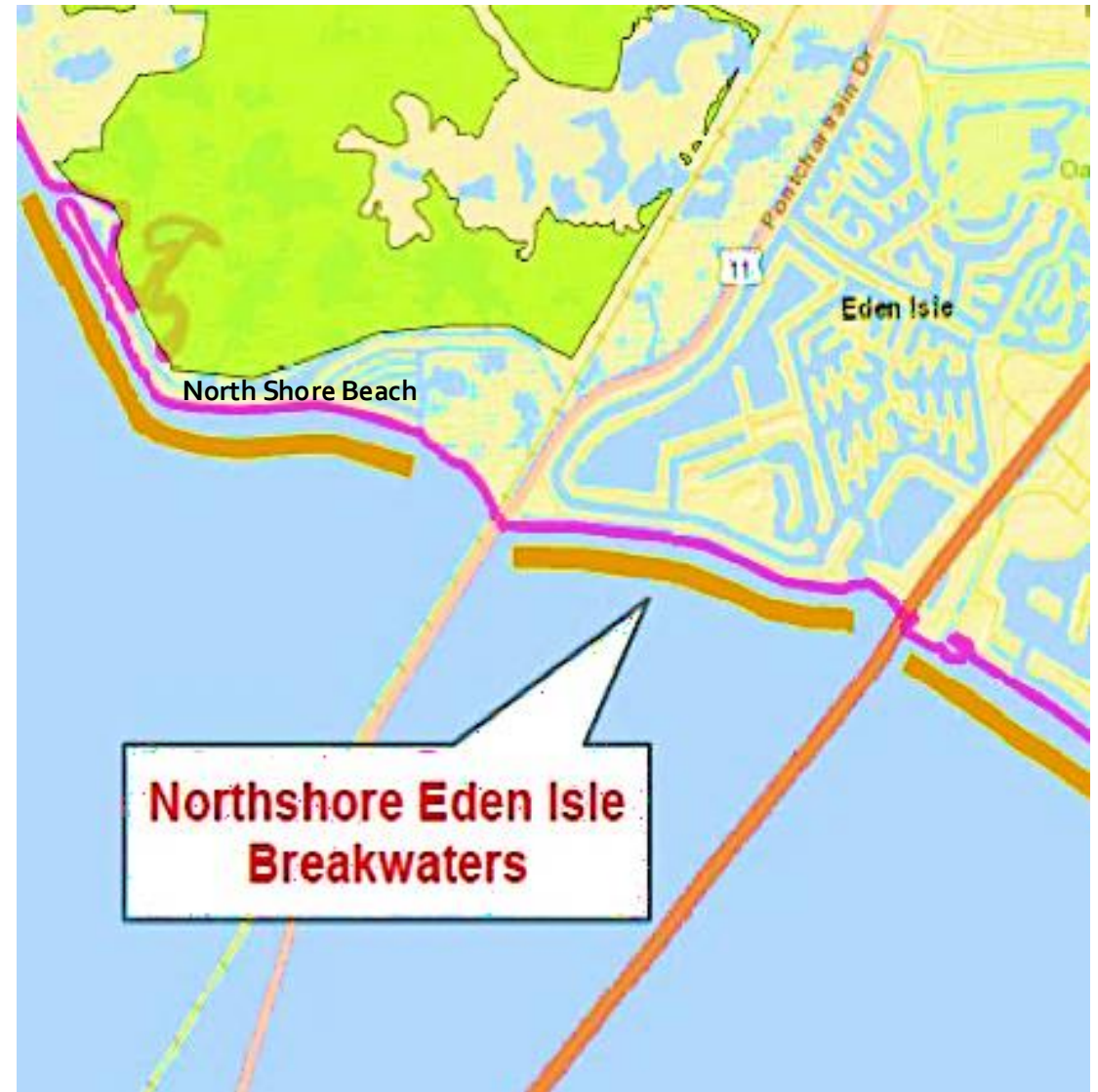
Shoreline protection and coastal resilience of NSB increases property values, reduces risk.

Protects homeowners along Carr Drive and Debbie Drive from erosive effects of wave action

Required to protect future marsh creation projects around NSB

Reduces erosion at North Shore Beach

Acts as a reef, increasing habitat for fish, crabs, birds



RESTORATION PROJECTS

NORTHSHORE / EDEN ISLES BREAKWATER

DESCRIPTION: This proposed project is a segmented offshore rock breakwater from east of the I-10 Twinspan Bridge to the mouth of Bayou Liberty. The breakwater would be approx. 5.5 miles long and provide shoreline protection for the community of Eden Isle. The project would also provide future protection from wave erosion for the St. Tammany Marsh Creation project. The project would also provide additional fisheries habitat as well as coastal resilience for greater Slidell community.

Conceptual planning has been done on this rock breakwater project. The segmented offshore rock breakwater feature has a conceptual design elevation of approximately 3.5 FT. NAVD 88.

REASONS FOR PROJECT SELECTION: This living shoreline project offers the following potential benefits:

- Provide shoreline protection and coastal resilience for the communities in Eden Isles, Oak Harbor, Carr Drive and Palm Lake
- Provide protection to the coastal areas of Slidell from erosive effects of storm enhanced wave action
- Future protection for the proposed CPRA Master Plan Project, St. Tammany Marsh Creation
- Provide fisheries habitat and restore habitat for native flora and fauna

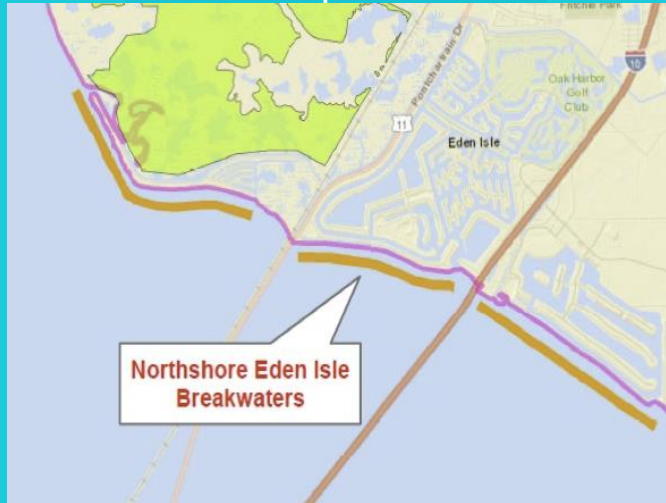
PROJECT COST INFORMATION: This 5.5-mile segmented offshore breakwater project has a total estimated construction cost of approximately \$29.25M (including contingency).

REQUIREMENTS FOR FEASIBILITY ANALYSIS:

1. Hydraulic/Wave Modeling
2. Develop conceptual sizing and layout for the segmented rock breakwaters
3. Develop conceptual data collection requirements and collect preliminary geotechnical and survey information
4. Refine conceptual cost estimates



Northshore / Eden Isles Breakwater



Do we want the Northshore Breakwater?

PRO

- Shoreline protection and coastal resilience of NSB increases property values
- Protects homeowners along Carr Drive and Debbie Drive from erosive effects of wave action
- Required to protect future marsh creation projects around NSB
- Reduces erosion at the beach
- Acts as a reef, increasing habitat for fish and crabs

CON

- Interrupts the view



Faciane Canal Marsh Creation



- 2854 acres of marsh creation
- Borrow from the Lake along the channel to Bayou Bonfouca
- Improves wildlife habitat along Carr Drive
- Protects Slidell and North Shore Beach



Faciane Canal Marsh Creation

Faciane Canal Marsh Creation.

The goal of this project is the restoration of 1,997 acres of low salinity marsh as well as the nourishment of 630 acres of stressed marsh using sediment that is hydraulically dredged from Lake Pontchartrain.



Project Summary

The Faciane Canal Marsh Creation project is a 2,853 acre marsh creation project located in St. Tammany Parish along the Lake Pontchartrain Shoreline. This project is located near Bayou Bonfouca with most of the site being located on the Big Branch Marsh National Wildlife Refuge. The low salinity brackish marsh in this area was reasonably stable until Hurricane Katrina. Over the following decade this area has seen an increase in open water by nearly double, far exceeding the previous rate of deterioration. With an increase in tidal exchange due to small breaches in the

shoreline and increased wind driven fetch, the rate of marsh loss is expected to continue. Sediment would be placed throughout the site to a height of +1.2 NAVD 88. Tidal creeks exist and would be maintained in order facilitate water exchange and fisheries access.

Project Attributes

Area: 2853 Acres
Latitude 30.2424, Longitude -89.825230
Dike Elevation: 1.2' NAVD
Borrow Source: Lake Pontchartrain
Fill Volume: 9,199,670 yd³

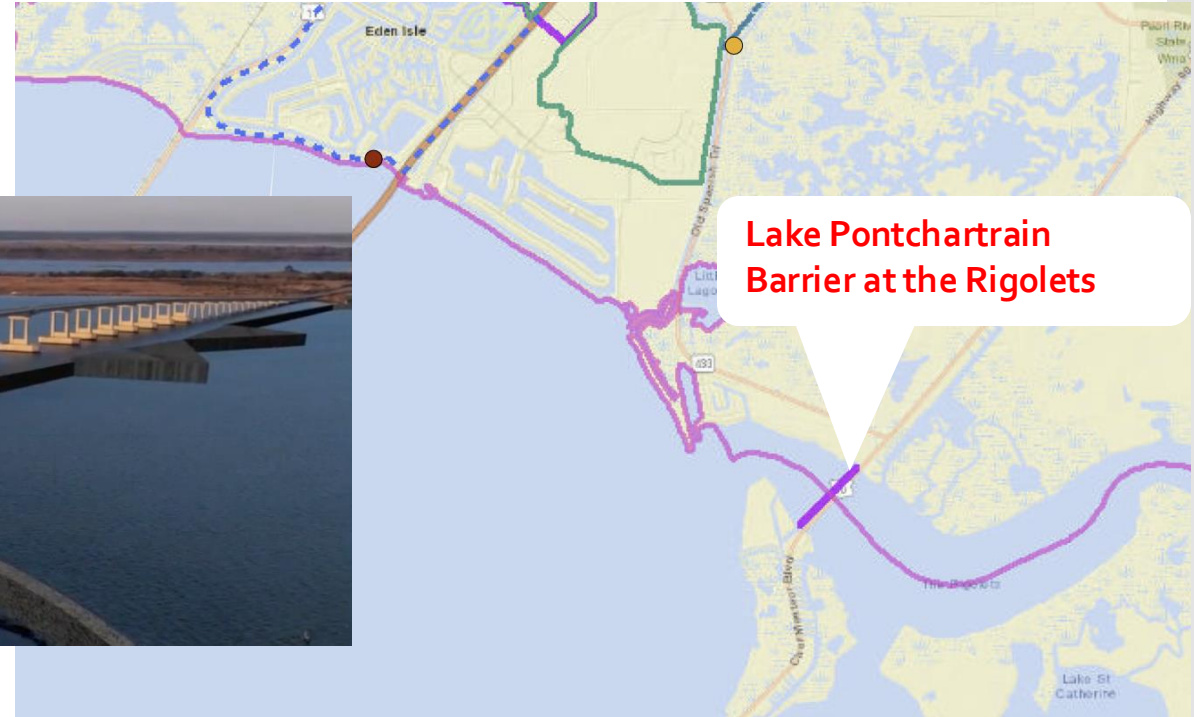
Project Specification

Estimated Construction Cost	\$ 59,377,743
Estimated Construction + Contingency	\$ 74,222,179



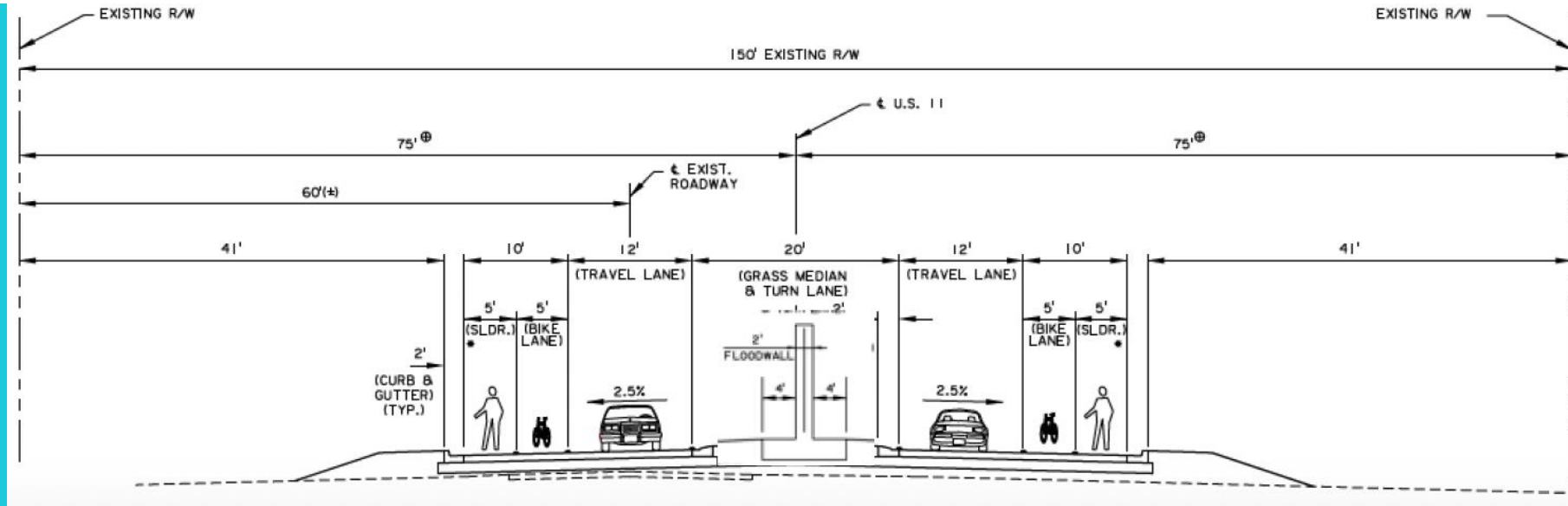
<https://www.wvtv.com/video/news/local/lake-pontchartrain-barrier-project-hopes-to-lessen-storm-flooding/289-a9121714-913d-4e81-a9f2-6cdd688a712b>

Lake Pontchartrain Barrier

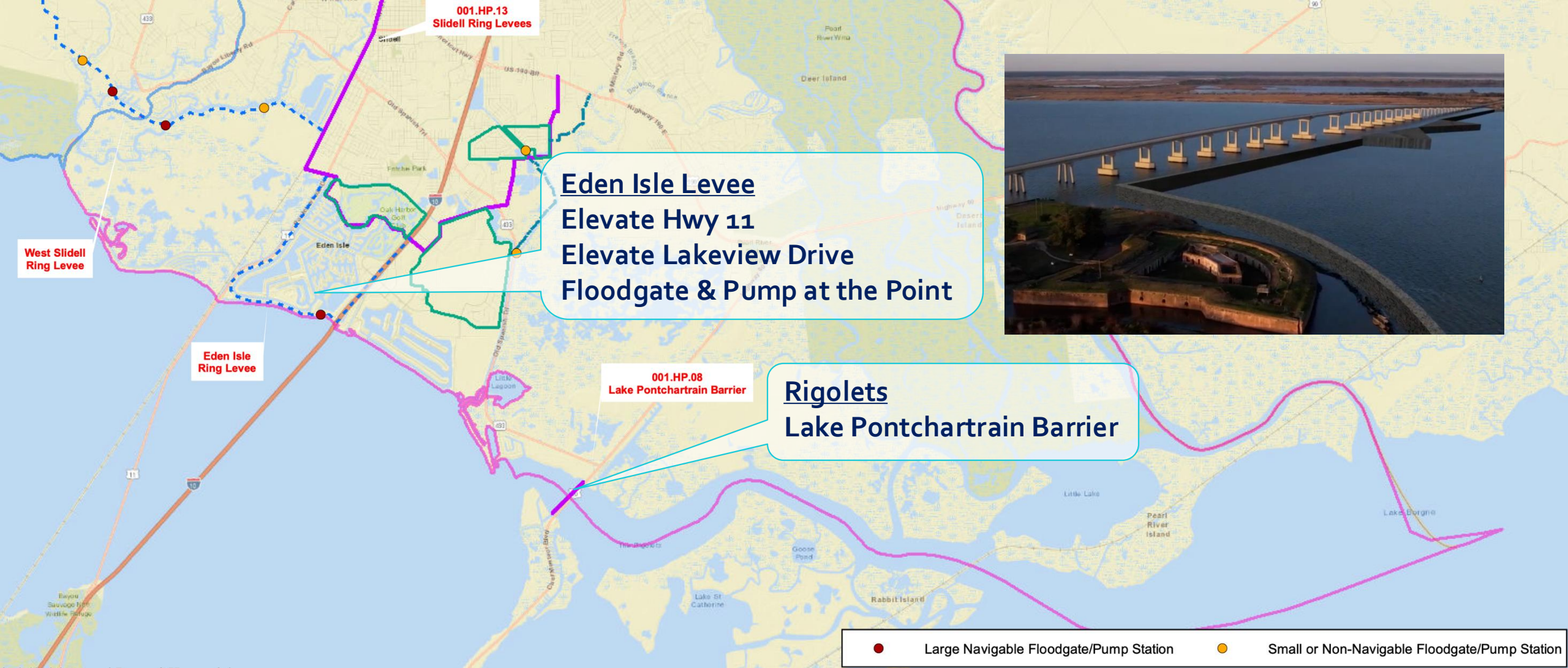


- Gates at the Rigolets
- Reduce affect of storm surge
- 10 Parishes Promoting this \$1.3 B project

U.S. 11 Elevation



- Important evacuation route for North Shore Beach
- Widen and Elevate Hwy 11 from Walgreens to the Lake
- Adds median, bike lane, shoulder, landscaping
- Floodwall in median at later date



1. Rigolets barrier would limit surge entering the lake that affects NSB.
2. Slab homes in Eden Isles protected by elevated roadways, rear levee, pump.
3. NSB homes on piers outside levee. Lower homes eligible for elevation grants.

Northshore & Eden Isle Breakwater

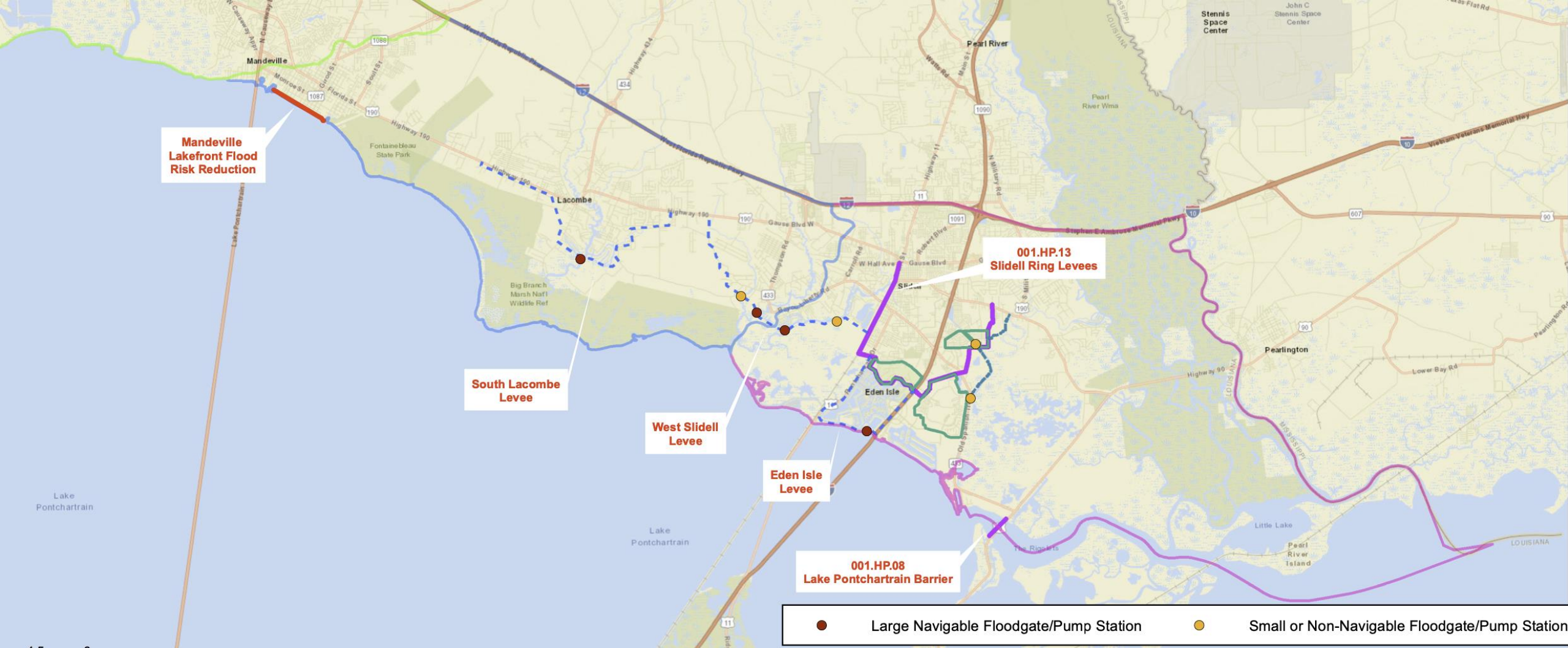


Legend

- | | |
|-----------------------|--|
| Western Planning Zone | Proposed Marsh Creation Project |
| Central Planning Zone | Planned Marsh Creation Project (CPRA/STPG) |
| Eastern Planning Zone | Hydrologic Restoration |
| Shoreline Protection | |
| Living Shoreline | |

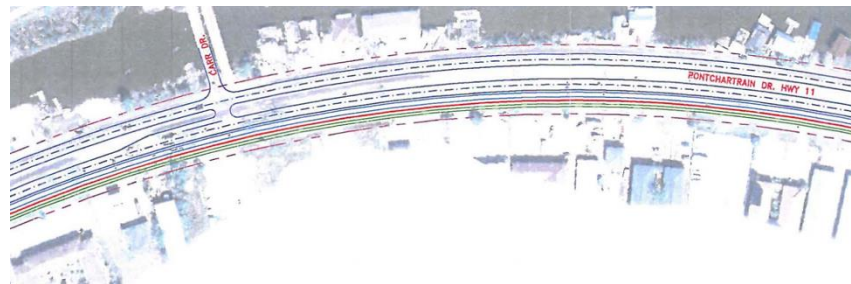
Hydraulic models show:

1. A breakwater would help protect North Shore Beach and Eden Isles who are most exposed to tidal surge after the storm passes.
2. Protects homes and marsh restoration projects from erosion.





How does Eden Isle Ring Levee Help NSB?

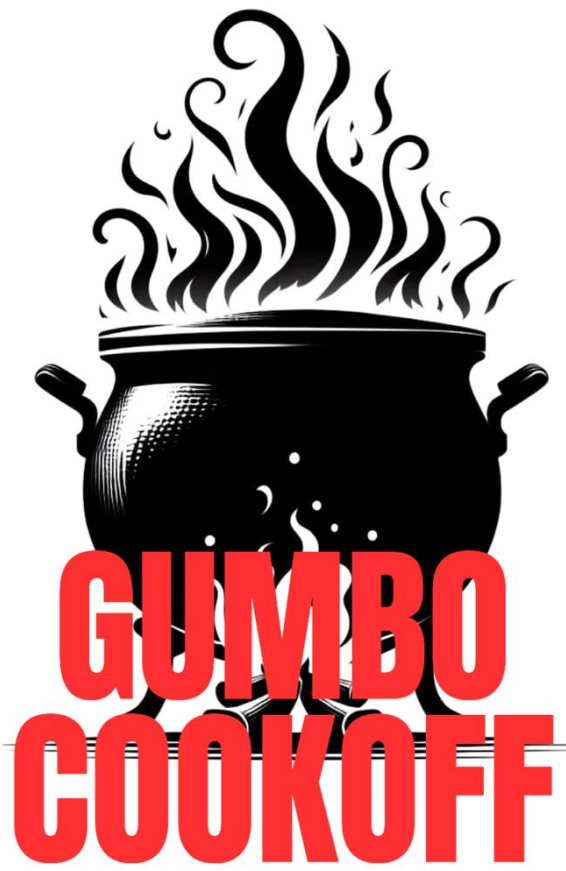


PRO

- Matching funds accelerate DOTD plan to widen and landscape U.S. 11 from Walgreens to the Lake.
- Elevated U.S. 11 ensures access to/from NSB
- More lanes on U.S 11, traffic circle for safer intersection at Carr Drive bridge
- Landscaping U.S. 11 raises property values

CON

- Does Eden Isle levee direct more water to NSB?
 - Rigolets barrier should limit incoming surge
 - Eden Isle levees overtop at 9ft.
 - NSB homes on piers 11 – 20 ft msl



Quarterly Meeting & Gumbo Cookoff

GUEST SPEAKER: Suzanne Krieger - Chairman
St. Tammany Levee, Drainage & Conservation District

