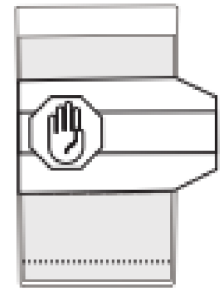
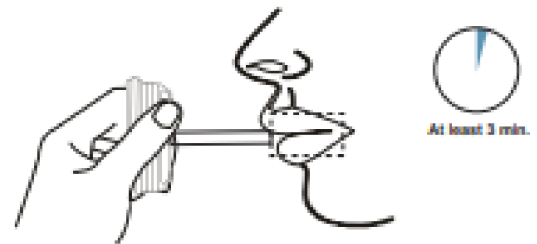


O.F. DRUG TEST (F) PROCEDURE CARD

- Bring tests and specimens to room temperature (15-30°C/59-86°F) before use. Donors should avoid placing anything (including food, drink, gum and tobacco products) in their mouth for at least 10 minutes prior to specimen collection.
- The oral fluid specimen should be collected using the collector provided with the kit. No other collection devices should be used with this drug test.

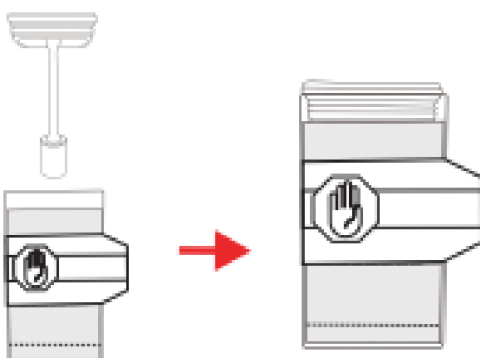


- 1** Using the provided collection swab, remove the collector from the sealed pouch. Open mouth and insert the collection swab in the oral cavity. Gently rub the swab against both cheeks 5-10 times, gums 5-10 times and surface of tongue 5-10 times. Place the swab underneath the tongue for **at least 3 minutes** until sponge is soft and fully saturated. **No hard spots should be felt on the sponge when saturated, and usually there is a lot of saliva overbrim in the mouth at that time.**

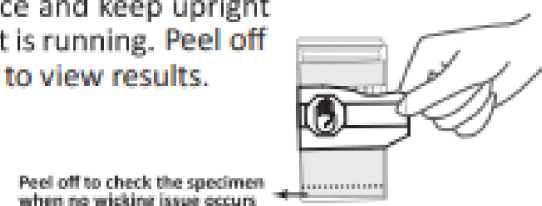


Important: Do not bite, suck, or chew on the sponge. It is critical that the collector is held horizontally during collection.

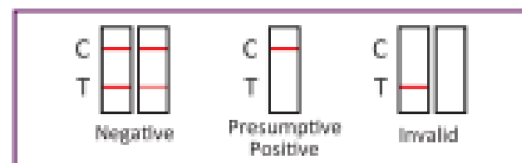
- 2** Place the test device upright on a clean flat surface. Remove the collection sponge from the mouth and insert the sponge first into the screening device **gently and slowly**, press until the collector cap sealed with the device tightly. **Keep upright when inserting the sponge.**



- 3** Keep test device upright on flat surface and keep upright while test is running. **Peel off the label to view results.**



- 4** Read the results **at 10 minutes**. Read **saliva alcohol pad at 3 minutes**. **Please compare the color on alcohol strip to enclosed color chart.**



Notes and Troubleshooting: 1. Once the collection sponge locks in place, the device is airtight, tamper evident, and ready to be disposed of or sent to lab for confirmation (on presumptive positive result).

2. If the strips do not wick, please peel off the label at the bottom of the device as marked to check if either there is enough specimen or the oral fluid is too thick or viscous to run.

3. In the case of no flow when there is enough oral fluid or the oral fluid is too thick to run: move the device, while keeping upright and not tilting, back and forth on a flat and clean surface several times until the oral fluid flows up the strip. Peel off the specimen label to check and make sure the oral fluid is touching the strips. Do not tilt the device when the test is running before reading results.

4. Oral fluid tends to form air bubbles which sit at the bottom of the strip and prevent the strip from running. Gently tap the device on the table or counter surface popping the air bubble allowing capillary action to begin, thus initiating the test.