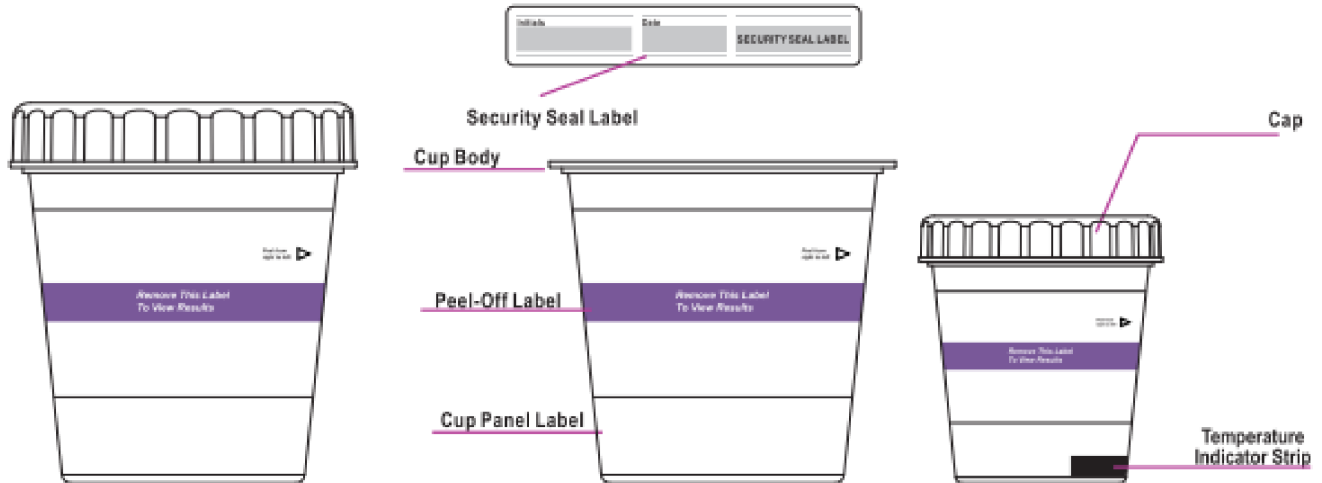


DRUG TEST CUP (RND) PROCEDURE CARD



1 Collect urine specimen. If desired, cap can be held by operator. urine specimen between minimum 30 mL to maximum 110 mL (Marked on the cup).

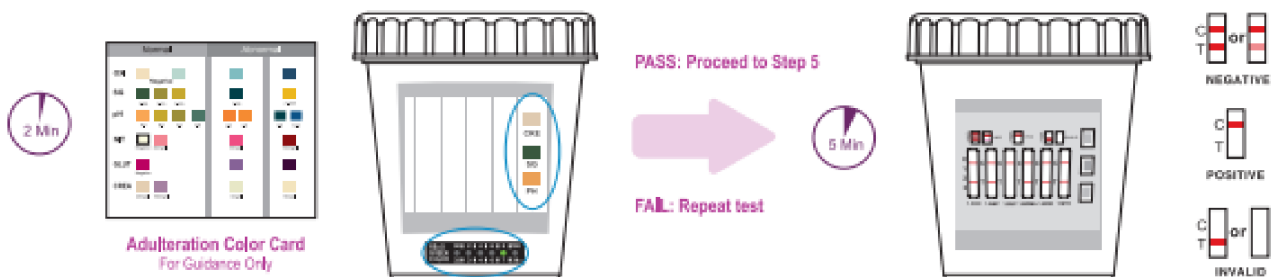
2 Once urine sample has been collected, screw cap firmly until you hear a click. Operator checks cap for tightness.

3 Remove peel-off label.



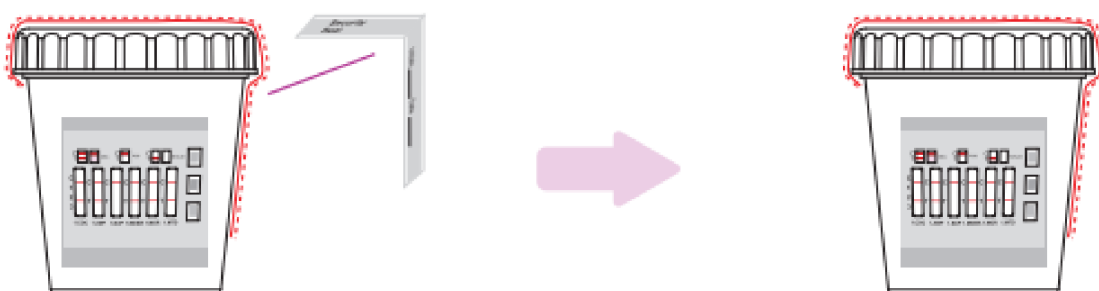
4 After 2 minutes check urine temperature by reading green mark on temperature indicator strip. If applicable, read adulteration strip pads against enclosed color card.

5 Read test results at 5 minutes. Refer to diagram below for result interpretation.



6 If there is presumptive positive result, operator attaches the security seal label over cap as shown, with donor's name, initials and test date.

7 Presumptive positive test results must be confirmed by another test method. Send cup and urine specimen with security seal label intact to a toxicology laboratory by GCMS or LC-MS/MS for confirmation.



Important: Do not cover test result window with the seal.