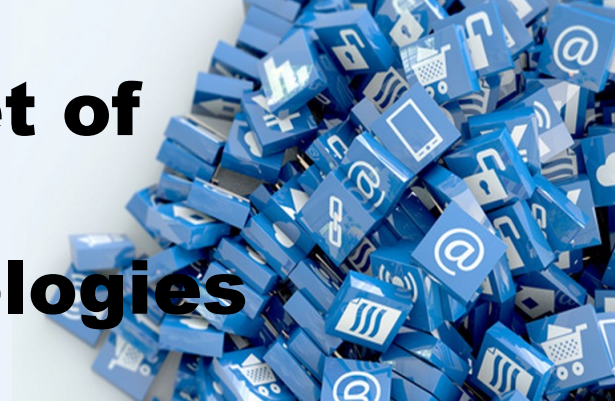




Internet of Things Technologies

B10 "PaySound"

Payment speaker/ pay voice broadcast








Features

- **LED Display:** Clearly displays transaction amounts, time, and other relevant numbers.
- **Clear Voice Broadcast:** Announces transactions audibly, ensuring customer awareness.
- **4G or Wi-Fi Connectivity:** Enables reliable and fast transaction processing.
- **Multiple Function Buttons:** Allows for easy control of volume and other functions.
- **Text-to-Speech (TTS):** Announces transactions in a clear and understandable voice.
- **Peripheral Ports:** Supports SIM card and type-C interface.
- **Large Battery Capacity:** 2000mAh, provides extended operational time on a single charge, up to 120 hours of standby time.
- **Seamless Integration:** Customize PaySound to perfectly fit your existing systems, allows for easy integration with your preferred payment gateways, banks, and platforms.



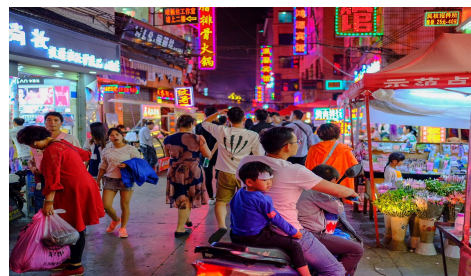
Key Benefits:

-  **Increased Efficiency**
Speeds up transactions, reducing wait times for both merchants and customers.
-  **Improved Accuracy**
Clear visual and audio confirmation minimizes errors.
-  **Enhanced Customer Experience**
Provides clear communication and confirmation of each transaction.
-  **Reliable Operation**
4G or Wi-Fi connectivity ensures consistent performance.
-  **Cost-Effective**
Reduces labor costs associated with manual transaction processing.

Configuration

Item / Model	B10
CPU	32-bit High-Performance CPU
Storage	16MB RAM, 8MB FLASH
Buttons	Volume Up (+), Volume Down (-), Power Button
Interface	1 x Type-C port
Audio Playback	Supports wav, mp3, amr audio formats
Voice Broadcast	Supports TTS, supports pre-recorded voice
ID Module	Supports local version and network version
Cellular	4G CAT1, LTE-TDD: B34/B38/B39/B40/B41 LTE-FDD: B1/B3/B5/B8
Wi-Fi	Optional
Camera	Optional
SIM Card Slot	Supports eSIM Card
Speaker	1 x Speaker (4Ω/3W)
Battery	DC3.7V / 2000mAh, 1200mAh (optional)
Power Supply	INPUT: AC100~240V / 0.3A 50/60Hz, OUTPUT: DC5.0V / 2.0A Power Adapter
Operating Environment	Temperature: 0~50°C, Relative Humidity: 5%~95% (non-condensing)
Storage Environment	Temperature: -20~60°C, Relative Humidity: 5%~95% (non-condensing)
Dimensions	154.9mm(L) x 104mm(W) x 31mm(H)

Application Scenarios



Convenience stores | Night markets | Vegetable markets | Restaurants