

# Catchy Song

(Use with Kids Book 2)

Dillon Francis

A musical staff with a treble clef and a 4/4 time signature. It contains rhythmic notation consisting of quarter notes with stems pointing up, grouped in four-measure segments.

A musical staff with a treble clef containing a melody of quarter notes, starting on a middle C and moving up stepwise.

A musical staff with a treble clef containing a melody of quarter notes, starting on a middle C and moving up stepwise.

A musical staff with a treble clef containing rhythmic notation represented by 'x' marks on a five-line staff, corresponding to the quarter notes in the melody above.

A musical staff with a treble clef containing complex rhythmic notation, including eighth notes and quarter notes with stems pointing up.

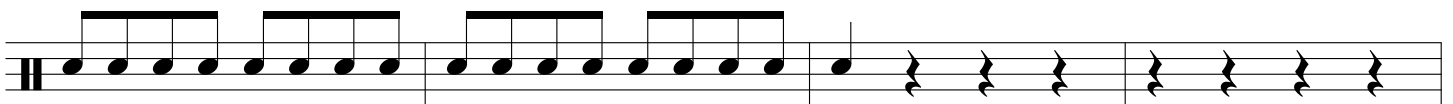
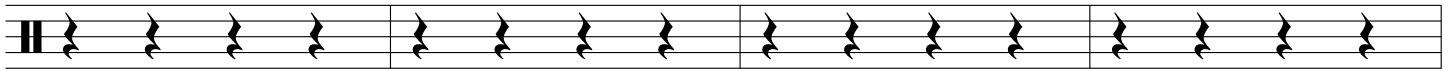
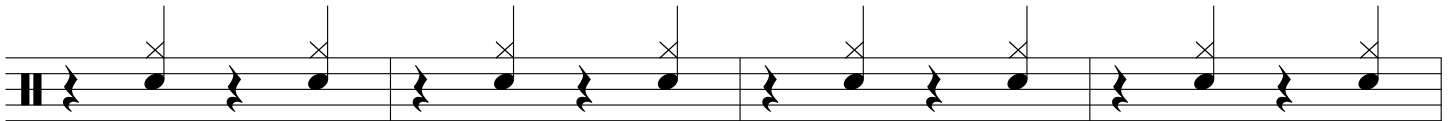
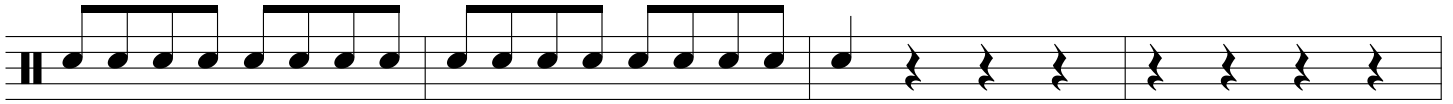
A musical staff with a treble clef containing a melody of quarter notes, starting on a middle C and moving up stepwise.

A musical staff with a treble clef containing a melody of quarter notes, starting on a middle C and moving up stepwise.

A musical staff with a treble clef containing a melody of quarter notes, starting on a middle C and moving up stepwise.

A musical staff with a treble clef containing rhythmic notation represented by 'x' marks on a five-line staff, corresponding to the quarter notes in the melody above.

Catchy Song (Use with Kids Book 2)



\*Play 3x Total

