

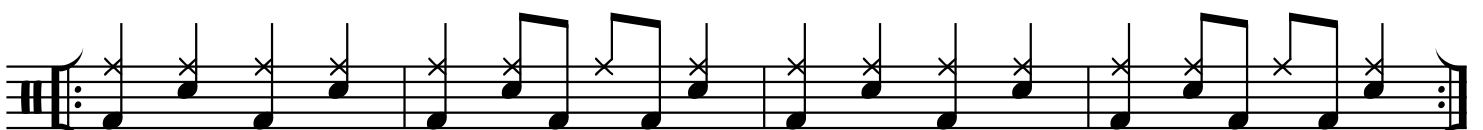
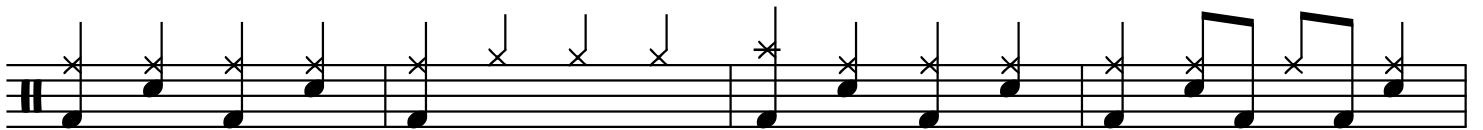
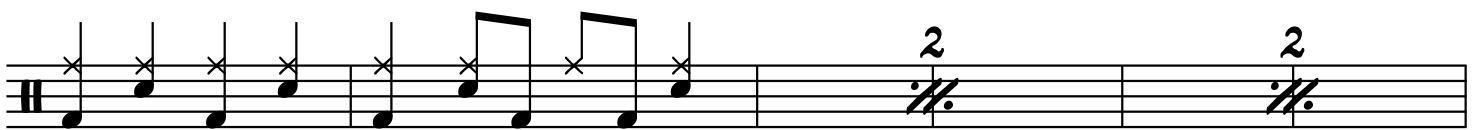
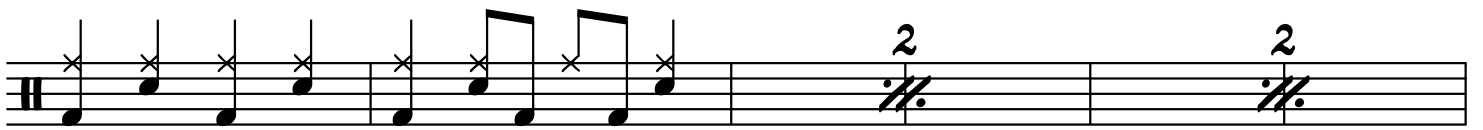
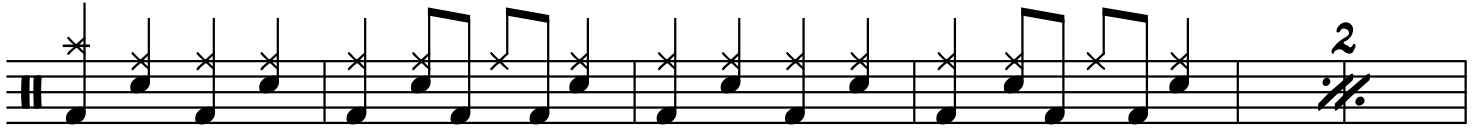
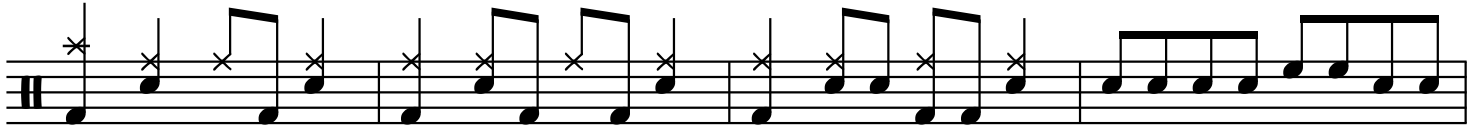
I'M A BELIEVER

SMASH MOUTH

(LEVEL 1)

Drum notation for the song "I'm a Believer" (Level 1). The score is written on ten staves, each representing a measure of music. The notation includes various drum symbols: a vertical line for the snare drum, a vertical line with an 'x' for the hi-hat, and a vertical line with a diagonal slash for the bass drum. The time signature is 4/4. The first staff begins with a 7/4 time signature change. Above the first staff is a large number '2'. Above the second staff is a '2' with a double bar line. Above the third staff is a '2' with a double bar line. Above the fourth staff are two '2's with double bar lines. Above the fifth staff are '2', '3', and '4' with double bar lines. Above the sixth staff is a '2' with a double bar line. Above the seventh staff is a '2' with a double bar line. Above the eighth staff are two '2's with double bar lines. Above the ninth staff are two double bar lines. Above the tenth staff are two double bar lines.

I'M A BELIEVER (LEVEL 1)



REPEAT UNTIL FADE