

# A Mad Russian's Christmas

(Student Version)

Trans-Siberian Orchestra

The first three staves of the musical score. The first staff begins with a 3-measure rest, followed by a series of eighth notes and quarter notes. The second staff features a complex rhythmic pattern with many eighth notes and some beamed sixteenth notes. The third staff continues with similar rhythmic patterns, including some triplet markings.

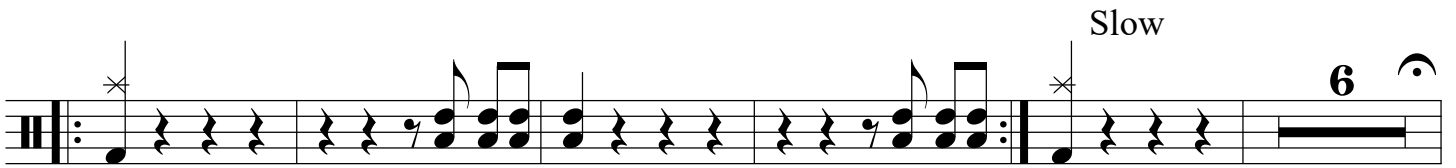
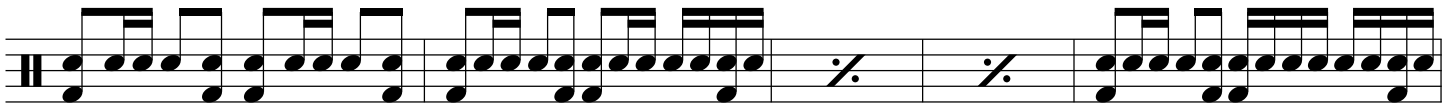
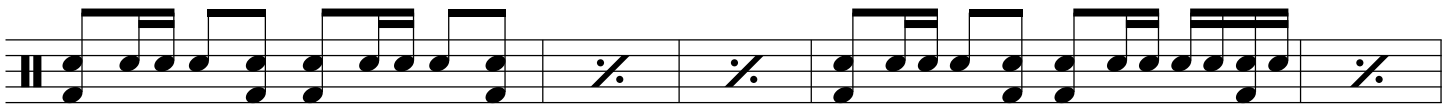
Uptempo

The Uptempo section of the score, consisting of two staves. The first staff shows a rhythmic pattern with eighth notes and quarter notes. The second staff includes a sequence of seven measures marked with a percentage sign (%), indicating a specific rhythmic exercise or pattern.

3x Total

The 3x Total section, consisting of four staves. The first two staves show a continuous rhythmic pattern of eighth notes. The third staff includes first and second endings, marked with '1.' and '2.'. The fourth staff continues the rhythmic pattern with some repeat signs.

A Mad Russian's Christmas



Uptempo

