

# Andrew Stratford



**Andrew Stratford** is a contemporary landscape painter based in North Yorkshire. His work focuses on atmosphere, weather and the emotional resonance of place, drawing on the moorlands and coastlines of northern England.

Painting in oil and acrylic, Andrew uses an expressive, process-led approach in which layers are built, disrupted and reworked. The resulting surfaces move between abstraction and representation, evoking the physical and sensory experience of landscape rather than a fixed depiction.

After a career in primary education, he now works full time as an artist and runs painting and drawing courses and workshops that encourage a more intuitive and exploratory approach to materials and mark-making. His work has been exhibited in galleries and selected exhibitions across the UK, and is held in private collections, reflecting a growing recognition of his distinctive atmospheric approach.

“My paintings explore the shifting atmosphere of the northern landscape – not as a fixed view, but as something felt, remembered and constantly changing.

Working between observation and abstraction, I build each piece through layered paint, allowing marks to be obscured, revealed and reworked. This process mirrors the instability of weather itself – moments of clarity emerging from turbulence, light breaking through dense, unsettled space.

I’m not interested in describing a place precisely. Instead, I’m trying to hold onto something more fleeting: the weight of air before rain, the pull of wind across open ground, the sense of standing within a landscape rather than looking at it.

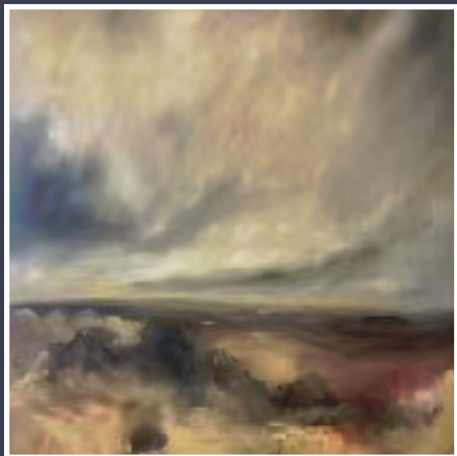
These paintings sit within an ongoing body of work I think of as Weather Systems – where land, sky and memory collapse into one shifting, atmospheric field.”



1



2



3



4



5

1. *Too Long I Roam* 2026 oil on canvas 80cm x 80cm
2. *Tinged With pink* 2024 acrylic on canvas 60cm x 60cm
3. *Let Me In Your Window* 2026 oil on canvas 80cm x 80cm
4. *Harvest Sky* 2025 oil on canvas 60cm x 60cm
5. *Druridge Dunes #5* 2025 acrylic on board 16.5cm x 30cm



*A Quiet Moment*  
oil on canvas  
60cm x 60cm



*Breaking Through*  
oil on canvas  
100cm x 100cm



*Still Water 2025* oil on canvas 30cm x 80cm



*East Farm Stream 2025*  
oil on canvas 40cm x 40cm



*Woods at Lindley Bridge 2024*  
oil on wooden panel 41cm x 41cm



*The Rise and Fall of Heavy Industry 2024* acrylic on canvas 77cm x 103cm

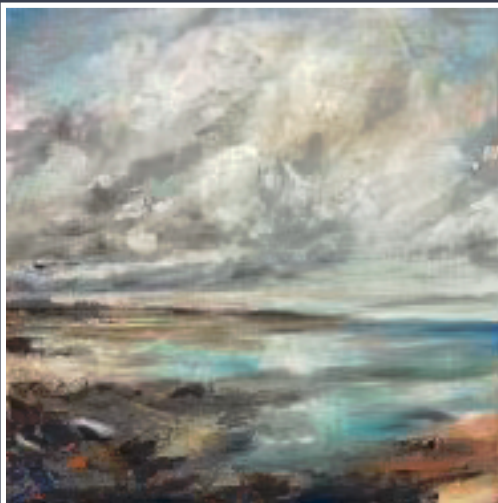


*Take Your Shoes off 2025*  
oil on canvas  
60cm x 60cm

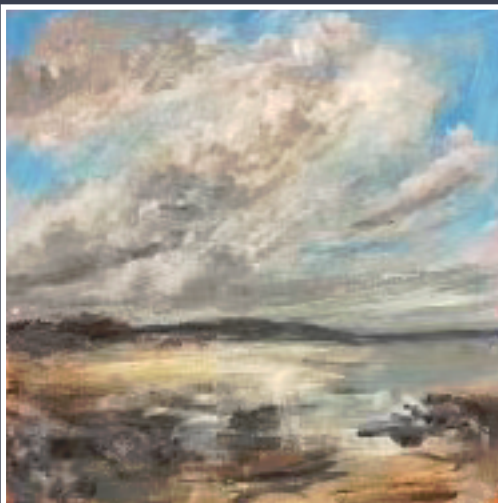


*Roll and Fall 2026*  
oil on canvas  
80cm x 80cm

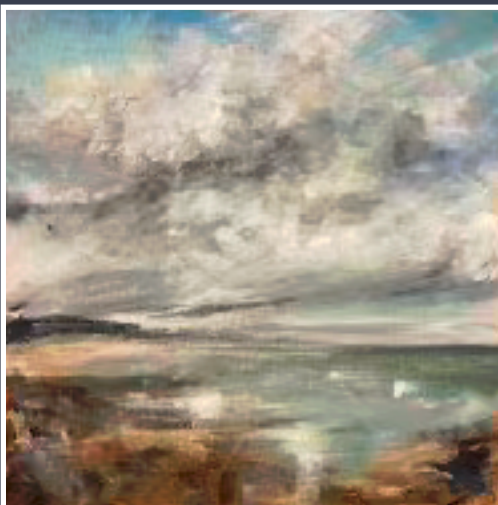
*Holding Pattern I: Incoming Front 2026*  
acrylic on canvas board  
30.5cm x 30.5cm



*Holding Pattern II: Luminous Interval 2026*  
acrylic on canvas board  
30.5cm x 30.5cm



*Holding Pattern III: Residual Heat 2026*  
acrylic on canvas board  
30.5cm x 30.5cm





**Andrew Stratford**  
**stratfordart.co.uk**  
**07961935632**

*Cover:*  
*Spring Tide 2025*  
Oil on canvas  
60cm x 60cm

