

HAWAII HOLIDAYS

Make Your Personalizes & Tailored Travel Experience



*Explore in
New Ways*

The Travel package combination is the flexibility it offers to customize your trip. Instead of being locked into a predetermined itinerary, you can choose the components that best suit your preferences, allowing for a more personalized and tailored travel experience.





*SHARING ALOHA AND THE SPIRIT OF HAWAII
MAKE EVERY MOMENT OF YOUR TRIP SPECIAL – ON THE GROUND OR IN THE AIR*



Premium Class

Starting from HK\$28,260

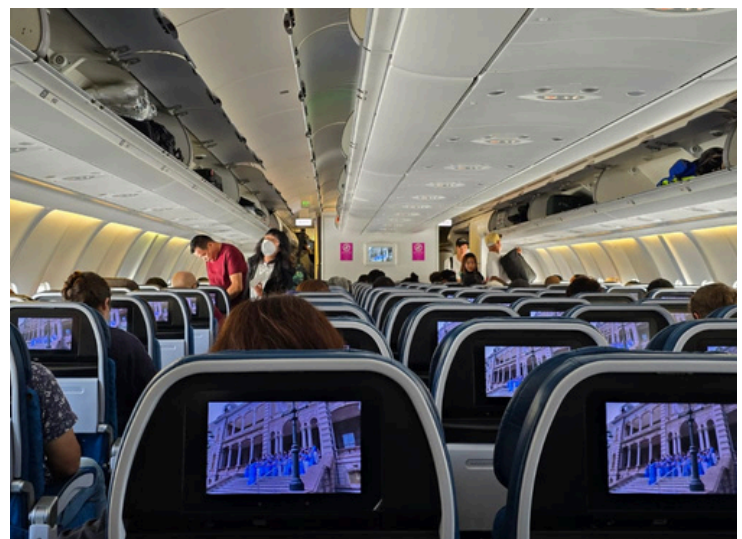
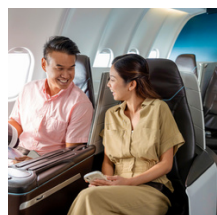
Hawaiian Airlines' Premium Cabin,
you'll enjoy our highest level of comfort
and ready to enjoy your time in Hawaii



Main Cabin

Starting from HK\$2,760

The lowest priced seat on transpacific
flights and you'll still enjoy our
authentic Hawaiian hospitality



Hong Kong to Honolulu



Business Class

Starting from
HK\$33,250

Economy Class

Starting from
HK\$6,180

*ANA Hawaii Flying Honu twice a
day between Narita and Honolulu*



Business Class

Starting from
HK\$35,700

Economy Class

Starting from
HK\$5,400

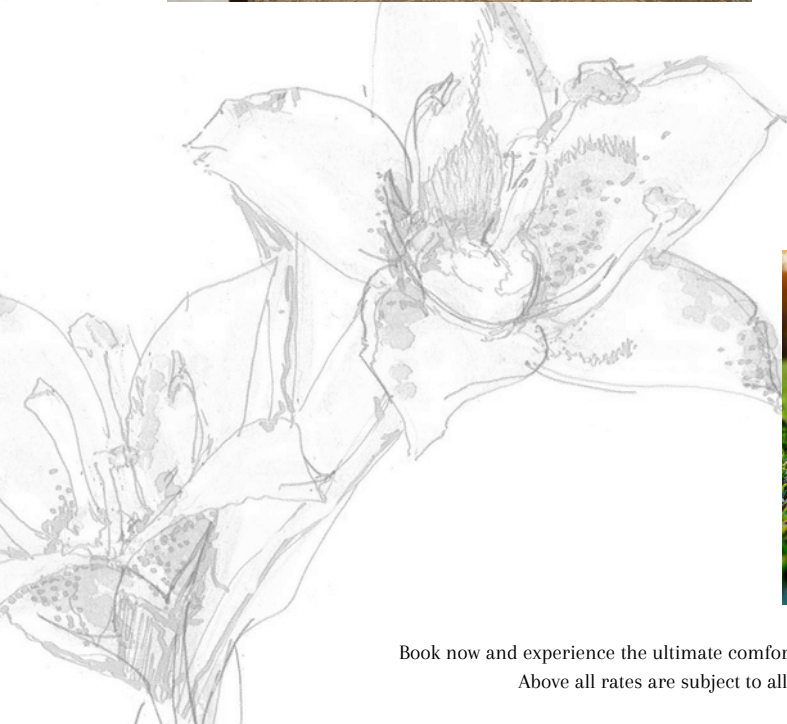
*Koreanair daily service
between Incheon and Honolulu*





PRINCE WAIKIKI

Discover the epitome of modern luxury at Prince Waikiki, located in the heart of Honolulu. This exquisite hotel offers a seamless blend of contemporary elegance and Hawaiian hospitality, boasting breathtaking ocean views, world-class dining, and unrivalled service. Experience the essence of paradise at Prince Waikiki.



Hawaii Prince Golf Club

With over 270 acres of land, Hawaii Prince Golf Club offers pristine play and views of the rain-carved Waianae Mountains. Our three interchangeable nine-hole courses ensure the ultimate playing experience for any level.

Stop by our newly renovated Bird of Paradise restaurant to recharge and replenish after a round of golf.

Prince Waikiki guests enjoy special rates and free transportation to the Golf Club.



Book now and experience the ultimate comfort and relaxation during your stay in Waikiki.
Above all rates are subject to all taxes and daily resort charges



Compact
Nissan Versa or similar

HK\$5,000



5+2 Days Free



Midsize Elite Luxury SUV
Audi Q7, Volvo XC90 or similar

HK\$9,780

TRAVELS IN HONOLULU

Alamo Rent-A-Car offers the perfect solution for your transportation needs. With their wide selection of vehicles, you can choose the ideal car to fit your preferences and budget.



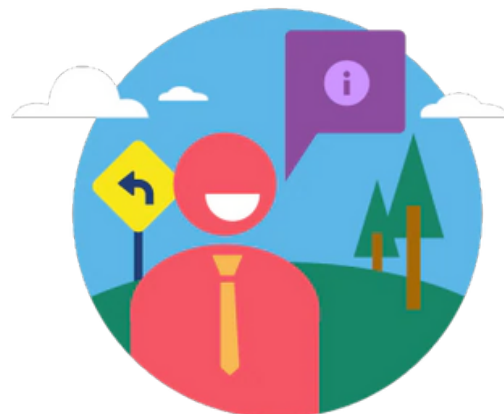
Honolulu International Airport (HNL)
300 Rodgers Blvd, Honolulu HI968819
+1 844-913-0746
Office Hours: 05:00am to 11:00pm



You Click. We Pick

Vehicle determined upon
pick-up (Compact or
Larger) or similar

HK\$5,600



Kapolei Disney Aulani Resort
92-1185 Aliinui Dr, Kapolei, HI96707
+1 808-676-5924
Office Hours: 08:00am to 01:00pm

LOCAL TOUR

PEARL HARBOR & CITY TOUR

USD60(adult) USD55 (Child)

Visit Pearl Harbor, the only military port in the United States open to the public. The tour includes a 1.5-hour stop with a brief introduction by the tour guide. After arrival, watch a documentary about the Pearl Harbor incident and visit the USS Arizona Memorial. The tour also includes a city tour passing by the Hawaii State Government Building and Chinatown and visiting the King's Palace for photo opportunities. The entire journey takes about 3 to 3.5 hours.

Note: Price does not include a tip of US\$6 per person.

Custom hotel needs to be convenient for pick-up and drop-off in the Waikiki area



MINI CIRCLE ISLAND TOUR

USD60(adult) USD55 (Child)

To explore the east of Oahu, take a bus that travels past the iconic Waikiki Beach and Diamond Head. The itinerary includes a stop at Beach Park Look Out for 10 minutes, a drive through the luxurious Kahala residential area, and a visit to the Blowhole with a 10-minute stop for photos. The bus will also pass by the white sand beach and the Native Hawaiian Reserve without stopping. The trip's highlight is a 15-minute stop at Pali Lookout, a historic battlefield marking the end of the last battle of the Hawaiian Dynasty. The entire journey lasts approximately 3 to 3.5 hours

Note: Price does not include a tip of US\$6 per person.

Custom hotel needs to be convenient for pick-up and drop-off in the Waikiki area

POLYNESIAN CULTURAL CENTER

(Include Dinner & Show-Gateway Buffet)

USD175adult) USD165 (Child)

The world-famous Polynesian Cultural Village, the largest in the world, covering an area of 42 acres, is approximately a 1.5-hour drive away. At the village, you can visit the traditional villages of different ethnic tribes, learn their dances and languages, and witness artistic performances showcasing Polynesian ethnic culture. After enjoying a buffet dinner, head to the Pacific Theater in the park to experience the stunning and large-scale Polynesian cultural performance "HA: Breath of Life," featuring 150 performers, advanced technology, and spectacular stage effects that will captivate the senses and souls of all audience members. The entire journey lasts about 8 hours.

Notes: The park is closed on Wednesdays and Sundays. The price does not include a tip of \$10 per person. The hotel must be convenient for pick-up and drop-off in the Waikiki area.



LOCAL TOUR

NORTH SHORE SIGHTSEEING TOUR

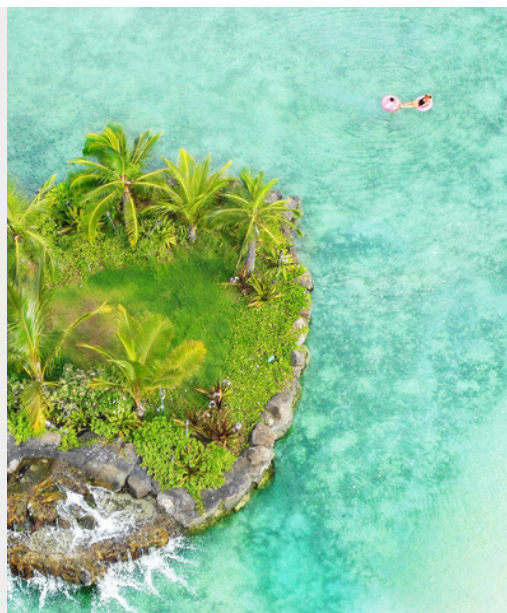
(Not Include meal)

USD120

During the trip, you can visit the Zhang Xueliang Cemetery, stop at the Japanese Temple for approximately 15 minutes, and visit Straw Hat Island for about 10 minutes to take photos. Along the way, you can purchase the Hawaiian-style speciality meal North Shore Shrimp Rice at your own expense. You will also pass by Sunset Beach, where you might glimpse Hawaii's beloved sea turtles basking in the sun. The tour continues to the surfing town of Haleiwa, known for its popularity among surfers worldwide. You will then visit the Dole Plantation Pineapple Garden, a renowned tourist attraction in Hawaii, for about 25 minutes to explore and, if interested, to purchase the speciality pineapple ice at your own expense.

Note: Price does not include a tip of US\$6 per person.

Custom hotel needs to be convenient for pick-up and drop-off in the Waikiki area



STAR OF HONOLULU DINNER CRUISE

Pacific Buffet: USD145 Adult USD105 Child

One Star Steak & Crab Leg: USD170 Adult USD120 Child

Three Star Steak & Lobster: USD215 Adult USD145 Child

In the evening, after 4 p.m., we'll leave the hotel and be picked up by a private car to go to the pier for a romantic activity in Hawaii known as Sunset Love on the Star of Honolulu. Experience the joy of a sunset cruise at sea and admire the unique beauty of Hawaii at sunset from the ship. You can also savour a Hawaiian-style dinner. After an enchanting and delightful time, we'll head back to the hotel to rest and end the day, ideally. It will be about 2 hours on board.

Note: Friday fireworks boat requires an additional \$20 per person

The price does not include a tip of USD3 per person one way.

Custom-booked hotels must be convenient for pick-up and drop-off in the Waikiki area.

DOLPHIN & YOU

(Lunch Bento included)

USD215(adult) USD165 (Child)

You will want to take advantage of the chance to swim with dolphins when you visit Hawaii! One popular spot to do this is in Oahu, Hawaii. The itinerary for the day includes about an hour of swimming with dolphins in the water. You'll also enjoy a simple Bento lunch to refuel, which you can take on the boat. Additionally, there's the opportunity to have fun on the giant inflatable slide and take memorable photos on the ship.

Notes: A full itinerary is provided in English only, and no Chinese service is available. The price does not include a tip of USD4 per person. Transportation from the designated hotel will be provided to pick up the bus. Remember to bring/wear your swimsuit to enter the water.

