



Michelle Lander Feinberg | Selected Works

Vibrant abstractions inspired by resilience, growth, and the joy of color

www.micheidistudio.com | michelle@micheidistudio.com



Biography

Michelle Lander Feinberg (b.1970) is a contemporary artist in Norwood, Massachusetts. A signature member of the National Association of Women Artists, she is also an active member of the New England Art Center and TAG The Art Gallery in SoWa, Boston's Art + Design District. Her paintings are featured in hospitals, galleries, private collections, libraries, and corporate spaces. Recently, Michelle's painting was added to the permanent collection of Boston Children's Hospital, her work received an Honorable Mention from NAWA for its 2025 Winter Small Works Exhibition, and she was featured by Arts to Hearts Project in their *Women Artists on the Rise* book. Beyond her work as an artist, Michelle is the author of the *Cooper the Dog* children's book series, a retired attorney, and the mother of five children and her beloved rescue dog, Cooper.

Artist Statement

Painting began as a way to make sense of personal grief, a process of release rather than outcome. Over time, it evolved into an exploration of resilience, joy, and the complexity of human emotion. My work moves between lyrical abstraction and structured forms, each approach reflecting a different emotional state. Circles appear often, symbolizing renewal and the cycles of challenge and growth. Bold colors and playful compositions capture lightness and joy. Structured shapes and layered textures offer focus and calm. My paintings often reflect on emotional resilience and the beauty of imperfection. I aim to create work that resonates with viewers on a personal level: work that offers hope, invites curiosity, and honors both the messy and beautiful parts of being human.

Circle Series: Renewal & Resilience

*Circles symbolize the possibility of beginning again:
reflecting growth, curiosity, and transformation.*

Journey to Self

36" x 36" / Acrylic on canvas

A visual meditation on growth, reflection, and resilience: charting a personal path back to center.

*Currently on Exhibit at Mosesian Center for the Arts,
Watertown, MA*



That Hits the Spot

30" x 30" / Acrylic on canvas

Vibrant colors and layered circles create a playful tension between chaos and calm.



That Also Hits the Spot

30" x 30" / Acrylic on canvas

A reminder that joy can rise
from disorder.



Outside Another Box

36" x 36" / Acrylic on canvas

An invitation to push beyond imposed limits and embrace unexpected possibilities.



Grow

30"x 30" / Acrylic on canvas

Growth comes through
challenge: a bold reflection on
learning through mistakes and
finding strength in adversity.



Just a Bit Shy

30" x 30" / Acrylic on canvas

A playful exploration of hesitation and the role of intentionality in both art and life.



This Side Up

*10" x 10" / Mixed media on
cradled wood with epoxy resin
finish*

A commentary on distorted
truths: asking how we find clarity
in a world that often feels upside
down.

*Currently on Exhibit at MVA Gallery, Bethesda,
MD*



Jumping Through Hoops

30" x 30" / Acrylic on canvas

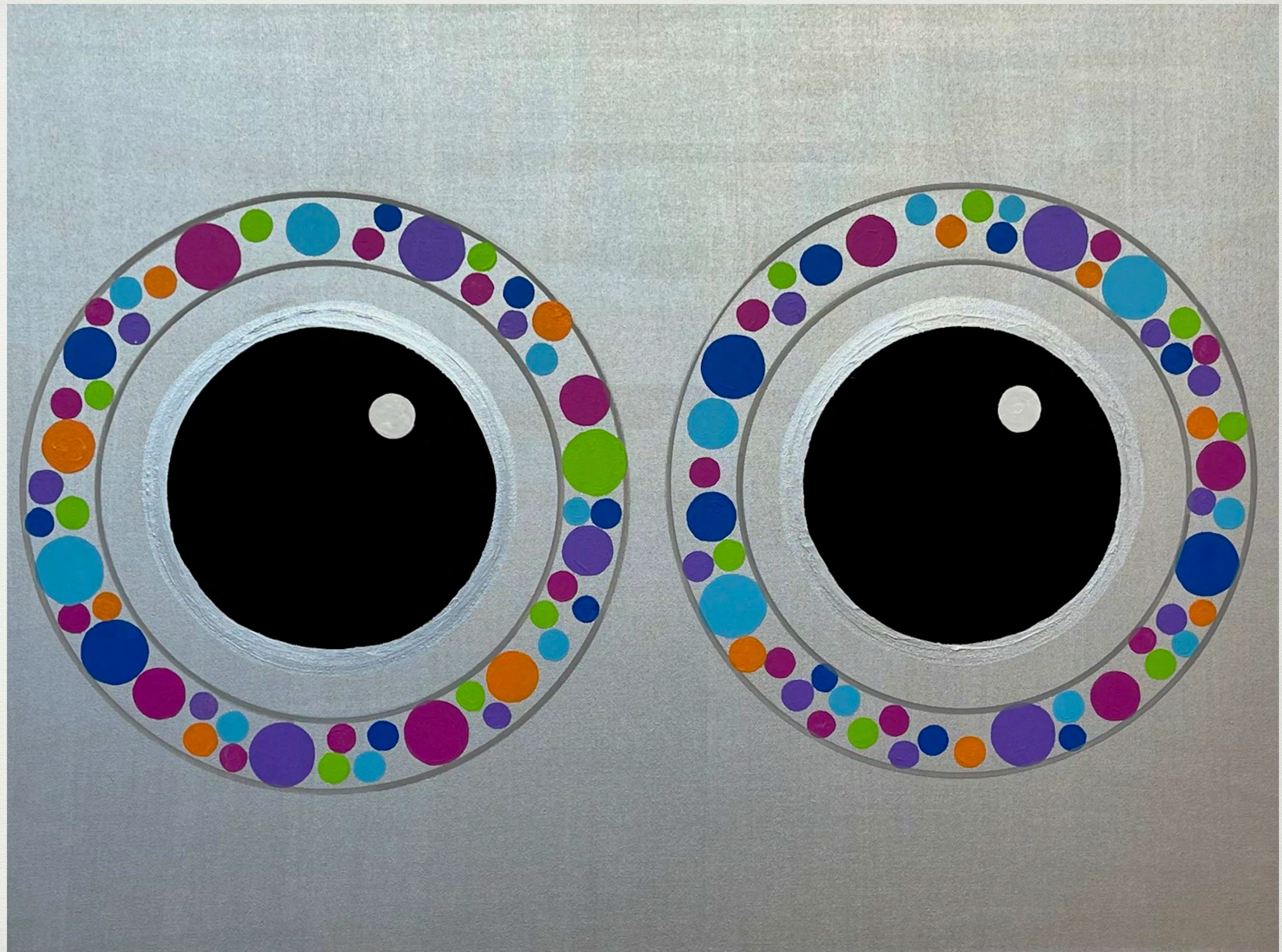
An energetic take on life's challenges and the hoops we navigate in the pursuit of growth and understanding.



Mesmerizing

*30" x 40" / Gouache &
acrylic on canvas*

An invitation to remain
open to wonder, to be
dazzled by the
unexpected in art and
life.



Balance

10" x 10" / Acrylic on cradled wood

Inspired by the Japanese concept of wabi-sabi, finding meditation and harmony in imperfection.

.



Gum Balls

30" x 30" / Acrylic on canvas

A joyful exploration of color,
form, and playful energy.



Gum Balls Two

30" x 30" / Acrylic on gallery-wrapped canvas

A playful nod to curiosity and the hidden layers waiting beneath the surface of everyday moments.

*Currently on Exhibit at Mass General Cancer Center,
Boston, MA*



Curve Series: Embracing the Unexpected

Curves echo life's nonlinear paths, reminding us that twists, turns, and detours often shape our most meaningful experiences. This series explores how bending away from certainty can bring unexpected joy, discovery, and resilience.

Flower Fields

40" x 30" / Acrylic on canvas

A landscape that invites viewers to find expansiveness and intimacy within layered fields of color.

*Currently on Exhibit at AnnMarie Sculpture Garden
& Arts Center, Solomons, MD*

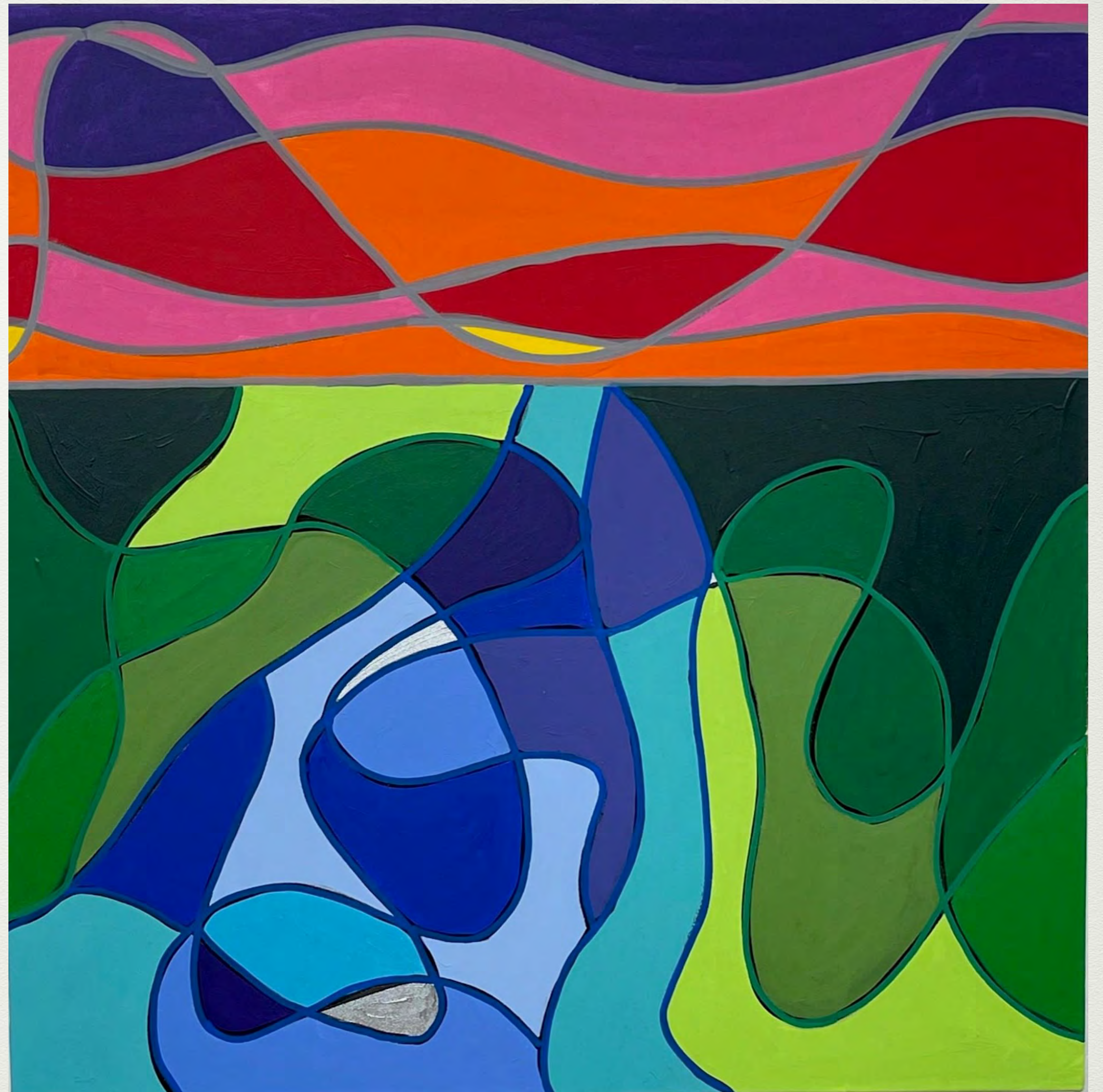


New Day

30" x 30" x 2.5" / Acrylic on canvas

A reflection on the promise of tomorrow: how even the hardest days give way to calm and renewal.

*Now Part of the Permanent Collection at
Boston Children's Hospital, Boston, MA*



Upstream Dream

30" x 30" / Acrylic on canvas

A visual escape into quiet moments
of respite amid life's daily chaos.

Currently *on Exhibit at Mass General Cancer Center,
Boston, MA*



Preppy

30" x 30" / Acrylic on canvas

A playful, nostalgic nod to simpler times and classic color pairings.



She's Falling Apart

30" x 30" x 2.5" / Acrylic on canvas

A bold statement on the power of transformation: how breaking down often becomes the first step toward becoming whole.



In the Wind

36" x 36" / Acrylic on canvas

An exploration of movement and stillness
— capturing both energy and calm in a
single composition.

*Currently on Exhibit at Mass General Cancer Center,
Boston, MA*



Twisted

36" x 36" / Acrylic canvas

A reminder that every meaningful journey takes unexpected turns, embracing the beauty of the nonlinear path.

*Currently on Exhibit at Mass
General Cancer Center,
Boston, MA*



Delirious

30" x 40" / Acrylic on canvas

A vibrant expression of joy, exhaustion, and the blurred lines between the two.



Selected Exhibitions

GBH Community Canvas,
Boston



Clio Art Fair NYC 2024





Visiting Artist Exhibit at JP Licks, Wellesley

Boston Public Library Jamaica Plain Branch



Lasell University, Wedeman Gallery

