



## Michelle Lander Feinberg | Selected Works

*Vibrant abstractions inspired by resilience, growth, and the joy of color*

[www.micheidistudio.com](http://www.micheidistudio.com) | [michelle@micheidistudio.com](mailto:michelle@micheidistudio.com)



## Biography

Michelle Lander Feinberg (b.1970) is a contemporary artist in Norwood, Massachusetts. A signature member of the National Association of Women Artists, she is also an active member of the New England Art Center and TAG The Art Gallery in SoWa, Boston's Art + Design District. Her paintings are featured in hospitals, galleries, private collections, libraries, and corporate spaces. Recently, Michelle's painting was added to the permanent collection of Boston Children's Hospital, her work received an Honorable Mention from NAWA for its 2025 Winter Small Works Exhibition, and she was featured by Arts to Hearts Project in their *Women Artists on the Rise* book. Beyond her work as an artist, Michelle is the author of the *Cooper the Dog* children's book series, a retired attorney, and the mother of five children and her beloved rescue dog, Cooper.

## Artist Statement

Painting began as a way to make sense of personal grief, a process of release rather than outcome. Over time, it evolved into an exploration of resilience, joy, and the complexity of human emotion. My work moves between lyrical abstraction and structured forms, each approach reflecting a different emotional state. Circles appear often, symbolizing renewal and the cycles of challenge and growth. Bold colors and playful compositions capture lightness and joy. Structured shapes and layered textures offer focus and calm. My paintings often reflect on emotional resilience and the beauty of imperfection. I create work that resonates with viewers on a personal level: work that offers hope, invites curiosity, and honors both the messy and beautiful parts of being human.

## Circle Series: Renewal & Resilience

*Circles symbolize the possibility of beginning again:  
reflecting growth, curiosity, and transformation.*



*Jumping Through Hoops*, 30" x 30" | Acrylic on canvas

An energetic take on life's challenges and the hoops we navigate in the pursuit of growth and understanding.

## Gum Balls Two

*30" x 30" / Acrylic on gallery-wrapped canvas*

A playful nod to curiosity and the hidden layers waiting beneath the surface of everyday moments.

*Currently on Loan at Mass General Cancer Center,  
Boston, MA*



## Journey to Self

*36" x 36" / Acrylic on canvas*

A visual meditation on growth, reflection, and resilience: charting a personal path back to center.



## Just a Bit Shy Too

*30" x 30" / Acrylic on canvas*

A playful exploration of  
hesitation and the role of  
intentionality in both art and life.



## Iterations

*30" x 30" / Acrylic on canvas*

A reminder that we move through life in expanding layers, reinventing and improving ourselves with every turn.



# That Hits the Spot

*30" x 30" / Acrylic on canvas*

A playful tension between chaos  
and calm.



## Curve Series: Embracing the Unexpected

*Curves echo life's nonlinear paths, reminding us that twists, turns, and detours often shape our most meaningful experiences. This series explores how bending away from certainty can bring unexpected joy, discovery, and resilience.*



*Twisted, 36" x 36" | Acrylic on canvas*

*A reminder that every meaningful journey takes unexpected turns, embracing the beauty of the nonlinear path.*

*Currently on Loan at Mass General Cancer Center, Boston, MA*

## Upstream Dream

*30" x 30" / Acrylic on canvas*

A visual escape into quiet moments  
of respite amid life's daily chaos.

Currently *on Exhibit at Mass General Cancer Center,  
Boston, MA*



## She's Falling Apart

*30" x 30" x 2.5" / Acrylic on canvas*

A statement on the power of transformation: how breaking down often becomes the first step toward becoming whole.



## In the Wind

*36" x 36" / Acrylic on canvas*

An exploration of movement and stillness  
at one time.

*Currently on Loan at Mass General Cancer Center,  
Boston, MA*



## Flower Fields

*40" x 30" / Acrylic on canvas*

A landscape that invites viewers to find expansiveness and intimacy within layered fields of color.

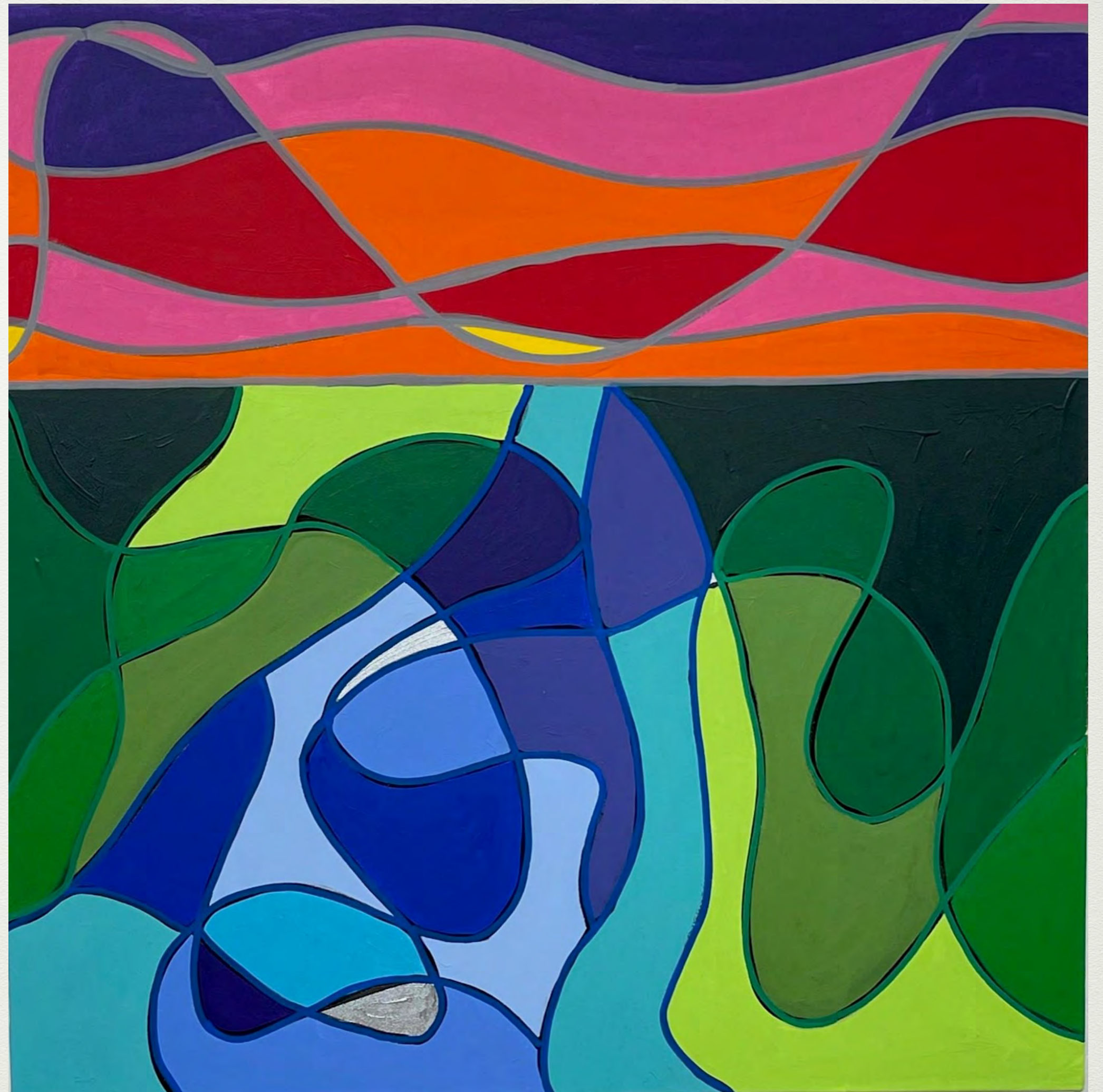


## New Day

*30" x 30" x 2.5" / Acrylic on canvas*

A reflection on the promise of tomorrow: how even the hardest days give way to calm and renewal.

*Now Part of the Permanent Collection at  
Boston Children's Hospital, Boston, MA*



# Selected Exhibitions



Mass General Cancer Center

GBH Community Canvas,  
Boston



Clio Art Fair NYC 2024



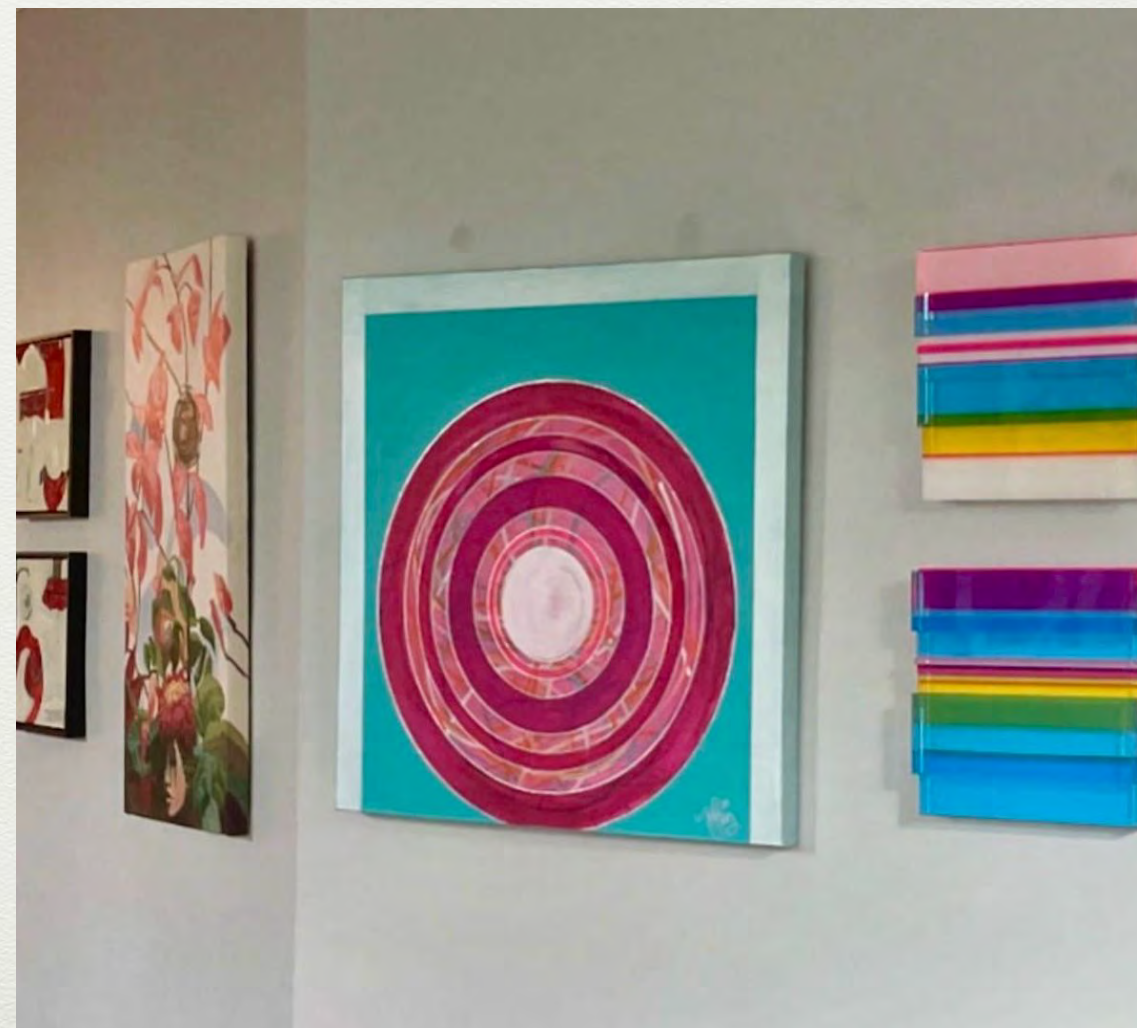


Visiting Artist Exhibit at JP Licks, Wellesley

Boston Public Library Jamaica Plain Branch



Lasell University, Wedeman Gallery





[michelle@micheidistudio.com](mailto:michelle@micheidistudio.com)