

Solitaire YB-Series Interactive Flat Panel for Education & Business

Powered by AI

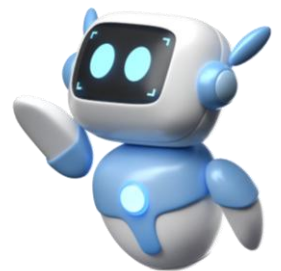


Education

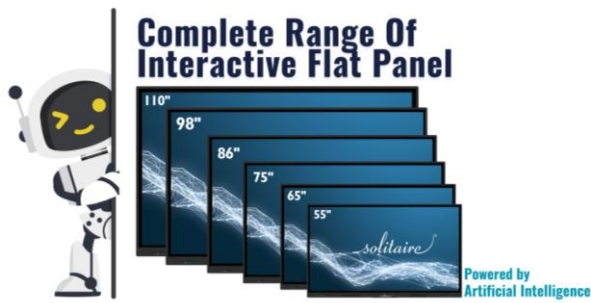
Business

Designed to Inspire, Built to Empower.

**The Perfect Companion for
Modern Classrooms & Dynamic Meeting Rooms**



- 4K UHD (3840 × 2160) @ 60Hz
- 3.2/4.0 mm Toughened Glass
- Advanced IR technology
- Upto 60 touch points
- Brightness: 450 cd / m²
- Static Contrast: upto 5000:1
- Response Time: Continuity < 2 ms
- BYOD Enabled Wireless Casting
- Upto 60,000 hrs panel life
- +/-1 mm touch accuracy
- Android 14
- 8GB RAM, 64GB/128GB ROM
- Octa-Core ARM Cortex-A55
- Mali-G52 MP2
- Powerful Speakers
- Content Sharing using QR Code
- Advanced Interactive Software
- Customised OPS options loaded with Digital Canvas IWB Software Suite
- FREE Wall Mount Kit, Floor Mount (Optional)



A Complete Range of Interactive Displays

SOLITAIRE Interactive Flat Panel aids teaching and learning. We provide reliable, high quality yet affordable Interactive Flat Panel Display (IFPD) systems with precise interactive experience, which are ideal for use in classrooms, training rooms, learning centres, and meeting rooms. We offer interactive tools to help teachers engage and inspire their students/learners.

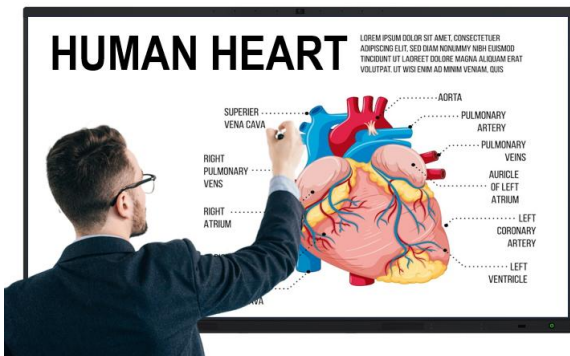
Super Accurate Touch Experience:

SOLITAIRE Interactive Flat Panels are powered by **Zero Bonding Technology**, supports upto 60 simultaneous multi-touch points. At every channel, you can write, annotate, and take screenshots, creating a precise and fluid writing experience. It also supports Multi-touch gesture control, annotation with multiple pens and colors, gestures to erase, zoom in/out, drag and many more



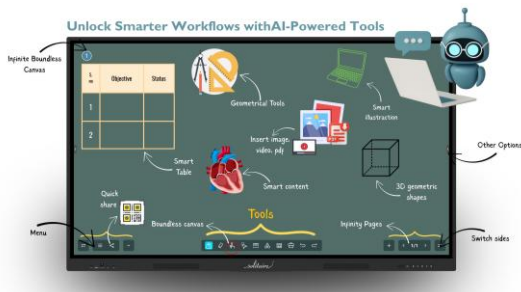
Engage Students Like Never Before :

When students learn or are taught using SOLITAIRE IFPD, our products ensure that the amount of attention, curiosity, enthusiasm, optimism, and passion they show extends to their motivation to learn and succeed in their education. Simple Design, 4K Resolution, Intuitive Interactive software , Full K12 content support (Optional), Teachers can improve learning outcomes using responsive touch, rich yet simple to use interactive software.



Multiply your meeting room productivity

Start Meetings Instantly - More Engaging Presentations - Efficient Information Flow - Increased Collaboration In Meetings - Connect Your Personal Devices - An incredible combination of Touchscreen interactivity and Visual Collaboration.



Stunning Display Quality

SOLITAIRE Interactive panels produces Amazing Visual experience with bright, sharp image & video quality with Ultra HD 4K display resolution & super high contract. Crystal clear display, incredible details, and beautiful pictures combine to provide a true visual feast.

Connecting Mobile Devices

SOLITAIRE Interactive Flat Panel software develops a Wi-Fi-based system for enabling mobile terminal and IFP interaction. You can use the system to link the IFP to a mobile terminal, take a photo and exhibit it on the IFP, control the IFP from the mobile terminal, post comments, present courseware, send files & many more.



Powerful And Crisp Sound

SOLITAIRE Interactive Panel uses a unique cavity acoustic structure, the sound is powerful (20Wx2 or 25Wx2 + 20W or 25W sub-woofer, optional), rich, wide, and sensitive, allowing all participants to experience amazing clarity as well as loud audio output.



Proudly Manufactured in India

Inspired by the vision of the Government of India, team SOLITAIRE has commenced manufacturing SOLITAIRE Interactive Panels in India (SKD production) with the ambitious goal of exporting them worldwide.

Digital Canvas Pro

Step into the future with Digital Canvas Pro, a revolutionary Generative AI-powered interactive whiteboard suite that will redefine education as we know it! This is not just an upgrade, it's a complete transformation of how lessons are taught, learned, and experienced. Harness the power of **AI-driven insights**, **real-time 3D simulations**, and interactive content that adapts to every teaching need, making learning more engaging, dynamic, and impactful than ever before.



AI-Driven Personalized Lesson Plans



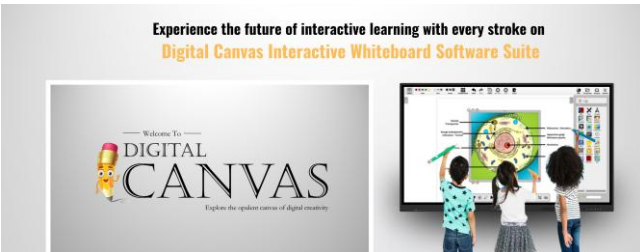
Multilingual AI Support Across Indian Languages



Immersive STEM Learning with 3D Simulations

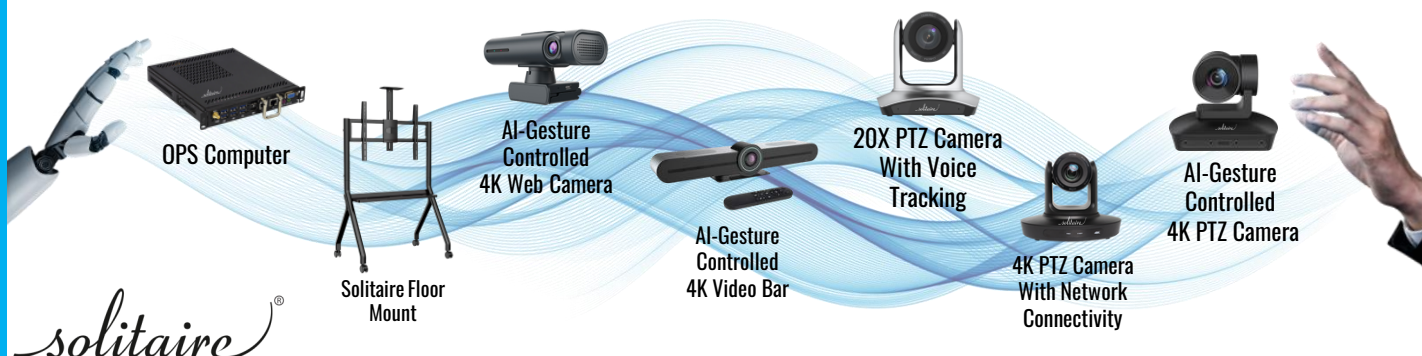


Smart Collaboration & Secure Cloud Access



DIGITAL CANVAS is an advanced interactive whiteboard software suite for education and corporate training. This software supports whiteboard functions such as writing, erasing, annotating, drawing, and gesture support on IWB/IFP. Furthermore, the flat panel's interactive multimedia functions, such as subject-specific tools and multimedia playback, enable enhanced interactive teaching and demonstration experiences.

Optional Accessories:



Specification: Solitaire YB-Series Interactive Flat Panel Displays

Model name		SLTR65i	SLTR75i
Appearance	Color	Black	
	Camera (Optional)	48MP AI camera V angle: DFOV:100 ° HFOV:91.9 ° VFOV:60 Support Autofocus, Auto white balance, Backlight compensation, 3D noise reduction	
	Mic (Optional)	8 Array, pickup distance 0~8 m, pickup angle 0°~180°	
Display Parameter	Size	65inch	75inch
	Brightness	Upto 450cd/m ²	Upto 450cd/m ²
	Resolution	3840 x 2160 - 4K UHD	3840 x 2160 - 4K UHD
	Screen ratio L:H	16:09	16:09
	Contrast ratio	5000:1	5000:1
	Backlight life	upto 60,000 hours	upto 60,000 hours
	Response time	First Point <2 ms, Continuation <8 ms	First Point <2 ms, Continuation <8 ms
	Display area	1430.5(H)×805.5(V)mm	1651.7 (H) × 929.9 (V) mm
	Viewing angle	178°	178°
	Display color	1.07B (8-bit+FRC)	1.07B (8-bit+FRC)
	Refresh rate	60Hz	60Hz
	Protective glass type	3.2/4.0 mm Anti-Glare Tempered Glass	3.2/4.0 mm Anti-Glare Tempered Glass
Glass hardness	7 Mohs / 9 Mohs	7 Mohs / 9 Mohs	
Android Specs	CPU	Octa Core (8 Core Cortex A55)	Octa Core (8 Core Cortex A55)
	GPU	1.5G Arm Mali-G52 MP2	1.5G Arm Mali-G52 MP2
	Memory	8G	8G
	Built-in storage capacity	EMMC -128G	EMMC -128G
	Operating system	Android 14	Android 14
Network	Network	Support Ethernet (Gigabit Ethernet Port) Version 802.11ac/b/g/n/a/ax; Frequency 2.4GHz/5GHz; distance 0~10m	Support Ethernet (Gigabit Ethernet Port) Version 802.11ac/b/g/n/a/ax; Frequency 2.4GHz/5GHz; distance 0~10m
	Bluetooth	Version 5.0; frequency 2.4GHz; distance 0~10m	Version 5.0; frequency 2.4GHz; distance 0~10m
I/O Interfaces	Motherboard side interface	HDMI in x2	HDMI in x2
		HDMI out x1	HDMI out x1
		VGA in x1	VGA in x1
		VGA Audio In x1	VGA Audio In x1
		USB 3.0 x1	USB 3.0 x1
		USB 2.0 x1	USB 2.0 x1
		Touch USB x1	Touch USB x1
		RJ45 x1	RJ45 x1
		RS232 x1	RS232 x1
		Headphone out*1	Headphone out*1
		YPBPR in*1	YPBPR in*1
		Coaxial out x1	Coaxial out x1
	AV in *1	AV in *1	
	AV out *1	AV out *1	
	TF card x1	TF card x1	
	Front interface	HDMI IN x1	HDMI IN x1
		USB 3.0 x2	USB 3.0 x2
		TYPE-C x1 (USB Function)	TYPE-C x1 (USB Function)
TP USB x1		TP USB x1	
IR Sensor x1		IR Sensor x1	
LP x1 (Light Sense)		LP x1 (Light Sense)	
Buttons	Screen Capture, Screen Recording, Eyeshield, Touch Lock, Screen Lock, Voice + -	Screen Capture, Screen Recording, Eyeshield, Touch Lock, Screen Lock, Voice + -	
Infrared Touch Screen	Built-in speakers	20Wx2, 20W sub woofer (optional)	20Wx2, 20W sub woofer (optional)
	Touch type	Infrared touch	Infrared touch
	Touch points	Upto 60 touch points	Upto 60 touch points
	Touch accuracy	± 1mm	± 1mm
	Touch height sensitivity	≤ 1.5mm	≤ 1.5mm
	Interpolation resolution	32767 (W) x 32767 (D)	32767 (W) x 32767 (D)
	Identifiable objects	Fingers or touch pen	Fingers or touch pen
	Temperature range	Working temperature: -10°C~60°C	Working temperature: -10°C~60°C
	Operating Voltage	DC 5V	DC 5V
	Working power consumption	1W ~ 5W	1W ~ 5W
Usage Environment	Working temperature	0°C ~ 40°C	0°C ~ 40°C
	Storage temperature	-20°C ~ 60°C	-20°C ~ 60°C
	Working humidity	40% ~ 90% RH	40% ~ 90% RH
	Storage humidity	10% ~ 90% RH	10% ~ 90% RH
	Power input	AC 100V-240V / 50-60HZ	AC 100V-240V / 50-60HZ
Power supply	Total power consumption	≤ 175 W	≤ 220 W
	Standby power	≤ 0.5 W	≤ 0.5 W
	Supported video formats: H263, H264, H265, MPEG2, MPEG4, VC1, VP6, VP8, VP9, MJPEG, AVS, AVS+, AVS2, etc.		
Basic Software Functions	Supported audio formats: MP3, MAV, AAC, AC3, EAV3, Vorbis, FLAC, APE, TrueHD, DTS, DTSHD		
	Supported image formats: JPEG, PNG, GIF, BMP		
	Support 4K UHD (QFHD/ 3840x2160)		
	System pre-installed software: basic software such as WPS, video player, etc.		
	Function characteristic	Power Operation: Supports Low Power Mode; Standby Mode Can be used as the original ecological Android system, open root permissions Support Bluetooth 5.1 module	Power Operation: Supports Low Power Mode; Standby Mode Can be used as the original ecological Android system, open root permissions Support Bluetooth 5.1 module
Package	Net weight	≤33Kg	≤ 48Kg
	Gross weight	≤42Kg	≤ 59Kg
	VESA SZIE	600*310mm	600*380mm
	Bare metal size	1481.2×904.2×105.8mm (L*H*D)	1702.8×1029×105.5mm (L*H*D)
	Package size	1610*190*1025mm(L*W*H)	1830*190*1150mm(L*W*H)
Accessories	Wall bracketx1, Touch Penx2, Power cablex1, Remote controlx1, WiFi Antennax2		
Interactive AI Software	Solitaire Digital Canvas Pro AI-powered interactive whiteboard software built for smart classrooms and meeting room collaboration - offers handwriting and shape recognition, equation tools, rich educational content, 2D/3D simulations, built-in AI assistants, real-time collaboration - With cloud and local storage, Google and Microsoft integration, multilingual support, and a clean drag-and-drop interface for content creation, delivers a fast, seamless, all-in-one digital learning & collaboration experience.		
Certification	ISO9001, ISO14001, ISO27001, ISO45001, ISO50001, BIS, CE, CB (TUV) for 55" to 75" only, FCC, RoHS, EMC, NABL Test Report, E-Waste Certificate, GMP & MII Certificate		
OPS Computer	BIS Certified Customized OPS computer with options of Core i3/ i5/ i7 CPU, customized SSD, HDD, RAM & OS available with Feature-rich DIGITAL CANVAS IWB suite (Perpetual License)		

Disclaimer: Due to product configuration and manufacturing process, actual body size/body weight may vary, please refer to the actual product. The product images in this specification are for illustrative purposes only and may be adjusted and revised in order to match the actual product performance and specifications. In the event that such changes and adjustments are necessary, no special notice will be given. The actual product effect (including but not limited to appearance, color and size) may vary slightly. Please refer to the actual product. In order to provide accurate specifications as far as possible, the text expressions and pictures in this specification may be adjusted and revised in real time.

solitaire[®]

Empowering Collaboration, Amplifying Impact

Reach Us

ADDRESS

HQ: SUPERTRON ELECTRONICS PRIVATE LIMITED

2, Cooper Lane, Mission Row Extension
Kolkata 700001, WB, India

Manufacturing Units

i-72, SITE 5, UPSIDC Industrial Area, Kasna, Greater Noida - 201310, UP

WEBSITE OF BRAND SOLITAIRE

www.solitairetech.in

E-MAIL

Solitaire.IFPD@Supertronindia.com
Solitaire.Products@Supertronindia.com

PHONE NO.

+91-120-3584790, +91-120-3645968, +91-120-4166298, +91-33-40371000

WhatsApp: +91-9818778982

TOLL FREE NO.

1800-571-6767

 @SolitaireProducts



 @SOLITAIRE IFPD &
UC Products



 @Solitaire Products



 @solitaire_products

