

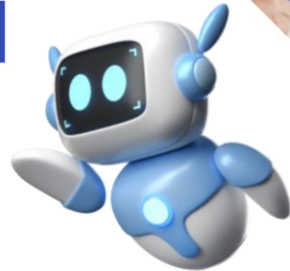


Solitaire Y-Series

Interactive Flat Panel

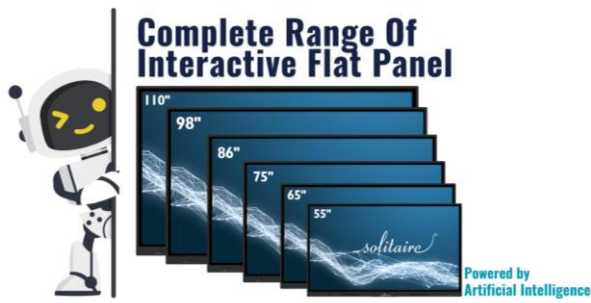
for Education & Business

Powered by AI



Key Features:

- 4K UHD (3840 × 2160) @ 60Hz
- 4mm Toughened Glass
- Advanced IR technology
- Multi-Touch touch points
- Brightness: 450 cd / m²
- Contrast Ratio: 5000:1
- True Zero Bonding Technology
- BYOD enabled Wireless Casting
- Upto 60,000 hrs panel life
- +/-1 mm touch accuracy
- Android 14
- 8GB RAM, 128GB ROM
- Octa-Core ARM Cortex-A55
- 48 MP Built-in camera & 8 Array Mic (Optional)
- 20Wx2, 20W Sub Woofer (optional)
- Content Sharing using QR Code
- Advanced Interactive Software & DMS
- Customised OPS options. loaded with Digital Canvas IWB Software Suite
- FREE Wall Mount Kit, Floor Mount (Optional)



A Complete Range of Interactive Displays

SOLITAIRE Interactive Flat Panel aids teaching and learning. We provide reliable, high quality yet affordable Interactive Flat Panel Display (IFPD) systems with precise interactive experience, which are ideal for use in classrooms, training rooms, learning centres, and meeting rooms. We offer interactive tools to help teachers engage and inspire their students/learners.

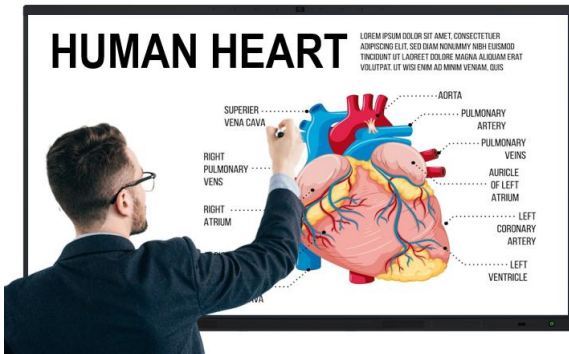
Super Accurate Touch Experience:

SOLITAIRE Interactive Flat Panels are powered by **Zero Bonding Technology**, supports up to 20 (on Android) or 40 (on Windows) simultaneous multi-touch points. At every channel, you can write, annotate, and take screenshots. creating a precise and fluid writing experience. It also supports Multi-touch gesture control, annotation with multiple pens and colors, gestures to erase, zoom in/out, drag and many more



Engage Students Like Never Before :

When students learn or are taught using SOLITAIRE IFPD, our products ensure that the amount of attention, curiosity, enthusiasm, optimism, and passion they show extends to their motivation to learn and succeed in their education. Simple Design, 4K Resolution, Intuitive Interactive software , Full K12 content support (Optional), Teachers can improve learning outcomes using responsive touch, rich yet simple to use interactive software.



Multiply your meeting room productivity

Start Meetings Instantly - More Engaging Presentations
- Efficient Information Flow - Increased Collaboration In Meetings - Connect Your Personal Devices - An incredible combination of Touchscreen interactivity and Visual Collaboration.



Stunning Display Quality

SOLITAIRE Interactive panels produces Amazing Visual experience with bright, sharp image & video quality with Ultra HD 4K display resolution & super high contract. Crystal clear display, incredible details, and beautiful pictures combine to provide a true visual feast.

Connecting Mobile Devices

SOLITAIRE Interactive Flat Panel software develops a Wi-Fi-based system for enabling mobile terminal and IFP interaction. You can use the system to link the IFP to a mobile terminal, take a photo and exhibit it on the IFP, control the IFP from the mobile terminal, post comments, present courseware, send files & many more.



Powerful And Crisp Sound

SOLITAIRE Interactive Panel uses a unique cavity acoustic structure, the sound is powerful (20Wx2 or 25Wx2 + 20W or 25W sub-woofer, optional), rich, wide, and sensitive, allowing all participants to experience amazing clarity as well as loud audio output.



Proudly Manufactured in India

Inspired by the vision of the Government of India, team SOLITAIRE has commenced manufacturing SOLITAIRE Interactive Panels in India (SKD production) with the ambitious goal of exporting them worldwide.

Digital Canvas Pro (Optional)

Step into the future with Digital Canvas Pro, a revolutionary Generative AI-powered interactive whiteboard suite that will redefine education as we know it! This is not just an upgrade, it's a complete transformation of how lessons are taught, learned, and experienced. Harness the power of **AI-driven insights**, **real-time 3D simulations**, and interactive content that adapts to every teaching need, making learning more engaging, dynamic, and impactful than ever before.



AI-Driven Personalized Lesson Plans



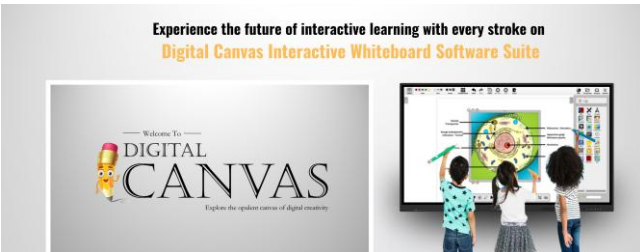
Multilingual AI Support Across Indian Languages



Immersive STEM Learning with 3D Simulations



Smart Collaboration & Secure Cloud Access



DIGITAL CANVAS is an advanced interactive whiteboard software suite for education and corporate training. This software supports whiteboard functions such as writing, erasing, annotating, drawing, and gesture support on IWB/IFP. Furthermore, the flat panel's interactive multimedia functions, such as subject-specific tools and multimedia playback, enable enhanced interactive teaching and demonstration experiences.

Optional Accessories:



OPS Computer



Solitaire Floor Mount



AI-Gesture Controlled 4K Web Camera



AI-Gesture Controlled 4K Video Bar



20X PTZ Camera With Voice Tracking



4K PTZ Camera With Network Connectivity



AI-Gesture Controlled 4K PTZ Camera



Specification: SOLITAIRE Y-Series Interactive Flat Panel Displays

Model		SLTR 65i	SLTR 75i
Display Parameter	Diagonal Size	65inch	75inch
	Effective Display Area	1430.5(H)×805.5(V)mm	1651.7 (H) x 929.9 (V) mm
	Resolution & Aspect Ratio	4K UHD, 16:9	4K UHD, 16:9
	Brightness	450 cd/m2 Typical (upto 500 cd/m2)	450 cd/m2 Typical (upto 500 cd/m2)
	Contrast Ratio	5000:1	5000:1
	Backlight Type	DLED	DLED
	Viewing Angle	178° (V)/ 178° (H)	178° (V)/178° (H)
	Resolution	3840 (H) X 2160(V)	3840 (H) X 2160(N)
Audio Output Power	20Wx2. 20W sub woofer (optional)	20Wx2. 20W sub woofer (optional)	
Touch	Touch technology	Infrared Multi Touch Technology	
	Touch Points	20 points (Android); 40 points (Windows)	
	Writing surface material	4mm AG glass, zero bonding technology	
	Touch Screen Sensor Mode	Finger, writing pen, hand with gloves or other non transparent touch sensitive medium	
	Touch Resolution	32768X32768	
	ResponseTime	First Point <2 ms, Continuation <8 ms	
	Min Recognition Dimension	2 mm	
Touch Accuracy	± 1 mm		
Android Specs	Android frequency	8 core ARM Cortex-A55	
	System Version	Android 14	
	Memory	4GB or 8GB	
	FLASH	32GB or 64 GB or 128GB	
	WIFI	2.4G+5G	
Bluetooth	5		
Back port	Input	HDMI IN	2
		HDMI OUT	1
		USB 2.0	2
		Touch USB	1
		RJ45	1
	OUT	RS232	1
		Coaxial	1
		Line Out	1
		Mic In	1
TF card	1		
Front port and function	HDMI IN	1	
	USB 3.0	2	
	TYPE-C	1	
	TP USB	1	
Front button	Power Button On/Off	1	
	Screen Capture	1	
	Screen Recording	1	
	Eyeshield	1	
	Voice+	1	
	Voice-	1	
Touch lock	1		
In-built Camera & MIC (Optional)		Built-in camera (48MP) & Built-in 8 Array microphone (optional)	
Accessories		Magnetic whiteboard Pen. Wall-Mount Bracket. Power Cord. Remote Control. Wifi antenna, HDMI Cable (optional), USB Touch Cable (optional)	
Others	Power consumption	≤ 175 W	≤ 220 W
	Standby consumption	≤ 0.5 W	
	Lifetime (Typical)	60,000 hours	60,000 hours
	Dimension	1482.8×891.9 ×81.2mm (L*H*D)	1705×1017×81.4mm (L*H*D)
	VESA hole site	500*400mm	600*400mm
	Net Weight	≤33Kg	≤ 48Kg
	Gross Weight	≤42Kg	≤ 59Kg
	package size	1610*190*1025mm(L*W*H)	1830*190*1150mm(L*W*H)
Interactive Software	Solitaire Digital Canvas Pro AI-powered interactive whiteboard software built for smart classrooms and meeting room collaboration - offers handwriting and shape recognition, equation tools, rich educational content, 2D/3D simulations, built-in AI assistants, real-time collaboration - With cloud and local storage, Google and Microsoft integration, multilingual support, and a clean drag-and-drop interface for content creation, delivers a fast, seamless, all-in-one digital learning & collaboration experience.		
Product Certificates	ISO9001, ISO14001, ISO27001, ISO45001, ISO50001, BIS, CE, CB (TUV) for 55" to 75" only, FCC, RoHS, EMC, NABL Test Report, E-Waste Certificate, GMP & MII Certificate		
OPS Computer	BIS Certified Customized OPS computer with options of Core i3/ i5/ i7 CPU, customized SSD, HDD, RAM & OS available with Feature-rich DIGITAL CANVAS IWB suite (Perpetual License)		

Disclaimer: Due to product configuration and manufacturing process, actual body size/body weight may vary, please refer to the actual product. The product images in this specification are for illustrative purposes only, may be adjusted and revised in order to match the actual product performance and specifications. In the event that such changes and adjustments are necessary, no special notice will be given. The actual product effect (including but not limited to appearance, color and size) may vary slightly. Please refer to the actual product. In order to provide accurate specifications as far as possible, the text expressions and pictures in this specification may be adjusted and revised in real-time.

Contact us:

SUPERTRON ELECTRONICS PRIVATE LIMITED

2, Cooper Lane, Mission Row Extension, Kolkata 700001

Phone No.: +91-33-40371000, +91-120-4291882

WhatsApp: +91-9818778982, Toll FREE No. 1800-571-6767

Email: Solitaire.Products@supertronindia.com

Website: www.supertronindia.com, www.solitairetech.in



Empowering Collaboration, Amplifying Impact