

## Solitaire DJA-Series Interactive Flat Panel for Education & Business



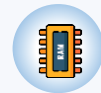
### Solitaire Interactive Flat Panel Where Vision Meets Innovation



Android



Multi touch  
points



8GB  
RAM



128GB  
Storage



Durability



Easy sharing &  
connectivity



Touch accuracy



Free cloud content  
access

### Key features:

- 4K UHD (3840 × 2160) @ 60Hz
- 4mm Toughened Glass
- Advanced IR technology
- Multi-Touch touch points
- Brightness: upto 500 cd / m<sup>2</sup>
- Contrast Ratio: upto 5000:1
- True Zero Bonding Technology
- BYOD enabled Wireless Casting
- Upto 60,000 hrs panel life
- +/-1 mm touch accuracy
- Android 14
- 8GB RAM, 128GB ROM
- Octa-Core ARM Cortex-A55
- 48 MP Built-in camera & 8 Array Mic (Optional)
- 20Wx2, 20W sub woofer (optional)
- Content Sharing using QR Code
- Advanced Interactive Software & DMS
- Customised OPS options. loaded with Digital Canvas IWB Software Suite
- FREE Wall Mount Kit, Floor Mount (Optional)

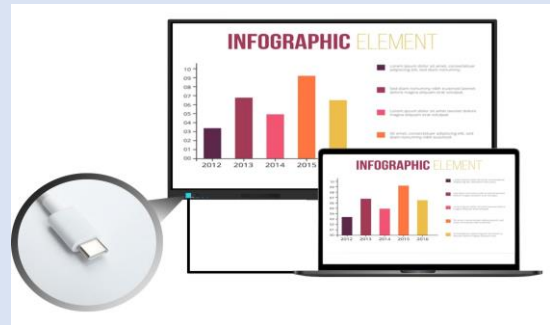
## A Complete Range of Interactive Displays



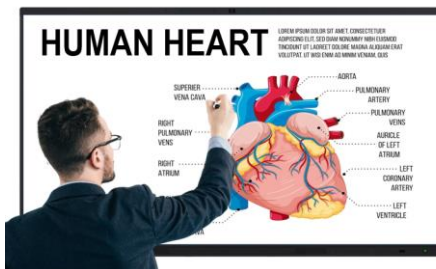
Solitaire Interactive Flat Panel aids teaching and learning. We provide reliable, high quality yet affordable Interactive Flat Panel Display (IFPD) systems with precise interactive experience, which are ideal for use in classrooms, training rooms, learning centres, and meeting rooms. We offer interactive tools to help teachers engage and inspire their students/learners.

## Connecting Mobile Devices

Solitaire Interactive Flat Panel software develops a Wi-Fi-based system for enabling mobile terminal and IFP interaction. You can use the system to link the IFP to a mobile terminal, take a photo and exhibit it on the IFP, control the IFP from the mobile terminal, post comments, present courseware, and send files.



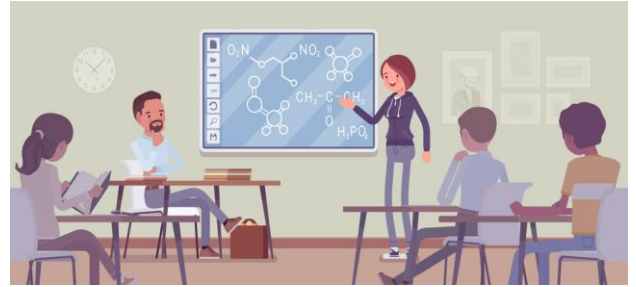
## Super Accurate Touch Experience:



Solitaire Interactive Flat Panels are powered by **Zero Bonding Technology**, supports up to 20 or 40 simultaneous multi-touch points. At every channel, you can write, annotate, and take screenshots. creating a precise and fluid writing experience. It also supports Multi-touch gesture control, annotation with multiple pens and colors, gestures to erase, zoom in/out, drag and many more

## Engage Students Like Never Before :

When students learn or are taught using Solitaire IFPD, our products ensure that the amount of attention, curiosity, enthusiasm, optimism, and passion they show extends to their motivation to learn and succeed in their education. Simple Design, 4K Resolution, Intuitive Interactive software, Full K12 content support (Optional), Teachers can improve learning outcomes using responsive touch, rich yet simple to use interactive software.



## Multiply your meeting room productivity

Start Meetings Instantly - More Engaging Presentations - Efficient Information Flow - Increased Collaboration In Meetings - Connect Your Personal Devices - An incredible combination of Touchscreen interactivity and Visual Collaboration.



## Stunning Display Quality

Solitaire Interactive panels produces Amazing Visual experience with bright, sharp image & video quality with Ultra HD 4K display resolution & super high contrast. Crystal clear display, incredible details, and beautiful pictures combine to provide a true visual feast.





## Powerful And Crisp Sound

Solitaire Interactive Panel uses a unique cavity acoustic structure, the sound is powerful, rich, wide, and sensitive, allowing all participants to experience amazing clarity as well as loud audio output.

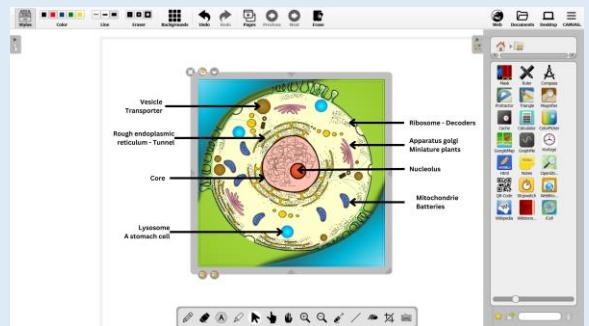


## Proudly Manufactured in India

Getting Inspired by the aim of GOI, team Solitaire have started manufacturing of PROINTEK Interactive panels in India (SKD/CKD production) with the goal of exporting them worldwide.

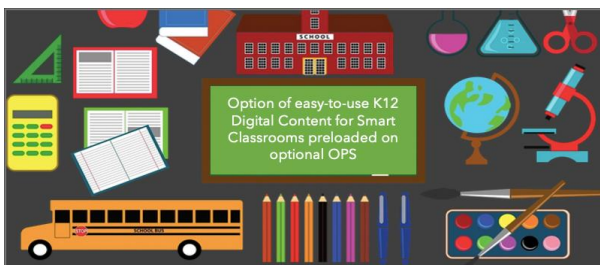


**Digital Canvas** is an advanced interactive whiteboard software suite for education and corporate training. This software supports whiteboard functions such as writing, erasing, annotating, drawing, and gesture support on IVB/IFP. Furthermore, the flat panel's interactive multimedia functions, such as subject-specific tools and multimedia playback, enable enhanced interactive teaching and demonstration experiences.



## Full K12 Content (optional)

Solitaire Education series Interactive Flat Panels come bundled with Interactive, offline and easy to use K12 Digital Content for Smart Classrooms. The content is in sync with CBSE / ICSE / IB / State Board and supports India Regional Languages as well.



# Specification Sheet:

## Solitaire DJA Series



Model		SLTR 55i	SLTR 65i	SLTR 75i	SLTR 86i	SLTR 98i
Display Parameter	Diagonal Size	55inch	65inch	75inch	86inch	98inch
	Effective Display Area	1209.6(H)*680.4(V)	1428.48(H)*803.52(V)	1650.24(H)*928.26(V)	1895(H)*1066(V)	2158.85(H)*1214.35(V)
	Resolution & Aspect Ratio	4K UHD, 16:9	4K UHD, 16:9	4K UHD, 16:9	4K UHD, 16:9	4K UHD, 16:9
	Brightness	450 cd/m2 Typical (upto 500 cd/m2)	450 cd/m2 Typical (upto 500 cd/m2)	450 cd/m2 Typical (upto 500 cd/m2)	450 cd/m2 Typical (upto 500 cd/m2)	450 cd/m2 Typical (upto 500 cd/m2)
	Contrast Ratio	5000:1	5000:1	5000:1	5000:1	5000:1
	Backlight Type	DLED	DLED	DLED	DLED	DLED
	Viewing Angle	178°(V)/178°(H)	178°(V)/178°(H)	178°(V)/178°(H)	178°(V)/178°(H)	178°(V)/178°(H)
	Resolution	3840 (H) X 2160(V)	3840 (H) X 2160(V)	3840 (H) X 2160(V)	3840(H) X 2160(V)	3840 (H) X 2160(V)
Audio Output Power	20Wx2, 20W sub woofer (optional)	20Wx2, 20W sub woofer (optional)	20Wx2, 20W sub woofer (optional)	20Wx2, 20W sub woofer (optional)	20Wx2, 20W sub woofer (optional)	
Touch	Touch technology	Infrared Multi Touch Technology				
	Touch Points	20 points touch on Android				
	Drive	HID drive free				
	Writing surface material	4mm AG glass, zero bonding technology				
	Touch Screen Sensor Mode	Finger, writing pen, hand with gloves or other non transparent touch sensitive medium				
	Touch Resolution	32768X32768				
	Communication Port	USB 2.0				
	Response Time	First Point <2 ms, Continuation <8 ms				
	Min Recognition Dimension	2 mm				
	Touch Accuracy	±1mm				
Calibration	Calibration free					
Touch Times	More than 60 million times in the same position					
Touch Power supply Mode	USB 5.0V power supply					
Android Specs	Android Frequency	8 core ARM Cortex-A55				
	System Version	Android 14				
	Memory	DDR4 4G or 8G				
	FLASH	32GB or 64 GB or 128G				
	WIFI	2.4G+5G				
	Bluetooth	5.0 / 6.0				
Back port	Input	LAN IN				I
		MIC				I
		HDMI				I
		RS-232				I
		USB 2.0				2
	OUT	TF-card				I
		Earphone				I
		HDMI				I
		coaxial(RCA)				I
		TOUCH OUT				I
Front port and function	USB2.0 / USB 3.0				3	
	HDMI 2.0				I	
	USB TOUCH				I	
	Type-C				I	
Front button	Power Button On/Off				I	
	HOME				I	
	Menu				I	
	Input				I	
	Voice+				I	
	Voice-				I	
	Annotation				I	
	Reset				I	
In-built Camera & MIC (Optional)	Built-in camera (48MP) & Built-in 8 Array microphone (optional)					
Accessories	Magnetic whiteboard Pen, Wall-Mount Bracket, Power Cord, Remote Control, WiFi antenna, HDMI Cable (optional), USB Touch Cable (optional)					
Others	Power consumption of the whole machine (excluding OPS)	≤190W	≤210W	≤325W	≤420W	≤500W
	Standby consumption	≤0.5W	≤0.5W	≤0.5W	≤0.5W	≤0.5W
	Lifetime (Typical)	60,000 hours	60,000 hours	60,000 hours	60,000 hours	60,000 hours
	Power supply	100-240V, 50/60Hz	100-240V, 50/60Hz	100-240V, 50/60Hz	100-240V, 50/60Hz	100-240V, 50/60Hz
	Dimension	1259.8*777.2*84.8 (mm)	1485.2*905.7*88.3 (mm)	1707.6*1030.9*88.3 (mm)	1953.56*1177.9*88.3 (mm)	2220*1324*105.7mm
	VESA hole site	4-MB hole site 400mm*400mm	4-MB hole site 500mm*400mm	4-MB hole site 600mm*400mm	4-MB hole site 800mm*400mm	4-MB hole site 900mm*600mm
	Net Weight	24.3KG	37KG	50.6KG	66KG	87.1kg
	Gross Weight	29KG	45.75KG	62KG	82KG	111kg
package size	1350*890*190mm	1600*1030*200mm	1855*1170*200mm	2095*1320*220mm	2358*1485*280mm	
Interactive Software	On Android	Embedded system contains feature rich & advanced Interactive Whiteboard Software.				
	On Windows	Feature-rich DIGITAL CANVAS IWB suite (Perpetual License) provided for interactive usage with OPS or External PC / Laptop				
Certificates	Product Certifications	ISO9001, ISO14001, ISO27001, ISO45001, BIS, CE, CB (TUV) for 55" to 75" only, FCC, RoHS, NABL Test Report, e-waste Certificate, GMP & MII Certificate				
OPS Computer		BIS Certified Customized OPS computer with options of Core i3/ i5/ i7 CPU, customized SSD, HDD, RAM & OS available				

Disclaimer: Due to product configuration and manufacturing process, actual body size/body weight may vary, please refer to the actual product. The product images in this specification are for illustrative purposes only, may be adjusted and revised in order to match the actual product performance and specifications. In the event that such changes and adjustments are necessary no special notice will be given. The actual product effect (including but not limited to appearance, color and size) may vary slightly. Please refer to the actual product. In order to provide accurate specifications as far as possible, the text expressions and pictures in this specification may be adjusted and revised in real time. The product specification

### Contact us:

## SUPERTRON ELECTRONICS PRIVATE LIMITED

2, Cooper Lane, Mission Row Extension, Kolkata 700001

Phone No.: +91-33-40371000, +91-120-4291882

WhatsApp: +91-9818778982

Toll Free No: 18000-571-6767

Email: Solitaire.IFPD@supertronindia.com

Website: www.supertronindia.com, www.solitairetech.in

*solitaire*<sup>®</sup>  
Interactive Flat Panel Displays & Unified Communication Products