

## Solitaire R+ Series Interactive Flat Panel for Education & Business



### Solitaire Interactive Flat Panel

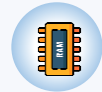
Empowering Collaboration, Amplifying Impact



Android



Multi touch points



4GB/8GB RAM



32/64/128GB Storage



Durability



Easy sharing & connectivity



Touch accuracy



Free cloud content access

### Key features:

- 4K UHD (3840 × 2160) @ 60Hz
- Antiglare Toughened Glass
- Advanced IR technology
- Multi-Touch touch points
- Brightness: upto 450cd / m2
- Contrast Ratio: upto 5000:1
- True Zero Bonding Technology
- BYOD enabled Wireless Casting
- Upto 60,000 hrs panel life
- +/-1 mm touch accuracy
- Android 13 Platform
- 4GB/8GB RAM, 32/64/128 GB ROM
- Quad-Core ARM Cortex-A55
- Built-in camera & 8 Array Mic (optional)
- Powerful Speakers
- Content Sharing using QR Code
- Advanced Interactive Software
- Customised OPS options. loaded with Digital Canvas IWB Software Suite
- FREE Wall Mount Kit, Floor Mount (Optional)

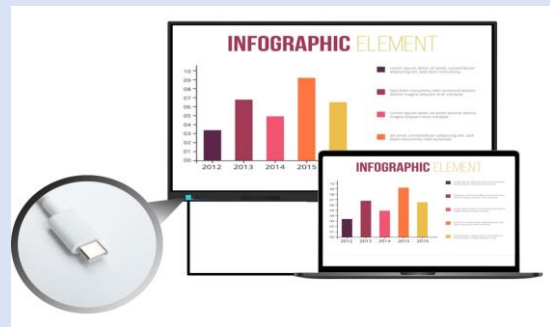
## A Complete Range of Interactive Displays



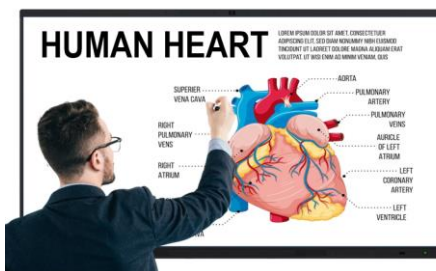
Solitaire Interactive Flat Panel aids teaching and learning. We provide reliable, high quality yet affordable Interactive Flat Panel Display (IFPD) systems with precise interactive experience, which are ideal for use in classrooms, training rooms, learning centres, and meeting rooms. We offer interactive tools to help teachers engage and inspire their students/learners.

## Connecting Mobile Devices

Solitaire Interactive Flat Panel software develops a Wi-Fi-based system for enabling mobile terminal and IFP interaction. You can use the system to link the IFP to a mobile terminal, take a photo and exhibit it on the IFP, control the IFP from the mobile terminal, post comments, present courseware, and send files.



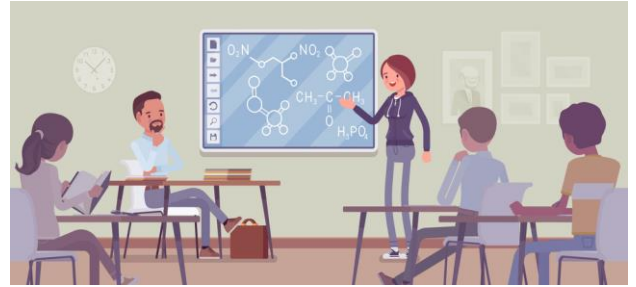
## Super Accurate Touch Experience:



Solitaire Interactive Flat Panels are powered by **Zero Bonding Technology**, supports up to 20 or 40 simultaneous multi-touch points. At every channel, you can write, annotate, and take screenshots. creating a precise and fluid writing experience. It also supports Multi-touch gesture control, annotation with multiple pens and colors, gestures to erase, zoom in/out, drag and many more

## Engage Students Like Never Before :

When students learn or are taught using Solitaire IFPD, our products ensure that the amount of attention, curiosity, enthusiasm, optimism, and passion they show extends to their motivation to learn and succeed in their education. Simple Design, 4K Resolution, Intuitive Interactive software, Full K12 content support (Optional), Teachers can improve learning outcomes using responsive touch, rich yet simple to use interactive software.



## Multiply your meeting room productivity

Start Meetings Instantly - More Engaging Presentations - Efficient Information Flow - Increased Collaboration In Meetings - Connect Your Personal Devices - An incredible combination of Touchscreen interactivity and Visual Collaboration.



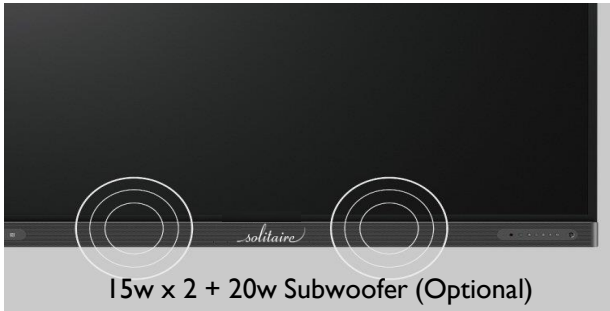
## Stunning Display Quality

Solitaire Interactive panels produces Amazing Visual experience with bright, sharp image & video quality with Ultra HD 4K display resolution & super high contrast. Crystal clear display, incredible details, and beautiful pictures combine to provide a true visual feast.



## Powerful And Crisp Sound

Solitaire Interactive Panel uses a unique cavity acoustic structure, the sound is powerful, rich, wide, and sensitive, allowing all participants to experience amazing clarity as well as loud audio output.

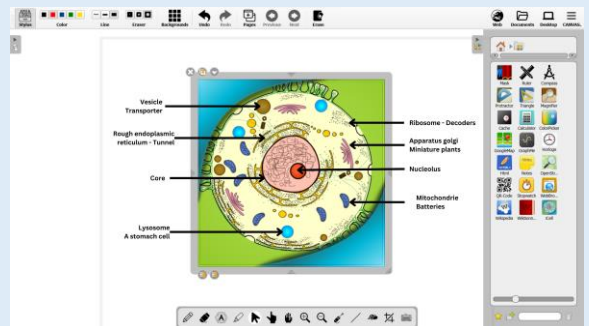


## Proudly Manufactured in India

Getting Inspired by the aim of GOI, team Solitaire have started manufacturing of PROINTEK Interactive panels in India (SKD/CKD production) with the goal of exporting them worldwide.

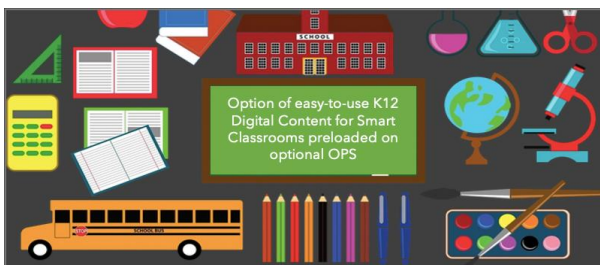


**Digital Canvas** is an advanced interactive whiteboard software suite for education and corporate training. This software supports whiteboard functions such as writing, erasing, annotating, drawing, and gesture support on IVB/IFP. Furthermore, the flat panel's interactive multimedia functions, such as subject-specific tools and multimedia playback, enable enhanced interactive teaching and demonstration experiences.



## Full K12 Content (optional)

Solitaire Education series Interactive Flat Panels come bundled with Interactive, offline and easy to use K12 Digital Content for Smart Classrooms. The content is in sync with CBSE / ICSE / IB / State Board and supports India Regional Languages as well.



# SLTR 65i Interactive Flat Panel Display

Display specification	
Diagonal display size	65"
Active area (mm)	1428.48 (H) * 803.52 (V)
Pixel Pitch	0.372mm x 0.372mm
Bezel color	Aluminum frame Black color
Back Light	Direct type LED (D-LED)
Resolution	3840*2160 /60hz
Aspect Ratio	16:09
Contrast Ratio	5000:1
Colors	1.07 billion colors
Brightness	400 / 450 cd/m2
Viewing angle	178°
Glass hardness	Mohs 7 level
Screen surface	Anti-Glare glass
Lifetime	>60,000 hours
Panel Interactivity	
Touch technology	IR touch
Multi touch	20 points (20 points in Android & 40 points in Windows)
Anti-light	Anti-glare tempered Glass 3.0mm / 3.2mm / 4.0 mm
Minimum object size	3mm
Accuracy	1 mm (over 90% Area)
Response Time	First Point < 2ms, Continuity <8 ms
System support	Windows 7/8/10/11; Android; Mac; Linux; Chrome OS
Front side Connectivity	
Front I/O Ports	TOUCH USB x 1, HDMI 2.0 INPUT x 1, USB x 3
Front keys	Power on/off; Signal source; Setting; ECO; Menu; Volume down; Volume up
Camera (Optional)	Built-in Camera 13MP / 48 MP (Optional)
MIC (Optional)	8 Array MIC (Optional)
Audio	
Audio Amplifier	In-Built
Sound channel	2
Output Power	10W x 2 (Option) / 20W x 2 (standard) / 15W or 20W x 2 with 20W sub woofer (Optional)
Rear/Bottom side Connectivity	
TOUCH USB B-type	
RJ45 IN	
AV IN	
AV OUT	
EARPHONE OUTPUT	
SPDIF OUT	
HDMI 2.0 INPUT	2
RS232	
USB 3.0	
USB 2.0	
Blue tooth	
WI-FI	Wireless IEEE802.11 A/B/G/N dual band 2.4GHz/5.0GHz
Windows OPS Slot	OPS & OPS-C Intel standard
Operating system	
Android Version	Android 13.0
CHIP	Amlogic T982
CPU	A55*4 @1.9GHz
RAM	4GB / 8GB DDR4
ROM	32GB / 64GB / 128GB
GPU	G52 MP2
Physical specifications	
Net Weight (kg±2)	38
Gross Weight (kg±2)	44
Screen Dimensions (mm)	1485 (L) *84.7 (W) *887.6 (H) mm
Dimensions Package	1580 (L) *205 (W) *1000 (H) mm
VESA	400*500mm, 4*M8
Electrical	
Input Voltage	100-240V AC
Switch on or off	Yes
Power Consumption (Standby)	<0.5W
Power Consumption	Maximun< 290W (With OPS together <550W) Eco<75W
Accessories	
Accessories	WIFI antenna; Writing pen * 2pcs, Remote control *1pcs, 3m power cord *1pcs, 3m HDMI cable *1pcs, 5m USB A to USB B touch cable *1pcs; wall mount kit
Software Features	
Wireless casting	Yes
Interactive Software	On Android embedded system contains feature rich & advanced Interactive Whiteboard Software. On Windows Feature-rich DIGITAL CANVAS IWB suite (Optional) is available for interactive usage with OPS or External PC / Laptop
Product Certification	ISO 9001, ISO 14001, ISO 27001, ISO 45001, BIS, CE, CB (TUV), FCC, RoHS, NABL Test Report, e-waste Certificate, MII Certificate & GMP
OPS (Optional)	Customised OPS computer with options of Core i3/ i5/ i7 CPU, customised SSD, HDD, RAM & OS

*Disclaimer: Due to product configuration and manufacturing process, actual body size/body weight may vary, please refer to the actual product. The product images in this specification are for illustrative purposes only, may be adjusted and revised in order to match the actual product performance and specifications. In the event that such changes and adjustments are necessary, no special notice will be given. The actual product effect (including but not limited to appearance, color and size) may vary slightly. Please refer to the actual product. In order to provide accurate specifications as far as possible, the text expressions and pictures in this specification may be adjusted and revised in real time. The product specification*

## Contact us:

### SUPERTRON ELECTRONICS PRIVATE LIMITED

2, Cooper Lane, Mission Row Extension, Kolkata 700001

Phone No.: +91-33-40371000, +91-120-3584790, +91-120-3645968, +91-120-4166298

WhatsApp: +91-9818778982, Email: Solitaire.IFPD@supertronindia.com

Website: www.supertronindia.com, www.solitairetech.in

 solitaire®  
Interactive Flat Panel Displays & Unified Communication Products