

Solitaire Interactive Flat Panel SLTR 110i for Education & Business

INTERNAL STRUCTURE OF THE BRAIN

Labels in the diagram: Frontal lobe, Limbic lobe, Thalamus, Parietal lobe, Corpus callosum, Pineal gland, Occipital lobe, Optic chiasma, Mammillary body, Pons, Medulla oblongata, Spinal cord, Cerebellum.

Below the panel, six icons represent key features: Touch accuracy, Free cloud content access, Android, Multi touch points, 4GB / 8GB RAM, and 32/64/128 GB Storage.

Key features:

- 4K UHD (3840 × 2160)
- 4mm Toughened Glass
- Advanced IR technology
- Multi-Touch touch points
- Brightness: 450cd /m2
- Contrast Ratio: upto 5000:1
- True Zero Bonding Technology
- BYOD enabled Wireless Casting
- Upto 60,000 hrs panel life
- +/-1 mm touch accuracy
- Android 11 (upgradable to 13)
- 4GB / 8GB RAM, 32GB/64GB/ 128GB ROM
- Quad-Core ARM Cortex-A55
- 13MP / 48 MP Built-in camera & 8 Array Mic
- Speakers (15W*2+Optional 20W Sub-woofer)
- Content Sharing using QR Code
- Advanced Interactive Software on Android
- Customised OPS (Optional) loaded with Digital Canvas IWB Software Suite
- FREE Wall Mount Kit, Floor Mount (Optional)

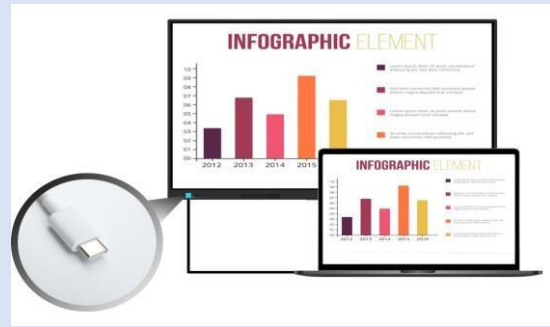
A Complete Range of Interactive Displays



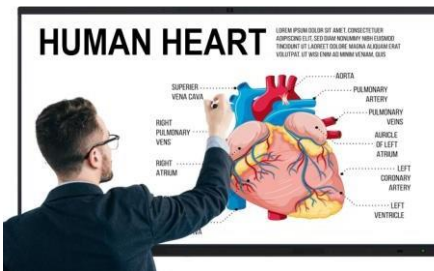
Solitaire Interactive Flat Panel aids teaching and learning. We provide reliable, high quality yet affordable Interactive Flat Panel Display (IFPD) systems with precise interactive experience, which are ideal for use in classrooms, training rooms, learning centres, and meeting rooms. We offer interactive tools to help teachers engage and inspire their students/learners.

Connecting Mobile Devices

Solitaire Interactive Flat Panel software develops a Wi-Fi-based system for enabling mobile terminal and IFP interaction. You can use the system to link the IFP to a mobile terminal, take a photo and exhibit it on the IFP, control the IFP from the mobile terminal, post comments, present courseware, and send files.



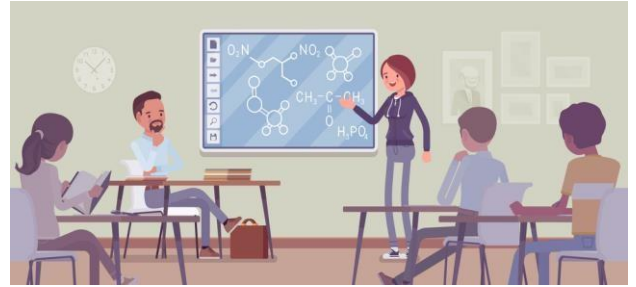
Super Accurate Touch Experience:



Solitaire Interactive Flat Panels are powered by **Zero Bonding Technology**, supports up to 20 or 40 simultaneous multi-touch points. At every channel, you can write, annotate, and take screenshots. creating a precise and fluid writing experience. It also supports Multi-touch gesture control, annotation with multiple pens and colors, gestures to erase, zoom in/out, drag and many more

Engage Students Like Never Before :

When students learn or are taught using Solitaire IFPD, our products ensure that the amount of attention, curiosity, enthusiasm, optimism, and passion they show extends to their motivation to learn and succeed in their education. Simple Design, 4K Resolution, Intuitive Interactive software , Full K12 content support (Optional), Teachers can improve learning outcomes using responsive touch, rich yet simple to use interactive software.



Multiply your meeting room productivity

Start Meetings Instantly - More Engaging Presentations - Efficient Information Flow - Increased Collaboration In Meetings - Connect Your Personal Devices - An incredible combination of Touchscreen interactivity and Visual Collaboration.



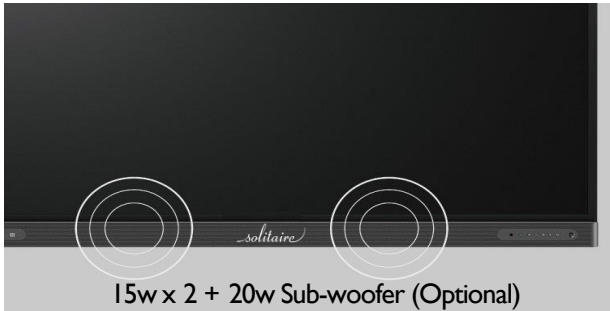
Stunning Display Quality

Solitaire Interactive panels produces Amazing Visual experience with bright, sharp image & video quality with Ultra HD 4K display resolution & super high contrast. Crystal clear display, incredible details, and beautiful pictures combine to provide a true visual feast.



Powerful And Crisp Sound

Solitaire Interactive Panel uses a unique cavity acoustic structure, the sound is powerful, rich, wide, and sensitive, allowing all participants to experience amazing clarity as well as loud audio output.

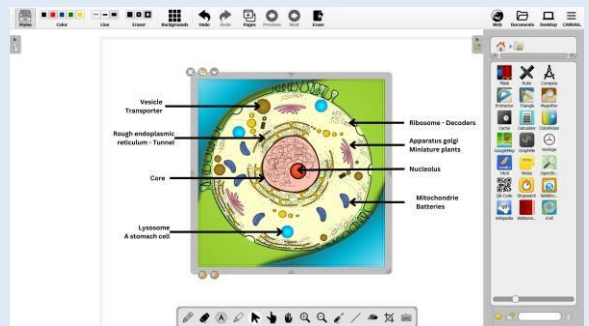


Proudly Manufactured in India

Getting Inspired by the aim of GOI, team Solitaire have started manufacturing of Interactive panels in India (SKD/CKD production) with the goal of exporting them worldwide.

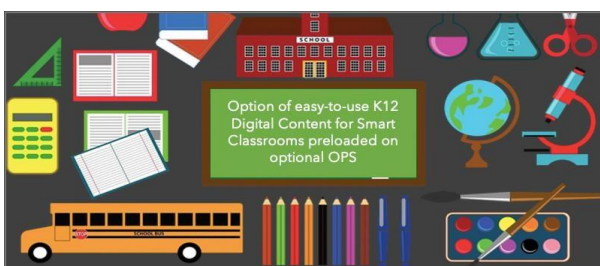


Digital Canvas is an advanced interactive whiteboard software suite for education and corporate training. This software supports whiteboard functions such as writing, erasing, annotating, drawing, and gesture support on IWB/IFP. Furthermore, the flat panel's interactive multimedia functions, such as subject-specific tools and multimedia playback, enable enhanced interactive teaching and demonstration experiences.



Full K12 Content (optional)

Solitaire Education series Interactive Flat Panels come bundled with Interactive, offline and easy to use K12 Digital Content for Smart Classrooms. The content is in sync with CBSE / ICSE / IB / State Board and supports India Regional Languages as well.



SOLITAIRE SLTR 110i Interactive Flat Panel Display		
Display specification		
Diagonal display size		110(inch)
Bezel color	Aluminum frame(Black color)	√
Panel type	Ultra HD Direct type LED	√
Active area (mm)		2436.48 (H) × 1370.52 (V) mm
Resolution	3840*2160 /60hz	√
Hardness Glass	Mohs-7 level	√
Glass Panel	Anti-Glare glass with zero bonding	√
Aspect Ratio	16:9	√
Contrast Ratio	1200:1 (typical)	√
Dynamic Contrast Ratio	5000:1	√
Brightness	450 cd/m2	√
Color depth	1.07 billion colors	√
Viewing angle	178°	√
Lifespan	60,000 hours	√
Touch Type		
Touch Technology	IR touch	√
Multi Touch	Max 40 points(VWindows)	√
Multi Writing	Max 20 points(VWindows)	√
Touch Precision	1 mm (over 90% Area)	√
Anti-light	Yes	√
Minimum object size	2mm	√
Touch Response Time	First Point <2 ms, Continuation <8 ms	√
Supporting OS	Windows; Android; Mac; Linux; Chrome OS	√
Sound		
Speakers	2.0 (2.1 optional)	√
Front Speakers	15W*2 / (20W*2 optional)	√
Subwoofer	20W*1 optional	√
Microphone (optional)		
Type	wide-area microphones	√
Number of Microphones	8	√
Auto switch (VWindows/Central)	Yes	√
Disconnectable	Yes	√
Camera (optional)		
Maximum resolution and frame rate	4208*3120 (30 fps)	√
FOV(field of view)	120 degrees	√
Front Side Connections		
Front Ports	USB3.0 * 3 lines (Public for both Android & PC) ; Touch out USB B type * 1 line; HDMI in 2.0 * 1 line;	
Front Keys	Power on/off; Signal source; Return; Main page; Menu; Volume down; Volume up	
Bottom Side Connections		
USB-B (touch)	1	√
LAN-Port IN	1 (RJ45, 100 Mbit/s)	√
YPbPr IN	1	√
AV IN	1	√
AV OUT	1	√
HDMI OUT (option)	1	√
AUDIO IN (option)	1	√
VGA IN(option)	1	√
Earphone/Line Out	1	√
SPDIF OUT	1	√
HDMI IN	2	√
RS232	1 x DB9 Male	√
Android USB3.0	1	√
Android USB2.0	1	√
Windows OPS Slot	80-pins OPS slot	√
WiFi Standard	Wi-Fi 5(2.4G+5G)	√
Bluetooth version	5.0	√
Processing units		
Android Version	Android 11.0 (upgradable to 13)	√
Chip	Amlogic T982	√
CPU	High-End (Quad-Core A55) 1.9GHz	√
GPU	High-End (G52 MP2)	√
Memory	4GB / 8GB DDR4	√
Storage	32GB / 64GB / 128GB	√
Compliant with	Windows; Mac; Linux; Chrome OS	√
Over-the-Air Updates (OTA)	YES	√
NFC Reader/Writer	optional	√
Motion Sensors	optional	√
Light Sensor	optional	√
Air Quality Monitoring	optional	√
Temperature Sensor	optional	√
General Information		
Power Supply	~ 100-240 V (50/60Hz)	√
Switch On / Off	Yes	√
Standby Energy Consumption	≤ 0.5 Watt	√
Power Consumption		Maximum< 650W, Eco<75W
Net Weight	(KG ± 2)	130KG
Gross Weight	(KG ± 2)	160KG
Screen Dimensions	(WxDxH)	2499*1512*98mm
Dimensions Package	(WxDxH)	2670*1880*330mm
VESA Standard	(mm)	1000×400mm M8×25mm
Warranty	3 years	√
Environmental conditions		
Operating Temperature	0°C - 38°C/32 - 100 °F	√
Storage Temperature	-20°C - 60°C/-4 - 140 °F	√
Storage Humidity	10 % - 90 %	√
Usage Humidity	10 % - 90 %	√
Accessories		
Accessories	WiFi antenna*4pcs, Stylus * 2pcs, Remote control *1pcs, 1.5m power cord *1pcs, 1.5m HDMI cable *1pcs, 1.5m USB touch cable *1 pcs; wall mount kit	
For further details, contact SOLITAIRE.IFPD@SUPERTRONINDIA.COM		

Disclaimer: Due to product configuration and manufacturing process, actual body size/body weight may vary, please refer to the actual product. The product images in this specification are for illustrative purposes only, may be adjusted and revised in order to match the actual product performance and specifications. In the event that such changes and adjustments are necessary, no special notice will be given. The actual product effect (including but not limited to appearance, color and size) may vary slightly. Please refer to the actual product. In order to provide accurate specifications as far as possible, the text expressions and pictures in this specification may be adjusted and revised in red time. The product specification

solitaire®

Interactive Flat Panel Displays & UC Products

www.solitairetech.in

Contact us:

HQ: SUPERTRON ELECTRONICS PRIVATE LIMITED

2, Cooper Lane, Mission Row Extension, Kolkata 700001, WB, India

Manufacturing Unit: G3, Sector 63, Noida 201301, UP, India

Phone No.: +91-33-40371000, +91-120-3584790, +91-120-3645968,
+91-120-4166298, **WhatsApp:** +91-9818778982

Toll-Free No.: 1800-571-6767

Email: Solitaire.IFPD@supertronindia.com

Website: www.supertronindia.com