

Financing Energy Independence: Four Proven Models for Governments, NGOs & Development Partners

- ◆ 1. CAPITAL EXPENDITURE (CAPEX) – Full Ownership from Day One
Best For: Municipalities, utilities, national energy agencies, SMEs with capital access

How It Works:

- The client fully funds the solar + storage microgrid upfront. PPM ECO designs, installs, commissions, and provides training and O&M support. The system is owned outright from day one.

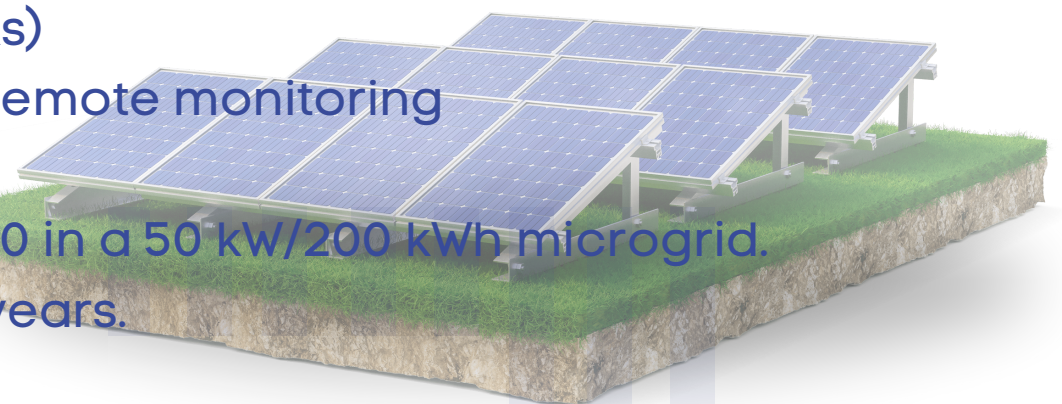
Key Benefits:

- Immediate ROI through diesel displacement (\$0.28–\$0.45/kWh → \$0.12–\$0.18/kWh)
- Long-term energy cost stability
- Full control over operations and revenue
- Eligible for tax incentives and depreciation

Implementation Steps:

- Site assessment (2 weeks)
- System design & quote (1–2 weeks)
- Contracting & payment
- Installation & commissioning (6–8 weeks)
- Handover with full documentation and remote monitoring

Example: A resort in Jamaica invests \$95,000 in a 50 kW/200 kWh microgrid. Saves \$22,000/year on diesel. Payback: <5 years.





PPM ECO GLOBAL

◆ 2. LEASE-TO-OWN – Low Upfront Cost, Build Equity Over Time

Best For: SMEs, cooperatives, rural clinics, schools, off-grid villages

How It Works:

- PPM ECO owns and operates the system. The customer pays fixed monthly lease payments over 5–7 years. At term end, full ownership transfers to the local entity.

Key Benefits:

- \$0–low upfront cost
- Payments structured to be less than current energy costs
- PPM handles maintenance, repairs, and performance guarantees
- Builds credit history for future financing

Funding Source: PPM ECO balance sheet + impact investor capital

Example: A women-led bakery in Havana leases a 10 kW system for \$320/month – saves \$480/month in diesel. After 6 years, owns the system and reinvests savings.

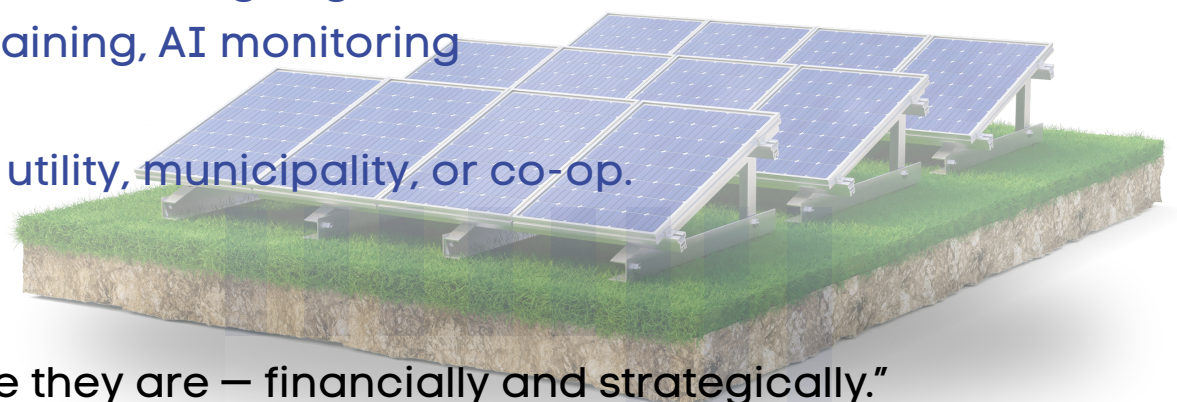
◆ 3. PUBLIC-PRIVATE PARTNERSHIP (PPP) – Shared Investment, Shared Outcomes

Best For: National electrification programs, municipal resilience zones, donor-backed initiatives

How It Works:

- Co-investment model between:
- Government: Land, permitting, policy support, partial funding
- Donor Agency: Grant or concessional financing (e.g., IDB, GCF)
- PPM ECO: Technology, installation, training, AI monitoring

Ownership transferred to a community utility, municipality, or co-op.



“We meet communities where they are – financially and strategically.”



PPM ECO GLOBAL

Key Benefits:

- Reduces fiscal burden on government
- Accelerates deployment at scale
- Ensures sustainability via local capacity building
- Aligns with national energy policies (e.g., Jamaica's 50% RE by 2030)

Implementation Timeline:

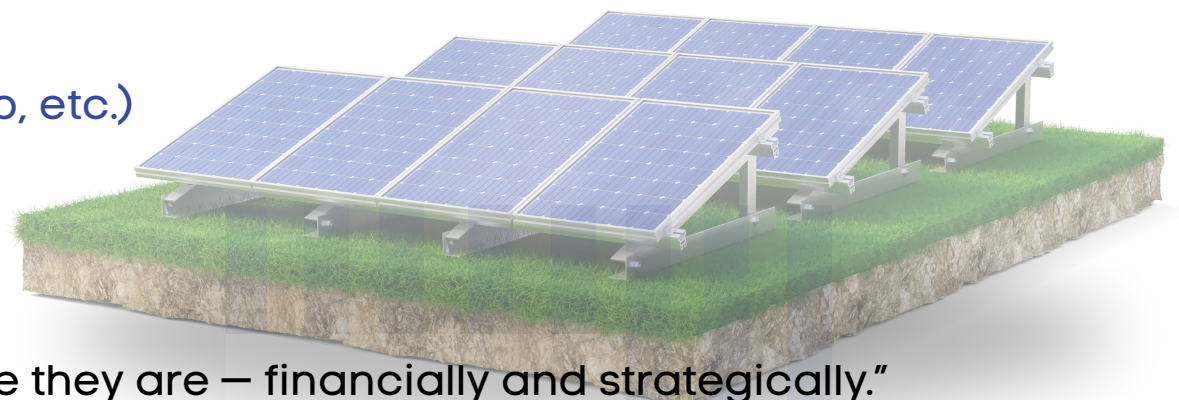
- Site Assessment: 2 weeks
- Feasibility & Proposal: 4 weeks
- Agreement Signing: 2–4 weeks
- Installation & Training: 6–8 weeks
- Handover & Support: Ongoing

Example: In Dominica, PPM ECO partnered with the Ministry of Energy and GIZ (\$1.8M grant) to deploy 10 village microgrids. Result: universal energy access in targeted zones within 18 months.

◆ 4. DONOR CO-FINANCING – Activate Climate Funds, We Implement
Best For: NGOs, multilateral agencies (IDB, CDB, UNDP, GIZ), foundations, disaster recovery programs

How It Works:

- PPM ECO acts as the technical implementer and fiduciary agent for international climate and development grants. We manage:
- Proposal development
- Procurement & logistics
- Installation & commissioning
- Local technician training
- Compliance reporting (GCF, IDB Lab, etc.)



“We meet communities where they are – financially and strategically.”



PPM ECO GLOBAL

Local partners contribute land, labor, or minimal equity.

Key Benefits:

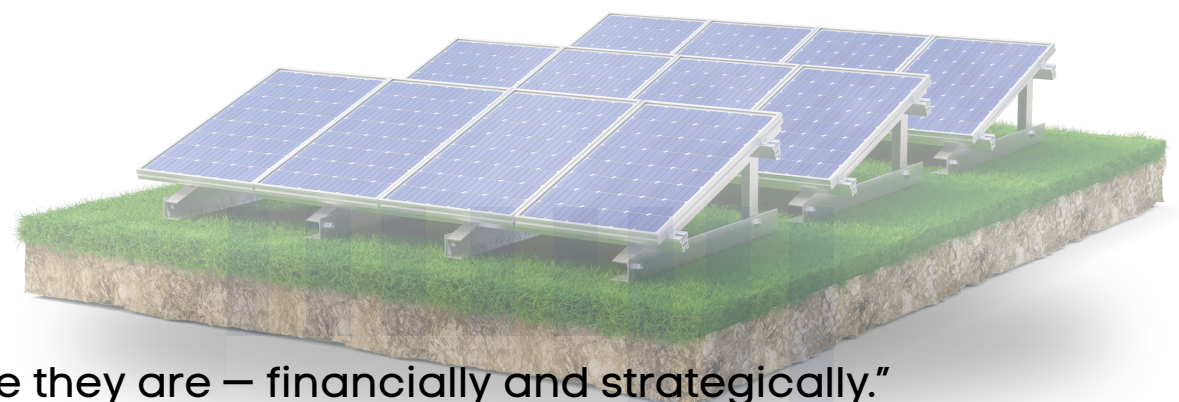
- Donors retain oversight while offloading technical complexity
- Fast deployment: 90 days from approval to power-on
- Built-in M&E via PPM AI Dashboard (real-time performance tracking)
- Direct alignment with SDGs: 7 (Energy), 13 (Climate), 5 (Gender), 8 (Jobs)

Eligible Funding Windows:

- Green Climate Fund (GCF)
- Inter-American Development Bank (IDB)
- Caribbean Development Bank (CDB)
- USAID, GIZ, UNDP, EU

Example: Through a \$2.5M IDB Lab grant, PPM ECO deployed solar microgrids to 15 rural health clinics across Haiti and Cuba. Each clinic receives free, reliable power. One staff member per site trained as a solar technician.

"We turn donor dollars into lasting light."



"We meet communities where they are – financially and strategically."

✓ Summary: PPM ECO’s Role Across Models

Model	Client Pays	Ownership Path	PPM ECO Role
CapEx	Full upfront	Immediate	Installer + Trainer + O&M Provider
Lease-to-Own	Monthly over 5–7 yrs	Transfers at end	Lessor + Operator + Trainer
PPP	Shared: Gov + Donor	Community or Utility	Technical Partner + Implementer
Donor Co-Financing	Grant-funded	Public/NGO Entity	Implementer + Fiduciary Agent

👉 **Next Steps: Let’s Co-Develop Resilience**

● **Pilot Projects Available Q1 and Q2 2027**

📅 **Estimated Timeline:**

- **Site Assessment: 2 weeks**
- **Proposal & Financing Plan: 4 weeks**
- **Installation & Training: 6–8 weeks**
- **Handover & Long-Term Support: Ongoing**

We provide full grant writing support, feasibility studies, and donor engagement services.

📞 **Contact:**

Teddy Saunders, Managing Director

✉️ teddy.saunders@ppmecocaribbean.com

📞 **+1 (868) 789-4560**

🌐 www.ppmeeco.com

🌞🇧🇧🇮🇲🇵🇲 **“Together, we’re not just powering islands. We’re re-empowering nations.”**

“We meet communities where they are – financially and strategically.”





PPM ECO GLOBAL

 **ESPAÑOL**

PPM ECO CARIBE

Financiando la Independencia Energética: Cuatro Modelos para Gobiernos, ONGs y Socios de Desarrollo

1. CAPITACIÓN (CAPEX) – Propiedad Total desde el Primer Día

Inversión inicial completa. El cliente posee el sistema inmediatamente. Ideal para municipios, empresas con capital, y agencias nacionales.

2. ARRENDAMIENTO CON OPCIÓN DE COMPRA – Bajo Costo Inicial, Propiedad Futura

Pago mensual durante 5–7 años. Al finalizar, la propiedad se transfiere al cliente. Ideal para PYMES, cooperativas y clínicas rurales.

3. ASOCIACIÓN PÚBLICO-PRIVADA (APP) – Inversión Compartida, Resultados Compartidos

Colaboración entre gobierno, donantes y PPM ECO. La propiedad se transfiere a una entidad comunitaria o municipal. Acelera el despliegue a gran escala.

4. FINANCIACIÓN POR DONANTES – Activamos Fondos Climáticos, Nosotros Ejecutamos


PPM ECO actúa como implementador técnico y agente fiduciario para fondos internacionales (GCF, BID, CDB, etc.). Garantizamos cumplimiento, formación local y monitoreo continuo.

 **Ejemplo: A través de una subvención del BID Lab, instalamos microrredes solares en 15 clínicas rurales en Haití y Cuba.**

 **Contacto:**

Teddy Saunders, Director General

 **teddy.saunders@ppmecocaribbean.com**

 **+1 (868) 789-4560**

 **www.ppmeco.com**

  **"Juntos, no solo estamos alimentando islas. Estamos reempoderando naciones."**

Atendemos a las comunidades donde se encuentran – financieramente y estratégicamente.



FRANÇAIS

PPM ECO ANTILLES

Financer l'Indépendance Énergétique : Quatre Modèles pour Gouvernements, ONG et Partenaires de Développement

1. INVESTISSEMENT EN CAPITAL (CAPEX) – Propriété Immédiate

Investissement initial complet. Le client devient propriétaire dès le départ. Idéal pour les municipalités, entreprises et agences énergétiques nationales.

2. LOCATION-ACQUISITION – Faible Coût Initial, Propriété Future

Paiements mensuels sur 5 à 7 ans. À l'échéance, propriété transférée au bénéficiaire. Parfait pour les PME, coopératives et cliniques rurales.

3. PARTENARIAT PUBLIC-PRIVÉ (PPP) – Investissement Partagé, Résultats Partagés

Collaboration entre gouvernement, bailleurs de fonds et PPM ECO. La propriété est transférée à une entité communautaire ou municipale. Permet un déploiement rapide et durable.

4. FINANCEMENT PAR DONATEURS – Nous Activons les Fonds, Nous Exécutons

PPM ECO agit comme maître d'œuvre technique et agent fiduciaire pour les financements internationaux (FVC, BAD, BDC, etc.). Nous assurons la mise en œuvre, la formation locale et le suivi rigoureux.

📌 Exemple : Grâce à un financement de 2,5 M\$ du LAB-IDB, nous avons déployé des microréseaux solaires dans 15 cliniques rurales en Haïti et à Cuba.

📞 Contact :

Teddy Saunders, Directeur Général

✉ teddy.saunders@ppmecocaribbean.com

☎ +1 (868) 789-4560

🌐 www.ppmeco.com

☀️🇧🇪🇵🇷🇯🇲 "Ensemble, nous ne faisons pas que fournir de l'énergie aux îles. Nous redonnons du pouvoir aux nations."

Nous rejoignons les communautés là où elles se trouvent – sur le plan financier et stratégique.

