



## IntelliTread™ Drive-Over System (DOS) and Tyrata.io Data Portal Summary

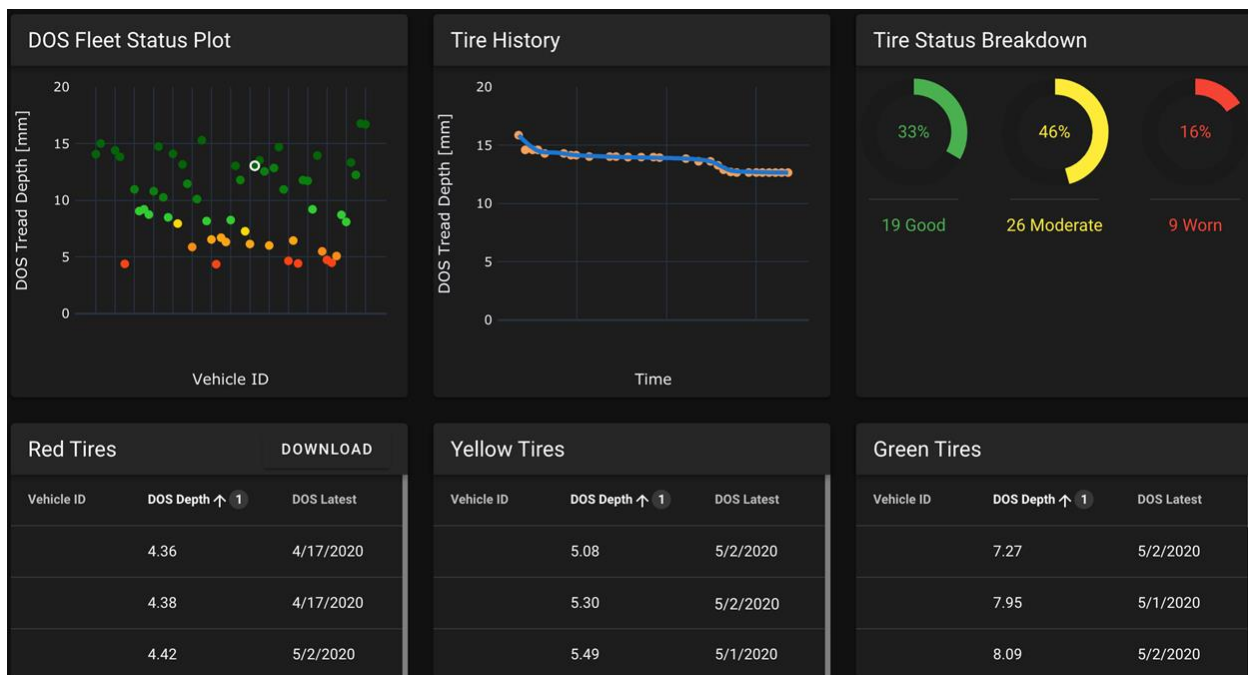
The DOS uses a robust, solid-state sensor system to measure tread depth each time a vehicle drives over the speedbump-like unit. Integrated RFID readers allow for specific tracking of vehicles and/or tires.

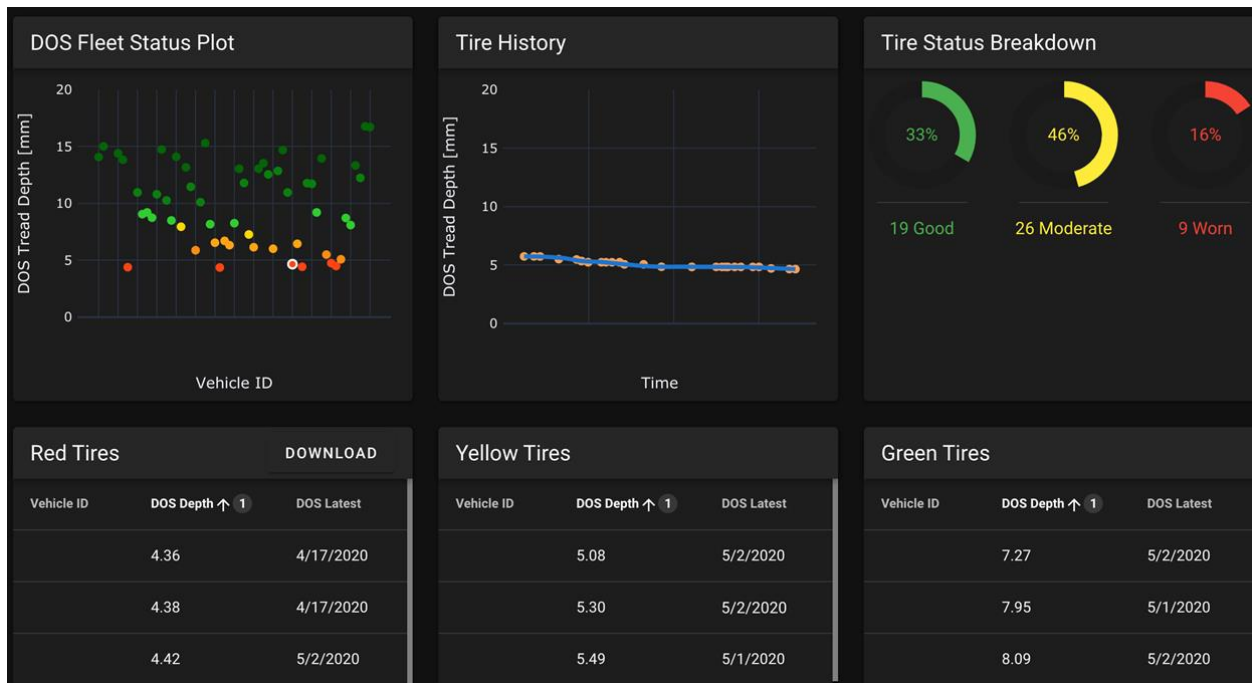
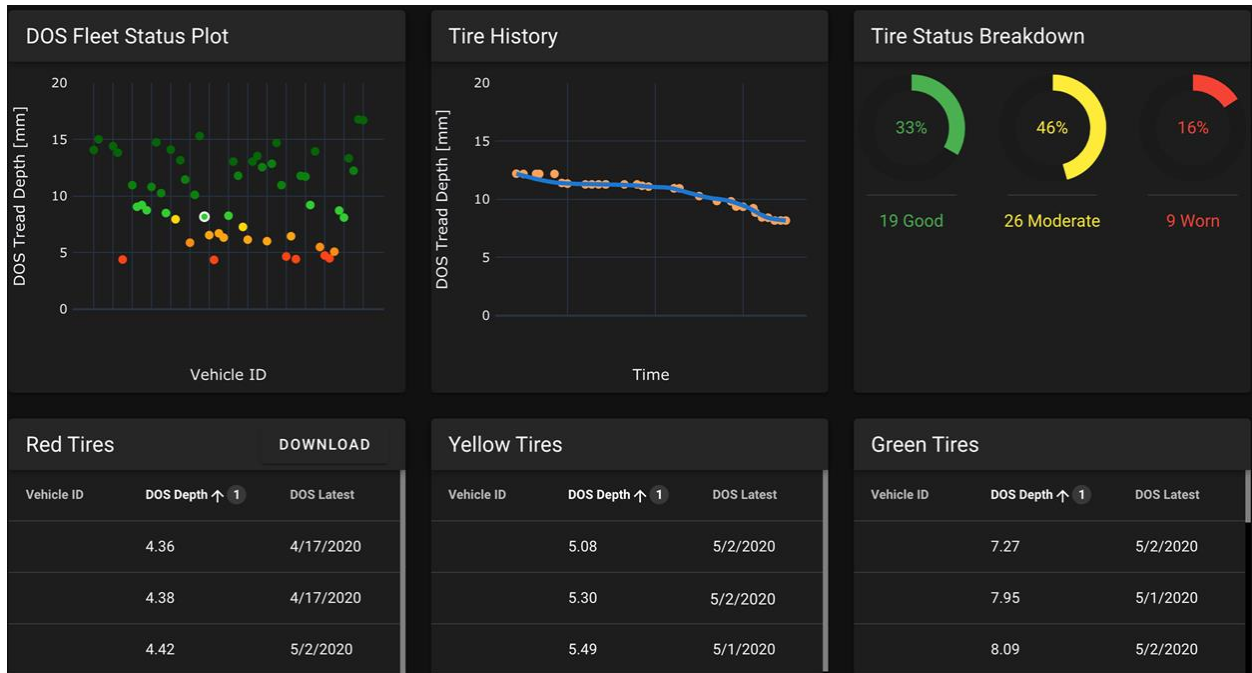
Routine monitoring enables statistical processing of DOS readings that improve accuracy and provide clear tread wear trends. The DOS Analytical Engine can provide anything from a simple daily or weekly report on current tires requiring maintenance to predictive analytics for improving management of vehicles/tires across fleet.

Tyrata has developed an easy-to-use, cloud-based data portal for monitoring tread wear of fleet tires. The data portal is user-friendly, simplifying routine queries and graphically displaying the status of the entire fleet in one simple screen. Details of tire tread over time can be displayed and, with enough data, remaining time to replacement can be estimated. The following are examples of three different tires from a fleet showing various wear states.

The Tyrata data portal can be populated with customized widgets to suit a customer's needs. For example, reports can be generated to highlight current and upcoming tire maintenance needs, historical trends for tire wear on specific vehicles can be provided, and detailed analytics can be performed for optimizing vehicle/tire usage in a fleet.

Three separate tires data portal examples:







Contact:

**Luka Lojk**

*VP Sales and Marketing, Tyrata Inc.*

*Luka.Lojk@Tyrata.com*

*+1.704.593.8418*